

4

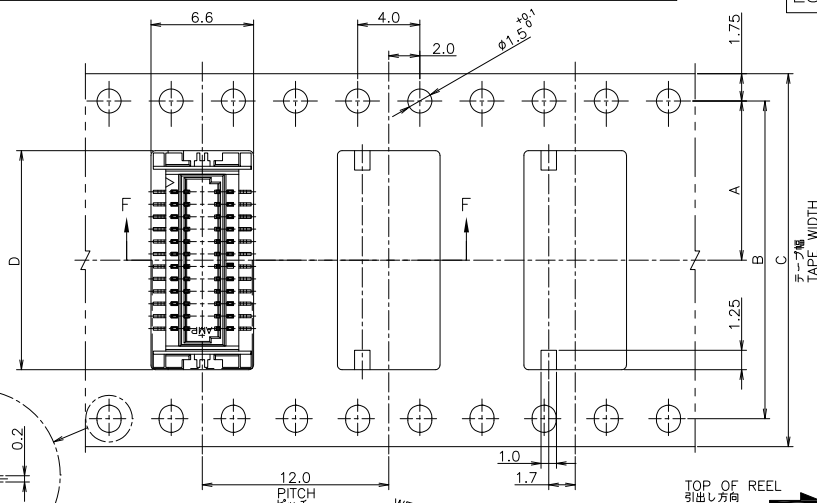
3

2

1

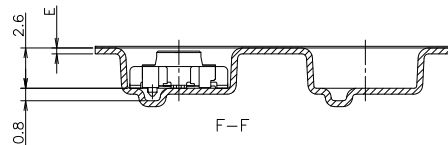
THIS DRAWING IS UNPUBLISHED. RELEASED FOR PUBLICATION FEB. 1994.  
 © COPYRIGHT 1994 BY - ALL RIGHTS RESERVED.

LOC	DIST	REVISIONS					
ES	L2	P	LTR	DESCRIPTION	DATE	DWN	APVD
				REVISED PER ECO-11-005694		27OCT2011	B.L

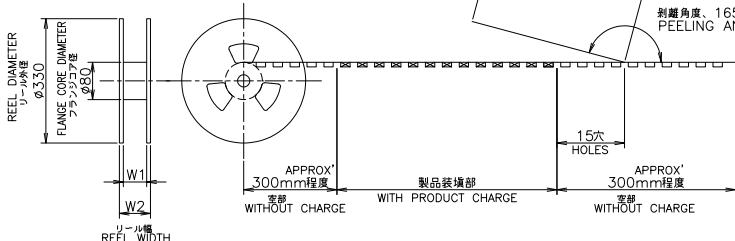


AS SHOWN 24POS.

△ 指示穴は40極品以上に適用。  
 △ THESE HOLES ARE APPLIED TO 40 POS OR MORE.



WEEDING THE COVER TAPE AROUND THE OUTER PERIPHERY  
 カバーテープ リーフ部 外周一部  
 剝離角度、165°~180°  
 PEELING ANGLE.



	BLACK	29.5	25.5	0.38	16.5	24	---	11.5	1500	30	3-179397-5
OBSOLETE	BEIGE	49.5	45.5	0.36	24.5	44	40.4	20.2	1500	50	5-179397-0
OBSOLETE		↑	↑	↑	20.5	32	28.4	14.2	↑	40	4-↑-0
		↑	↑	↑	16.5	↑	↑	↑	↑	30	3-↑-0
		↑	↑	↑	14.1	24	↑	11.5	↑	24	2-↑-4
		↑	↑	↑	10.9	↑	↑	↑	↑	16	1-↑-6
		↑	↑	↑	↑	↑	↑	↑	↑	14	1-↑-4
ベージュ	BEIGE	22.4	16.4	0.4	9.3	16	---	7.5	1500	12	1-179397-2

INSTRUCTION SHEET  
 取扱説明書  
 4-11-5654

COLOR	W2	W1	E	D	C	B	A	数量 (個) QTY/REEL	極数 POS	リール番号 コネクタ番号 TAPING P/N
色										

THIS DRAWING IS A CONTROLLED DOCUMENT.

DIMENSIONS: 単位: 純 mm

TOLERANCES UNLESS OTHERWISE SPECIFIED: 公差

0 PLC	± 0.2
1 PLC	± 0.2
2 PLC	± 0.2
3 PLC	± 0.2
4 PLC	± 0.2
ANGLES	± 3°

MATERIAL 材料 FINISH 仕上

DWN: K.SAKAWA 24FEB94  
 CHK: S.KUBOUCHI 24FEB94  
 APVD: S.KUBOUCHI 01NOV96

NAME 名称: **STE** TE Connectivity

PRODUCT SPEC 製品規格: ON TAPING EMBOSS CAP ASSEMBLY WITH BOSS  
 0.8mm PITCH BOARD TO BOARD CONNECTOR  
 MATING HEIGHT 3.0mm

取付適用規格 取付適用規格

SIZE 寸法: A3 CAGE CODE 00779 DRAWING NO. 番号: C-179397

RESTRICTED TO

CUSTOMER DRAWING SCALE 尺度: 4:1 SHEET 1 of 2 REV L2

4

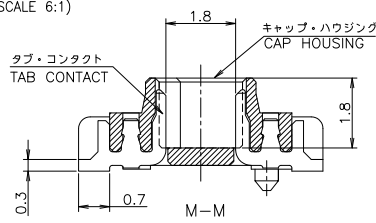
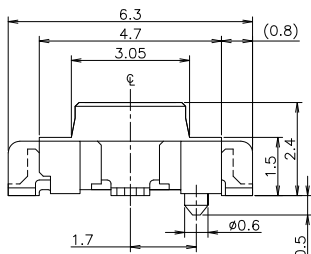
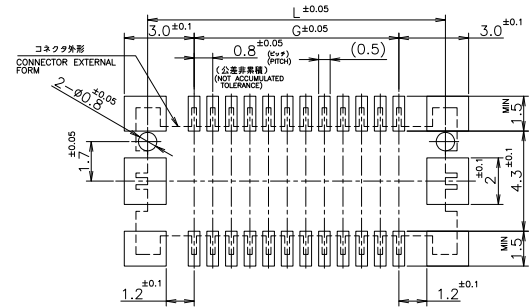
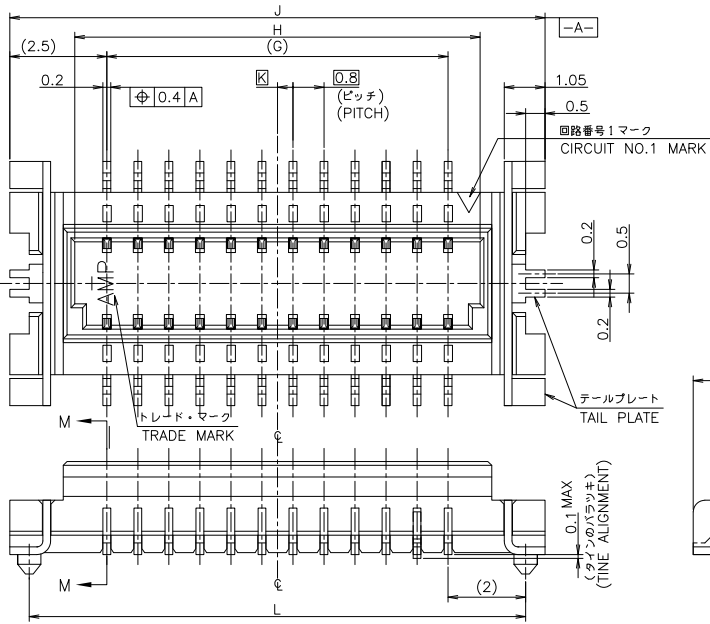
3

2

1

THIS DRAWING IS UNPUBLISHED. RELEASED FOR PUBLICATION FEB, 1994.  
 © COPYRIGHT 1994 By - ALL RIGHTS RESERVED.

LOC	DIST	REVISIONS				
P	LTR	変更	DESCRIPTION	DATE	DWN	APVD
-	-	SEE SHEET 1		-	-	-



0.241	15.2	---	16.2	12.8	11.2	30
0.361	23.2	---	24.2	20.8	19.2	50
0.301	19.2	0.4	20.2	16.8	15.2	40
0.241	15.2	---	16.2	12.8	11.2	30
0.205	12.8	0.4	13.8	10.4	8.8	24
0.157	9.6	0.4	10.6	7.2	5.6	16
0.145	8.8	---	9.8	6.4	4.8	14
0.133	8.0	0.4	9.0	5.6	4.0	12
重量 (g)	L	K	J	H	G	極数 POS

- △ 材料: ハウジング - 6T NYLON (高耐熱性ナイロン) ガラス30%, 色: ベージュ
- コンタクト - 焼青銅・鍍めつき(0.2t)
- テールプレート - 焼青銅・鍍めつき(0.2t)
- △ MATERIAL: HOUSING - 6T NYLON (HIGH HEAT-RESISTED NYLON), GF30%, COLOR: BEIGE.
- CONTACT - POST-TIN/PHOS-BROZ(0.2t)
- TAIL PLATE - POST-TIN/PHOS-BROZ(0.2t)

THIS DRAWING IS A CONTROLLED DOCUMENT.

DIMENSIONS:	TOLERANCES UNLESS OTHERWISE SPECIFIED:
單位: 概 mm	一般公差
0 PLC	± 0.2
1 PLC	± 0.2
2 PLC	± 0.2
3 PLC	± 0.2
4 PLC	± 0.2
ANGLES	± 3°

MATERIAL 材料 SEE NOTE △ 注 △ 参照

FINISH 仕上 SEE NOTE △ 注 △ 参照

DWN	CHK	APVD	PRODUCT SPEC	APPLICATION SPEC	WEIGHT	NAME	SIZE	CAGE CODE	DRAWING NO	RESTRICTED TO	
			製品規格	取付適用規格		TE Connectivity	A3	00779	179397		
CUSTOMER DRAWING						SCALE	10:1	SHEET	2 of 2	REV	L2