



### FEATURES:

- RoHS compliant
- 4 Pin SIP Package
- Low ripple and noise
- High efficiency up to 81%
- Operating temperature -40°C to + 85°C
- Input / Output isolation 1000 and 3000VDC
- Pin computable with multiple manufacturers

### Models Single output

Model	Input Voltage (V)	Output Voltage (V)	Output Current max (mA)	Isolation (VDC)	Efficiency (%)
AM1S-0505S-NZ	4.5-5.5	5	200	1000	78
AM1S-0509S-NZ	4.5-5.5	9	110	1000	79
AM1S-0512S-NZ	4.5-5.5	12	83	1000	80
AM1S-0515S-NZ	4.5-5.5	15	67	1000	78
AM1S-1205S-NZ	10.8-13.2	5	200	1000	78
AM1S-1209S-NZ	10.8-13.2	9	110	1000	80
AM1S-1212S-NZ	10.8-13.2	12	83	1000	81
AM1S-1215S-NZ	10.8-13.2	15	67	1000	79
AM1S-2405S-NZ	21.6-26.4	5	200	1000	79
AM1S-2409S-NZ	21.6-26.4	9	110	1000	80
AM1S-2412S-NZ	21.6-26.4	12	83	1000	81
AM1S-2415S-NZ	21.6-26.4	15	67	1000	79
AM1S-0505H30S-NZ	4.5-5.5	5	200	3000	70
AM1S-0509H30S-NZ	4.5-5.5	9	110	3000	75
AM1S-0512H30S-NZ	4.5-5.5	12	83	3000	78
AM1S-0515H30S-NZ	4.5-5.5	15	67	3000	80
AM1S-1205H30S-NZ	10.8-13.2	5	200	3000	72
AM1S-1209H30S-NZ	10.8-13.2	9	110	3000	76
AM1S-1212H30S-NZ	10.8-13.2	12	83	3000	79
AM1S-1215H30S-NZ	10.8-13.2	15	67	3000	81

### Input Specifications

Parameters	Conditions	Typical	Maximum	Units
Voltage range		4.5-5.5 10.8-13.2 21.6-26.4		VDC
Filter	Capacitor			

### Isolation Specifications

Parameters	Conditions	Typical	Maximum	Units
Rated voltage	60 sec	1000 or 3000		VDC
Resistance		> 1000		MOhm
Capacitance		60		pF

### Output Specifications

Parameters	Conditions	Typical	Maximum	Units
Voltage accuracy		See tolerance graph		
Short Circuit protection	1sec			
Line voltage regulation (Single)	For 1.0% of Vin		±1.2	%
Load voltage regulation (Single)	Load 10 – 100%		10	%
Temperature coefficient			±0.03	%/°C
Ripple & Noise	At 20MHz Bandwidth		75	mV p-p

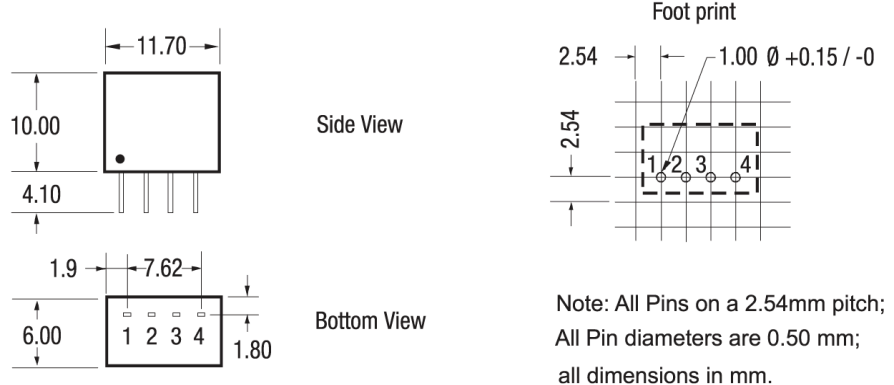
### General Specifications

Parameters	Conditions	Typical	Maximum	Units
Switching frequency	100% load	150		KHz
Operating temperature	Without derating	-40 to +85		°C
Storage temperature		-55 to +125		°C
Case temperature			90	°C
Cooling	Free air convection			
Humidity	Non Condensing		90	%
Case material		Plastic UL94-V0		
Weight		1.8		g
Dimensions		0.46 x 0.24 x 0.4 inches	11.7 x 6.0 x 10.0 mm	
MTBF		>1 000 000 hrs (MIL-HDBK -217F, Ground Benign, t=+25°C)		

### Pin Out Specifications

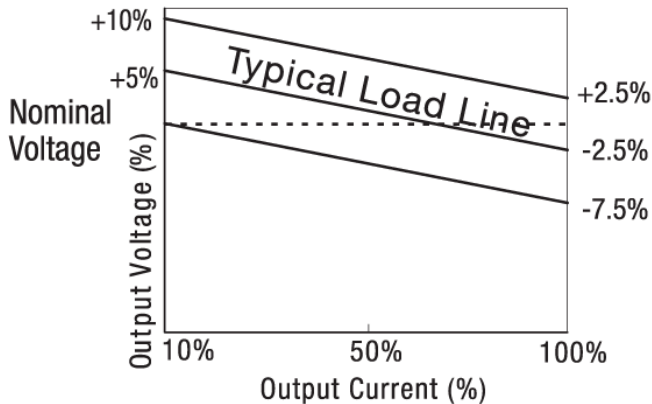
Pin	Single
1	- V Input
2	+V Input
3	-V Output
4	+V Output

### Dimensions

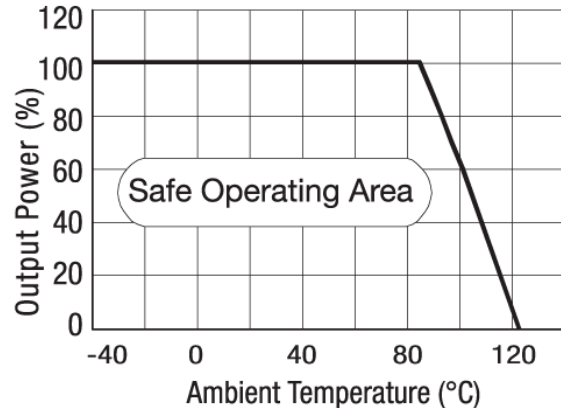


### Typical Characteristics

#### Tolerance Envelope Graph



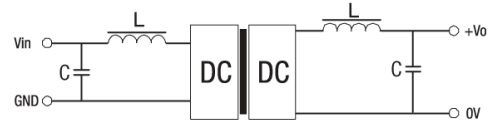
#### Temperature Derating Graph



### External capacitor

Vin (VDC)	External capacitor (uF)	Vout (VDC)	External capacitor (uF)
5	4.7	5	10
12	2.2	9	4.7
24	1	12	2.2
-	-	15	1

### Filtering



<Figure 1>

