

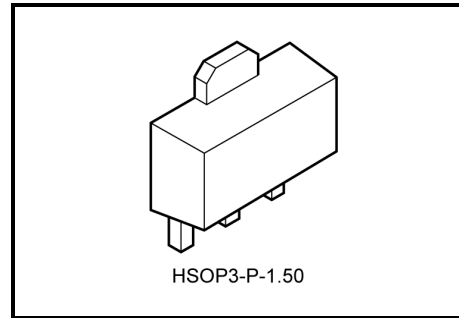
TOSHIBA Bipolar Linear Integrated Circuit Silicon Monolithic

TA76431F, TA76431FR

Adjustable Precision Shunt Regulator

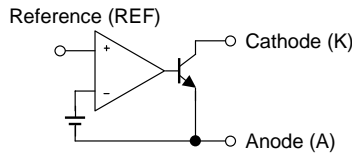
Features

- Precision Reference Voltage: $V_{REF} = 2.495\text{ V} \pm 2\%$
- Small Temperature Coefficient: $|\alpha V_{REF}| = 46\text{ ppm}/^\circ\text{C}$
- Adjustable Output Voltage: $V_{REF} \leq V_{OUT} \leq 36\text{ V}$
- Low Dynamic Output Impedance: $|Z_{KA}| = 0.15\ \Omega$ (Typ.)
- Small Flat Package
- TA76431FR is a new Toshiba shunt regulator.
This device's pin assignment is the reverse of that of the TA76431F.

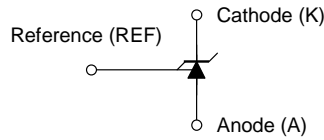


Weight: 0.05 g (typ.)

Functional Block Diagram



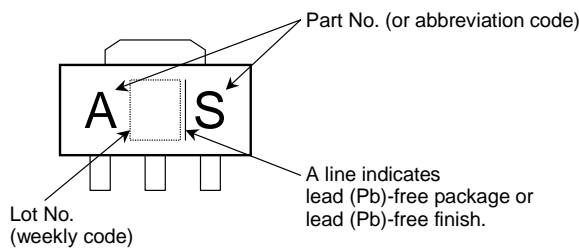
Circuit Symbol



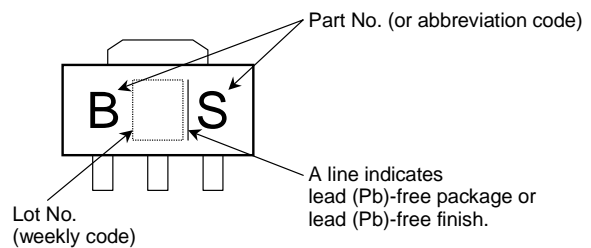
This IC contains electrostatic sensitive elements. Please take care to avoid generating static electricity when handling these devices.

Marking

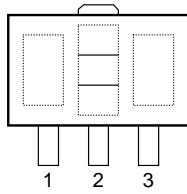
(1) TA76431F



(2) TA76431FR



Pin Assignment

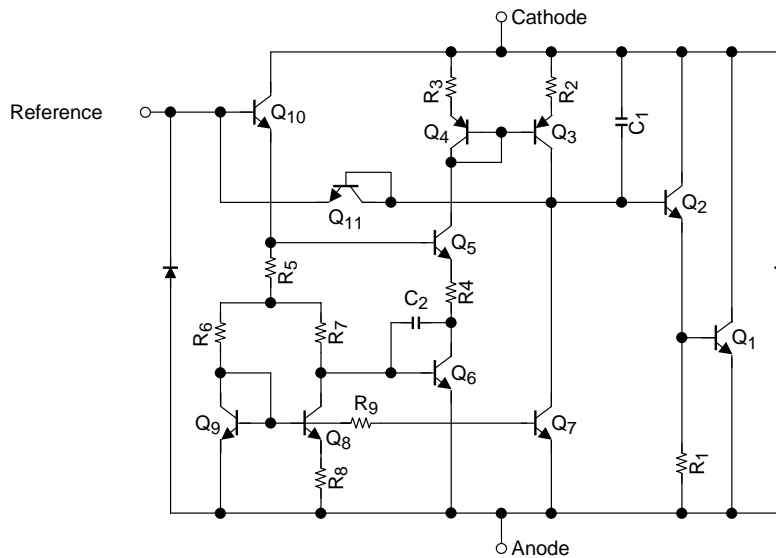


No.	(1) TA76431F	(2) TA76431FR
1	Cathode (K)	Reference (REF)
2	Anode (A)	Anode (A)
3	Reference (REF)	Cathode (K)

How to Order

No.	Product No.	Package Type	Packing Type	Minimum Order
(1)	TA76431F	PW-MINI (SOT-89) (surface-mount type)	On cut tape (TE12L): 100/tape section	100
	TA76431F (TE12L)		Embossed tape: 1000/tape	1 tape
(2)	TA76431FR		On cut tape (TE12L): 100/tape section	100
	TA76431FR (TE12L)		Embossed tape: 1000/tape	1 tape

Equivalent Circuit



Maximum Ratings (Ta = 25°C)

Characteristics	Symbol	Rating	Unit
Cathode voltage	V _{KA}	37	V
Cathode current	I _K	-100~150	mA
Reference voltage	V _{REF}	7	V
Reference current	I _{REF}	50	μA
Reference-anode reverse current	-I _{REF}	10	mA
Power dissipation (Ta = 25°C)	P _D	500	mW
		1000 (Note)	
Operating temperature	T _{opr}	-40~85	°C
Storage temperature	T _{stg}	-55~150	°C

Note: Mounted on ceramic substrate (250 mm² × 0.8 mm t)

Recommended Operating Conditions

Characteristics	Symbol	Min	Typ.	Max	Unit
Cathode voltage	V _{KA}	V _{REF}	—	36	V
Cathode current	I _K	1	—	100	mA
Operating temperature	T _{opr}	-40	—	85	°C

Electrical Characteristics

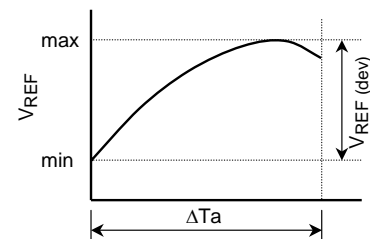
(Unless otherwise specified, Ta = 25°C, I_K = 10 mA)

Characteristics	Symbol	Test Condition	Min	Typ.	Max	Unit
Reference voltage	V _{REF}	V _{KA} = V _{REF}	2.440	2.495	2.550	V
Deviation of reference input voltage over temperature	V _{REF (dev)}	0°C ≤ Ta ≤ 70°C, V _{KA} = V _{REF}	—	8	17	mV
Ratio of change in reference input voltage to the change in cathode voltage	ΔV _{REF} /ΔV	V _{REF} ≤ V _{KA} ≤ 10 V	—	0.8	2.7	mV/V
		10 V ≤ V _{KA} ≤ 36 V	—	0.5	2.0	
Reference Input current	I _{REF}	V _{KA} = V _{REF}	—	1.4	4	μA
Deviation of reference input current over temperature	I _{REF (dev)}	0°C ≤ Ta ≤ 70°C, V _{KA} = V _{REF} , R ₁ = 10 kΩ, R ₂ = ∞	—	0.3	1.2	μA
Minimum cathode current for regulation	I _{Kmin}	V _{KA} = V _{REF}	—	0.4	1.0	mA
Off-State cathode current	I _{Koff}	V _{KA} = 36 V, V _{REF} = 0 V	—	—	1.0	μA
Dynamic impedance	Z _{KA}	V _{KA} = V _{REF} , f ≤ 1 kHz, 1 mA ≤ I _K ≤ 100 mA	—	0.15	0.5	Ω

The deviation parameters V_{REF (dev)} and I_{REF (dev)} are defined as the maximum variation of the V_{REF} and I_{REF} over the rated temperature range.

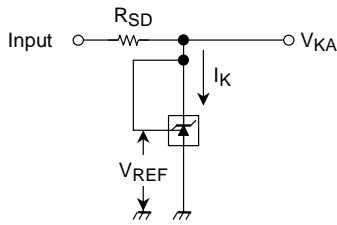
The average temperature coefficient of the V_{REF} is defined as:

$$|\alpha V_{REF}| = \frac{\left(\frac{V_{REF (dev)}}{V_{REF @ 25^\circ C}} \right) \times 10^6}{\Delta T_a} \quad (\text{ppm}/^\circ\text{C})$$

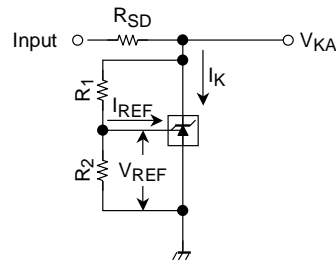


Test Parameter

(1) $V_{KA} = V_{REF}$ Mode

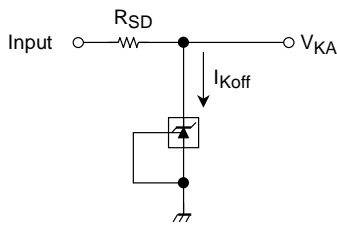


(2) $V_{KA} > V_{REF}$ Mode



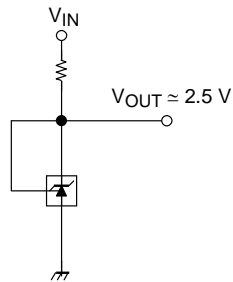
$$V_{KA} = V_{REF} \left(1 + \frac{R_1}{R_2} \right) + I_{REF} \cdot R_1$$

(3) OFF-State Mode

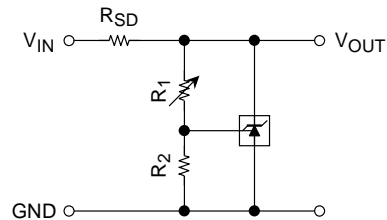


Typical Application Circuits

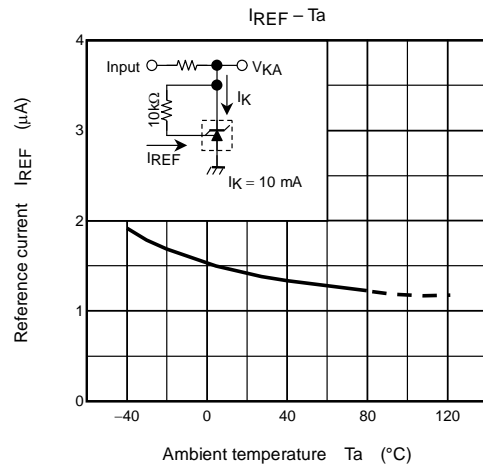
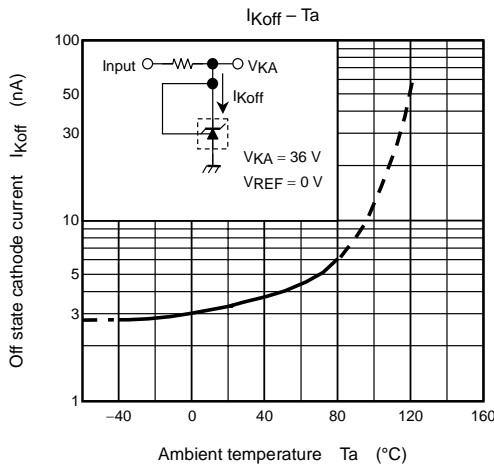
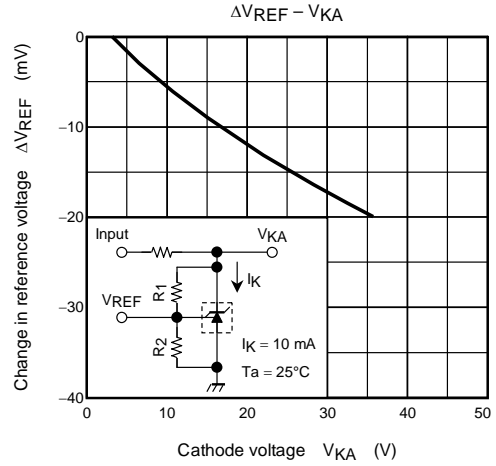
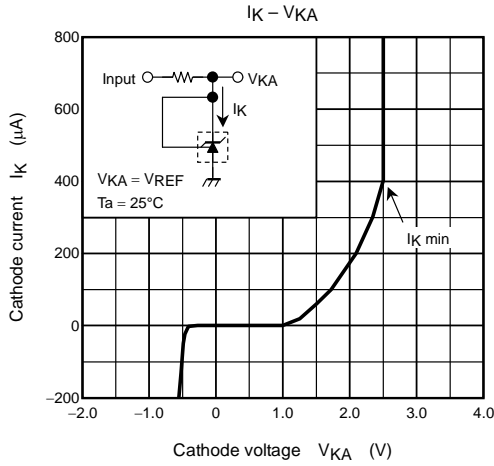
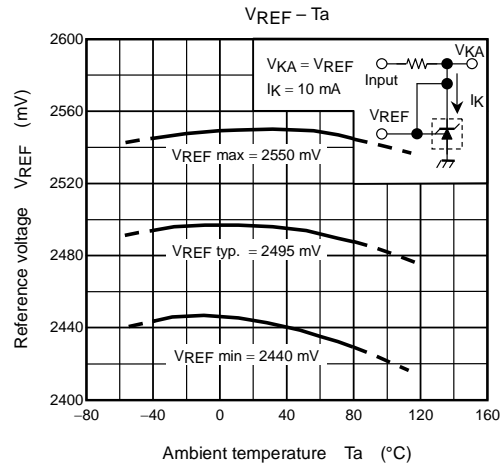
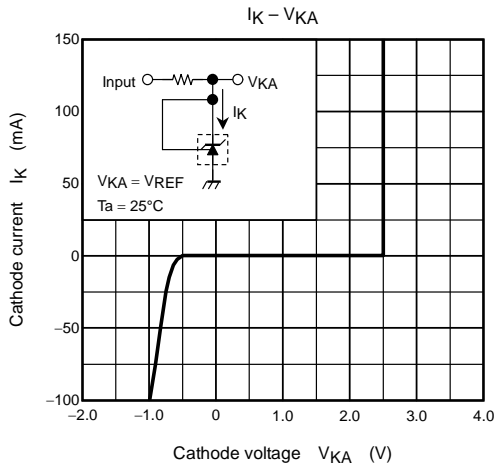
(1) 2.5 V Reference

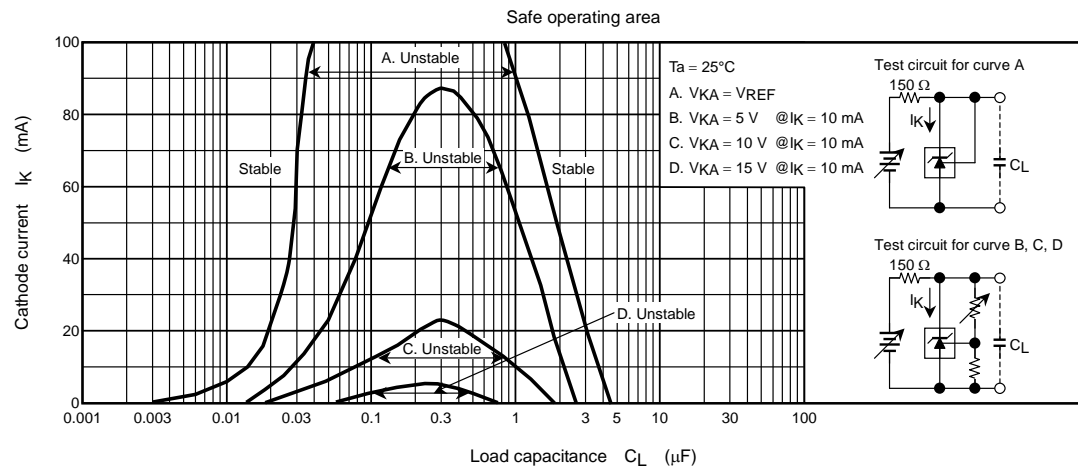
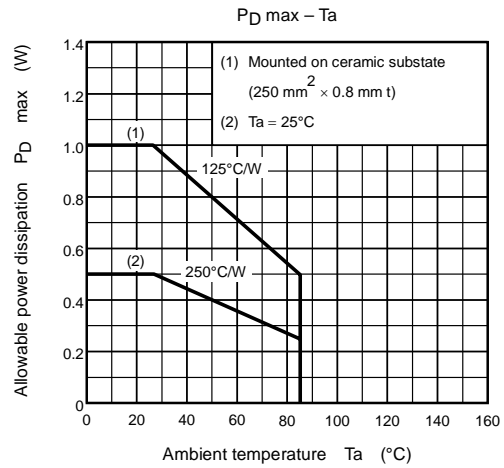
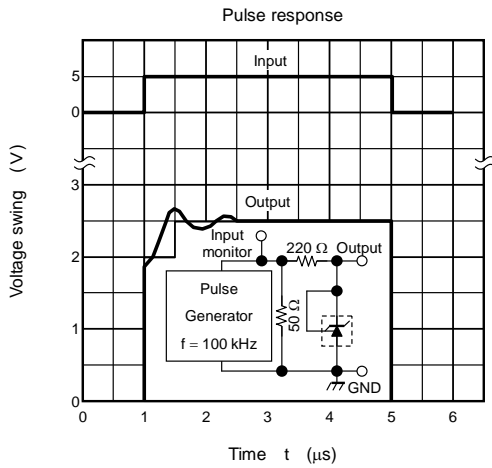
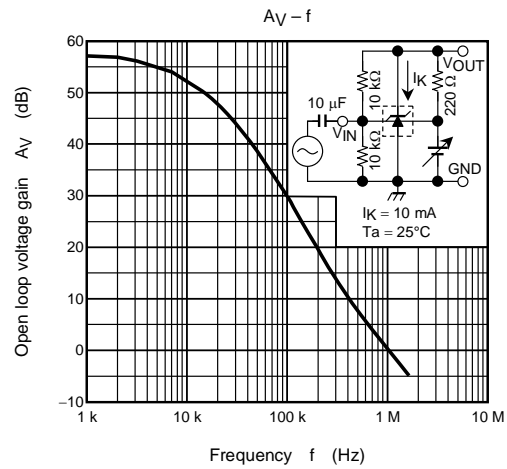
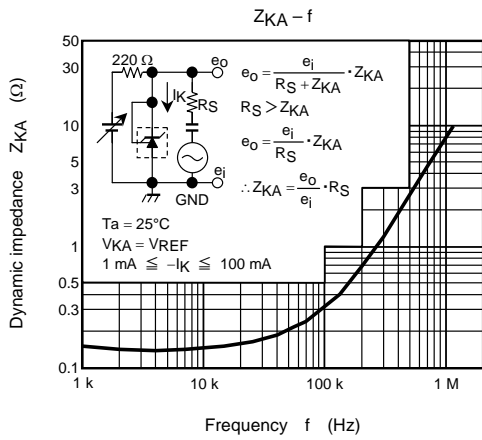


(2) Shunt Regulator



$$V_{OUT} = V_{REF} \left(1 + \frac{R_1}{R_2} \right) + I_{REF} \cdot R_1$$

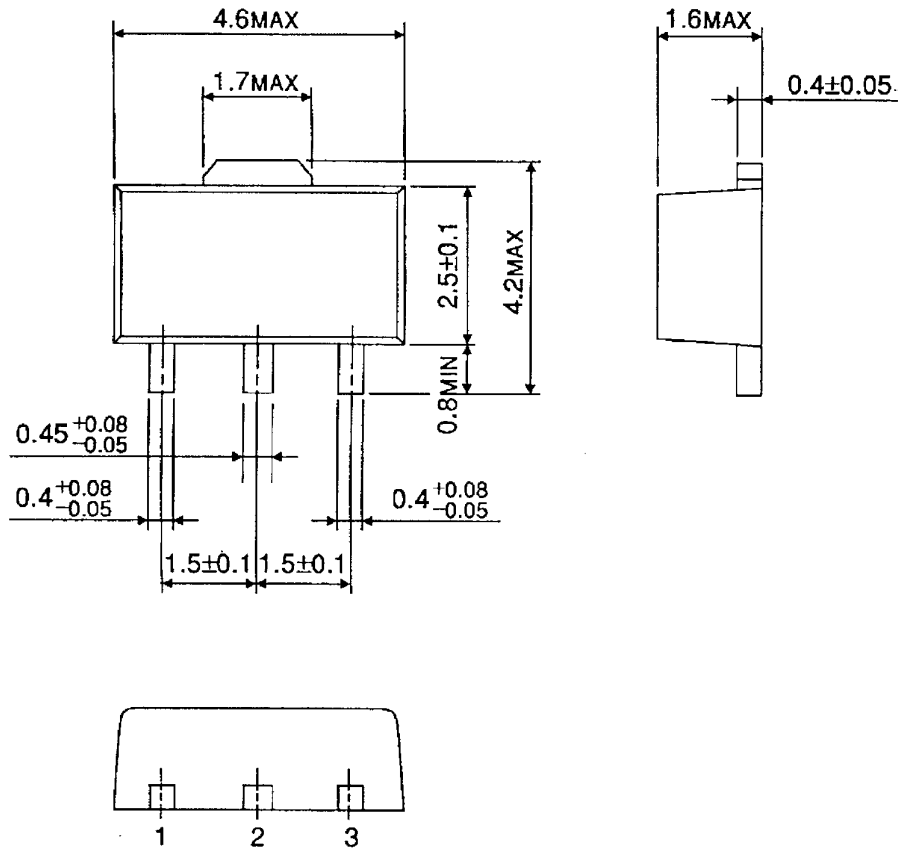




Package Dimensions

HSOP3-P-1.50

Unit : mm



Weight: 0.05 g (typ.)

RESTRICTIONS ON PRODUCT USE

030619EBA

- The information contained herein is subject to change without notice.
- The information contained herein is presented only as a guide for the applications of our products. No responsibility is assumed by TOSHIBA for any infringements of patents or other rights of the third parties which may result from its use. No license is granted by implication or otherwise under any patent or patent rights of TOSHIBA or others.
- TOSHIBA is continually working to improve the quality and reliability of its products. Nevertheless, semiconductor devices in general can malfunction or fail due to their inherent electrical sensitivity and vulnerability to physical stress. It is the responsibility of the buyer, when utilizing TOSHIBA products, to comply with the standards of safety in making a safe design for the entire system, and to avoid situations in which a malfunction or failure of such TOSHIBA products could cause loss of human life, bodily injury or damage to property.
In developing your designs, please ensure that TOSHIBA products are used within specified operating ranges as set forth in the most recent TOSHIBA products specifications. Also, please keep in mind the precautions and conditions set forth in the "Handling Guide for Semiconductor Devices," or "TOSHIBA Semiconductor Reliability Handbook" etc..
- The TOSHIBA products listed in this document are intended for usage in general electronics applications (computer, personal equipment, office equipment, measuring equipment, industrial robotics, domestic appliances, etc.). These TOSHIBA products are neither intended nor warranted for usage in equipment that requires extraordinarily high quality and/or reliability or a malfunction or failure of which may cause loss of human life or bodily injury ("Unintended Usage"). Unintended Usage include atomic energy control instruments, airplane or spaceship instruments, transportation instruments, traffic signal instruments, combustion control instruments, medical instruments, all types of safety devices, etc.. Unintended Usage of TOSHIBA products listed in this document shall be made at the customer's own risk.
- The products described in this document are subject to the foreign exchange and foreign trade laws.
- TOSHIBA products should not be embedded to the downstream products which are prohibited to be produced and sold, under any law and regulations.