

Copyright FCI

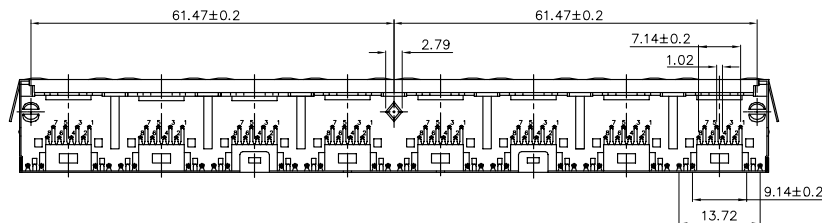
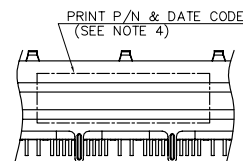
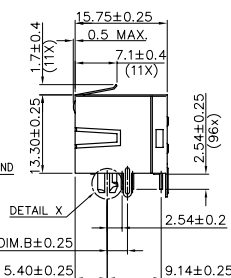
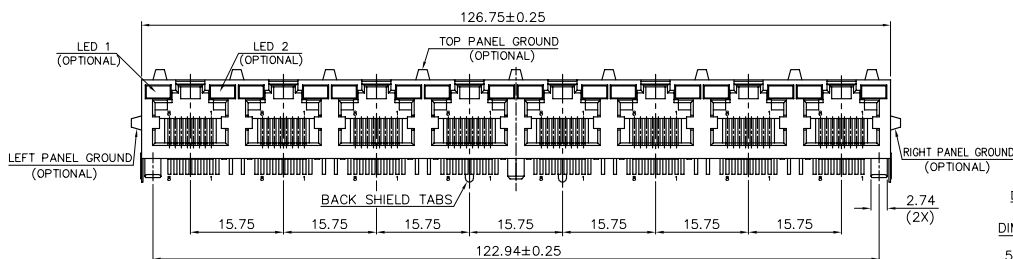
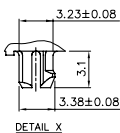
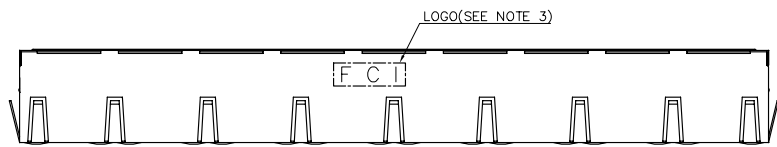
FCI
FCIconnect.com

1 | 2

3 |

4

P/N	DIM.B
10118068-XXX6XXXLF	3.43



mat'l. code	surface	tolerance	projection	product family												
	ASME Y14.5	ASME Y14.5		GANGED M JACK												
ltr	ecn	no	dr	date												
A			WL	11/04/11												
tolerances unless otherwise specified																
	angles															
		X.X±0.25														
		X.XX±0.13														
		X.XXX±0.05														
			MM													
			[INCH]													
			scale													
	dr	WENDY CHEN	05/11/11													
	enr	WENDY CHEN	05/11/11													
	chr	WENDY CHEN	05/11/11													
	appd	GARY HSIEH	05/11/11													
sheet	revision	A	A	A												
index	sheet	1	2	3												
<table border="1"> <tr> <td>title</td> <td colspan="3">CAT 3 MULTI-PORTS TAB UP 1x8 WITH SHIELD, W/ LED</td> </tr> <tr> <td>dwg no</td> <td>10118068</td> <td>sheet 1 of 3</td> <td>size A4</td> </tr> <tr> <td>type</td> <td colspan="3">CUSTOMER Drawing</td> </tr> </table>					title	CAT 3 MULTI-PORTS TAB UP 1x8 WITH SHIELD, W/ LED			dwg no	10118068	sheet 1 of 3	size A4	type	CUSTOMER Drawing		
title	CAT 3 MULTI-PORTS TAB UP 1x8 WITH SHIELD, W/ LED															
dwg no	10118068	sheet 1 of 3	size A4													
type	CUSTOMER Drawing															

form: A4mmXLc

1 |

2 |

3 |

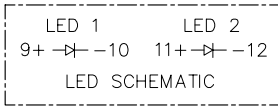
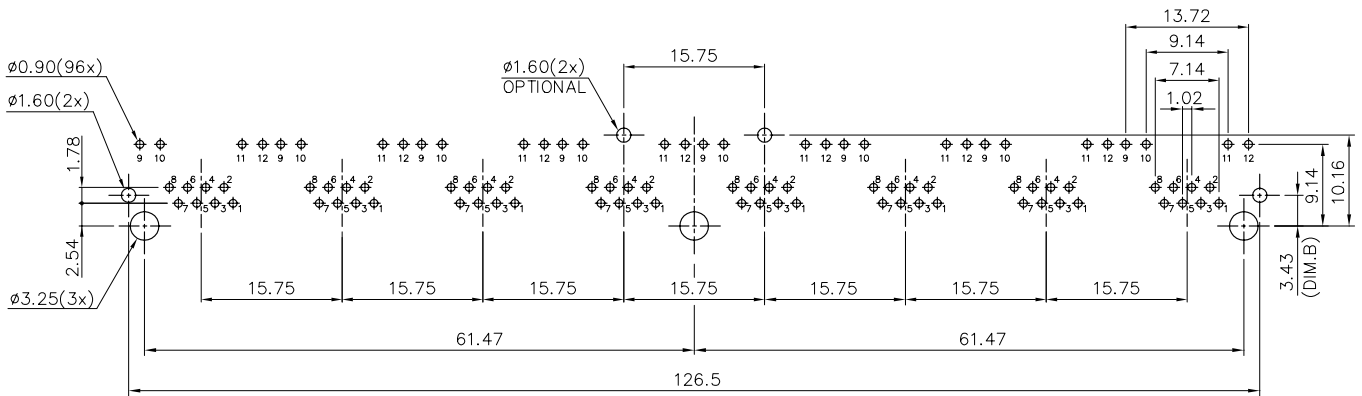
4



1 | 2

3 |

4



RECOMMENDED PCB LAYOUT
 RECOMMENDED PCB THICKNESS: 1.6mm
 TOLERANCE: ±0.05mm (TOP VIEW)

mat'l. code		surface	tolerance	projection	product family
		ASME Y14.5	ASME Y14.5		GANGED M JACK
ltr	ecr no	dr	date	title	
A				CAT 3 MULTI-PORTS TAB UP	
tolerances unless otherwise specified				MM	1x8 WITH SHIELD, W/LED
angles		DEC	X.X±0.25	[INCH]	
DEC		DEC	X.XX±0.13	scale	
X°±1'		DEC	X.XXX±0.05		
dr	WENDY CHEN	05/11/11			dwg no
enr	WENDY CHEN	05/11/11			sheet 2 of 3
chr	WENDY CHEN	05/11/11			10118068
appd	GARY HSIEH	05/11/11			A4
sheet index	revision sheet			type	CUSTOMER Drawing

form: A4mmXLc

1 |

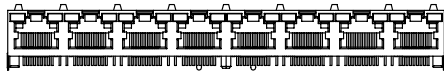
2 |

3 |

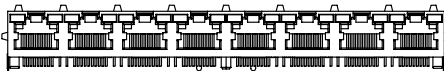
4

NOTE:

1. MATERIAL:
HOUSING: HIGH TEMPERATURE THERMOPLASTIC, UL94V-0
COLOR: BLACK.
CONTACTS: COPPER ALLOY.
SHIELD: COPPER ALLOY.
LED SOLDER TAIL: STEEL.
2. FINISH:
CONTACTS: 50u" MIN. NICKEL UNDER PLATED OVER ALL.
SELECTIVE GOLD PLATED ON CONTACT AREA,
1u" GOLD PLATED ON SOLDER TAIL.
LED SOLDER TAIL: 100u" MIN. BRIGHT TIN OVER
50u" NICKEL UNDER PLATED.
SHIELD: 20u" MIN. NICKEL OVER ALL.
3. LASER MARK FCI LOGO ON THE TOP OF SHIELD.
4. "DATE CODE" DESCRIPTION:
XX XX
 |
 WEEK
 |
 YEAR (EX. : 10--2010)
5. PRODUCT PERFORMANCE PER SPEC. : GS-12-0990.
6. PACKING SPEC. : GS-14-2170.
7. THIS PRODUCT MEETS THE EUROPEAN UNION DIRECTIVE AS DESCRIBED
IN GS-22-008.
8. THE HOUSING WILL WITHSTAND EXPOSURE TO 260°C PEAK TEMPERATURE
FOR 5 SECONDS IN A WAVE SOLDER APPLICATION WITH A CIRCUIT BOARD.



10118068-XX0XXXXLF
(WITHOUT PANEL GROUND)



10118068-XX3XXXXLF
(3 SIDES PANEL GROUND)

9. PART NUMBER DESCRIPTION:

- 10118068-X X X X X X X LF
- LEAD FREE
 - 0 : RESERVED (NOT USED)
 - PACKAGING
 - 1 : TRAY
 - OPTIONAL BACK SHIELD TAB
 - 2 : WITH 2 BACK SHIELD TABS
 - OPTIONAL RIGHT / LEFT SHIELD TAB
 - 6 : DIM.B=3.43
 - OPTIONAL PANEL GROUND
 - 0 : WITHOUT PANEL GROUND
 - 3 : TOP/RIGHT/LEFT 3 SIDES WITH PANEL GROUND
 - LED COLOR
 - 0 : WITHOUT LED
 - 1 : LED1: GREEN / LED2: YELLOW
 - 2 : LED1: YELLOW / LED2: GREEN
 - 3 : LED1: GREEN / LED2: GREEN
 - CONTACT AREA PLATING
 - 1 : 15u" GOLD PLATING
 - 2 : 30u" GOLD PLATING
 - 5 : 1u" GOLD FLASH PLATING

mat'l. code		surface	tolerance	projection	product family
		ASME Y14.5 ✓	ASME Y14.5		GANGED M JACK
ltr	ecn no	dr	date	title	
A				CAT 3 MULTI-PORTS TAB UP 1x8 WITH SHIELD, W/LED	
		tolerances unless otherwise specified		MM	sheet 3 of 3
		angles	X.X±0.25	[INCH]	size
		dr	X.XX±0.13	scale	A4
		chr	X.XXX±0.05		10118068
		dr	WENDY CHEN 05/11/11	type	
		enr	WENDY CHEN 05/11/11	CUSTOMER Drawing	
		chr	WENDY CHEN 05/11/11		
		appd	GARY HSIEH 05/11/11		
sheet index	revision sheet				