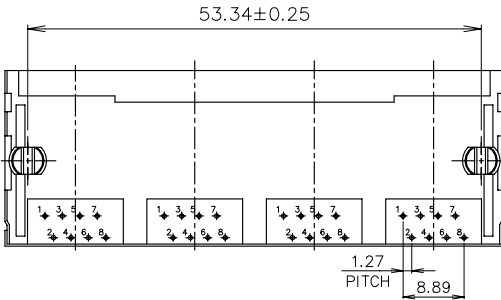
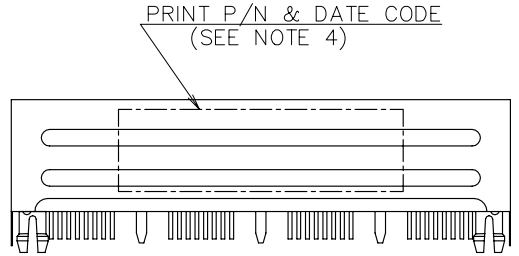
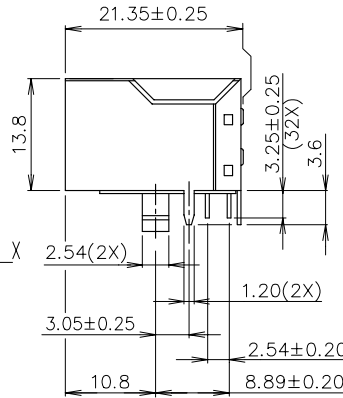
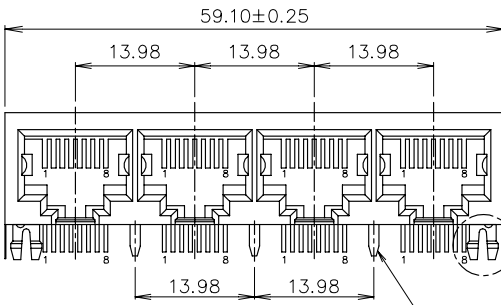
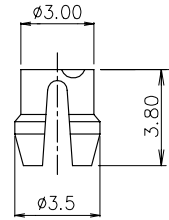
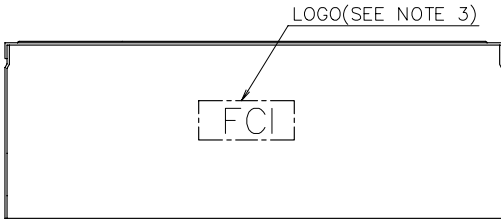
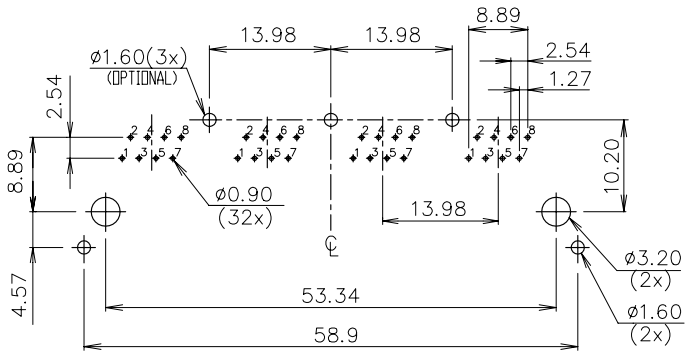


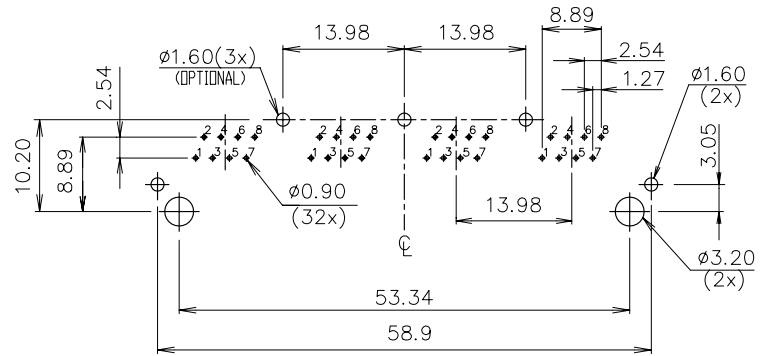
mat'l. code		surface ASME Y14.5 ✓		tolerance ASME Y14.5		projection		product family	
GANGED M JACK									
ltr	ecn no	dr	date	tolerances unless otherwise specified					
A		WL	11/04/11	angles	X.X±0.25	MM	title		
				DEC	X.XX±0.13	[INCH]	CAT 3 MULTI-PORTS TAB DOWN		
				X'±1"	X.XXX±0.05	scale	1x4 WITH SHIELD, W/O LED		
		dr	WENDY CHEN	05/03/11	FCI		dwg no		
		enrg	WENDY CHEN	05/03/11			sheet 1 of 4 size		
		chr	WENDY CHEN	05/03/11			10118062 A4		
		appd	GARY HSIEH	05/03/11			type		
							CUSTOMER Drawing		
sheet index	revision sheet	A	A	A	A	A	A	A	A
		1	2	3	4				



mat'l. code		surface	tolerance	projection	product family
itr		ASME Y14.5	ASME Y14.5		GANGED M JACK
ecn	no	tolerances unless otherwise specified			title
A		angles	X.X±0.25	MM	CAT 3 MULTI-PORTS TAB DOWN
		flatness	X.XX±0.13	[INCH]	1x4 WITH SHIELD, W/O LED
		total run out	X.XXX±0.05	scale	dwg no
		dr	WENDY CHEN 05/03/11		sheet 2 of 4
		enr	WENDY CHEN 05/03/11		10118062
		chr	WENDY CHEN 05/03/11		A4
		appd	GARY HSIEH 05/03/11		type
sheet index	revision sheet				CUSTOMER Drawing



RECOMMENDED PCB LAYOUT
RECOMMENDED PCB THICKNESS: 1.6mm
TOLERANCE: ±0.05 (TOP VIEW)



RECOMMENDED PCB LAYOUT
RECOMMENDED PCB THICKNESS: 1.6mm
TOLERANCE: ±0.05 (TOP VIEW)

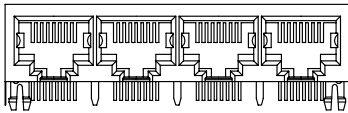
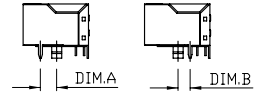
mat'l. code		surface ASME Y14.5		tolerance ASME Y14.5		projection		product family GANGED M JACK		
ltr	ecn no	dr	date	tolerances unless otherwise specified				title		
A				angles	MM	[INCH]	CAT 3 MULTI-PORTS TAB DOWN 1x4 WITH SHIELD, W/O LED			
				X°±1'	X.XX±0.25	X.XX±0.13	scale			
					X.XXX±0.05		sheet 3 of 4			
				dr	WENDY CHEN	05/03/11	FCJ		dwg no	
				enr	WENDY CHEN	05/03/11			10118062	A4
				chr	WENDY CHEN	05/03/11			type	
				appd	GARY HSIEH	05/03/11			CUSTOMER Drawing	
sheet index	revision	sheet								

NOTE:

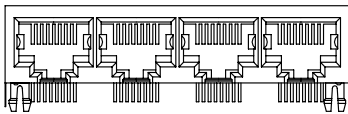
1. MATERIAL:
HOUSING: HIGH TEMPERATURE THERMOPLASTIC , UL94V-0
COLOR: BLACK.
CONTACTS: COPPER ALLOY.
SHIELD: COPPER ALLOY.
2. FINISH:
CONTACTS: 50u" MIN. NICKEL UNDER PLATED OVER ALL.
SELECTIVE GOLD PLATED ON CONTACT AREA,
1u" GOLD PLATED ON SOLDER TAIL.
SHIELD: 20u" MIN. NICKEL OVER ALL.
3. LASER MARK FCI LOGO ON THE TOP OF SHIELD.
4. "DATE CODE" DESCRIPTION:
XX XX
 |
 | WEEK
 |
 | YEAR (EX. : 10--2010)
5. PRODUCT PERFORMANCE PER SPEC. : GS-12-0990.
6. PACKING SPEC. : GS-14-2170.
7. THIS PRODUCT MEETS THE EUROPEAN UNION DIRECTIVE AS DESCRIBED IN GS-22-008.
8. THE HOUSING WILL WITHSTAND EXPOSURE TO 260°C PEAK TEMPERATURE FOR 5 SECONDS IN A WAVE SOLDER APPLICATION WITH A CIRCUIT BOARD.

9. PART NUMBER DESCRIPTION:

- 10118062-X X X X X X L F
- LEAD FREE
 - 0 : RESERVED (NOT USED)
 - PACKAGING
1 : TRAY
 - OPTIONAL BACK SHIELD TAB
0 : WITHOUT BACK SHIELD TAB
3 : WITH 3 BACK SHIELD TABS
 - OPTIONAL RIGHT / LEFT SHIELD TAB
1 : DIM.A=4.57
5 : DIM.B=3.05
 - OPTIONAL PANEL GROUND
0 : WITHOUT PANEL GROUND
 - LED COLOR
0 : WITHOUT LED
 - CONTACT AREA PLATING
1 : 15u" GOLD PLATING
2 : 30u" GOLD PLATING
5 : 1u" GOLD FLASH PLATING



10118062-XXXX3XXLF
WITH 3 BACK SHIELD TABS



10118062-XXXX0XXLF
WITHOUT BACK SHIELD TAB

mat'l. code		surface ASME Y14.5	tolerance ASME Y14.5	projection	product family GANGED M JACK
ltr	ecn no	dr	date	title	
A				CAT 3 MULTI-PORTS TAB DOWN 1x4 WITH SHIELD, W/O LED	
angles		tolerances unless otherwise specified		MM [INCH]	scale
X°±1'		X.XX±0.25 X.XX±0.13 X.XXX±0.05		MM [INCH]	
dr	WENDY CHEN	05/03/11		FCI	
enr	WENDY CHEN	05/03/11		sheet 4 of 4 size	
chr	WENDY CHEN	05/03/11		10118062 A4	
appd	GARY HSIEH	05/03/11		type CUSTOMER Drawing	
sheet index	revision sheet				