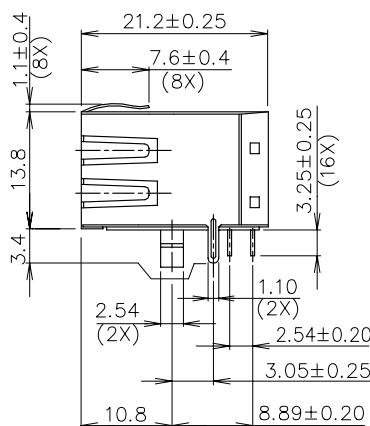
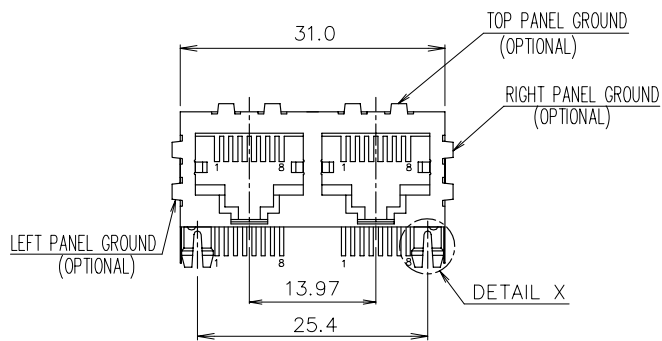
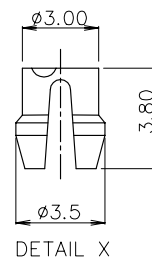
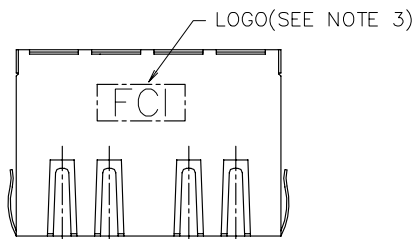
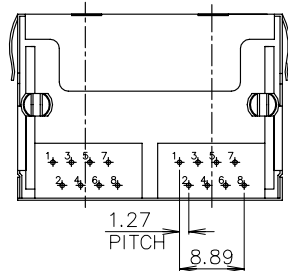
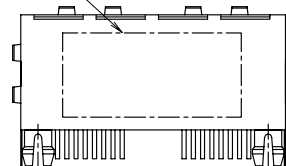


mat'l. code		surface	tolerance	projection	product family
ASME Y14.5		ASME Y14.5	ASME Y14.5		GANGED M JACK
ltr	ecn no	dr	date	title	
A		WL	11/04/11	CAT 3 MULTI-PORTS TAB DOWN 1x2 WITH SHIELD, W/O LED	
tolerances unless otherwise specified		angles	mm	title	
X.X±0.25		mm	[INCH]	CAT 3 MULTI-PORTS TAB DOWN 1x2 WITH SHIELD, W/O LED	
X.XX±0.13		mm	[INCH]	title	
X.XXX±0.05		mm	[INCH]	CAT 3 MULTI-PORTS TAB DOWN 1x2 WITH SHIELD, W/O LED	
X'±1"		mm	[INCH]	title	
dr		WENDY CHEN	05/03/11	dwg no	
enr		WENDY CHEN	05/03/11	sheet 1 of 4	
chr		WENDY CHEN	05/03/11	size	
appd		GARY HSIEH	05/03/11	A4	
sheet		revision	A	type	
index		sheet	1	CUSTOMER Drawing	
			2		
			3		
			4		



PRINT P/N & DATE CODE
(SEE NOTE 4)



mat'l. code		surface	tolerance	projection	product family	
ltr ecn no dr date		ASME Y14.5	ASME Y14.5		GANGED M JACK	
A		tolerances unless otherwise specified		MM	title	
		angles	X.X±0.25	[INCH]	CAT 3 MULTI-PORTS TAB DOWN	
		radius	X.XX±0.13	scale	1x2 WITH SHIELD, W/O LED	
		X°±1'	X.XXX±0.05		dwg no	
		dr	WENDY CHEN 05/03/11		sheet 2 of 4 size	
		enrg	WENDY CHEN 05/03/11		10118061	A4
		chr	WENDY CHEN 05/03/11		type	CUSTOMER Drawing
		appd	GARY HSIEH 05/03/11			
sheet index	revision sheet					



Copyright FCI.



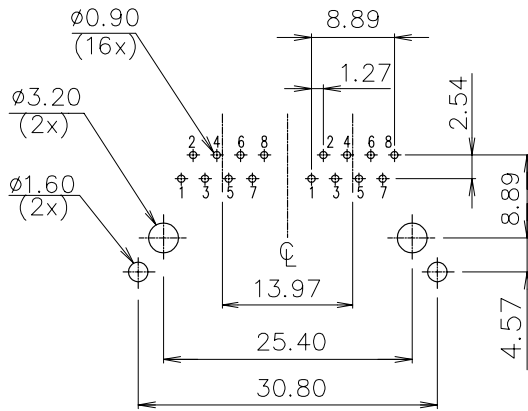
FCIconnect.com



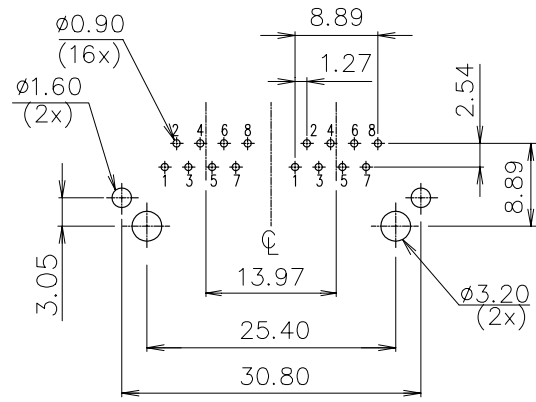
1 | 2

3 |

4



RECOMMENDED PCB LAYOUT
 RECOMMENDED PCB THICKNESS: 1.6mm
 TOLERANCE: ±0.05 (TOP VIEW)



RECOMMENDED PCB LAYOUT
 RECOMMENDED PCB THICKNESS: 1.6mm
 TOLERANCE: ±0.05 (TOP VIEW)

mat'l. code		surface ASME Y14.5		tolerance ASME Y14.5		projection		product family GANGED M JACK	
ltr	ecr	no	dr	date		tolerances unless otherwise specified		title	
A						X.X±0.25		CAT 3 MULTI-PORTS TAB DOWN	
						X.XX±0.13		1x2 WITH SHIELD, W/O LED	
						X.XXX±0.05		scale	
						dr		WENDY CHEN 05/03/11	
						enrg		WENDY CHEN 05/03/11	
						chr		WENDY CHEN 05/03/11	
						appd		GARY HSIEH 05/03/11	
sheet index		revision sheet						FCI	
								dwg no 10118061	
								sheet 3 of 4 size A4	
								type CUSTOMER Drawing	

form: A4mmXLc

1 |

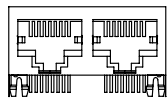
2 |

3 |

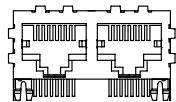
4

NOTE:

- MATERIAL:
HOUSING: HIGH TEMPERATURE THERMOPLASTIC, UL94V-0
COLOR: BLACK.
CONTACTS: COPPER ALLOY.
SHIELD: COPPER ALLOY.
- FINISH:
CONTACTS: 50u" MIN. NICKEL UNDER PLATED OVER ALL.
SELECTIVE GOLD PLATED ON CONTACT AREA,
1u" GOLD PLATED ON SOLDER TAIL.
SHIELD: 20u" MIN. NICKEL OVER ALL.
- LASER MARK FCI LOGO ON THE TOP OF SHIELD.
- "DATE CODE" DESCRIPTION:
XX XX
WEEK
YEAR (EX. : 10--2010)
- PRODUCT PERFORMANCE PER SPEC. : GS-12-0990.
- PACKING SPEC. : GS-14-2170.
- THIS PRODUCT MEETS THE EUROPEAN UNION DIRECTIVE AS DESCRIBED IN GS-22-008.
- THE HOUSING WILL WITHSTAND EXPOSURE TO 260°C PEAK TEMPERATURE FOR 5 SECONDS IN A WAVE SOLDER APPLICATION WITH A CIRCUIT BOARD.



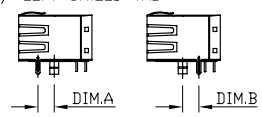
10118061-XX0XXXXLF
(WITHOUT PANEL GROUND)



10118061-XX3XXXXLF
(3 SIDES PANEL GROUND)

9. PART NUMBER DESCRIPTION:

- 10118061-X X X X X X LF
- LEAD FREE
 - 0 : RESERVED (NOT USED)
 - PACKAGING
 - 1 : TRAY
 - OPTIONAL BACK SHIELD TAB
 - 0 : WITHOUT BACK SHIELD TAB
 - OPTIONAL RIGHT / LEFT SHIELD TAB
 - 1 : DIM.A=4.57
 - 5 : DIM.B=3.05
 - OPTIONAL PANEL GROUND
 - 0 : WITHOUT PANEL GROUND
 - 3 : TOP/RIGHT/LEFT 3 SIDES WITH PANEL GROUND
 - LED COLOR
 - 0 : WITHOUT LED
 - CONTACT AREA PLATING
 - 1 : 15u" GOLD PLATING
 - 2 : 30u" GOLD PLATING
 - 5 : 1u" GOLD FLASH PLATING



mat'l. code	surface ASME Y14.5	tolerance ASME Y14.5	projection	product family GANGED M JACK
ltr	ecn no	dr	date	tolerances unless otherwise specified
A				angles X.X±0.25 X.XX±0.13 X'±1"
				dr WENDY CHEN 05/03/11 enr WENDY CHEN 05/03/11 chr WENDY CHEN 05/03/11 appd GARY HSIEH 05/03/11
				MM [INCH] scale
				FCI
				title CAT 3 MULTI-PORTS TAB DOWN 1x2 WITH SHIELD, W/O LED
				dwg no 10118061
				sheet 4 of 4 size A4
				type CUSTOMER Drawing
sheet index	revision sheet			