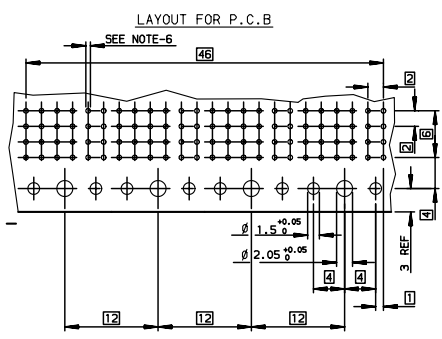
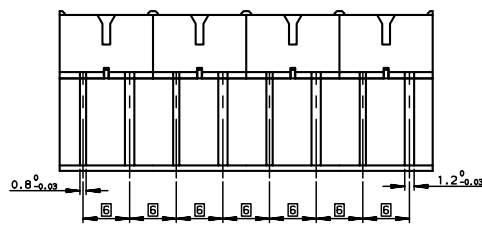
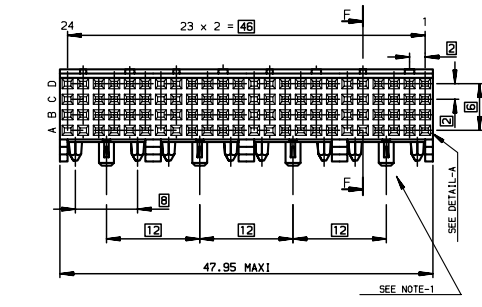
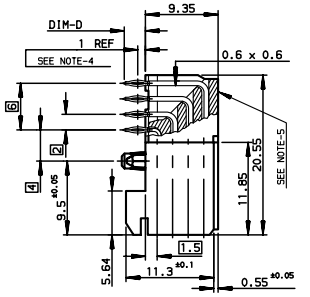
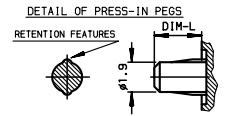
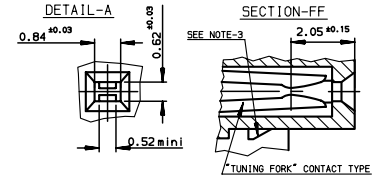


TIN LEAD PART NUMBER

Part Number:	HM1F43FDP000H6	
TERMINATION TYPE	D = 2.90 ±0.3	L = 3 ±0.05

LEAD FREE PART NUMBER

Part Number:	HM1F43FDP000H6LF	
TERMINATION TYPE	D = 2.90 ±0.3	L = 3 ±0.05



- NOTE-1: PRESS-IN RETENTION PEG
- NOTE-2: CONNECTORS WITH PCB-2.4mm ARE COMPATIBLE WITH WIDE AND NARROW BODIES
- NOTE-3: PLUG FOR CODING KEY FIXING
- NOTE-4: EYE OF THE NEEDLE PRESS-FIT CTS TYPE
- NOTE-5: FLAT ROCK INSERTION TOOLING IN PCB, SEE DRW REF:C-8626-1003
- NOTE-6: METALIZED HOLE DEFINITION,SEE GS-12-447
- NOTE-7: IF SUFFIX "P" IS ADDED IN P/N, PACKAGING IS IN TRAYS, BUT CONNECTOR MARKING IS WITHOUT "P"
ExampLe : HM1FxxxxxxxH6PLF, marking:HM1FxxxxxxxH6LF

GENERAL CHARACTERISTICS AND ROHS INFORMATIONS:
SEE GS-12-447

(REDUCED SCALE SHEET)

rev	ecn no	dr	date
F	-	GRT	2001/08/10
G	LS05-004	MLE	2005/02/17
H	LS06-0095	LGO	2006/06/30
J	LS06-0159	MLE	2006/10/16
K	LS07-0266	MLE	2007/11/06
-	-	-	-
-	-	-	-

www.fciconnect.com		surface ISO 1302	tolerance std ISO 406 ISO 1101	projection	mm
Dr CHAMPION 1991/07/30		TOLERANCES UNLESS OTHERWISE SPECIFIED		size A3	Scale 2
Eng LENOIR 1991/07/30		ANGULAR	0.X ±0.1	ECN LS07-0266	Rev. K
Chr LEGARE 1991/07/30		LINEAR	0.XX ±0.1	Spec ref -	
Appr LEGARE 1991/07/30		0.1M ±2	0.XXX ±0.1		
Product family METRAL		C-8626-0066			
METRAL FEMALE 4 ROWS 96 CTS		CUSTOMER sheet 1 of 1			
RIGHT ANGLE PRESS-FIT/PRESS-IN PEG					
catalog no					

Copyright FCI.

REV F - 2006-04-17