

PRODUCT NUMBER

89898-YXXZHFLF

- WHEN NEEDED, SUFFIX LETTER "LF" INDICATES THE PRODUCT IS RoHS COMPATIBLE, SEE NOTE 6
- OPTION LETTERS, NOTE 1b, OMIT FROM PRODUCT NUMBER IF NOT APPLICABLE
- A - PRODUCT PACKED IN TAPE & REEL, SEE TA856.
- B - PRODUCT WITH PICK UP CAP PACKED IN TUBE.
- NUMBER OF POSITIONS PER ROW: 02 TO 30.
- OVER THAN 30 POSITIONS ON SPECIAL REQUEST.

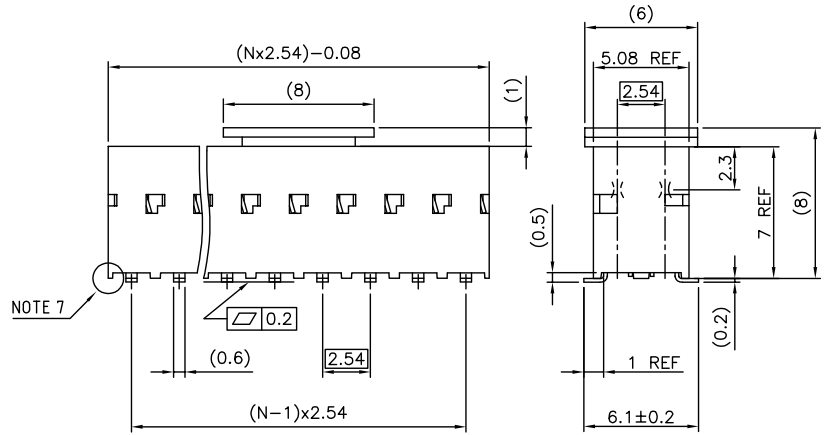
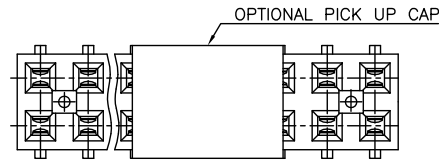
PLATING CODE

- 3= 0.76µm GOLD ON CONTACT AREA.  
3.81µm TIN-LEAD ON TAIL.
- 4= 5µm TIN-LEAD ON CONTACT AREA.  
3.81µm TIN-LEAD ON TAIL.

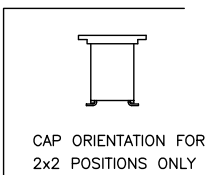
WHEN SUFFIX "LF" IS REQUIRED, 2µm MIN MATTE TIN OVER 1.27 MIN Ni IS SUPPLIED INSTEAD OF SnPb.

NOTES:

- 1a- HOUSING & PICK UP CAP MAT'L: THERMOPLASTIC GLASS FILLED FLAME RETARDANT PER UL 94 V-0 COLOR: GREY.
- b- HIGH TEMPERATURE PLASTIC 30% GLASS REINFORCED NON HALOGEN FLAME RETARDED MOLDING COMPOUND COLOR BLACK.
- 2 - TERMINAL MATERIAL: PHOSPHOR BRONZE.
- 3 - PACKAGING:  
2 UP TO 4 POSITIONS PRODUCT PACKED IN PLASTIC BOX.  
5 UP TO 30 POSITIONS PRODUCT PACKED IN TUBE.  
WHOLE 89898-304B PACKED IN TUBE.
- 4 - TO DETERMINE DIMENSIONS:  
N = NUMBER OF POSITIONS PER ROW  
EXAMPLE: 8 POS: (Nx2.54)-0.08=20.24 mm.
- 5 - RECOMMENDED IR PROFILE PER TA842.
- 6 - RoHS COMPATIBLE PRODUCT SPECIFICATIONS
  - a - PLATING:  
- "LF" MEANS THE PRODUCT IS LEAD-FREE, 2µm MINIMUM MATTE TIN OVER 1.27µm MINIMUM NICKEL UNDERPLATE.
  - b - MANUFACTURING PROCESS COMPATIBILITY  
- THE HOUSING WILL WITHSTAND EXPOSURE TO 260°C PEAK TEMPERATURE FOR 30 SECONDS MAX IN A CONVECTION, INFRA-RED OR VAPOR PHASE OR REFLOW OVEN.
- c - LABELING:  
- MEETS PACKAGING SPECS AS PER GS-14-920
- d - LEGAL STATEMENT: SEE GS-22-008
- 7 - END STAND-OFFS FOR 2x2 UP TO 2X5 POS  
NO END STAND-OFFS FOR 2x6 UP TO 2x50 POS



NOTE 7



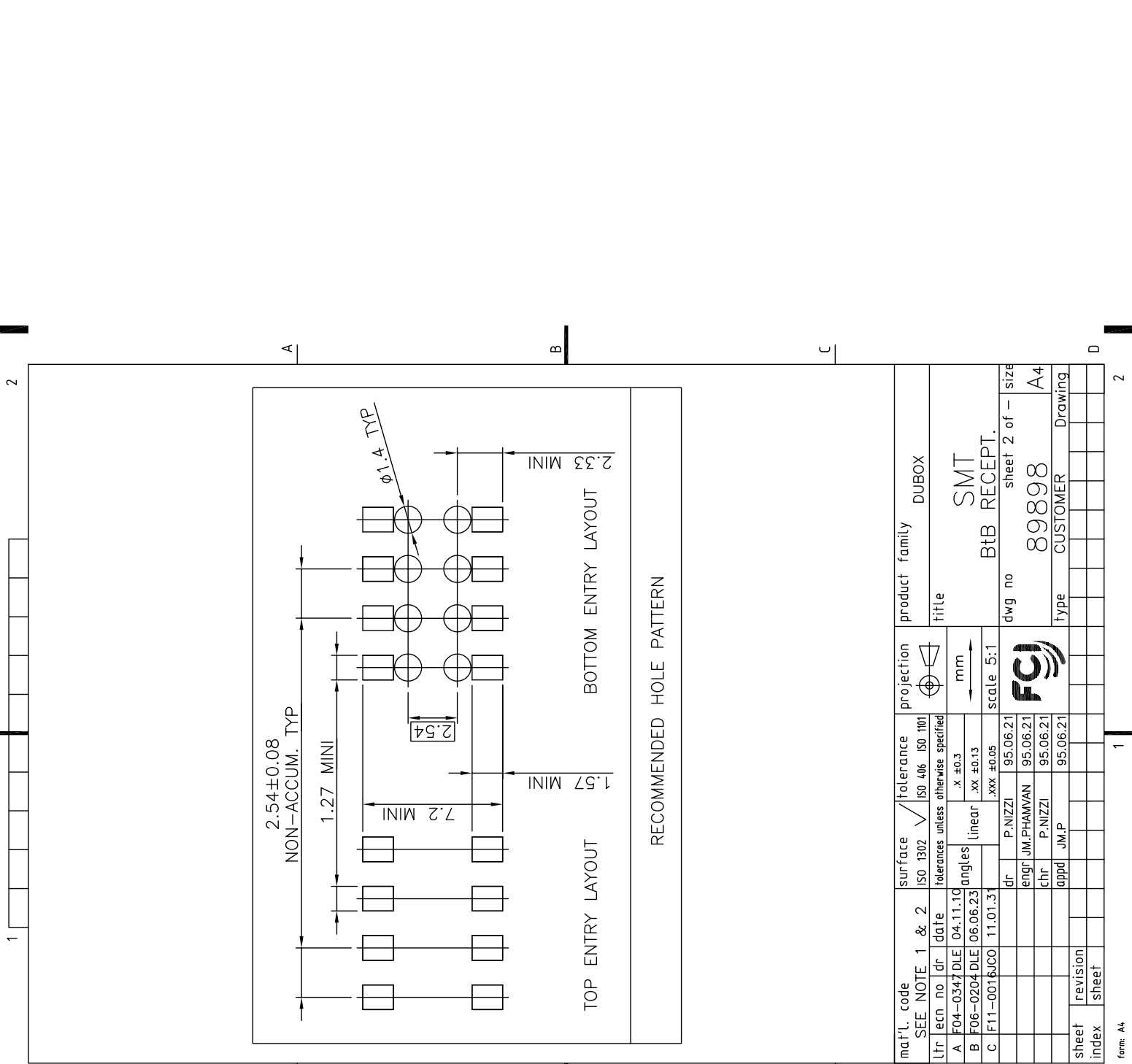
CAP ORIENTATION FOR 2x2 POSITIONS ONLY

mat'l. code		surface		tolerance		projection		product family	
SEE NOTE 1 & 2		ISO 1302		ISO 406 ISO 1101				DUBOX	
Ltr	ecr no	dr	date	tolerances unless otherwise specified				title	
W	F04-0347	DLE	04.11.10	angles	linear	mm		SMT	
X	F05-0125	DLE	05.02.07					BtB RECEPT.	
Y	F06-0137	DLE	06.02.27			scale 5:1		dwg no	
AA	F06-0204	DLE	06.06.23	dr	P.NIZZI	95.06.21		sheet 1 of 2	
AB	F09-0211	JCO	09.10.27	engr	J.M.PHAMVAN	95.06.21		size	
AC	F11-0016	JCO	11.01.31	chr	P.NIZZI	95.06.21		A3	
AD	F11-0043	JCO	12.02.22	appd	J.M.P	95.06.21		89898	
sheet	revision	AD	C					type	
index	sheet	1	2					CUSTOMER Drawing	

PDM: Rev:AD

STATUS:Released

Printed: Mar 20, 2012



mat'l. code	SEE NOTE 1 & 2	surface	ISO 1302	tolerance	ISO 406 ISO 1001	projection	product family	DUBOX
lfr	ecn no	dr	date	tolerances unless otherwise specified			title	SMT
A	F04-0347	DLE	04.11.10	linear	.x ±0.3	mm		BtB RECEPT.
B	F06-0204	DLE	06.06.23	angles	.xx ±0.13	scale 5:1	dwg no	89898
C	F11-0016	JUCO	11.01.31		.xxx ±0.05		sheet 2 of -	A4
		dr	P.NIZZI				type	CUSTOMER
		engr	JM.PHAMVAN					Drawing
		chr	P.NIZZI					
		appd	JM.P					
Sheet	revision							
Index	sheet							