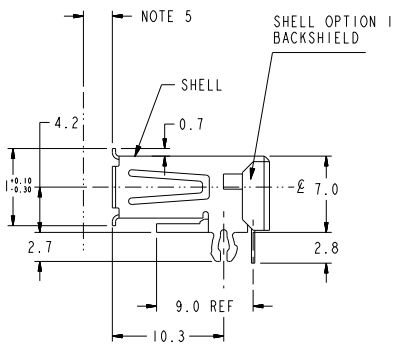
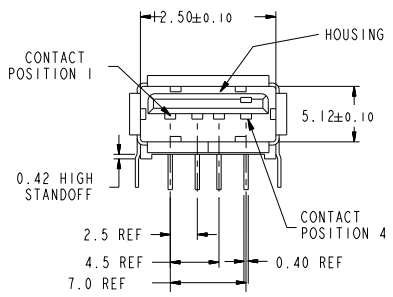
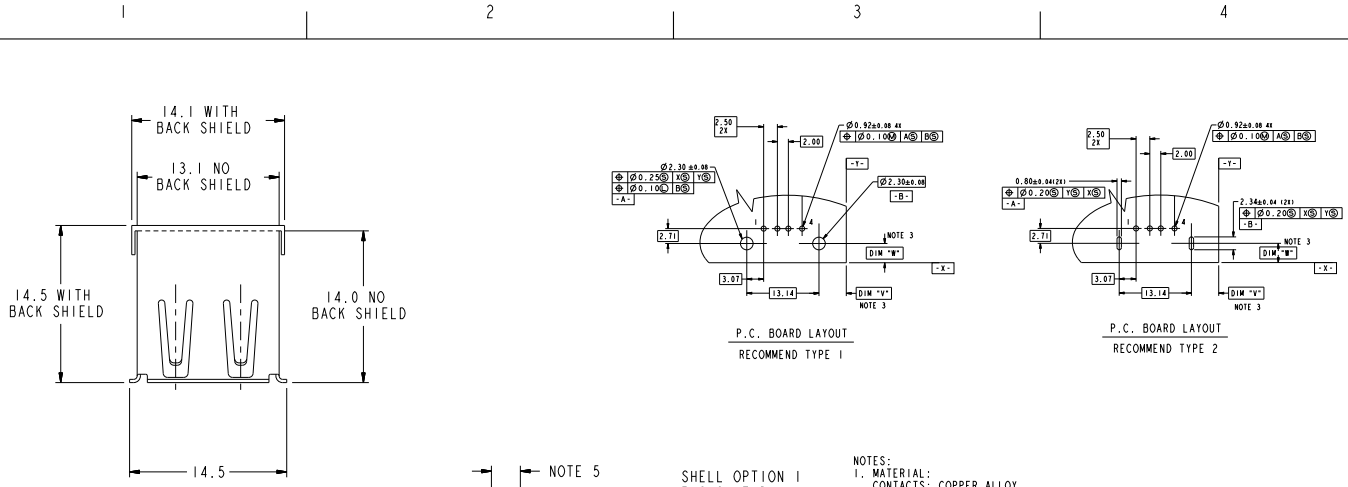




Copyright FCI.



- NOTES:
1. MATERIAL:
CONTACTS: COPPER ALLOY
SHELL: COPPER ALLOY
HOUSING: UL 94V-0 RATED THERMOPLASTIC;
 2. PLATING:
CONTACTS: SEE PRODUCT NUMBER CODE
SHELL: SEE PRODUCT NUMBER CODE;
 3. DATUM AND BASIC DIMENSIONS ESTABLISHED BY CUSTOMER;
 4. RECOMMENDED PC BOARD THICKNESS OF 1.57mm (EXCEPT STYLE 5 1.20mm)
 5. 2.67mm MAXIMUM PANEL THICKNESS IF MOUNTED BEHIND PANEL;
 6. CONTACT PLATING CODE OPTION 1 DOES NOT MEET THE PLATING SPECIFIED PER UNIVERSAL SERIAL BUS SPECIFICATION REVISION 1.0;
 7. PRODUCT SPEC GS-12-095 & PACKAGING SPEC GS-14-393;
 8. COMPLIED WITH USB 2.0 & TID NUMBER 6000204;
 9. 87520-1010XX, -1012XX, 3010XX, -3012XX, -5010XX, -6010XX AND -7010XXLF DURABILITY MET 5000 CYCLES THE OTHER DASH NUMBER MEET USB 2.0 DURABILITY 1500 CYCLES;
 10. PACKING STANDARD GS-14-920, WILL BE APPLIED FOR LEAD FREE P/N'S;
 11. FOR LEAD FREE P/N, THE PRODUCT MEET EUROPEAN UNION DIRECTIVES AND OTHER COUNTRY REGULATION AS DESCRIBED IN GS-22-008;
 12. THE HOUSING WILL WITHSTAND EXPOSURE TO 260°C PEAK TEMPERATURE FOR 40 SECONDS IN A CONVECTION, INFRO-RED OR VAPOR PHASE REFLOW OVEN;
 13. 87520-1010XXLF/-3010XXLF/-5010XXLF CAN WITHSTAND 2Amps CURRENT EITHER PARALLEL OR SERIALS (TESTING PLUG WITH 20 AWG WIRE);
 14. THE PRODUCT CAN BE USED FOR PIP PROCESS.

spec ref	dr Keen Wu 2010/11/03			projection	MM	size A4	scale 4.000
tolerance std	eng Andy Zhang 2011/11/04					ecn no ELX-N-007761-1	rel level Released
TOLERANCES UNLESS OTHERWISE SPECIFIED			chr -				
surface ✓	linear	0.X	±0.3		title USB RECEPTACLE USB	dwg no 87520	rev AL
		0.XX	±0.2				
		0.XXX	±				
	angular	0°	±3°	www.fci.com	cat. no.	Product - Customer Drw	sheet 1 of 3

PAGE FILE - REV C - 2010-06-09

PRODUCT NUMBER CODE

87520- X X X X X P X LF

BASE PRODUCT NUMBER

HOUSING COLOR AND SHELL PLATING OPTIONS

- 0 - WHITE+SHELL TIN & NICKEL PLATING
- 1 - BLACK+SHELL TIN & NICKEL PLATING
- 2 - WHITE+SHELL NICKEL PLATING ONLY
- 3 - BLACK+SHELL NICKEL PLATING ONLY
- 4 - WHITE FR50 + SHELL TIN & NICKEL PLATING FOR NON LEAD FREE P/P'S
CHANGE WHITE FR50 TO WHITE PA46 FOR LEAD FREE P/P'S
- 5 - BLACK NYLON 66 + SHELL TIN & NICKEL PLATING FOR NON LEAD FREE P/P'S
CHANGE BLACK NYLON 66 TO BLACK PA46 FOR LEAD FREE P/P'S
- 6 - WHITE FR50+SHELL TIN & NICKEL PLATING FOR NON LEAD FREE P/P'S
CHANGE WHITE FR50 TO WHITE PA46 FOR LEAD FREE P/P'S
- 7 - WHITE PA46+SHELL TIN & NICKEL PLATING

SHELL TYPE OPTION

- 0 - NO BACK SHIELD, SEE STYLE 1 FOR DURABILITY 1500 CYCLES
SEE STYLE 4 FOR DURABILITY 5000 CYCLES
- 1 - BACK SHIELD, SEE STYLE 2
- 2 - PARTIAL BACK SHIELD, SEE STYLE 3
- 5 - NO BACK SHIELD, SEE STYLE 4 WITH HIGH PERFORMANCE MATERIAL
FOR DURABILITY 12,000 CYCLES, NI PLATING ONLY

MOUNTING HOLE OPTIONS

- 1 - NONE

TERMINAL PLATING OPTION

- 0 - 1.25um Ni UNDERPLATE
0.76um GXT CONTACT AREA
2.50um MATTIE TIN TAIL AREA FOR P/P'S
- 2 - 1.25um Ni UNDERPLATE
0.76um /30u" GXT CONTACT AREA
2.50um MATTIE TIN TAIL AREA FOR P/P'S

PACKAGING OPTIONS

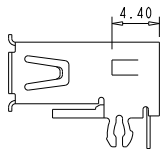
- A - TAPE AND REEL
- B - TUBES

DATE CODE

- SPECIAL OPTION:
- S: PANASONIC ONLY
- B: FOR 1.20mm THICKNESS PCB

LEAD FREE OPTION

P/P'S WITH SUFFIX "LF" MEAN LEAD FREE PRODUCT
FOR LEAD FREE P/P, CHANGE ALL ORIGINAL TIN/LEAD PLATING TO PURE TIN PLATING

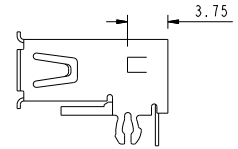


STYLE 4 WITHOUT BACK SHELL

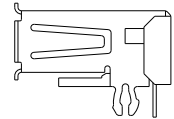
- FOR 87520-1010XXLF
- 1012XXLF
 - 3010XXLF
 - 3012XXLF
 - 5012XXLF
 - 6010XXLF
 - 7010XXSLF
 - 3S10XPLF
 - 3S12XPLF

AVAILABLE PART NUMBER LIST

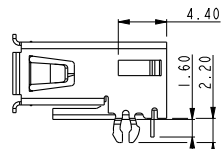
- 87520-0010XXLF
- 87520-0012XXLF
- 87520-0210XXLF
- 87520-1010XXLF
- 87520-1012XXLF
- 87520-0110XXLF
- 87520-0112XXLF
- 87520-1110XXLF
- 87520-2010XXLF
- 87520-2012XXLF
- 87520-2110XXLF
- 87520-2112XXLF
- 87520-2210XXLF
- 87520-3010XXLF
- 87520-3012XXLF
- 87520-3110XXLF
- 87520-3112XXLF
- 87520-4010XXLF
- 87520-4110XXLF
- 87520-5010XXLF/5010XXSLF
- 87520-5110XXLF
- 87520-6010XXLF
- 87520-7010XXSLF
- 87520-3010APBLF
- 87520-3S10XPLF
- 87520-3S12XPLF
- 87520-3S10XPBLF
- 87520-3S12XPBLF



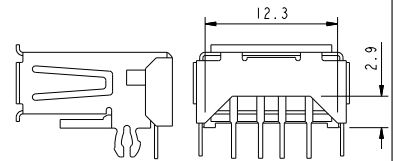
STYLE 1 WITHOUT BACK SHELL



STYLE 2 WITH BACK SHELL



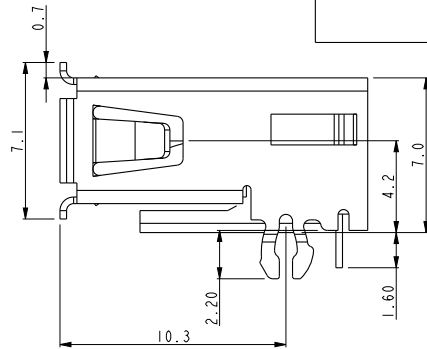
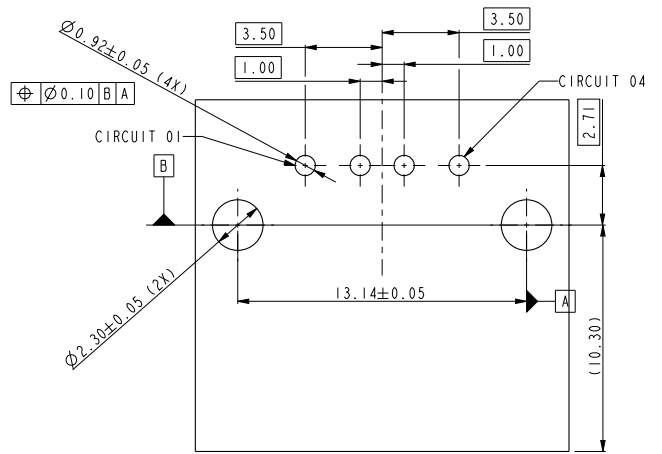
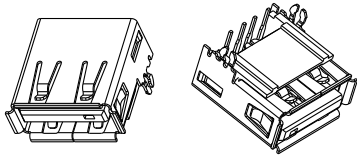
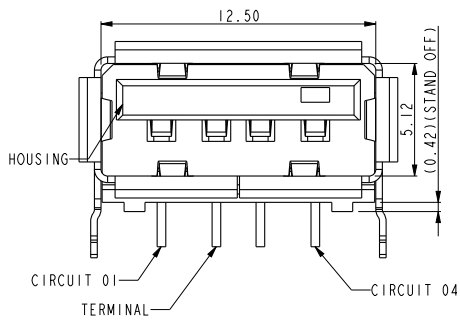
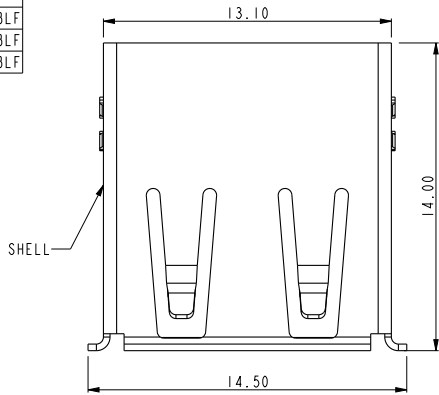
STYLE 5 WITHOUT BACK SHELL
FOR 1.20mm THICKNESS PCB
87520-3X10APBLF



STYLE 3 WITH PARTIAL BACK SHELL

dr	Keen Wu	2010/11/03	projection	MM	size	A4	scale	4.000
eng	Andy Zhang	2011/11/04			ecn no	ELX-N-007761-1		
chr	-	-	product family	← →	rel level	Released		
appr	Rick Bian	2011/11/04			title	USB RECEPTACLE		rev
www.fci.com			cat. no.	Product - Customer	dwg no	87520		sheet 2 of 3

PART NUMBER
87520-3010APBLF
87520-3S10XPBLF
87520-3S12XPBLF



RECOMMENDED PCB LAYOUT
COMPONENT SIDE

dr	Keen Wu	2010/1/03	projection	MM	size	A4	scale	4.000
eng	Andy Zhang	2011/1/04			ecn no ELX-N-007761-1			
chr	-	-			rel level Released			
appr	Rick Bian	2011/1/04	product family		rev AL			
			title			dwg no		rev
www.fci.com			USB RECEPTACLE			87520		AL
cat. no.			Product - Customer Drw			sheet 3 of 3		

PAGE FILE - REV C - 2010-08-09

PDS: Rev :AL

STATUS:Released

Printed: Nov 04, 2011

Copyright FCI.