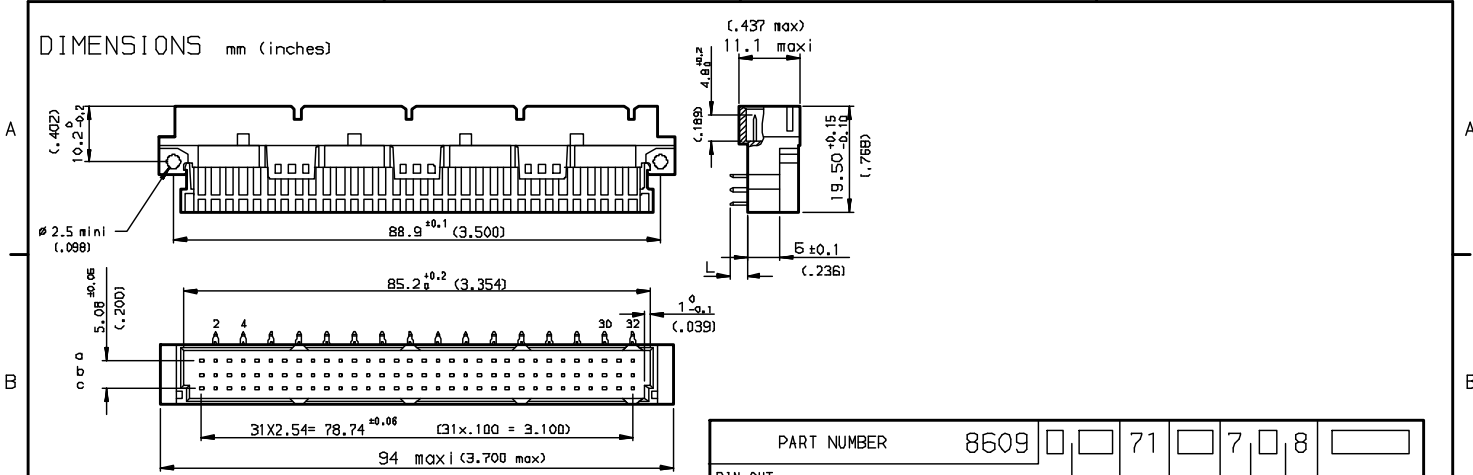


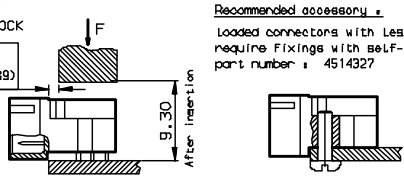
DIMENSIONS mm (inches)



PART NUMBER	8609	71	7	8
PIN OUT				
pins a-b-c		3	48	
pins a-c		4	32	
NUMBER OF CONTACTS				
TERMINATION	L = 2.80 ±0.20 (.110) --- short post --- 94			
PERFORMANCE CLASS				
DIN 41612 class 3	---			
DIN 41612 class 2	---			
DIN 41612 class 1	---			
TERMINATION TYPE	---			
EN LEAD	---			
LEAD FREE	---			

METHOD OF INSERTION ON THE PCB = FLAT ROCK

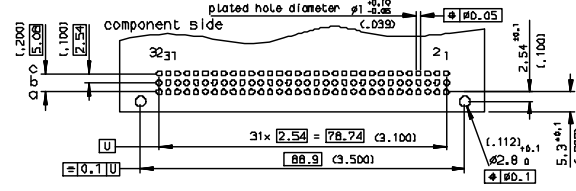
ATTENTION
Minimum gap: 1mm (.039)



Recommended accessory :
loaded connectors with less than 54 cts require fixings with self-winding screws part number : 4514327

GENERAL CHARACTERISTICS AND ROHS INFORMATIONS:
SEE DRAWING C-8609-0000C

PCB DRILLING



www.fciconnect.com		surface 190 1302	tolerance std ISO 406 ISO 1101	projection	mm
		TOLERANCES UNLESS OTHERWISE SPECIFIED			
Dr	ROVILLARD	1997/10/28	ANGULAR	size A3	Scale 1.5
Eng	TARON	1997/10/28	LINEAR	ECN	LS06-0095
Chr	LEGARE	1997/10/28	LINEAR	Product family	DIN 8609
Appr	LEGARE	1997/10/28	LINEAR	Spec ref	-
FCi		RIGHT ANGLE MALE - STYLE C		Rev. E	
title		PRESS FIT		C-8609-0632	
catalog no		-		CUSTOMER sheet 1 of 1	

Copyright FCI