

PRODUCT NUMBER  
71991-YXXXLF

- WHEN NEEDED, SUFFIX LETTER "LF" INDICATES THE PRODUCT IS RoHS COMPATIBLE, SEE NOTE 6.
- OPTIONAL LETTER
- H: HIGH TEMPERATURE PRODUCT.
- NUMBER OF POSITIONS PER ROW: 02 TO 50.
- PLATING CODE
- 3= 0.76µm GOLD ON CONTACT AREA.  
3.81µm TIN-LEAD ON TAIL.
- 4= 5µm TIN-LEAD ON CONTACT AREA.  
3.81µm TIN-LEAD ON TAIL.
- 8= 0.38µm GOLD ON CONTACT AREA.  
3.81µm TIN-LEAD ON TAIL.

WHEN SUFFIX "LF" IS REQUIRED, 2µm MIN MATTE TIN OVER 1.27 MIN Ni IS SUPPLIED INSTEAD OF SnPb.

NOTES:

- 1 - HOUSING MAT'L: THERMOPLASTIC GLASS FILLED FLAME RETARDANT PER UL 94 V-0  
LOW TEMPERATURE: COLOR BLUE  
HIGH TEMPERATURE: COLOR GREY.
- 2 - TERMINAL MATERIAL: PHOSPHOR BRONZE.
- 3 - 2 UP TO 50 POSITIONS PRODUCT PACKED IN TUBE.
- 4 - TO DETERMINE DIMENSIONS:  
N = NUMBER OF POSITIONS PER ROW  
EXAMPLE: 8 POS: (Nx2.54)-0.08=20.24 mm
- 5 - RECOMMENDED IR PROFIL PER TA 842.
- 6 - RoHS COMPATIBLE PRODUCT SPECIFICATIONS

a - PLATING:

- "LF" MEANS THE PRODUCT IS LEAD-FREE, 2µm MINIMUM MATTE TIN OVER 1.27µm MINIMUM NICKEL UNDERPLATE.

b - MANUFACTURING PROCESS COMPATIBILITY

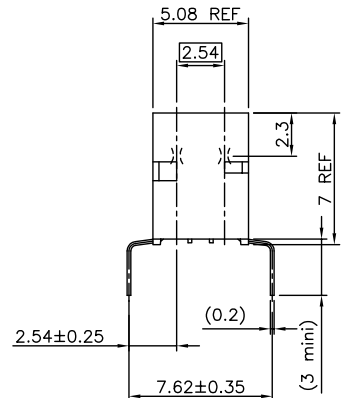
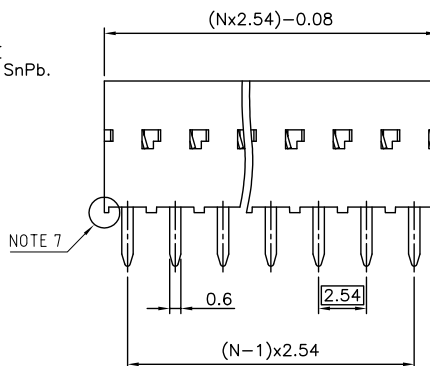
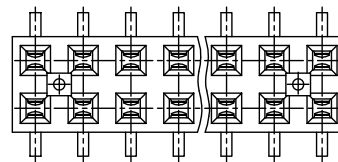
- THE HOUSING WILL WITHSTAND EXPOSURE TO 260°C ±5°C SOLDER BATH TEMPERATURE FOR 5 SECONDS IN A WAVE SOLDER APPLICATION WITH A 1.6mm MIN THICK CIRCUIT BOARD.

c - LABELING:

- MEETS PACKAGING SPECS AS PER GS-14-920

d - LEGAL STATEMENT: SEE GS-22-008

- 7 - END STAND-OFFS FOR 2x2 UP TO 2x5 POS  
NO END STAND-OFFS FOR 2x6 UP TO 2x50 POS

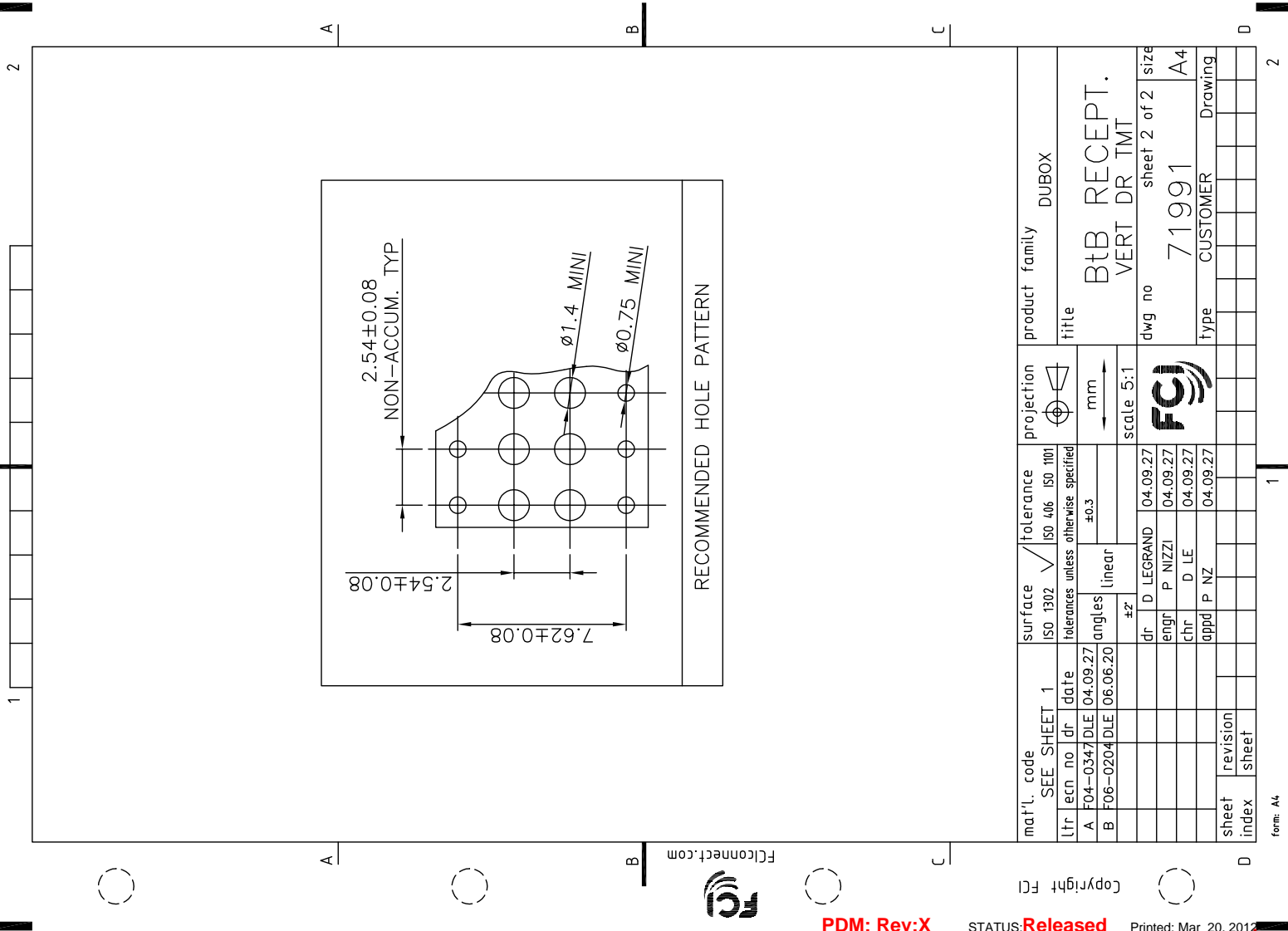


mat'l. code		surface		tolerance		projection		product family	
SEE NOTES		ISO 1302		ISO 406 ISO 1101		mm		DUBOX	
Ltr	ecm no	dr	date	tolerances unless otherwise specified		mm		title	
R	F10132	DLE	01.02.06	angles	linear	mm		BtB RECEPT.	
S	F04.0347	DLE	04.09.27	±z		scale 5:1		VERT DR TMT	
T	F06-0137	DLE	06.02.27	±z				dwg no	
U	F06-0204	DLE	06.06.20	dr	D LEGRAND	04.09.27	sheet 1 of 2		size
V	F06-0323	DLE	06.11.21	engr	P NIZZI	04.09.27	FCJ		A3
W	F09-0011	LMU	09.02.16	chr	D LEGRAND	04.09.27	71991		
X	F11-0043	JCO	12.02.22	appd	P NZ	04.09.27	type		Drawing
sheet	revision	X	B						
index	sheet	1	2						

PDM: Rev:X

STATUS:Released

Printed: Mar 20, 2012



1

2

A

B

B

C

C

D

D

1

2

Form: A4

Copyright FCI

Fconnect.com



PDM: Rev:X

STATUS:Released

Printed: Mar 20, 2012

mat'l. code	SEE SHEET 1	surface	ISO 1302	tolerance	ISO 406 ISO 1001	projection	product family	DUBOX
ltr	ecn no	dr	date	tolerances unless otherwise specified		mm	title	BtB RECEPT. VERT DR TMT
A	F04-0347	DLE	04.09.27	angles	linear	scale 5:1	dwg no	71991
B	F06-0204	DLE	06.06.20	±0.3	±2	FCI	sheet 2 of 2	A4
		dr	D LEGRAND	04.09.27			type	CUSTOMER
		engr	P NIZZI	04.09.27				Drawing
		chr	D LE	04.09.27				
		appd	P NZ	04.09.27				
Sheet	revision							
index	sheet							