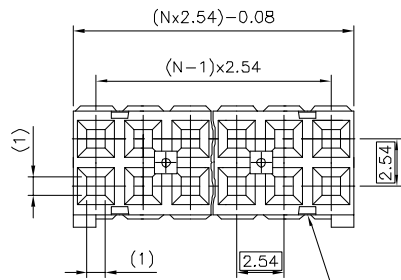
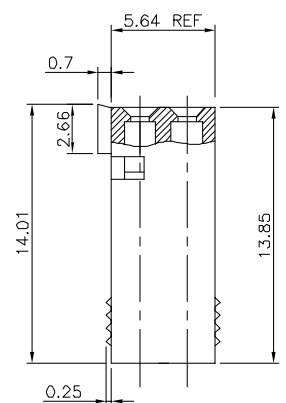
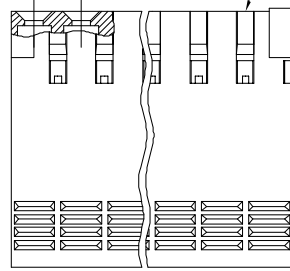


PRODUCT NUMBER
65239-0XXLF

- WHEN NEEDED, SUFFIX LETTER "LF" INDICATES THE PRODUCT IS RoHS COMPLIANT, SEE NOTE 6
- NUMBER OF CAVITIES PER ROW : 02 TO 36.
- PLASTIC MATERIAL.



SEE NOTE 2



NOTES:

- 1 - HOUSING MAT'L: THERMOPLASTIC GLASS FILLED FLAME RETARDANT PER UL 94 V-0 COLOR: BLUE.
- 2 - OVER DASH -007 ONLY FIRST AND LAST THREE POSITIONS MUST HAVE GROOVES ON TWO SIDES.
- 3 - PRODUCT PACKED IN PLASTIC BAG.
- 4 - TO DETERMINE DIMENSIONS:
N = NUMBER OF POSITIONS
EXAMPLE: 8 POS: (Nx2.54)-0.08=20.24 mm.
- 5 - FOR TECHNICAL APPLICATION SEE TA317.
- 6 - RoHS COMPATIBLE PRODUCT SPECIFICATIONS

- a - LABELING:
— MEETS PACKAGING SPECS AS PER GS-14-920
- b - LEGAL STATEMENT: SEE GS-22-008

THE PRODUCT IS NOT INTENDED TO BE EXPOSED TO A MANUFACTURING SOLDER PROCESS.

mat'l. code		surface		tolerance		projection		product family	
SEE NOTE		ISO 1982		ISO 406 ISO 111		1:1		DUBOX	
lfr	ecn no	dr	date	tolerances unless otherwise specified		mm		title	
M	F05-0236	DLE	05.08.24	angles	±0.3	mm		CtW HOUSING DR	
N	F05-0286	DLE	05.11.07	linear		scale 5:1		dwg no	
P	F06-0148	DLE	06.03.10	±2°				sheet 1 of 1	
R	F06-0225	DLE	06.07.07	dr	L.MULIN	00.08.30		size	
K	F04-0347	DLE	04.12.10	engr	P.NIZZI	00.08.30		65239 A3	
L	F05-0169	DLE	05.04.07	chr	JF.NOTTEAU	00.08.30		type	
				appr	P.NZ	00.08.30		CUSTOMER Drawing	
sheet index	revision sheet								