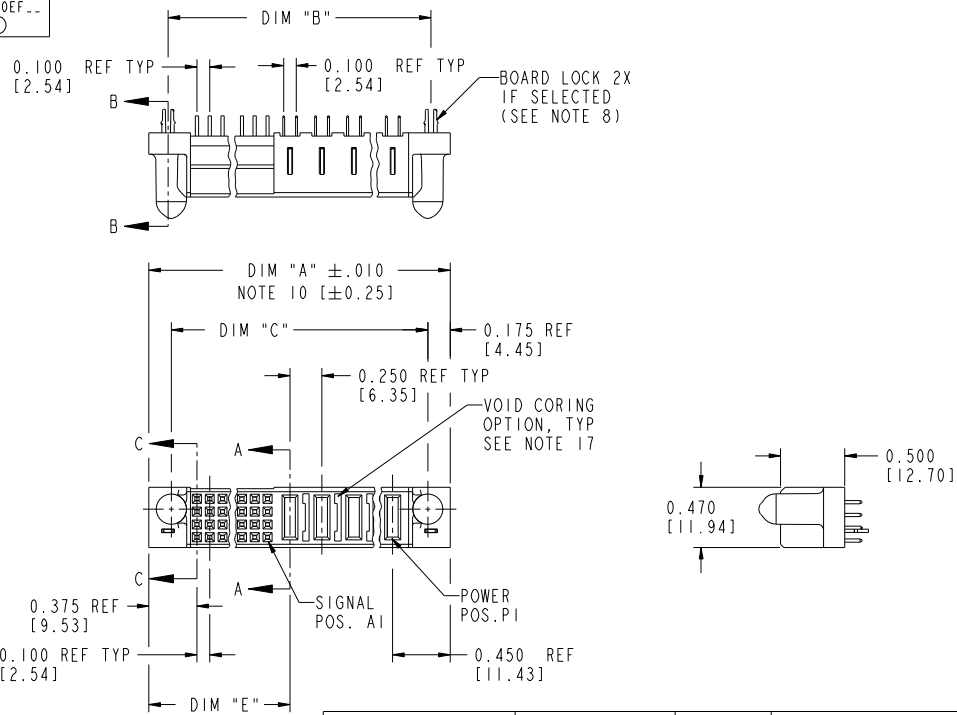


Tous droits strictement réservés. Reproduction ou communication à des tiers interdite sans autorisation écrite du propriétaire. Property of FCI. Droits de reproduction FCI.



All rights strictly reserved. Reproduction or issue to third parties in any form without written authority from the proprietor. Property of FCI. Copyright FCI.

PRODUCT NUMBER
51742-ABBCC00EF...
NOTE: ①



mat'l code				SEE NOTE 2		tolerances unless otherwise specified		CUSTOMER		FCI	
thr	con no.	dr	date	linear	projection	linear	projection	COPY	title	www.fciconnect.com	
H	DG05-0132	SJ	06/02/05	linear	projection	.XX±.01/0.X±0.3	projection		VERTICAL RECEPTACLE W/GUIDE PIN		
J	DG05-0153	SJ	06/10/05	linear	projection	.XXX±.005/0.XX±0.13	projection		POWER / SIGNAL		
K	DG06-0362	JULIA	08/30/06	angles	projection	.XXX±.0020/.XXX±.051	projection				
L	DG08-0239	JC	09/11/08	dr	projection	D. EATON 05-25-99	projection		product family	PWRBLADE	code
				engr	projection	J. BROWN 05-24-99	projection		size		213
				chr	projection	J. BROWN 05-26-99	projection		dwg no	51742	sheet
				appd	projection	J. BROWN 05-26-99	projection		scale	1:1	1 of 3
sheet index	revision sheet	L	L	L	L	L	L	L	L	L	L
1	2	3									

Pro/E

code code 22526

PDM: Rev:L

STATUS:Released

Printed: Dec 20, 2010

Tous droits strictement réservés. Reproduction ou communication à des tiers interdite sans autorisation écrite du propriétaire. Property of FCI. Droits de reproduction FCI.



All rights strictly reserved. Reproduction or issue to third parties in any form without written authority from the proprietor. Property of FCI. Copyright FCI.

PRODUCT NUMBER
51742-ABBCC00EF...
NOTE: ①

1 | 2

3 |

4

DIM	LENGTH FORMULAS (SEE NOTE 10)
DIM "A"	.100 [2.54] x (CCC/4) + .250 [6.35] x BB + .650 [16.51] (NOTE 10)
DIM "B"	.100 [2.54] x (CCC/4) + .250 [6.35] x BB + .350 [8.89]
DIM "C"	.100 [2.54] x (CCC/4) + .250 [6.35] x BB + .300 [7.62]
DIM "E"	.100 [2.54] x (CCC/4) + .450 [11.43]
DIM "F"	.100 [2.54] x (CCC/4) + .250 [6.35] x BB + .680 [17.27]
DIM "H"	.100 [2.54] x (CCC/4) + .250 [6.35]

CONNECTOR NOTES

- PRODUCT NUMBER CODE:
51742 - A BB CCC 00 E F LF
NO THIS SUFFIX: 100u"/2.54um SnPb ON PCB INTERFACE
ADD THIS SUFFIX: 78u"/2.00um Sn ON PCB INTERFACE
RETENTION TO PCB (NOTE 8)
TAIL OPTIONS (NOTE 7)
ALWAYS "00" (ZERO, ZERO) (NOTE 6)
NUMBER OF SIGNAL CONTACTS (NOTE 5)
NUMBER OF RIGHT POWER CONTACTS (NOTE 4)
PLATING (NOTE 3)
BASE NUMBER
- HOUSING MATERIAL: GLASS FILLED V-O HIGH TEMP THERMO PLASTIC.
SIGNAL CONTACT MATERIAL: COPPER ALLOY
POWER CONTACT MATERIAL: COPPER ALLOY
- PLATING OPTION:
SEE PRINT 10064183 FOR PLATING SPEC OF 51742-1BBCC00EF; 51742-1BBCC00EFLF
- RIGHT END POWER CONTACT, 01 TO 20 AVAILABLE.
MAXIMUM OF 20 POWER CONTACTS PER CONNECTOR.
- SIGNAL CONTACTS, 004 TO 148 AVAILABLE.
- THIS PART NOT AVAILABLE WITH LEFT SIDE POWER CONTACTS.
- TAIL OPTIONS:
A = .135 ± .010 [3.43 ± .25] SOLDER TO BOARD
C = .135 ± .010 [3.43 ± .25] PRESS FIT

- RETENTION TO PCB OPTIONS:
A = BOARD LOCK (REQUIRES .098 + .002, -.001 [2.49 + 0.05, -0.03] THRU HOLE IN PCB) (NOT AVAILABLE WITH PRESS FIT).
BOARD LOCK TO BE USED IN CONJUNCTION WITH AN .092 PCB OR THICKER.
C = NO RETENTION FEATURE (ALL PRESS FIT).
 - MANUFACTURE'S NAME, P/N, AND DATE CODE TO APPEAR ON THIS SURFACE.
 - THE MAXIMUM OVERALL LENGTH (DIM A) OF A PART IS 8.00 [203.2].
 - PRODUCT SPECIFICATION GS-12-149.
 - REFERENCE 51698 FOR SPECIALS WORKSHEET.
- PCB NOTES:
- ALL DIMENSIONS ARE BASIC UNLESS OTHERWISE SPECIFIED.
 - ALL THROUGH HOLES ARE LOCATED WITH A TRUE POSITION OF .004 [0.01]
 - ALL HOLE DIAMETERS ARE FINISHED HOLE SIZE.
 - 0.0453 ± .001 [1.151 ± .02] DRILLED HOLES PLATED WITH 0.0003 [0.007] MIN SnPb OVER 0.001 [0.03] TO .003 [0.08] PLATING TO ACHIEVE A .040 ± .003 [1.02 ± .08] HOLE.
 - THE VOID CORING IN BETWEEN POWER MODULES, SIGNAL MODULES AND END MODULES ARE OPTIONAL AND THE SHAPE MAY BE DIFFERENT FOR OPTIMIZING THE MOLDING PROCESS. THE VOID CORING WILL NOT EFFECT TO PRODUCT FUNCTION.
 - A Δ SYMBOL WILL BE NEXT TO ANY DIMENSION, VIEW, OR NOTE WHICH HAS BEEN MODIFIED WITH THE CURRENT DRAWING REVISION.

SEE NOTE 2				CUSTOMER		FCI	
lfr	ecn no.	dr	date	linear	projection	title	www.fciconnect.com
				.XX±.01/0.X±.0.3		VERTICAL RECEPTACLE W/GUIDE PIN POWER / SIGNAL	
				.XXX±.005/0.XX±0.13			
				.XXXX±.0020/ .XXX±.051			
				angles			
				0° ± 2°			
				dr	D. EATON 05-25-99	product family	PWRBLADE
				engr	J. BROWN 05-24-99	size	dwg no
				chr	J. BROWN 05-26-99	scale	1:1
				appd	J. BROWN 05-26-99	code	51742
sheet index	revision sheet					213	sheet
						2 of 3	

1 | 2

3 |

4

Pro/E

cage code 22526

PDM: Rev:L

STATUS:Released

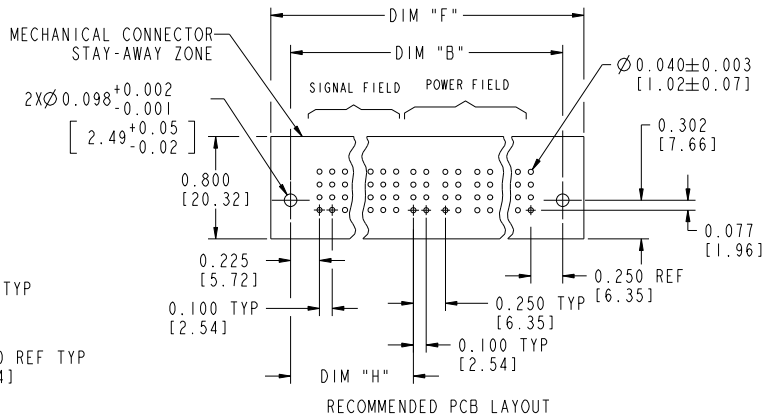
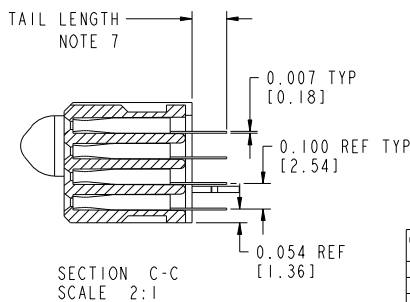
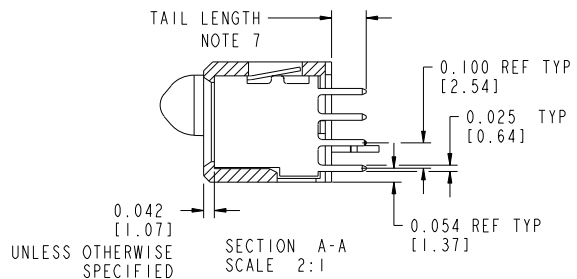
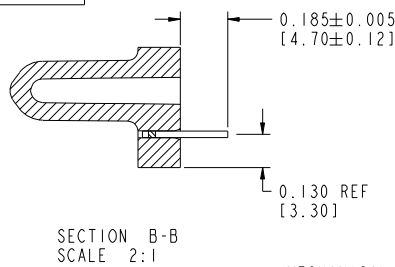
Printed: Dec 20, 2010

Tous droits strictement réservés. Reproduction ou communication à des tiers interdite sans autorisation écrite du propriétaire. Property of FCI. Droits de reproduction FCI.



All rights strictly reserved. Reproduction or issue to third parties in any form without written authority from the proprietor. Property of FCI. Copyright FCI.

PRODUCT NUMBER
51742-ABBCC00EF...
NOTE: ①



mat'l code				SEE NOTE 2		tolerances unless otherwise specified		CUSTOMER		FCI	
lfr	ecr no.	dr	date	linear	angular	linear	angular	COPY	projection	title	www.fciconnect.com
						.XX±.01/0.XX±0.3				VERTICAL RECEPTACLE W/GUIDE PIN	
						.XXX±.005/0.XX±0.13				POWER / SIGNAL	
						.XXXX±.0020/.XXX±.051					
						Ø ±.2°					
						dr D. EATON 05-25-99				product family	PWRBLADE
						engr J. BROWN 05-24-99				size	213
						chr J. BROWN 05-26-99				dwg no	51742
						appd J. BROWN 05-26-99				scale	3 of 3
sheet index	revision sheet										

Pro/E

code code 22526

PDM: Rev:L

STATUS:Released

Printed: Dec 20, 2010