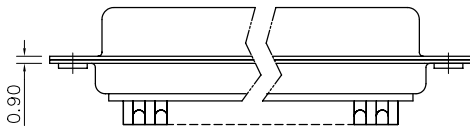
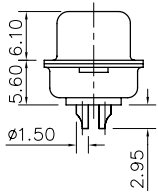
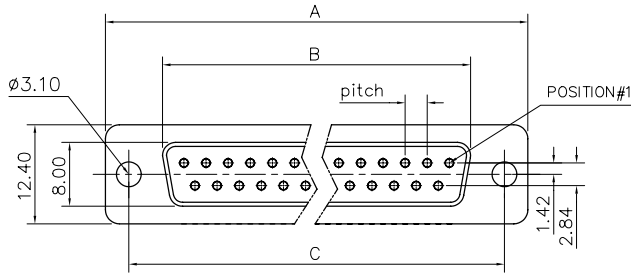


This document is the property of Amphenol Corporation and is delivered on the express condition that it is not to be disclosed, reproduced or used, in whole or in part, for manufacture or sale by anyone other than Amphenol Corporation without the prior consent, & that no right is granted to disclose or to use any information in this document.



# Customer drawing

| DIM.S | A     | B     | C     | Pitch |
|-------|-------|-------|-------|-------|
| 9     | 30.70 | 16.40 | 25.00 | 2.74  |
| 15    | 39.00 | 24.80 | 33.30 | 2.74  |
| 25    | 52.90 | 38.50 | 47.00 | 2.77  |
| 37    | 69.20 | 54.90 | 63.50 | 2.77  |

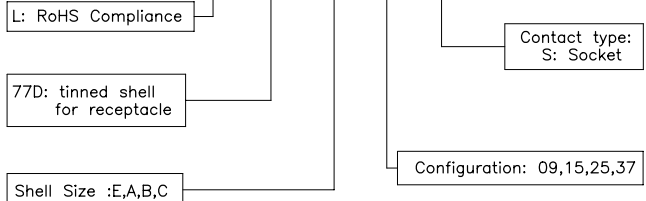
| REVISIONS |     |             |          |          |
|-----------|-----|-------------|----------|----------|
| SYM       | ECN | DESCRIPTION | DATE     | APPROVED |
| 1         |     |             | 03/10/08 |          |

### D-SUB TECHNICAL DATA

SHELL : Steel 2.5um(100u") min tin over 1.25um(50u") min nickel  
 BODY : Glass filled thermoplastic.  
 Flame retardant to UL94 V-0 Color Black  
 CONTACTS : Brass  
 0.1um(4u") min gold over 1.25um(50u") min nickel  
 ELECTRICAL : Voltage rating :300 V RMS at 50 Hz  
 Current rating 7.5A.  
 Insulation resistance >5000 M Ohms  
 Contact resistance 20 mOhms max.  
 CLIMATIC : Temperature range -55 °C up to 85°C  
 Damp heat 21 days(40 °C-95% HR)  
 MARKING : Amphenol...(Series No.)  
 Commercial reference  
 Manufacturing date

### PRODUCT CODE

**L 77D X XX S**



| UNLESS OTHERWISE SPECIFIED TOLERANCES |     | APPROVAL            |      | DATE                         |
|---------------------------------------|-----|---------------------|------|------------------------------|
| .X                                    | +/- | U.S.                | 0.50 | DRAWN christina.cui/01/28/08 |
| .XX                                   | +/- | METRIC              | 0.30 | CHECKED Hk.wang/01/28/08     |
| .XXX                                  | +/- |                     | 0.20 | CHECKED                      |
| FRACTIONS                             | +/- |                     | 5°   |                              |
| ANGLES                                | +/- |                     |      |                              |
| FOR MATERIALS AND FINISHES            |     | DRAWING FILE :      |      |                              |
| REMOVE SHARP EDGES                    |     | ANGLE OF PROJECTION |      |                              |
| DIMENSIONS                            |     | SCALE NONE          |      |                              |
| U.S.                                  |     | TITLES              |      |                              |
| INCHES                                |     | SIZE DRAWING NO.    |      |                              |
| METRIC                                |     | MM                  |      |                              |
|                                       |     | A4 C L77DXXXX       |      |                              |
|                                       |     | REV. 1              |      |                              |
|                                       |     | SHEET 1 OF 1        |      |                              |

Amphenol®

TITLE  
machined contacts connector, D series

