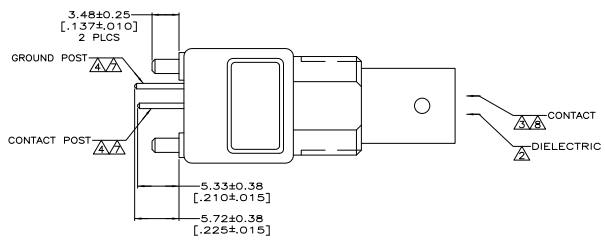
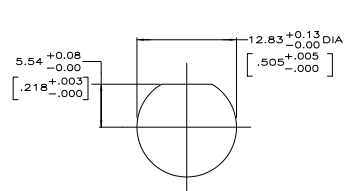
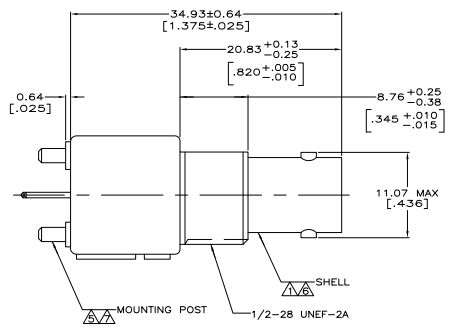
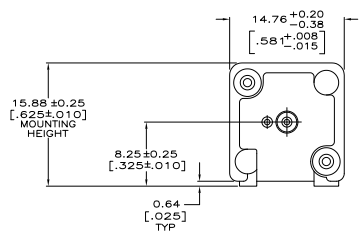


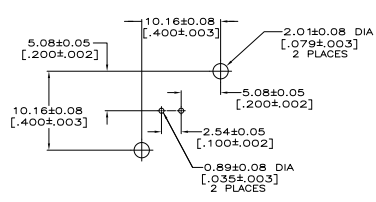
REV	DATE	DESCRIPTION	BY	CHK	APP
AJ	16				
A1		REVISED PER ECO-11-005030			



- △ ZINC PER QQ-Z-363.
 - △ POLYMETHYLPENTENE, GENERAL PURPOSE.
 - △ BERYLLIUM COPPER PER QQ-C-530.
 - △ BRASS PER ASTM-B-453.
 - △ BRASS PER ASTM-B-16.
 - △ NICKEL PLATE PER QQ-N-290,
 3.81 μm [.000150] MINIMUM THICK.
 - △ TIN PLATE PER ASTM-B-545,
 3.81 μm [.000150] MINIMUM THICK.
 - △ GOLD PLATE PER MIL-G-45204,
 0.76 μm [.000030] MINIMUM THICK.
9. SEE INSTRUCTION SHEET 408-2769.



RECOMMENDED PANEL CUTOUT



PCB CONFIGURATION

5222132-1
 PART NUMBER

THIS DRAWING IS A CONTROLLED DOCUMENT.		SUPPLIER ALCOSETA - DODGE SUPPLIER HARVENER	CUSTOMER TE Connectivity
DIMENSIONS SEE NOTES 1-5	DIMENSIONAL TOLERANCES UNLESS SPECIFIED DIMENSIONS ARE IN MILLIMETERS DECIMAL DIMENSIONS ARE TO 0.001 MILLIMETERS FRACTIONAL DIMENSIONS ARE TO 0.001 MILLIMETERS DIMENSIONS ARE TO 0.001 MILLIMETERS UNLESS SPECIFIED OTHERWISE	PART NUMBER JACK, VERTICAL, PCB 75 OHM, SERIES BNC	DATE 00779
DRAWING SEE NOTES 1-5	PART SEE NOTES 5-8	CUSTOMER DRAWING A1	DRAWING NO. 5222132