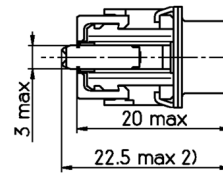
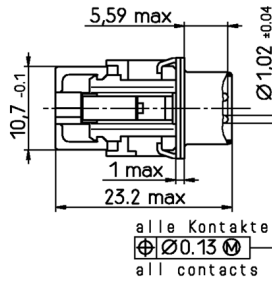
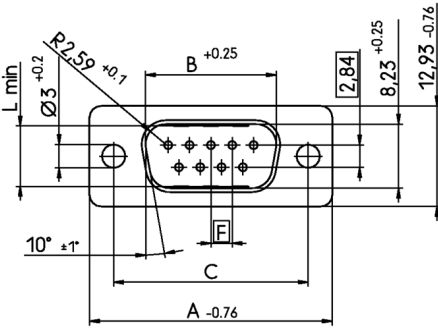


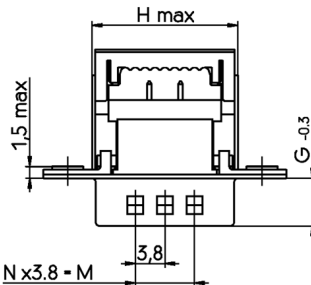
Standardausführung: V42254-A5235-C***
 standard versions: V42254-A5237-C***

Maße mit Oberenteil im
 vorgerasteten Zustand
 dimensions with snap-on
 cover prelatched

Maße mit Oberenteil im verpreßten Zustand und montierten
 Zugentlastungsbügel (standardmäßig nicht mitgeliefert)
 dimensions with press-on cover pressed down and with mounted
 strain relief clamp (not standard included)



zu verwenden Zugentlastungsbügel:
 strain relief clamp to use:
 9 p.: V42254-A4000-D9
 x-xxxxxxx-x
 15 p.: V42254-A4000-D15
 x-xxxxxxx-x
 25 p.: V42254-A4000-D25
 x-xxxxxxx-x
 37 p.: V42254-A4000-D37
 x-xxxxxxx-x



Gesamtleiter- querschnitt mm ² overall conductor cross-sectional area mm ²	AWG- Bereich AWG range	Gesamtleiter- durchmesser mm overall conductor diameter mm	Anzahl der Einzellitzen no. of single stranded wires	Leiter // conductor	Isolierhülle insulating sleeve	
					Durchmesser diameter	Material material
-	30	0.25 ³⁾	1	Massiv // solid	1 => 1.1 max	PVC
-	28	0.32 ³⁾	1	Massiv // solid	0.8 => 1.1 max	PVC
0.09 ³⁾	28	-	7	Litze // stranded	0.8 => 1.1 max	PVC
0.14	26	-	7	Litze // stranded	0.8 => 1.1 max	PVC

Sachnr. order code V42254- A523*-	Pol- zahl no. of contacts	dimension Maß	A	B	C	F	G	H	L	M	N
C*09	09		31.19	16.79	25.0 ±0.12 -0.13	2.74	6.12	18.73	7.72	7.6	2
C*15	15		39.52	25.12	33.3 ±0.15 -0.14	2.74	6.12	27.26	7.69	15.2	4
C*25	25		53.42	38.84	47.04 ±0.13 -0.13	2.76	5.99	40.78	7.65	26.6	7
C*37	37		69.7	55.3	63.5 ±0.13 -0.13	2.76	5.99	57.44	7.65	41.8	11

Zu verwendende Leitungen // cables to be used
 Flachbandkabel // ribbon cable
 Verwendet werden können alle // all commercially available
 handelsüblichen Kabel mit: // cables with:
 - einer Isolierhülle aus PVC // - insulation sleeve made of PVC
 - verzinnnten oder versilberten // - tin-coated or silver-plated
 Kupferdrähten // copper wires

Anforderungsstufe,
 performance level 1)
 dargestellt wird die 9-polige
 Ausführung
 drawn is the 9-contacts
 version

3) nur mit Zugentlastungsbügel verwenden
 2) Maße mit Zugentlastungsbügel
 1) nach DIN 41652 T.2 und T.4

3) only to use with strain relief clamp
 2) dimensions with strain relief clamp
 1) according to DIN 41652 p.2 and p.4

TE TE Connectivity

SCALE 2:1 WEIGHT

MATERIAL

DATE 06.05.91
 NAME Sterciox
 DEP. PE Com PE&SE

PART NAME
 Sub-D Schneidklemmschluß (in Blister)
 Stiftleiste mit Schirmfiederung (für Flachleitungen)
 D-Sub IDC (for ribbon cables / in blister pack)
 male connector with grounding fingers

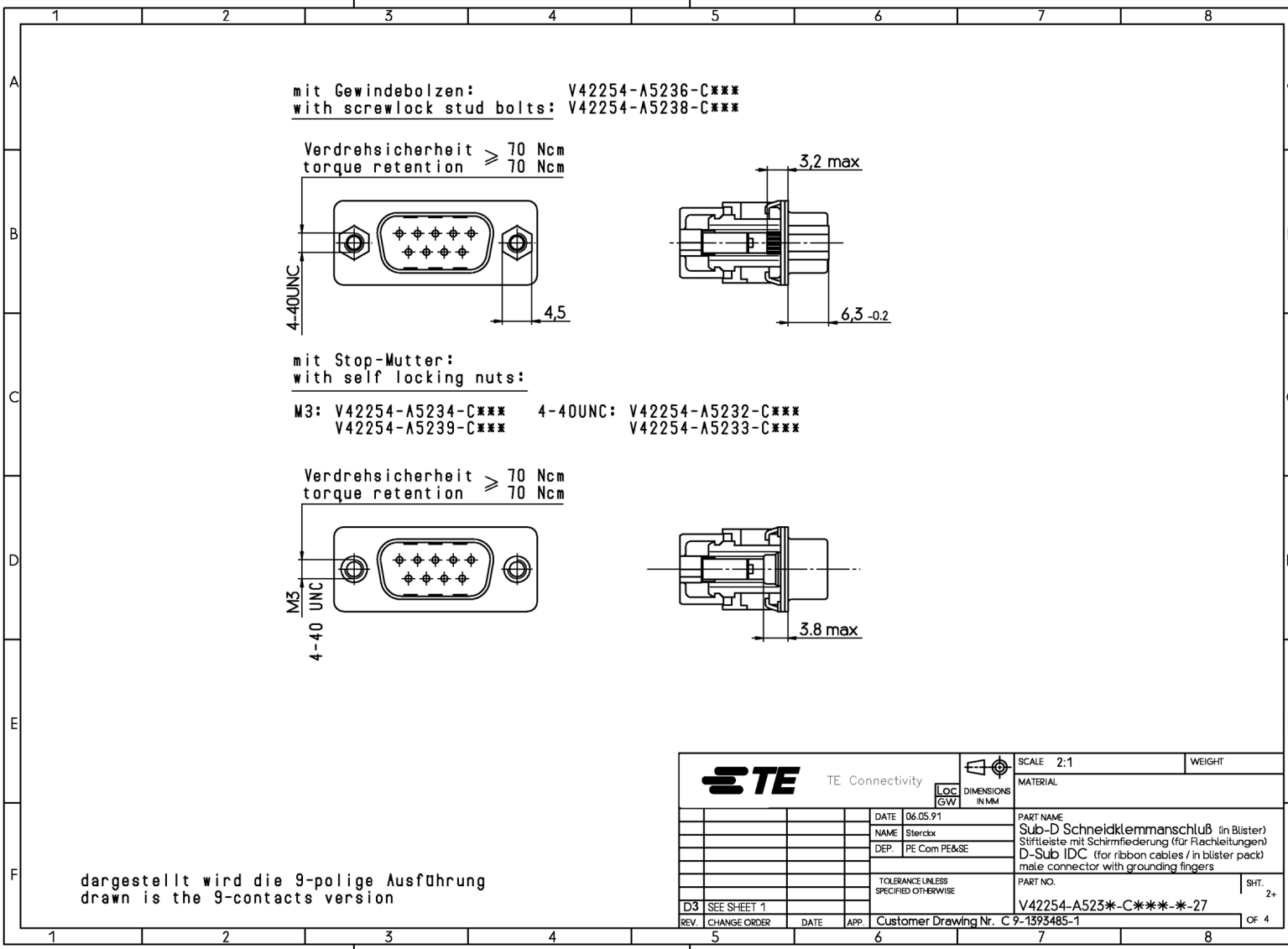
TOLERANCE UNLESS
 SPECIFIED OTHERWISE

V42254-A523*-C***-*-27

Customer Drawing Nr. C 9-1393485-1

REV. CHANGE ORDER DATE APP. OF 4

PROPRIETARY:



TE TE Connectivity		SCALE 2:1	WEIGHT
LOC DIMENSIONS IN MM		MATERIAL	
DATE 06.05.91	NAME Sterclick	PART NAME Sub-D Schneidklemmanschluß (in Blister)	
DEP. PE Com PE&SE	TOLERANCE UNLESS SPECIFIED OTHERWISE	Stiftleiste mit Schirmfiederung (für Flachleitungen)	
D3 SEE SHEET 1		D-Sub IDC (for ribbon cables / in blister pack)	
REV. CHANGE ORDER	DATE APP. Customer Drawing Nr. C 9-1393485-1	PART NO. V42254-A523*-C***-*-27	SHT. 2+ OF 4

PROPRIETARY:

V 4 2 2 5 4 - A 5 * * * - C * * *

Anschlußausführung // connection type
 2 AVG 26/28 Litze oder // AVG 26/28 stranded
 AVG 28/30 Massiv // or AVG 28/30 solid


Anschlußoberfläche // tail surface
 3 verzinkt // tinned

Steckverbinderunterscheidung // connector version						
	verzinkt tinned	mit typo- Beschriftung auf Blechteil with typo marking on the shell	mit Stop- mutter with self locking nuts	mit Gewinde- bolzen with screwlock stud bolts		
2	ja // yes	ja // yes	4-40UNC	nein // no		
3	ja // yes	nein // no	4-40UNC	nein // no		
4	ja // yes	ja // yes	M3	nein // no		
5	ja // yes	ja // yes	nein // no	nein // no		
6	ja // yes	ja // yes	nein // no	4-40UNC		
7	ja // yes	nein // no	nein // no	nein // no		
8	ja // yes	nein // no	nein // no	4-40UNC		
9	ja // yes	nein // no	M3	nein // no		

Polzahl - Gehäusegröße // no. of contacts / housing size		
09	9-polig - Gehäusegröße 1 // 9-contacts / housing size 1	
15	15-polig - Gehäusegröße 2 // 15-contacts / housing size 2	
25	25-polig - Gehäusegröße 3 // 25-contacts / housing size 3	
37	37-polig - Gehäusegröße 4 // 37-contacts / housing size 4	

Kontaktfläche / Kontaktart // contact surface / contact type			
1	Anforderungsstufe 1 / gerollte Kontakte // performance level I / rolled contacts		
2	Anforderungsstufe 2 / gerollte Kontakte // performance level II / rolled contacts		

Steckerart // connector type
 C Stiftleiste mit Schirmfiederung // male connector with grounding fingers

 TE Connectivity		SCALE	WEIGHT
DIMENSIONS IN MM		MATERIAL	
DATE	06.05.91	PART NAME	
NAME	Stercix	Sub-D Schneidklemmschluß (in Blister)	
DEP.	PE Com PE&SE	Stiftleiste mit Schirmfiederung (für Flachleitungen)	
TOLERANCE UNLESS SPECIFIED OTHERWISE		D-Sub IDC (for ribbon cables / in blister pack)	
D3 SEE SHEET 1		PART NO.	V42254-A523*-C***-*-27
REV.	CHANGE ORDER	DATE	APP.
Customer Drawing Nr. C 9-1393485-1		SHT. 5 OF 4	

PROPRIETARY:

1

2







3

4

A




Active part numbers. Contact
TE CONNECTIVITY for
other configuration availability

B

Old Part Number	TE CONNECTIVITY Part Number	
V42254-A5232-C209	9-1393485-1	
V42254-A5232-C215	9-1393485-2	
V42254-A5232-C225	9-1393485-3	
V42254-A5232-C237	4-1392010-2	OBSOLETE
V42254-A5234-C115	1-1393486-3	OBSOLETE 
V42254-A5234-C209	1-1393486-4	
V42254-A5234-C215	1-1393486-6	OBSOLETE 
V42254-A5234-C225	1-1393486-7	OBSOLETE 
V42254-A5234-C237	2-1392010-5	 OBSOLETE
V42254-A5235-C109	3-1393486-8	
V42254-A5235-C115	3-1393486-9	
V42254-A5235-C209	4-1393486-2	
V42254-A5235-C215	4-1393486-3	
V42254-A5235-C225	4-1393486-4	
V42254-A5235-C237	4-1393486-6	
V42254-A5237-C209	0-1393487-1	OBSOLETE 
V42254-A5237-C215	0-1393487-3	 OBSOLETE
V42254-A5237-C225	0-1393487-5	
V42254-A5237-C237	0-1393487-7	

C

D

-  **OBSOLETE PARTS: OBSOLETE CIS STREAMLINING PER D.RENAUD/D.SINISI**
-  **MASS OBSOLESCENCE PER WILLIAM THOMAS**
-  **MASS OBSOLESCENCE PER PIETER GROELS**

E

F



TE Connectivity


 LOC
GW
DIMENSIONS
IN MM

SCALE

WEIGHT

MATERIAL

DATE	06.05.91
NAME	Sterckx
DEP.	PE Com PE&SE

PART NAME
Sub-D Schneidklemmanschluß (in Blister)
Stiftleiste mit Schirmfiederung (für Flachleitungen)
D-Sub IDC (for ribbon cables / in blister pack)
male connector with grounding fingers

PART NO.

SHT.

V42254-A523*-C***-*27

4-

REV.	CHANGE ORDER	DATE	APP.	Customer Drawing Nr. C 9-1393485-1
------	--------------	------	------	------------------------------------

OF 4

1

2

3

4

PROPRIETARY.