

REV. NO.	DESCRIPTION	DATE	BY	APPV
1	SEE SHEET 1	-	-	-

AT AREA F 0.8 µm GOLD OVER 1.2 µm NICKEL AT AREA N;  
AT AREA C 5 µm TIN OVER 1.2 µm NICKEL

PRESS-IN AREA FOR 1.6mm PCB REQUIREMENTS FOR PCB HOLE

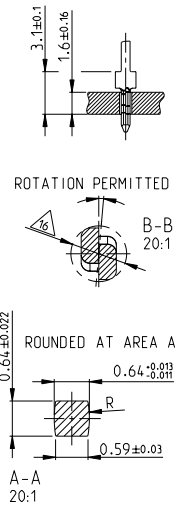
PLATED HOLE:  
DRILL-Ø: 1.0 ± 0.025  
Cu-THICKN.: 25 - 50 µm  
Sn-THICKN.: 4 - 10 µm  
FINISHED HOLE-Ø: 0.9 ± 0.07

UNPLATED HOLE:  
DRILL-Ø: 1.0 ± 0.025  
FOR SOLDER APPLICATION

ALTERNATIVE-PLATING:  
Cu-THICKN.: 25 - 50 µm  
Ni-THICKN.: 1.3 - 5 µm  
Au-THICKN.: 0.05 - 0.2 µm

- REEL UNIT 50,000 PIECES. REEL-Ø 600mm  
REEL THICKNESS SEE TABLE
- SOLDEABILITY ACC. TO IEC 60068 - 2 - 20; TEST Ta
- AT AREA N 5 µm TIN OVER 1.2 µm NICKEL
- AT AREA F 1-2 µm TIN; AT AREA C 5 µm TIN OVER 1.2 µm NICKEL
- CUT AREA FOR LOOSE PIECE PARTS DURING THE STITCHING INTO PCB DIMENSION IS DETERMINED BY THE TOOL OF THE STITCHING MACHINE
- 1000 PIECES ARE PACKED INTO SHOCK-PROOF BOX AND CLOSED WITH COVER
- AT AREA N MIN. 2.5 µm TIN OVER 1.2 µm NICKEL
- AT AREA N 1-2 µm TIN OVER 1.2 µm NICKEL
- AT AREA F 2-4 µm TIN OVER NICKEL AT AREA N;  
AT AREA C MIN. 1.2 µm TIN OVER NICKEL
- AT AREA F 0.8 µm GOLD OVER 1.2 µm NICKEL AT AREA N;  
AT AREA C 1.3-2.5 µm TIN OVER 1.2 µm NICKEL
- OBsolete PARTS: OBsolete CIS STREAMLINING PER D.RENAUD/D.SINISI
- OBsolete

SUR-FACE	A	F	L	ORDER NO. (STRIP)	ORDER NO. (LOOSE PIECE)	REEL THICKN.	ENVELOPE CIRCLE
△	6.0	5.5	6.25	5-928776-8	-	30	Ø1.05 ± 0.04
△	6.7	6.7	7.05	5-928776-6	-	30	Ø1.05 ± 0.04
△	8.0	8.0	16.8	2-928776-7	2-928836-7	44	Ø1.05 ± 0.04
△	11.4	11.2	12.4	2-928776-6	2-928836-6	35	Ø1.05 ± 0.04
△	8.5	5.5	8.8	5-928776-4	5-928836-4	32	Ø1.05 ± 0.04
△	8.5	6.0	8.8	3-928776-4	3-928836-4	32	Ø1.05 ± 0.04
△	6.7	6.7	7.05	3-928776-2	3-928836-2	30	Ø1.05 ± 0.04
△	4.8	-	5.6	2-928776-5	2-928836-5	30	Ø1.05 ± 0.04
△	8.0	-	10.8	2-928776-3	2-928836-3	35	Ø1.05 ± 0.04
△	6.7	-	7.05	2-928776-2	2-928836-2	30	Ø1.05 ± 0.04
△	19.0	-	20.1	2-928776-1	2-928836-1	44	Ø1.05 ± 0.04
△	6.0	5.5	6.25	2-928776-0	2-928836-0	30	Ø1.13 ± 0.06
△	4.0	-	4.0	1-928776-9	1-928836-9	30	Ø1.13 ± 0.06
△	6.0	-	8.3	1-928776-8	1-928836-8	32	Ø1.13 ± 0.06
△	8.0	8.0	16.8	1-928776-7	1-928836-7	44	Ø1.13 ± 0.06
△	11.4	-	12.4	1-928776-6	1-928836-6	35	Ø1.13 ± 0.06
△	4.8	4.8	5.6	1-928776-5	1-928836-5	30	Ø1.13 ± 0.06
△	8.5	8.5	8.8	1-928776-4	1-928836-4	32	Ø1.13 ± 0.06
△	8.0	8.0	10.8	1-928776-3	1-928836-3	35	Ø1.13 ± 0.06
△	6.7	6.7	7.05	1-928776-2	1-928836-2	30	Ø1.13 ± 0.06
△	19.0	19.0	20.1	1-928776-1	1-928836-1	44	Ø1.13 ± 0.06



THIS DRAWING IS A CONTROLLED DOCUMENT. DWG. NO. 15 JUN 1986  
BY: B. HOFFMANN  
CHKD: M. SCHARSCH  
DATE: 15 JUN 1986  
OPERATIVE SPEC. NO. 15 JUN 1986  
PRODUCT SPEC. NAME: G. FELDMEIER

TE Connectivity  
AMPMODU II ACTION PIN  
FOR HOLE DIAMETER 0.9mm

0 PLC	NO. 2	SIZE	CAGE CODE	DRAWING NO.	RESTRICTED TO
1 PLC	NO. 2	A2	00779	928776	-
2 PLC	NO. 2	SCALE	10:1	SHEET	2 of 2
3 PLC	NO. 2	REV	4	REV	4
4 PLC	NO. 2	APPROVAL		DATE	

MATERIAL: -  
WEIGHT: -  
CUSTOMER DRAWING