

FILE NUMBER TO IMPROVE: 8
 REVISIONS FOR FABRICATION: 7
 ALL RIGHTS RESERVED

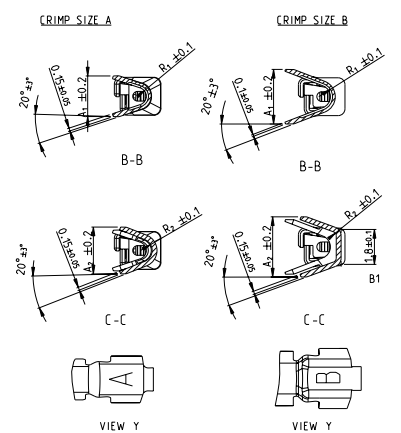
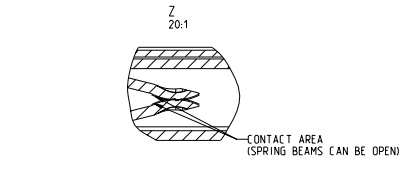
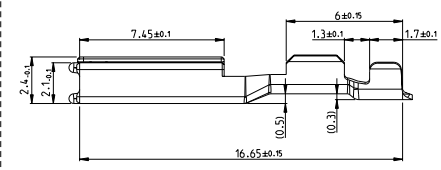
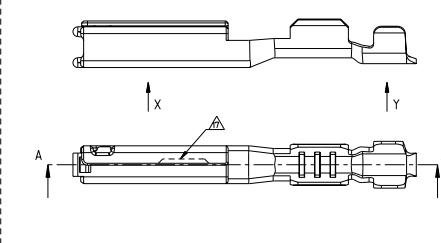
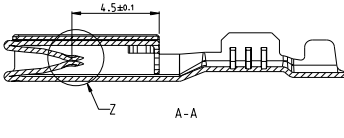
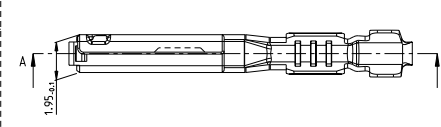


TABLE 1: TERMINAL CRIMP & GRIP REFERENCE TABLE.

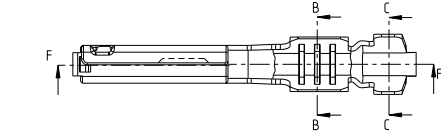
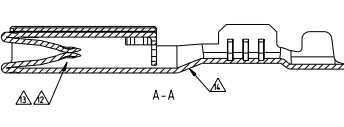
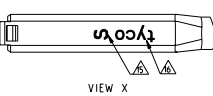
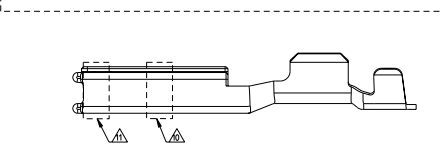
PART NO.	PART-REV.	PLATING SPECIFICATION	WEIGHT	CONDUCTOR WIRE SIZE	DIMENSIONS				CONDUCTOR CRIMP INFO	INSULATION CRIMP INFO	MATERIAL TYPE
					A1	A2	R1	R2			
0-193364-1	A	GOLD PLATING	0.27g	AWG 22	2.11	2.4	0.45	0.6	A		SEE TE CONNECTIVITY SPEC (TE-15060) CABLES FOR TYP
0-193364-2	A	GOLD PLATING	0.35	AWG 22	2.11	2.4	0.45	0.6	A		
0-193367-2	A	SILVER PLATING	0.27g	AWG 22	2.11	2.4	0.45	0.6	A		
			0.35	AWG 22	2.11	2.4	0.45	0.6	A		
0-193367-1	B	TIN PLATING	0.27g	AWG 22	2.11	2.4	0.45	0.6	A		
			0.35	AWG 22	2.11	2.4	0.45	0.6	A		
0-193365-1	A	GOLD PLATING	0.27g	AWG 20	2.8	3.1	0.6	0.2	B		
				AWG 18	2.8	3.1	0.6	0.2	B		
0-193365-2	A	GOLD PLATING	0.27g	AWG 20	2.8	3.1	0.6	0.2	B		
				AWG 18	2.8	3.1	0.6	0.2	B		
0-193366-2	A	SILVER PLATING	0.27g	AWG 20	2.8	3.1	0.6	0.2	B		
				AWG 18	2.8	3.1	0.6	0.2	B		
0-193366-1	B	TIN PLATING	0.27g	AWG 20	2.8	3.1	0.6	0.2	B		
				AWG 18	2.8	3.1	0.6	0.2	B		



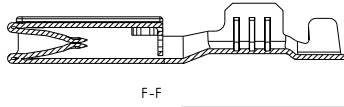
TIN-VERSION



SILVER-VERSION



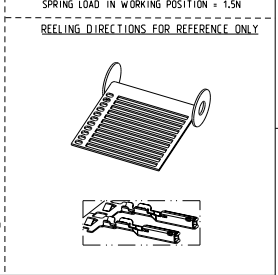
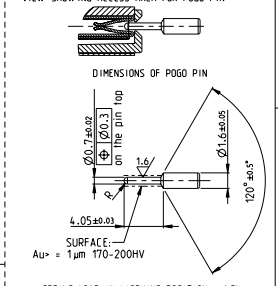
GOLD-VERSION



REVISIONS

REV	DATE	DESCRIPTION	BY	CHK	APP
BA		REVISED PER ECG-11-005150	TECH0001	DK	HPD
BS		SEE ECR-11-016793	TECH0001	GS	GS

- NOTES
- MATERIAL: COPPER ALLOY. MATERIAL THICKNESS: 1.0-2.5±0.01
 - MUST BE FREE OF CRACKS AND BURRS THAT AFFECT FUNCTIONS
 - WHEN A TIN-GOLD PLATED TERMINAL IS USED ON THE MALE SIDE THEN THE CORRESPONDING PLATING (11IN OR GOLD) MUST BE USED ON THE FEMALE TERMINAL.
 - 0.2 mm MAX RADIUS PERMISSIBLE ON EDGES AND FILLETS SHOWN AS SHARP FOR STAMPING PARTS.
 - LUBRICATION: OPTIMAL
 - THE WIDTH OF THE TRANSITION (INDICATED AREA) MUST NOT EXCEED 2.0MM
 - TE CONNECTIVITY-CRIMP SPECIFICATION: TE-15060
 - AU FLASH STRIKE ALL ROUND TO IDENTIFY Au VERSION
 - GOLD PLATING (Au): 0.18µm Au FOR GOLD SHORTING BAR APPLICATIONS (VALID FOR 193364-1 AND 193365-2 ONLY)
 - SILVER PLATING: 3.5µm (CONTACT AREA ONLY)
 - TINNISH FOR SILVER VERSION
 - SILVER FLASH
 - SILVER MARKING
 - ALTERNATE LOGO "TE" OR "1" IS ALLOWED
 - OPTIONAL NOTCH DESIGN ALLOWED
 - FOR SILVER PLATING TANNING IS ACCEPTABLE. ELECTRICAL PERFORMANCE IS NOT AFFECTED BY TANNING ON ANY OF THE SILVER PLATED SURFACES OF THE TERMINAL



THIS DRAWING IS A CONTROLLED DOCUMENT.

TE Connectivity
 GET FEMALE TERMINAL
 GET BUCHSEN KONTAKT

DATE: 1990
 REV: 1
 SEE TABLE A | 00779 | ©=1393364

CUSTOMER DRAWING