

4

3

2

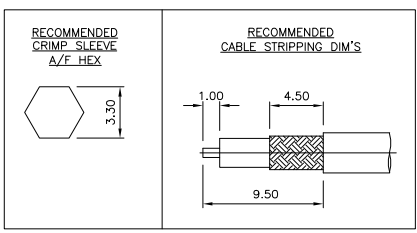
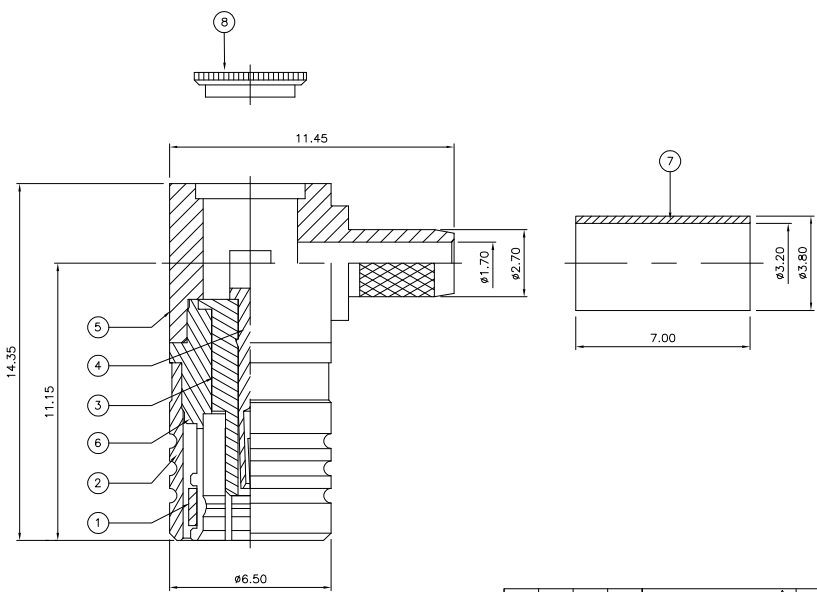
1

THIS DRAWING IS UNPUBLISHED. RELEASED FOR PUBLICATION JAN .2006.  
 © COPYRIGHT 2006 BY TYCO ELECTRONICS CORPORATION. ALL RIGHTS RESERVED.

LOC	DIST	REVISIONS			
P	LTR	DESCRIPTION	DATE	DWN	APVD
D		ECR-06-017313	18JUL06	JMS	FWK

NOTES:

- ▲ PACK IN ACCORDANCE WITH AMP SPEC 107-3275
- ▲ 100 TRAY PACK IN ACCORDANCE WITH AMP SPEC 107-3275
- ▲ Au PLATING
- 4 HAND TOOL : 9-1478240-0
- 5 DIE SET : 9-1478248-0
- 6 ELECTRICAL CHARACTERISTICS  
 FREQUENCY RANGE: DC - 4 GHz  
 NOMINAL IMPEDANCE: 50 Ohm  
 INSULATION RESISTANCE: 1000 MOhm  
 WORKING VOLTAGE: 250 Volts RMS at Sea Level  
 DIELECTRIC WITHSTAND VOLTAGE: 750 Volts RMS Max  
 CONTACT RESISTANCE: 6.00 mOhm Max  
 CENTRE CONTACT: 1.00 mOhm Max  
 OUTER CONTACT: 1.63:1  
 VSWR @ 3GHz: 1.63:1  
 INSERTION LOSS dB @ x 1.5 GHz: 0.60 Max
- 7 MECHANICAL CHARACTERISTICS  
 COUPLING NUT RETENTION FORCE: N/A  
 CABLE RETENTION FORCE: 85N Min  
 RG174A/U, 188A/U, 316/U, URM95: 500 Cycles Min  
 DURABILITY: 500 Cycles Min
- 8 ENVIRONMENTAL CHARACTERISTICS  
 OPERATING TEMPERATURE: -65 to +165 DegC
- 9 FOR TECHNICAL DATA REFER TO YOUR LOCAL TYCO ELECTRONICS SALES OFFICE
- 10 ALL DIMENSIONS ARE NOMINAL FOR REFERENCE ONLY UNLESS OTHERWISE STATED



QTY	UNIT	MATERIAL	DESCRIPTION	ITEM
1	1	BRASS	▲ CAP	8
1	1	BRASS	▲ FERRULE	7
1	1	BRASS	▲ BODY	6
1	1	BRASS	▲ CHASSIS	5
1	1	BERYLLIUM COPPER	▲ CONTACT	4
1	1	PTFE	INSULATION	3
1	1	BRASS	▲ SHELL	2
1	1	BERYLLIUM COPPER	SPRING	1
6--0	1--0	MATERIAL	DESCRIPTION	ITEM

THIS DRAWING IS A CONTROLLED DOCUMENT.

DWN: J. SANDWELL 10JAN06  
 CHK: S. PARLOW 10JAN06  
 APVD: F. WHEELER-KING 10JAN06

Product Name: SMB ELBOW PLUG CRIMP 50 OHM  
 RG174A/U, 188A/U, 316/U, URM95, KX3B, KX22A

Application Spec: 411-3247

Weight: -

Customer Drawing

Tyco Electronics Corporation  
 Bideford EX39 4HE

Size: A3 CAGE CODE: 00779 DRAWING NO: 1337478 RESTRICTED TO: -

Scale: NTS SHEET 1 OF 1 REV D