

Contents

Features	1
Pin Assignment.....	1
Pin Functions.....	1
Block Diagram	2
Instruction Set	2
Absolute Maximum Ratings	2
Recommended Operating Conditions.....	3
Pin Capacitance	3
Endurance	3
DC Electrical Characteristics	4
AC Electrical Characteristics	5
Operation.....	6
Receiving a Start-bit	13
Three-wire Interface	13
Characteristics.....	14
Ordering Information	19
Dimensions.....	20

CMOS SERIAL E²PROM

S-29XX0A Series

The S-29XX0A Series is high speed, low power 1K/2K/4K-bit E²PROM with a wide operating voltage range. They are organized as 64-word × 16-bit, 128-word × 16-bit and 256-word × 16-bit, respectively. Each is capable of sequential read, at which time addresses are automatically incremented in 16-bit blocks. The instruction code is compatible with the NM93CSXX Series.

■ Features

- Low power consumption
 - Standby : 1.0 μ A Max. (VCC=6.5 V)
 - Operating : 0.8 mA Max. (VCC=5.5 V)
 - : 0.4 mA Max. (VCC=2.5 V)
- Wide operating voltage range
 - Write : 2.5 to 6.5 V
 - Read : 1.8 to 6.5 V
- Sequential read capable
- Endurance : 10⁵ cycles/word
- Data retention : 10 years
- S-29130A : 1K bits NM93CS46 instruction code compatible
- S-29220A : 2K bits NM93CS56 instruction code compatible
- S-29230A : 2K bits CAT35C102 instruction code compatible
- S-29330A : 4K bits NM93CS66 instruction code compatible

■ Pin Assignment

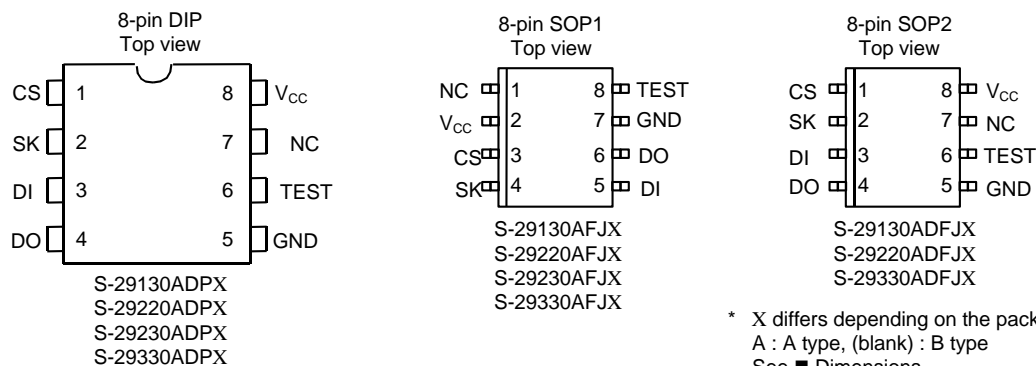


Figure 1

■ Pin Functions

Table 1

Name	Pin Number			Function
	DIP	SOP1	SOP2	
CS	1	3	1	Chip select input
SK	2	4	2	Serial clock input
DI	3	5	3	Serial data input
DO	4	6	4	Serial data output
GND	5	7	5	Ground
TEST	6	8	6	Test pin (normally kept open) (can be connected to GND or Vcc)
NC	7	1	7	No Connection
V _{CC}	8	2	8	Power supply

- **Block Diagram**

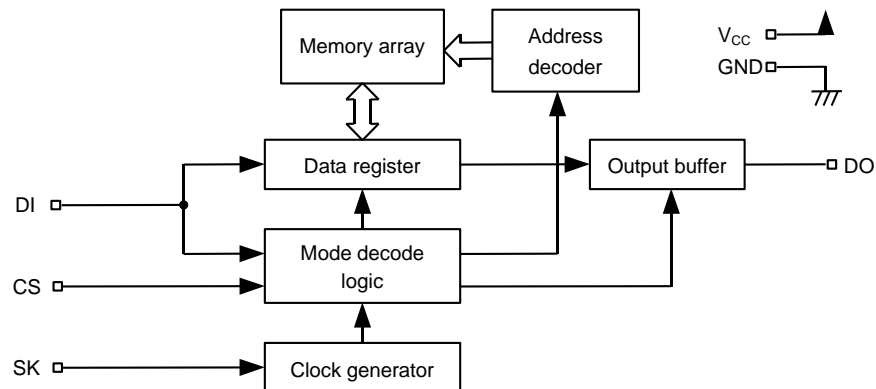


Figure 2

- **Instruction Set**

Table 2

Instruction	Start Bit	Op code	Address				Data
			S-29130A	S-29230A	S-29220A	S-29330A	
READ (Read data)	1	10	A ₅ to A ₀	A ₆ to A ₀	XA ₆ to A ₀	A ₇ to A ₀	D ₁₅ to D ₀ Output*
WRITE(Write data)	1	01	A ₅ to A ₀	A ₆ to A ₀	XA ₆ to A ₀	A ₇ to A ₀	D ₁₅ to D ₀ Input
ERASE (Erase data)	1	11	A ₅ to A ₀	A ₆ to A ₀	XA ₆ to A ₀	A ₇ to A ₀	—
WRAL(Write all)	1	00	01xxxx	01xxxxx	01xxxxxx	01xxxxxxx	D ₁₅ to D ₀ Input
ERAL (Erase all)	1	00	10xxxx	10xxxxx	10xxxxxx	10xxxxxxx	—
EWEN (Program enable)	1	00	11xxxx	11xxxxx	11xxxxxx	11xxxxxxx	—
EWDS (Program disable)	1	00	00xxxx	00xxxxx	00xxxxxx	00xxxxxxx	—

x : Doesn't matter.

* : Addresses are continuously incremented.

- **Absolute Maximum Ratings**

Table 3

Parameter	Symbol	Ratings	Unit
Power supply voltage	V_{CC}	-0.3 to +7.0	V
Input voltage	V_{IN}	-0.3 to $V_{CC}+0.3$	V
Output voltage	V_{OUT}	-0.3 to V_{CC}	V
Storage temperature under bias	T_{bias}	-50 to +95	°C
Storage temperature	T_{sto}	-65 to +150	°C

■ Recommended Operating Conditions

Table 4

Parameter	Symbol	Conditions	Min.	Typ.	Max.	Unit
Power supply voltage	V_{CC}	Read Operation	1.8	—	6.5	V
		Write Enable/Disable				
		Write Operation	2.5	—	6.5	V
High level input voltage	V_{IH}	$V_{CC}=5.5$ to 6.5 V	$0.8 \times V_{CC}$	—	V_{CC}	V
		$V_{CC}=4.5$ to 5.5 V	2.0	—	V_{CC}	V
		$V_{CC}=2.7$ to 4.5 V	$0.8 \times V_{CC}$	—	V_{CC}	V
		$V_{CC}=1.8$ to 2.7 V	$0.8 \times V_{CC}$	—	V_{CC}	V
Low level input voltage	V_{IL}	$V_{CC}=5.5$ to 6.5 V	0.0	—	$0.2 \times V_{CC}$	V
		$V_{CC}=4.5$ to 5.5 V	0.0	—	0.8	V
		$V_{CC}=2.7$ to 4.5 V	0.0	—	$0.2 \times V_{CC}$	V
		$V_{CC}=1.8$ to 2.7 V	0.0	—	$0.15 \times V_{CC}$	V
Operating temperature	T_{opr}		-40	—	+85	°C

■ Pin Capacitance

Table 5

($T_a=25^\circ\text{C}$, $f=1.0$ MHz, $V_{CC}=5$ V)

Parameter	Symbol	Conditions	Min.	Typ.	Max.	Unit
Input Capacitance	C_{IN}	$V_{IN} = 0$ V	—	—	8	pF
Output Capacitance	C_{OUT}	$V_{OUT} = 0$ V	—	—	10	pF

■ Endurance

Table 6

Parameter	Symbol	Min.	Typ.	Max.	Unit
Endurance	N_W	10^5	—	—	cycles/word

■ **DC Electrical Characteristics**

Table 7

Parameter	SmbI	Conditions	V _{CC} =5.5 V to 6.5 V			V _{CC} =4.5 V to 5.5 V			V _{CC} =2.5 to 4.5 V			V _{CC} =1.8 to 2.5 V			Unit
			Min.	Typ.	Max.	Min.	Typ.	Max.	Min.	Typ.	Max.	Min.	Typ.	Max.	
Current consumption (READ)	I _{CC1}	DO unloaded	—	—	1.0	—	—	0.8	—	—	0.6	—	—	0.4	mA
Current consumption (PROGRAM)	I _{CC2}	DO unloaded	—	—	2.5	—	—	2.0	—	—	1.5				mA

Table 8

Parameter	SmbI	Conditions	V _{CC} =4.5 V to 6.5 V			V _{CC} =2.5 to 4.5 V			V _{CC} =1.8 to 2.5 V			Unit
			Min.	Typ.	Max.	Min.	Typ.	Max.	Min.	Typ.	Max.	
Standby current consumption	I _{SB}	CS=GND DO=Open Connected to V _{CC} or GND	—	—	1.0	—	—	0.6	—	—	0.4	μA
Input leakage current	I _{LI}	V _{IN} =GND to V _{CC}	—	0.1	1.0	—	0.1	1.0	—	0.1	1.0	μA
Output leakage current	I _{LO}	V _{OUT} =GND to V _{CC}	—	0.1	1.0	—	0.1	1.0	—	0.1	1.0	μA
Low level output voltage	V _{OL}	I _{OL} =2.1 mA	—	—	0.45							V
		I _{OL} =100 μA	—	—	0.1	—	—	0.1	—	—	0.1	V
High level output voltage	V _{OH}	I _{OH} =-400 μA	2.4	—	—							V
		I _{OH} =-100 μA	V _{CC} -0.7	—	—	V _{CC} -0.7	—	—				V
		I _{OH} =-10 μA	V _{CC} -0.7	—	—	V _{CC} -0.7	—	—	V _{CC} -0.3	—	—	V
Write enable latch data hold voltage	V _{DH}	Only when write disable mode	1.5	—	—	1.5	—	—	1.5	—	—	V

■ AC Electrical Characteristics

Table 9

Input pulse voltage	$0.1 \times V_{CC}$ to $0.9 \times V_{CC}$
Output reference voltage	$0.5 \times V_{CC}$
Output load	100pF

Table 10

Parameter	Smb1	$V_{CC}=4.5$ to $6.5V$			$V_{CC}=2.5$ to $4.5 V$			$V_{CC}=1.8$ to $2.5V$			Unit
		Min.	Typ.	Max.	Min.	Typ.	Max.	Min.	Typ.	Max.	
CS setup time	t_{CSS}	0.2	—	—	0.4	—	—	1.0	—	—	μs
CS hold time	t_{CSH}	0.2	—	—	0.4	—	—	1.0	—	—	μs
CS deselect time	t_{CDS}	0.2	—	—	0.2	—	—	0.4	—	—	μs
Data setup time	t_{DS}	0.2	—	—	0.4	—	—	0.8	—	—	μs
Data hold time	t_{DH}	0.2	—	—	0.4	—	—	0.8	—	—	μs
Output delay	t_{PD}	—	—	0.4	—	—	1.0	—	—	2.0	μs
Clock frequency	f_{SK}	0	—	2.0	0	—	0.5	—	—	0.25	MHz
Clock pulse width	t_{SKH}, t_{SKL}	0.25	—	—	1.0	—	—	2.0	—	—	μs
Output disable time	t_{HZ1}, t_{HZ2}	0	—	0.15	0	—	0.5	0	—	1.0	μs
Output enable time	t_{SV}	0	—	0.15	0	—	0.5	0	—	1.0	μs
Programming time	t_{PR}	—	4.0	10.0	—	4.0	10.0	—	—	—	ms

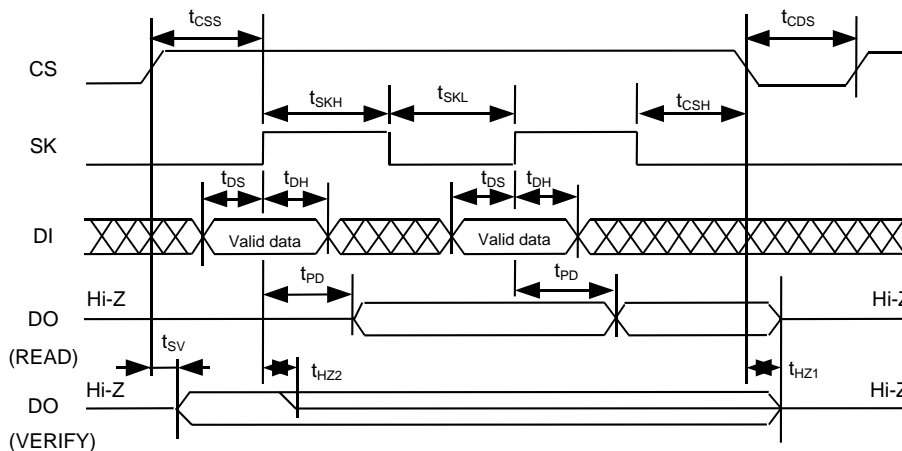


Figure 3 Timing Chart

- **Operation**

Instructions (in the order of start-bit, instruction, address, and data) are latched to DI in synchronization with the rising edge of SK after CS goes high. A start-bit can only be recognized when the high of DI is latched to the rising edge of SK when CS goes from low to high, it is impossible for it to be recognized as long as DI is low, even if there are SK pulses after CS goes high. Any SK pulses input while DI is low are called dummy clocks." Dummy clocks can be used to adjust the number of clock cycles needed by the serial IC to match those sent out by the CPU. Instruction input finishes when CS goes low, where it must be between commands during t_{CDS} .

All input, including DI and SK signals, is ignored while CS is low, which is stand-by mode.

1. Read

The READ instruction reads data from a specified address. After A0 is latched at the rising edge of SK, DO output changes from a high-impedance state (Hi-Z) to low level output. Data is continuously output in synchronization with the rise of SK.

When all of the data (D0) in the specified address has been read, the data in the next address can be read with the input of another SK clock. Thus, it is possible for all of the data addresses to be read through the continuous input of SK clocks as long as CS is high.

The last address ($A_n \dots A_1 A_0 = 1 \dots 11$) rolls over to the top address ($A_n \dots A_0 = 0 \dots 00$).

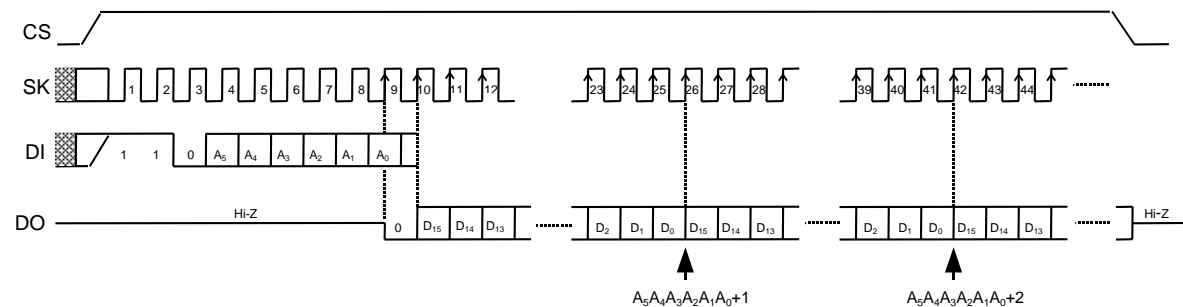


Figure 4 Read Timing (S-29130A)

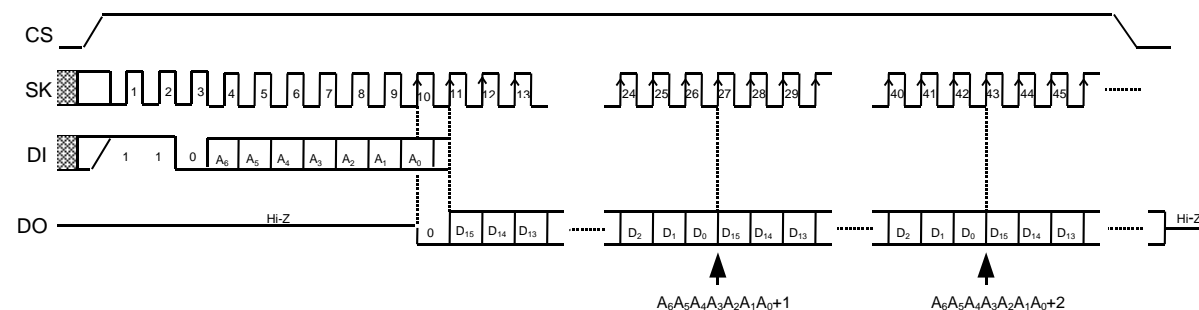


Figure 5 Read Timing (S-29230A)

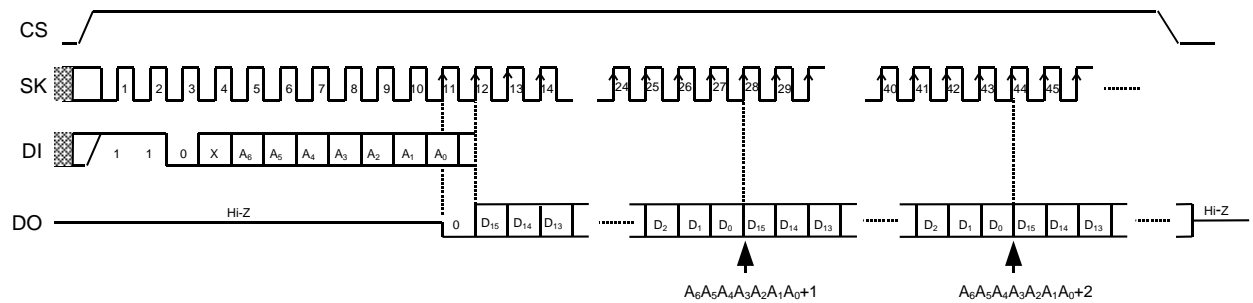


Figure 6 Read Timing (S-29220A)

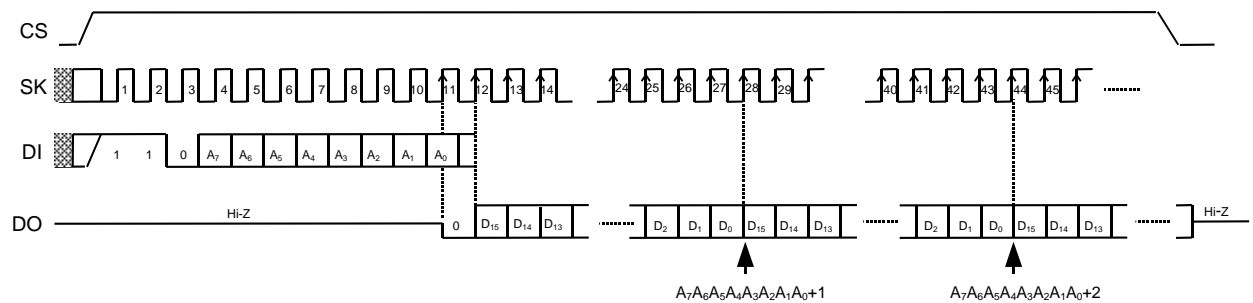


Figure 7 Read Timing (S-29330A)

2. WRITE (WRITE, ERASE, WRAL, ERAL)

There are four write instructions, WRITE, ERASE, WRAL, and ERAL. Each automatically begins writing to the non-volatile memory when CS goes low at the completion of the specified clock input.

The write operation is completed in 10 ms (t_{PR} Max.), and the typical write period is less than 5 ms. In the S-29XX0A Series, it is easy to VERIFY the completion of the write operation in order to minimize the write cycle by setting CS to high and checking the DO pin, which is low during the write operation and high after its completion. This VERIFY procedure can be executed over and over again.

Because all SK and DI inputs are ignored during the write operation, any input of instruction will also be disregarded. When DO outputs high after completion of the write operation or if it is in the high-impedance state (Hi-Z), the input of instructions is available. Even if the DO pin remains high, it will enter the high-impedance state upon the recognition of a high of DI (start-bit) attached to the rising edge of an SK pulse. (see Figure 3).

DI input should be low during the VERIFY procedure.

2.1 WRITE

This instruction writes 16-bit data to a specified address.

After changing CS to high, input a start-bit, op-code (WRITE), address, and 16-bit data. If there is a data overflow of more than 16 bits, only the last 16-bits of the data is considered valid. Changing CS to low will start the WRITE operation. It is not necessary to make the data "1" before initiating the WRITE operation.

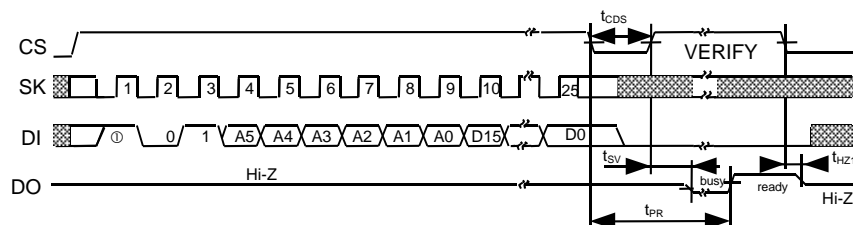


Figure 8 WRITE Timing (S-29130A)

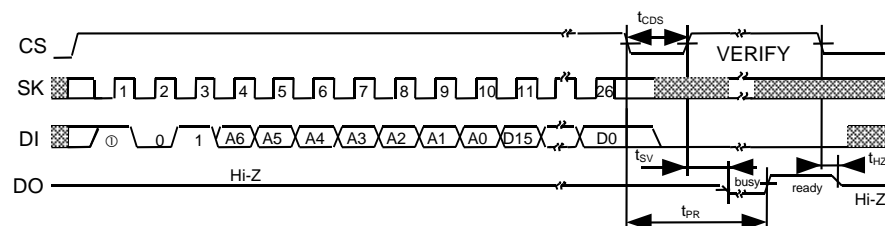


Figure 9 WRITE Timing (S-29230A)

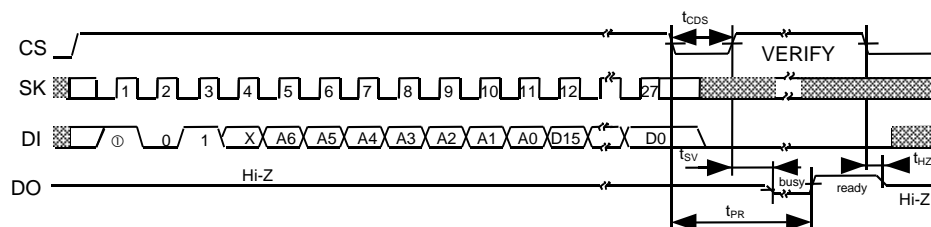


Figure 10 WRITE Timing (S-29220A)

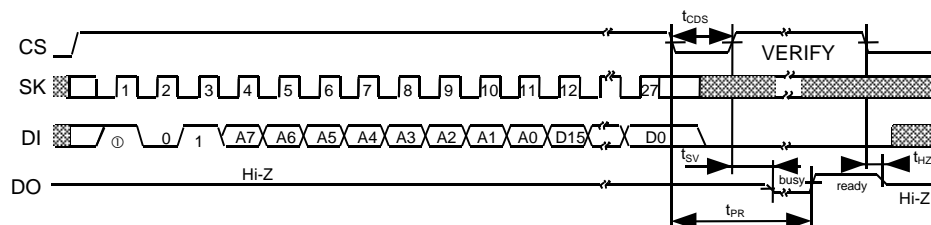


Figure 11 WRITE Timing (S-29330A)

2.2 ERASE

This command erases 16-bit data in a specified address.

After changing CS to high, input a start-bit, op-code (ERASE), and address. It is not necessary to input data. Changing CS to low will start the ERASE operation, which changes every bit of the 16 bit data to "1."

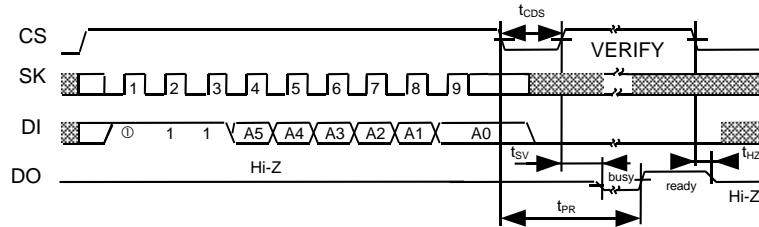


Figure 12 ERASE Timing (S-29130A)

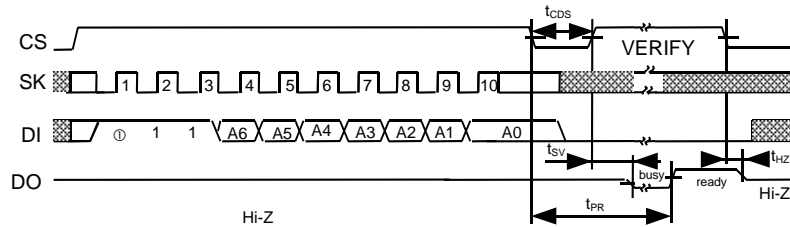


Figure 13 ERASE Timing (S-29230A)

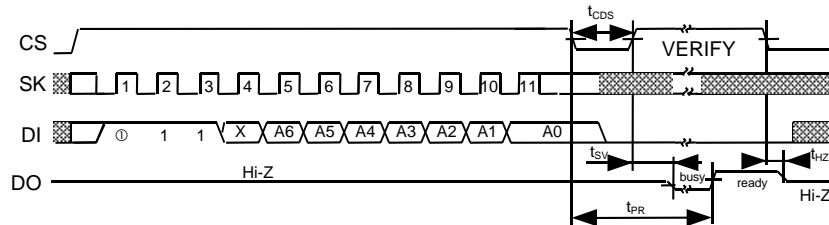


Figure 14 ERASE Timing (S-29220A)

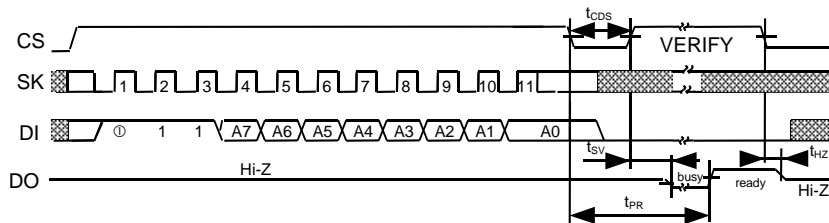


Figure 15 ERASE Timing (S-29330A)

2.3 WRAL

This instruction writes the same 16-bit data into every address.

After changing CS to high, input a start-bit, op-code (WRAL), address (optional), and 16-bit data. If there is a data overflow of more than 16 bits, only the last 16-bits of the data is considered valid. Changing CS to low will start the WRAL operation. It is not necessary to make the data "1" before initiating the WRAL operation.

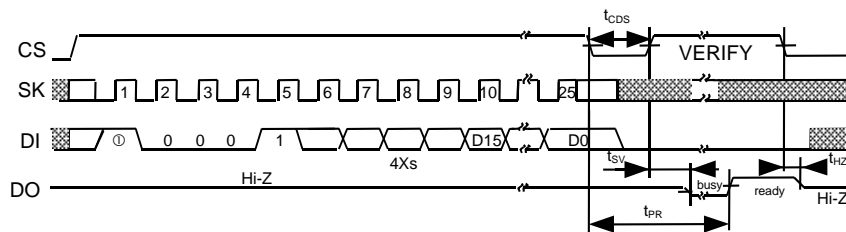


Figure 16 WRAL Timing (S-29130A)

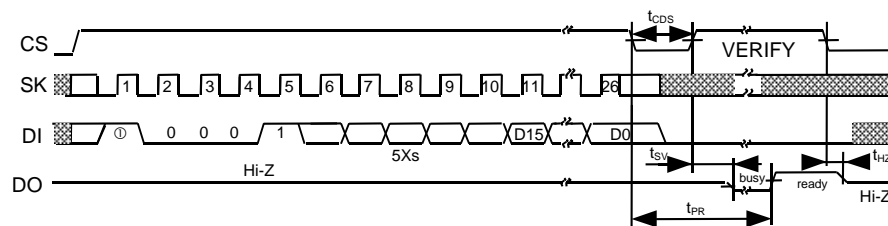


Figure 17 WRAL Timing (S-29230A)

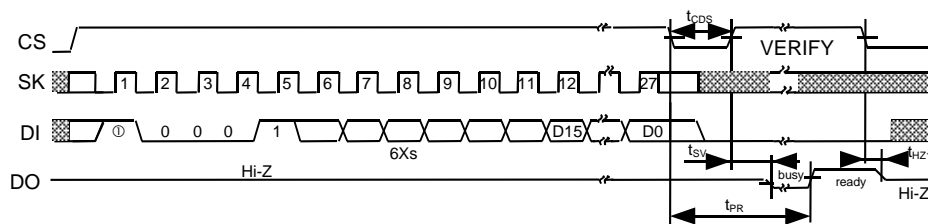


Figure 18 WRAL Timing (S-29220A)

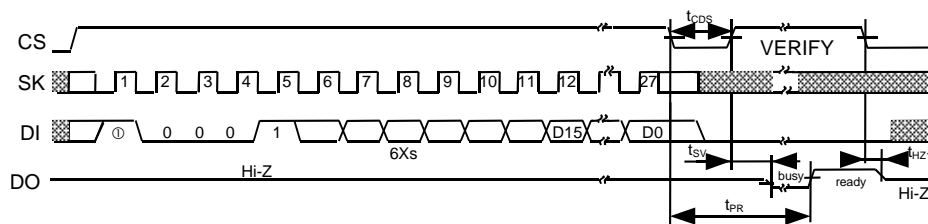


Figure 19 WRAL Timing (S-29330A)

2.4 ERAL

This instruction erases the data in every address.

After changing CS to high, input a start-bit, op-code (ERAL), and address (optional). It is not necessary to input data. Changing CS to low will start the ERAL operation, which changes every bit of data to "1."

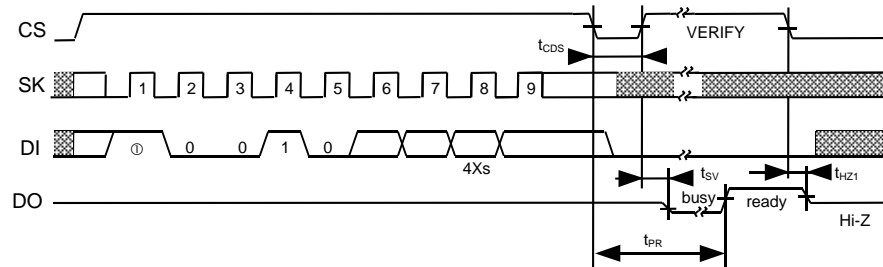


Figure 20 ERAL Timing (S-29130A)

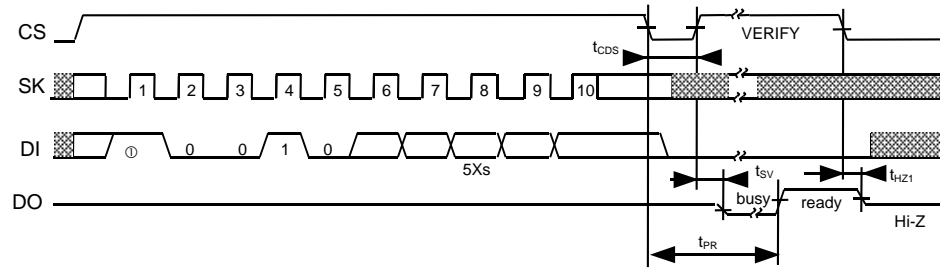


Figure 21 ERAL Timing (S-29230A)

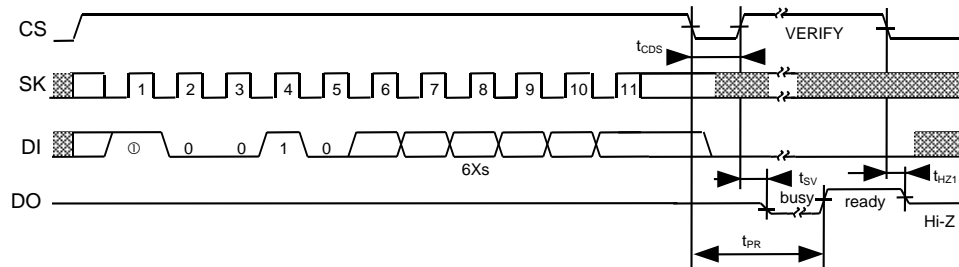


Figure 22 ERAL Timing (S-29220A)

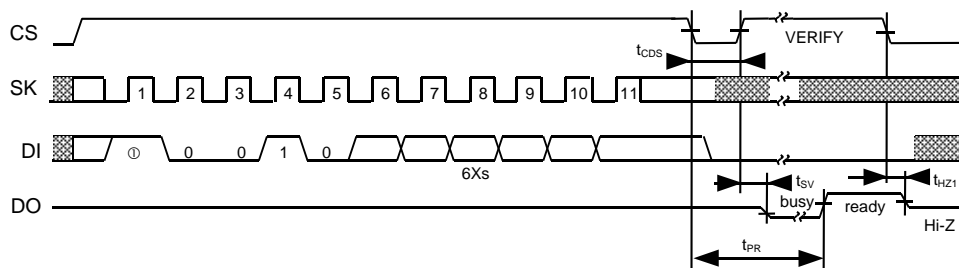


Figure 23 ERAL Timing (S-29330A)

3. Write enable (EWEN) and Write disable (EWDS)

The EWEN instruction puts the S-29XX0A Series into write enable mode, which accepts WRITE, ERASE, WRAL, and ERAL instructions. The EWDS instruction puts the S-29XX0A Series into write disable mode, which refuses WRITE, ERASE, WRAL, and ERAL instructions.

The S-29XX0A Series powers on in write disable mode, which protects data against unexpected, erroneous write operations caused by noise and/or CPU malfunctions. It should be kept in write disable mode except when performing write operations.

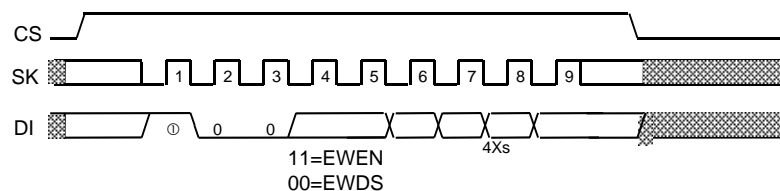


Figure 24 EWEN/EWDS Timing (S-29130A)

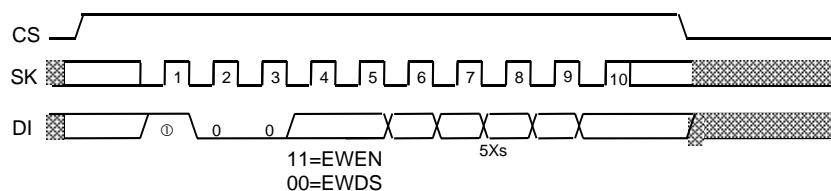


Figure 25 EWEN/EWDS Timing (S-29230A)

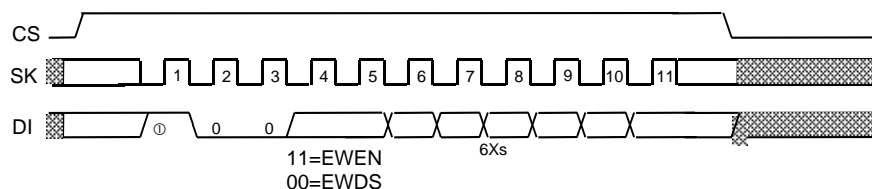


Figure 26 EWEN/EWDS Timing (S-29220A)

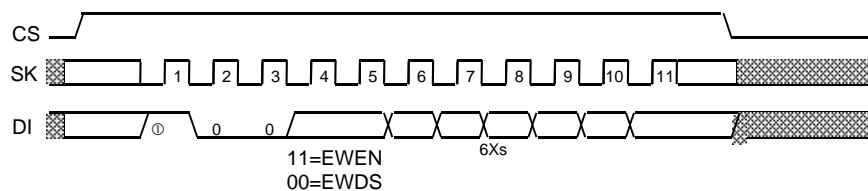


Figure 27 EWEN/EWDS Timing (S-29330A)

■ Receiving a Start-Bit

Both the recognition of a start-bit and the VERIFY procedure occur when CS is " high ". Therefore, only after a write operation, in order to accept the next command by having CS go high, will the DO pin switch from a state of high-impedence to a state of data output; but if it recognizes a start-bit, the DO pin returns to a state of high-impedence.

■ Three-wire Interface (DI-DO direct connection)

Although the normal configuration of a serial interface is a 4-wire interface to CS, SK, DI, and DO, a 3-wire interface is also a possibility by connecting DI and DO. However, since there is a possibility that the DO output from the serial memory IC will interfere with the data output from the CPU with a 3-wire interface, install a resistor between DI and DO in order to give preference to data output from the CPU to DI (See Figure 28).

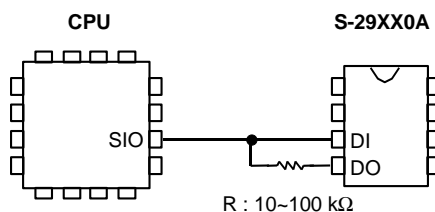
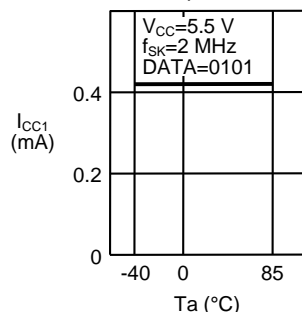


Figure 28

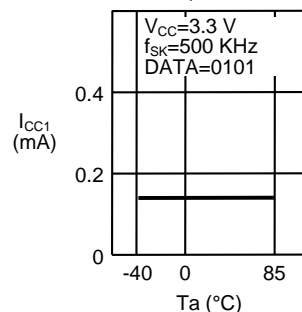
■ **Characteristics**

1. DC Characteristics

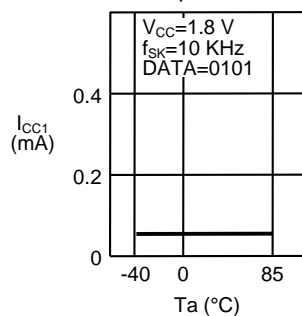
1.1 Current consumption (READ) I_{CC1} – Ambient temperature T_a



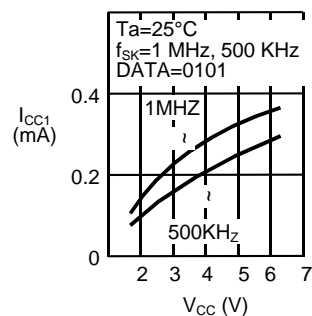
1.2 Current consumption (READ) I_{CC1} – Ambient temperature T_a



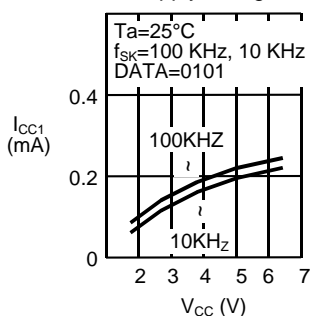
1.3 Current consumption (READ) I_{CC1} – Ambient temperature T_a



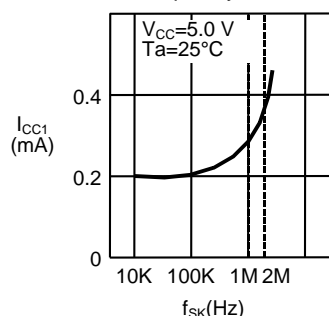
1.4 Current consumption (READ) I_{CC1} – Power supply voltage V_{CC}



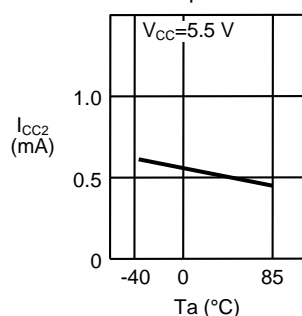
1.5 Current consumption (READ) I_{CC1} – Power supply voltage V_{CC}



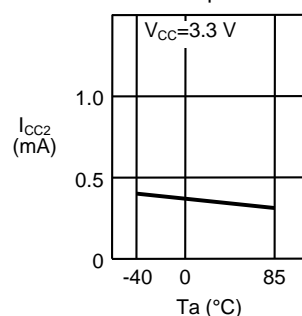
1.6 Current consumption (READ) I_{CC1} – Clock frequency f_{SK}



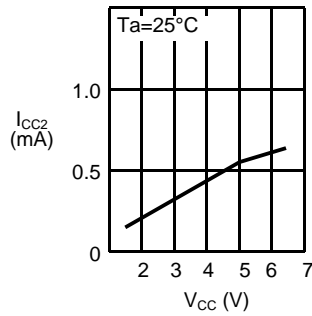
1.7 Current consumption (PROGRAM) I_{CC2} – Ambient temperature T_a



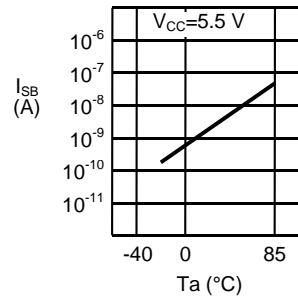
1.8 Current consumption (PROGRAM) I_{CC2} – Ambient temperature T_a



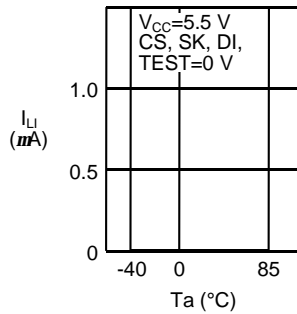
1.9 Current consumption (PROGRAM) I_{CC2} –
Power supply voltage V_{CC}



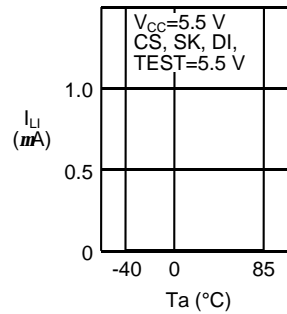
1.10 Standby current consumption I_{SB} –
Ambient temperature T_a



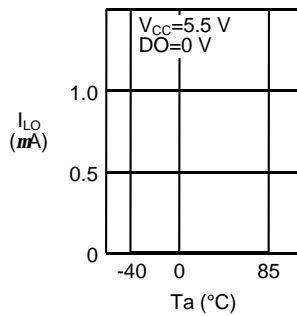
1.11 Input leakage current I_{LI} –
Ambient temperature T_a



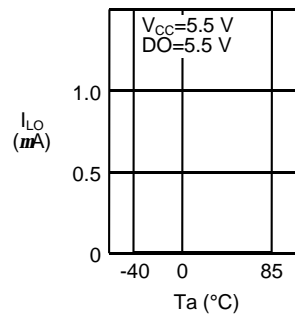
1.12 Input leakage current I_{LI} –
Ambient temperature T_a



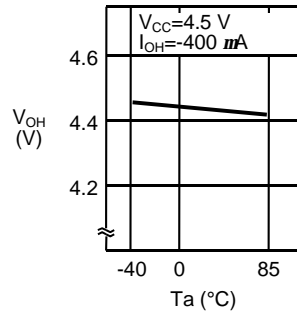
1.13 Output leakage current I_{LO} –
Ambient temperature T_a



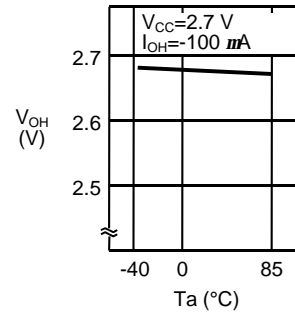
1.14 Output leakage current I_{LO} –
Ambient temperature T_a



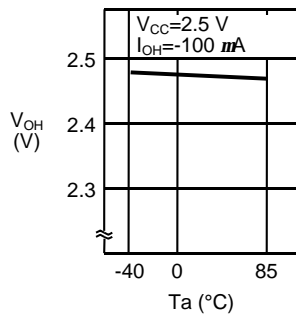
1.15 High level output voltage V_{OH} –
Ambient temperature T_a



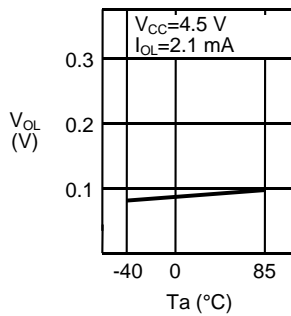
1.16 High level output voltage V_{OH} –
Ambient temperature T_a



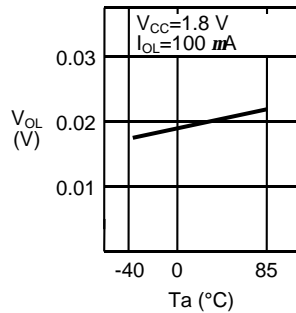
1.17 High level output voltage V_{OH} – Ambient temperature T_a



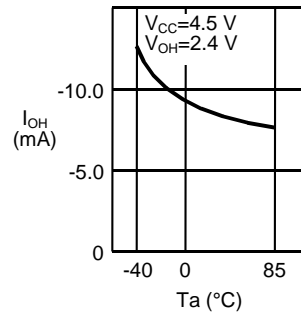
1.18 Low level output voltage V_{OL} – Ambient temperature T_a



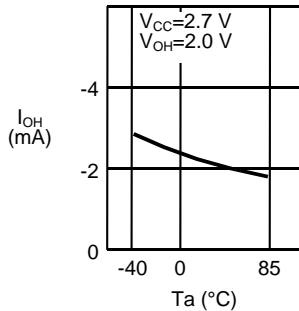
1.19 Low level output voltage V_{OL} – Ambient temperature T_a



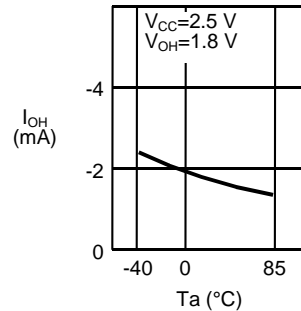
1.20 High level output current I_{OH} – Ambient temperature T_a



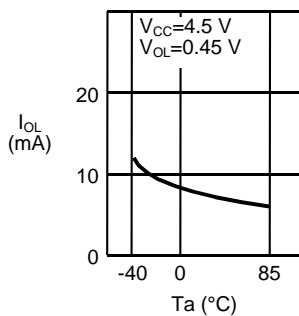
1.21 High level output current I_{OH} – Ambient temperature T_a



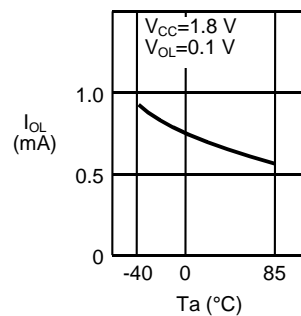
1.22 High level output current I_{OH} – Ambient temperature T_a



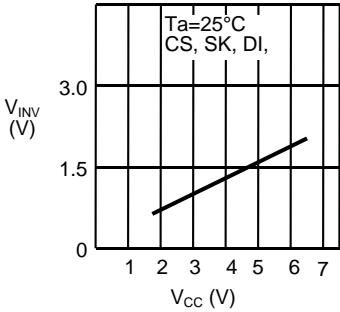
1.23 Low level output current I_{OL} – Ambient temperature T_a



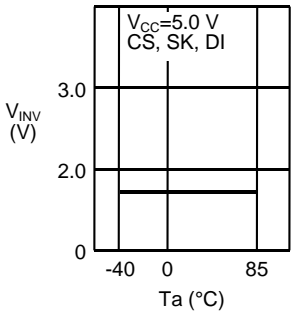
1.24 Low level output current I_{OL} – Ambient temperature T_a



1.25 Input voltage $V_{IN}(V_{IL}, V_{IH})$ –
Power supply voltage V_{CC}

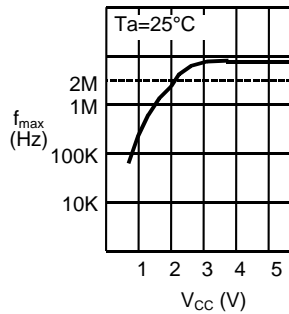


1.26 Input voltage $V_{IN}(V_{IL}, V_{IH})$ –
Ambient temperature T_a

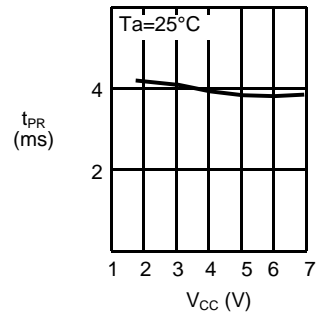


2. AC Characteristics

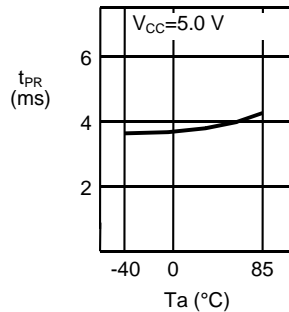
2.1 Maximum operating frequency f_{max} – Power supply voltage V_{CC}



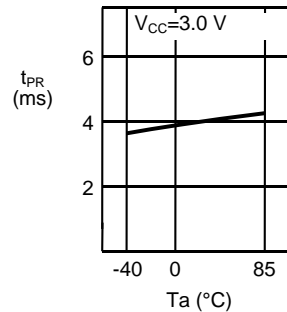
2.2 Program time t_{PR} – Power supply voltage V_{CC}



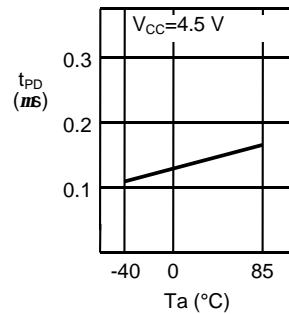
2.3 Program time t_{PR} – Ambient temperature T_a



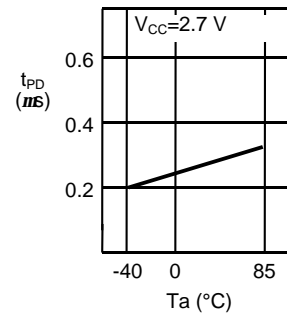
2.4 Program time t_{PR} – Ambient temperature T_a



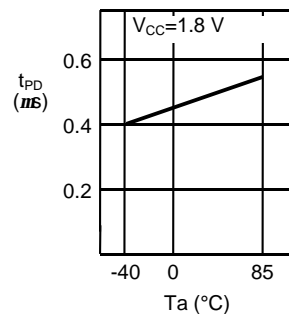
2.5 Data output delay time t_{PD} – Ambient temperature T_a



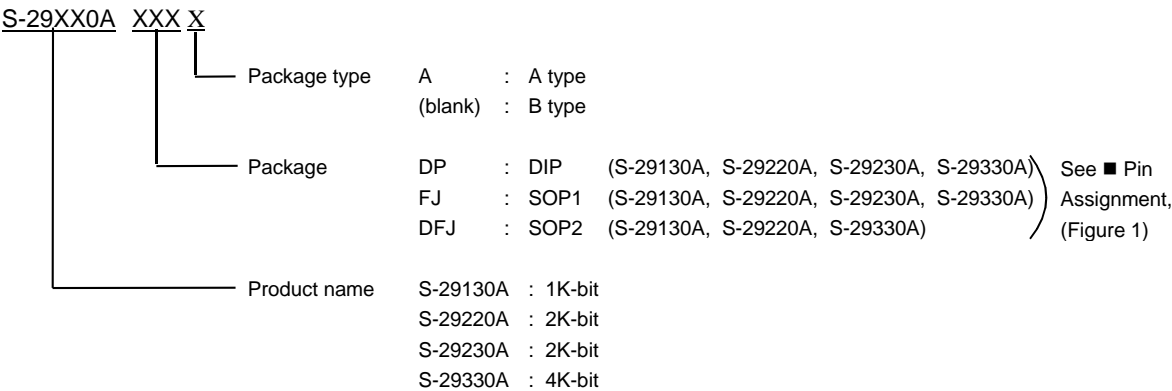
2.6 Data output delay time t_{PD} – Ambient temperature T_a



2.7 Data output delay time t_{PD} – Ambient temperature T_a



■ Ordering Information



1. 8-pin DIP

There are two types of packages : A or B.

A type

S-29130ADPA
S-29220ADPA
S-29230ADPA
S-29330ADPA

B type

S-29130ADP
S-29220ADP
S-29230ADP
S-29330ADP

2. 8-pin SOP

There are two types of packages : A or B.

A type

<SOP1>
S-29130AFJA
S-29220AFJA
S-29230AFJA
S-29330AFJA

<SOP2>
S-29130ADFJA
S-29220ADFJA
S-29330ADFJA

* SOP1 and SOP2 show
Difference of the Pin
Assignment.
See Figure 1.

B type

<SOP1>
S-29130AFJ
S-29220AFJ
S-29230AFJ
S-29330AFJ

<SOP2>
S-29130ADFJ
S-29220ADFJ
S-29330ADFJ

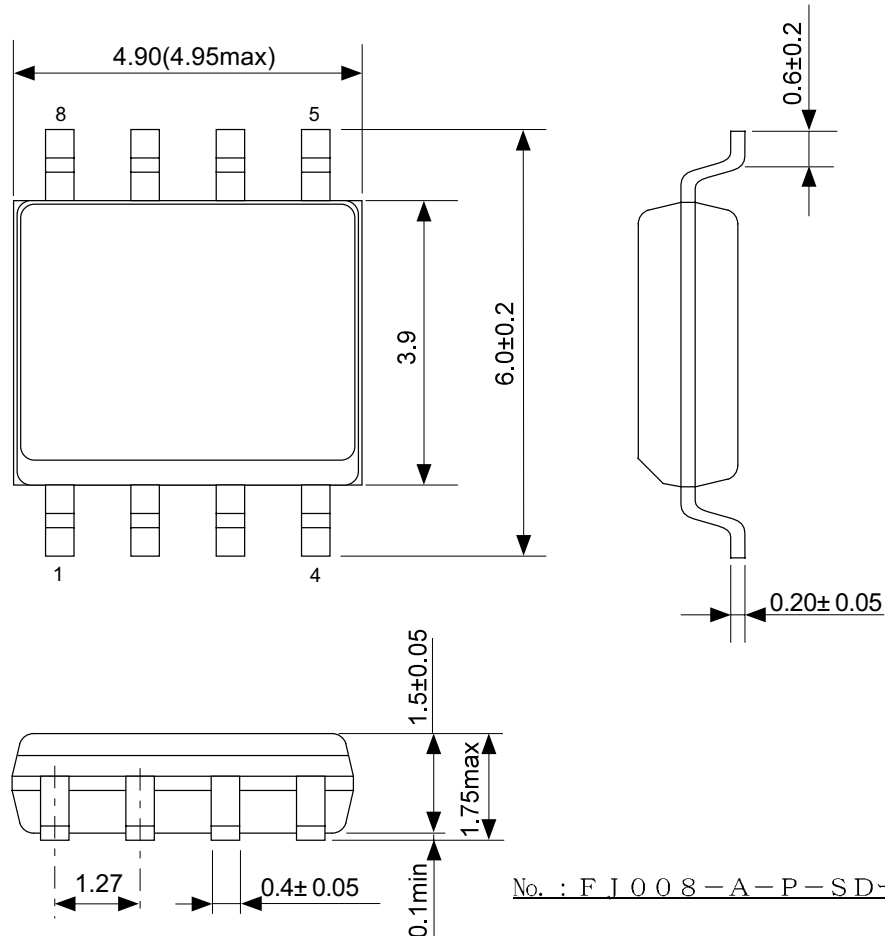
* SOP1 and SOP2 show
Difference of the Pin
Assignment.
See Figure 1.

■ 8-pin SOP

FJ008-A 990531

●Dimensions

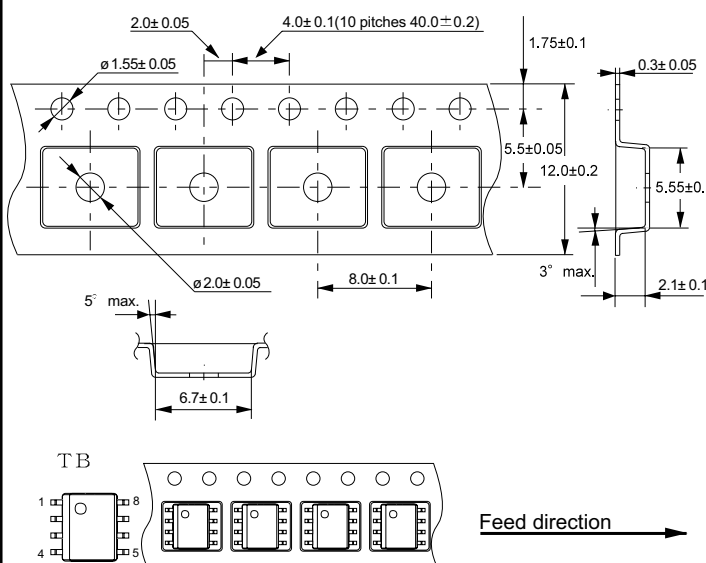
Unit:mm



No. : F J 0 0 8 - A - P - S D - 1 . 0

●Taping Specifications

●Reel Specifications

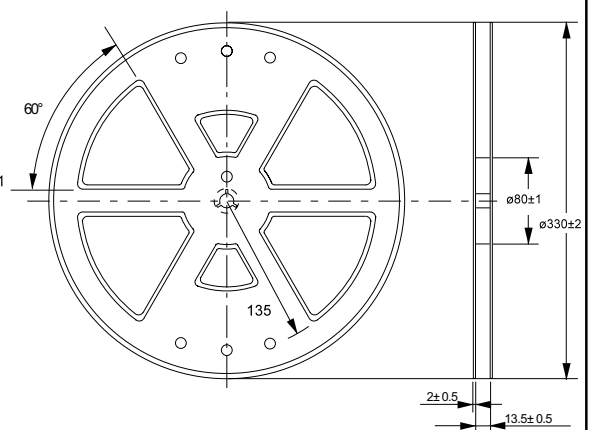


TB

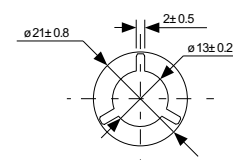
1 8
4 5

Feed direction

No. : F J 0 0 8 - A - C - S D - 1 . 0



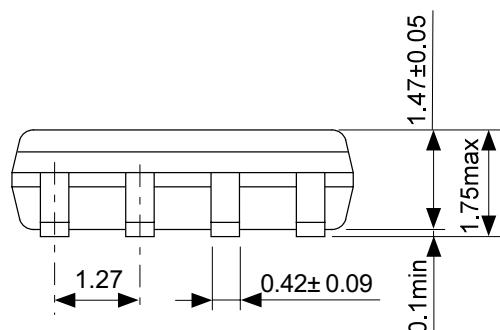
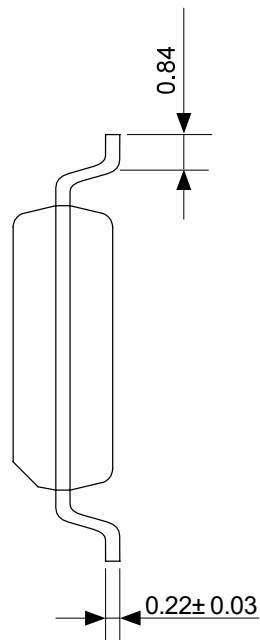
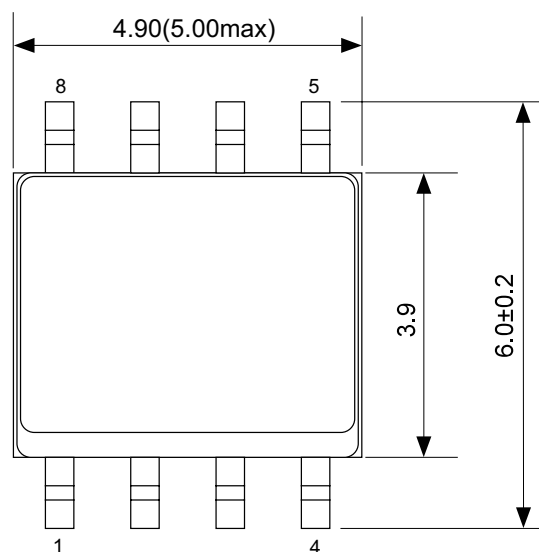
Winding core



No. : F J 0 0 8 - A - R - S D - 1 . 0

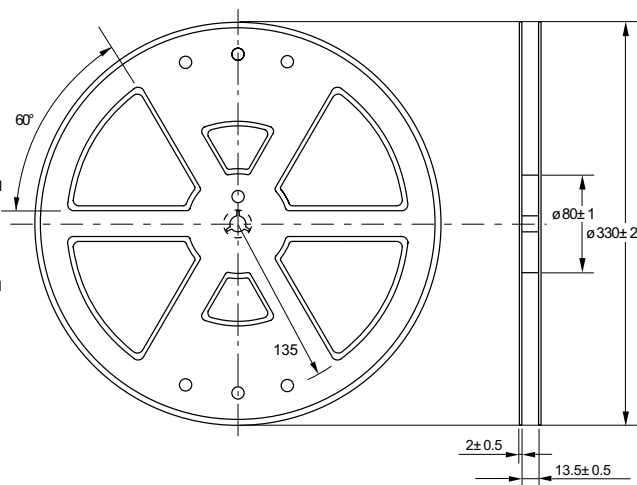
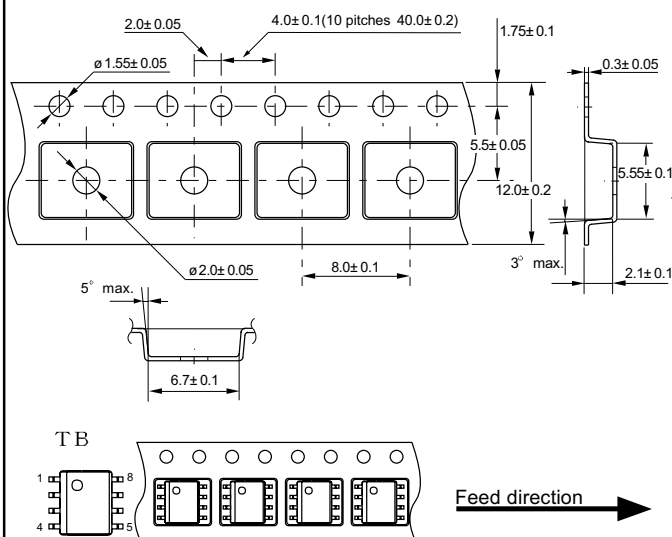
FJ008-B 990531

● Dimensions

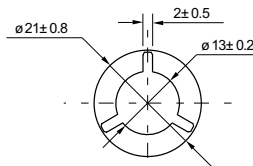


No. : F J 0 0 8 - B - P - S D - 1 . 0

● Reel Specifications



No. : F J 0 0 8 - A - C - S D - 1 . 0



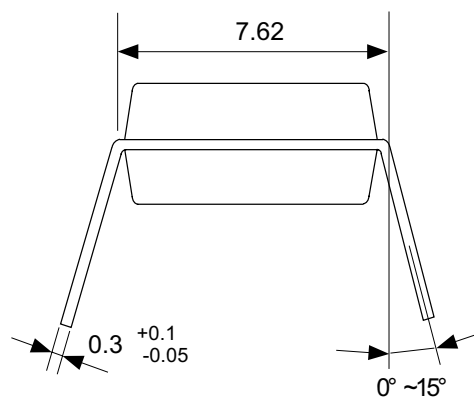
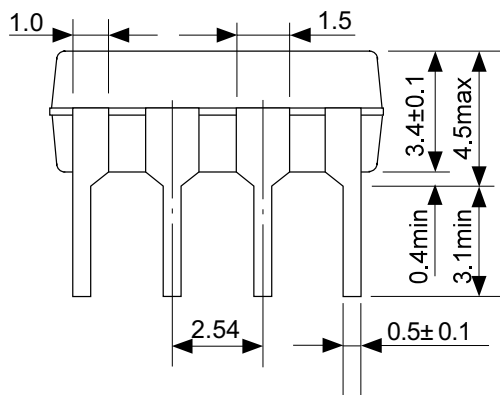
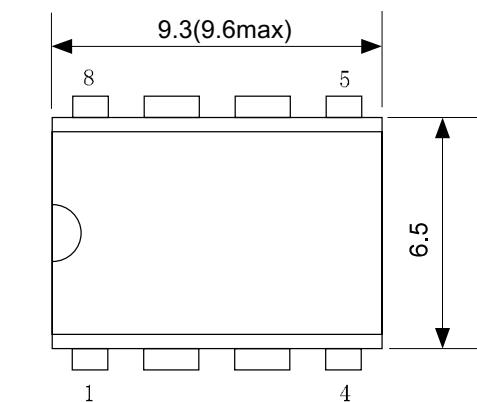
No. : F J 0 0 8 - A - R - S D - 1 . 0

■ 8-pin DIP

DP008-A 990531

● Dimensions

Unit:mm

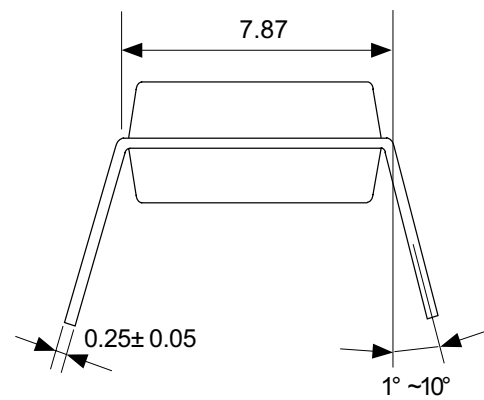
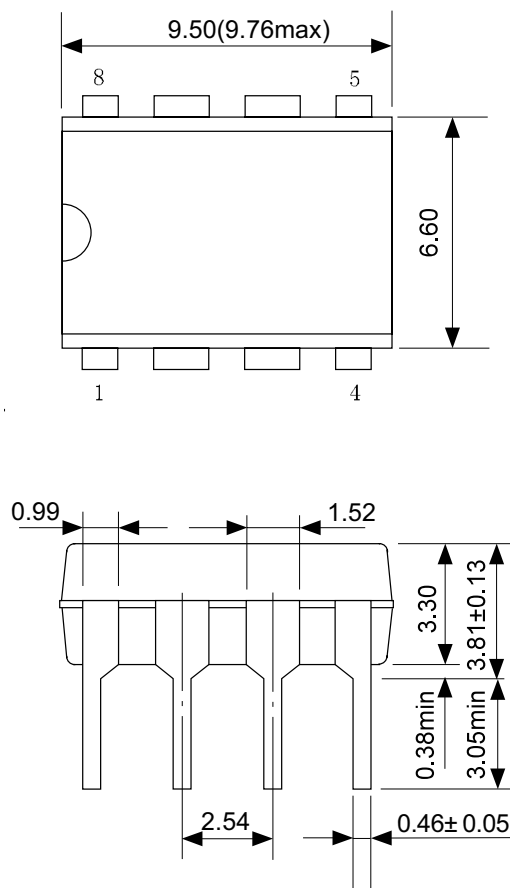


No. : DP008-A-P-SD-1.0

■ 8-pin DIP

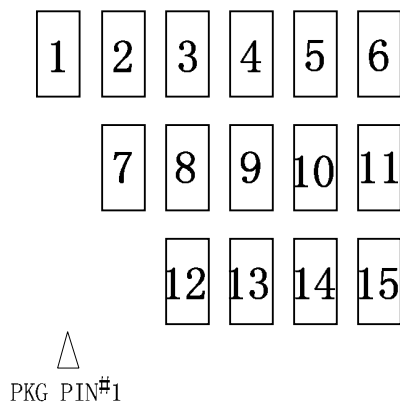
● Dimensions

Unit:mm



No. : DP008-B-P-SD-1.0

● 8-pin DIP (Both type A and B)

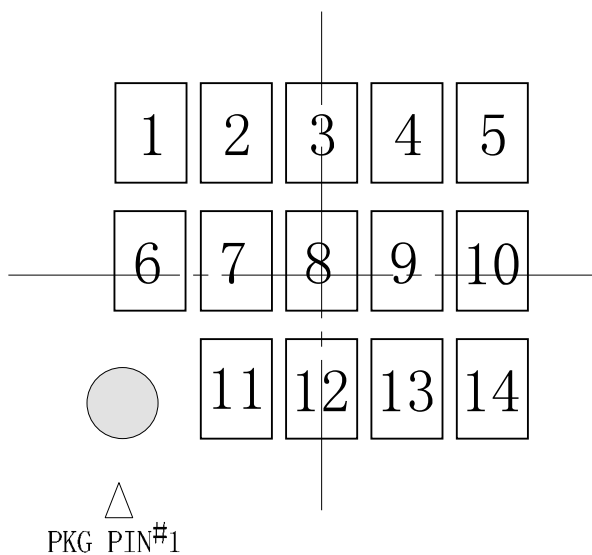


1 to 8 : Product code
 9 : Assembly mark
 1 0 : Year of assembly
 1 1 : Month of assembly
 1 2 to 1 5 : Lot No.

Numbers 1, 2, 7, 8, and/or 12 include blanks depending on product type.

No. : D P 0 0 8 - A - M - S D - 1 . 0

● 8-pin SOP (Both type A and B)



1 to 7 : Product code
 8 : Assembly mark
 9 : Year of assembly
 1 0 : Month of assembly
 1 1 to 1 4 : Lot No.

Numbers 1, 6, 7, and/or 11 include blanks depending on product type.

No. : F I 0 0 8 - A - M - S D - 1 . 0

- The information herein is subject to change without notice.
- Seiko Instruments Inc. is not responsible for any problems caused by circuits or other diagrams described herein whose industrial properties, patents or other rights belong to third parties. The application circuit examples explain typical applications of the products, and do not guarantee any mass-production design.
- When the products described herein include Strategic Products (or Service) subject to regulations, they should not be exported without authorization from the appropriate governmental authorities.
- The products described herein cannot be used as part of any device or equipment which influences the human body, such as physical exercise equipment, medical equipment, security system, gas equipment, vehicle or airplane, without prior written permission of Seiko Instruments Inc.