

world leader in high performance signal processing



Login

Analog Devices Wiki

Enter keywords or part #

- [Resources and Tools](#)
 - [Evaluation Boards & Kits](#)
 - [FPGA Reference Designs](#)
 - [Quick Start Guides](#)
 - [Tools & Software](#)
- [Wiki Help](#)
 - [Help](#)
 - [About Wiki](#)
 - [Playground](#)
 - [Wiki Site Map](#)
- [Design Support](#)
 - [EngineerZone \[http://ez.analog.com/\]](http://ez.analog.com/)
 - [Circuits from the Lab \[http://www.analog.com/circuits\]](http://www.analog.com/circuits)
 - [Product Selection Guides \[http://www.analog.com/en/content/psearch_landing/fca.html\]](http://www.analog.com/en/content/psearch_landing/fca.html)

[ReadView Source](#) | [History](#)

[Print](#) | [Export](#) [Open Office](#) | [PDF](#) | [RSS](#)

The most recent version of this page is a draft.
This version (08 Aug 2012 11:11) was **approved** by hmarais.
The Previously approved version (15 Jul 2012 12:16) is available.

This is an old revision of the document!

ezLINX™ iCoupler® Isolated Interface Development Environment

The ezLINX iCoupler Isolated Interface Development environment provides developers with a cost-effective, plug and play solution for evaluating eight physical Layer, digitally-isolated communication standards(USB, RS-422, RS-485, RS-232, CAN, SPI, I2C and LVDS). The Blackfin ADSP-BF548 processor is used to run the uCLinux operating system and allows for easy customization through the open source hardware and software platform. Development time is significantly reduced for embedded designers and system architects who are designing and evaluating isolated communication standards. The Interfaces on ezLINX use ADI's isolated transceivers with integrated iCoupler and isoPower® digital isolator technology.

Quick Start Installation Setup Guide

The following guides give a complete step-by-step guide for the initial setup of the ezLINX board, including software installation for the ezLINX application, driver installation and setting the IP address. Before starting the setup guide, check that you have all of the necessary items from the following list to complete the setup process:

Evaluation Kit Contents

EZLINX-IIIDE-EBZ Evaluation board
USB A to mini USB B Cable
Power supply
ezLINX Software DVD

Installation Instructions

Select the operating system you are using from the list:

[Windows XP Quick Start installation](#)

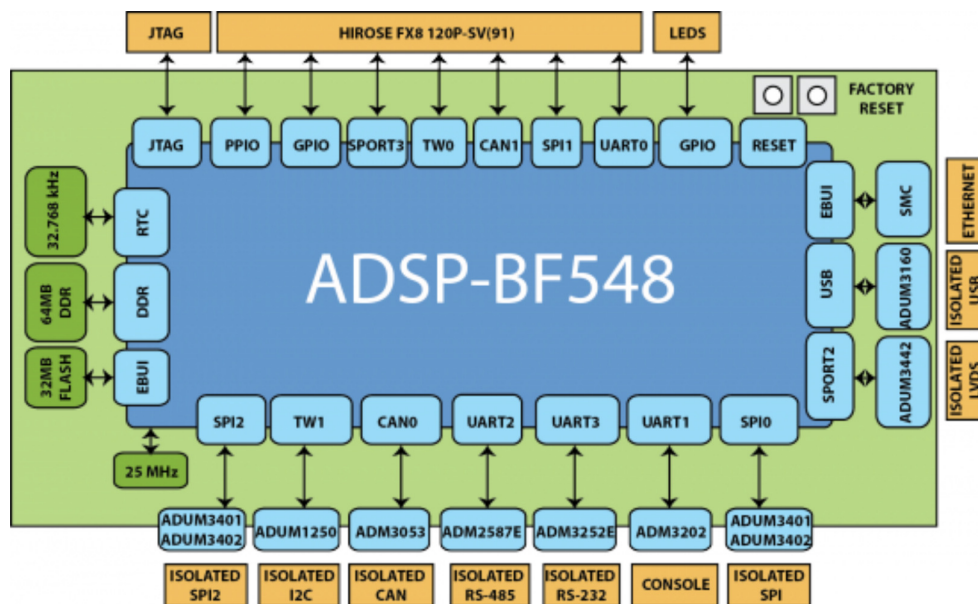
[Windows Vista 32-bit/64-bit Quick Start Installation](#)

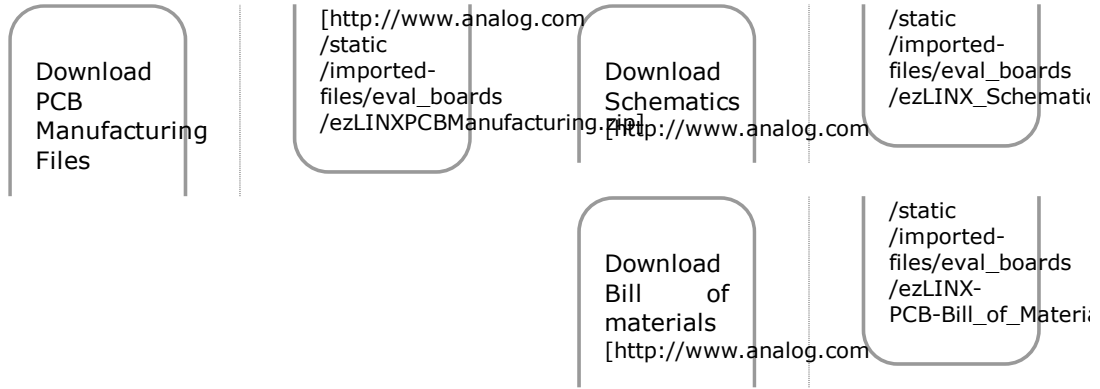
[Windows 7 32-bit/64-bit Quick Start Installation](#)

Hardware

The Hardware of the ezLINX iCoupler isolated interface development environment contains the ADSP-BF548 blackfin processor with 64MB of RAM and 32MB of Flash memory. The Isolated Physical layer communication standards are implemented using ADI's isolated transceivers with integrated iCoupler and isoPower technology. Routing between the various communication standards is implemented at the hardware level. Included are the following:

- [Isolated USB](#) using the ADuM3160 [<http://www.analog.com/en/interface/digital-isolators/adum3160/products/product.html>]
- [Isolated CAN](#) using the ADM3053 [<http://www.analog.com/en/interface/can/adm3053/products/product.html>] Signal and Power Isolated CAN transceiver
- [Isolated RS-485/RS-422](#) using the ADM2587E [<http://www.analog.com/en/interface/digital-isolators/adm2587e/products/product.html>] Signal and Power Isolated RS-485/RS-422 transceiver
- [Isolated RS-232](#) using the ADM3252E [<http://www.analog.com/en/interface/digital-isolators/adm3252e/products/product.html>] Signal and Power Isolated RS-232 transceiver
- [Isolated I2C](#) using the ADuM1250 [<http://www.analog.com/en/interface/digital-isolators/adum1250/products/product.html>] and ADuM5000 [<http://www.analog.com/en/interface/digital-isolators/ADuM5000/products/product.html>]
- [Isolated SPI](#) using the ADuM3401 [<http://www.analog.com/en/interface/digital-isolators/ADuM3401/products/product.html>], ADuM3402 [<http://www.analog.com/en/interface/digital-isolators/ADuM3402/products/product.html>] and ADuM5000 [<http://www.analog.com/en/interface/digital-isolators/ADuM5000/products/product.html>]
- [Isolated LVDS](#) using the ADuM3442 [<http://www.analog.com/en/interface/digital-isolators/ADuM3442/products/product.html>], ADuM5000 [<http://www.analog.com/en/interface/digital-isolators/ADuM5000/products/product.html>], ADN4663 [<http://www.analog.com/en/interface/lvds/adn4663/products/product.html>] and ADN4664 [<http://www.analog.com/en/interface/lvds/adn4664/products/product.html>]





The ezLINX™ Development Platform also includes the following:

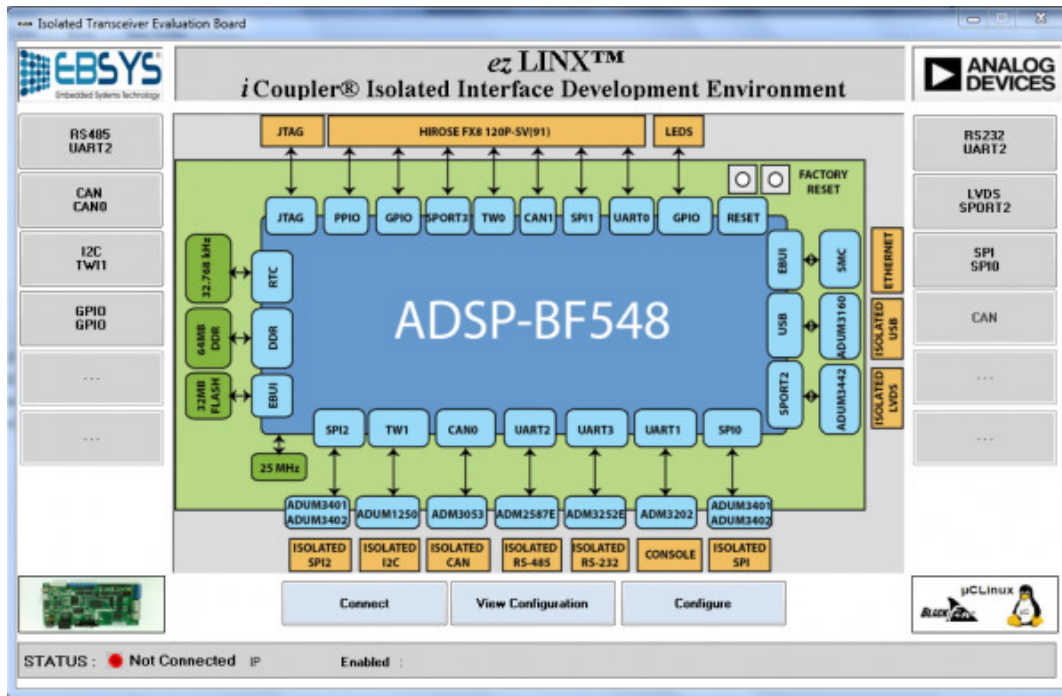
- [Hirose FX8 120P-SV\(91\) Extender Connector](#) for daughter board connections.
- [RS-232 DB-9 Console Connector](#)
- [1.2V, 2.5V, 3.3V, 5V Regulated Output Voltages](#)

A full list of jumper configurations for the ezLINX hardware can be found [here](#).

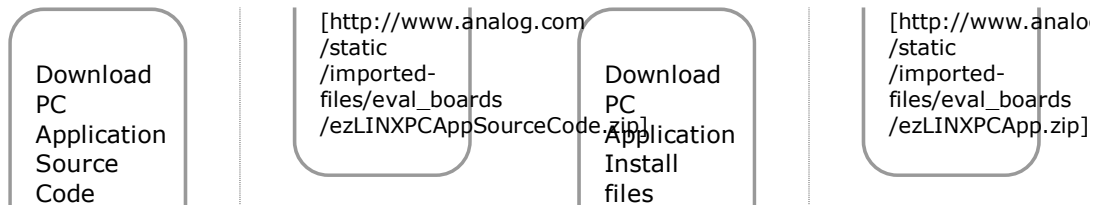
Software

Sample PC Application Software

The ADSP-BF548 Blackfin processor is running open source uCLinux kernel and sample application. The sample PC Application integrates with the ezLINX hardware platform via isolated USB, allowing for a complete plug and play evaluation and development experience with 8 isolated communication standards.



Sample PC



Application Software User guide

The sample PC Application is available for

- Windows XP
- Windows Vista
- Windows 7

[Software User Guide for the Sample PC Application.](#)

[Careers](#) | [Contact ADI](#) | [About ADI](#) | [Investor Relations](#) | [News Room](#) | [About This Site](#) | [Wiki Sitemap](#) | [简体中文](#) | [日本語](#) | [eNewsletters](#) | [Analog Dialogue](#)

[Find Analog Devices in Social Media](#) [Join Analog Devices on EngineerZone](#) [Follow Analog Devices on Twitter](#) [Visit Analog Devices on Facebook](#) [Follow us on Google+](#) [View Analog Devices on YouTube](#) [Join Analog Devices on LinkedIn](#) [RSS Feeds](#)

© 1995 - 2012 Analog Devices, Inc. and other contributors.