

NOTES:
 1. THE "LF" PRODUCTS MEET EUROPEAN UNION DIRECTIVES AND OTHER COUNTRY REGULATIONS AS DESCRIBED IN GS-22-008
 2. LEAD FREE OR RoHS DIRECTIVE LABELING TO BE PROVIDED AS PER GS-14-920 FOR RoHS COMPATIBLE VERSION.

PERFORMANCES CHARACTERISTICS
 VOLTAGE RATING : 250 VAC (rms)
 CURRENT RATING : 1,5 A AT 25 °C, 1 A AT 70 °C.
 INSULATION RESISTANCE : 1000 MΩ INITIAL, 100 MΩ MIN. AFTER TEST
 DIELECTRIC WITHSTANDING VOLTAGE : 1000 VAC (rms).
 CONTACT RESISTANCE : 15 mΩ MAX. INITIAL, 5 mΩ MAX. RISE OF INITIAL VALUE AFTER TEST.
 OPERATING TEMPERATURE* : -40 °C TO +125 °C.
 INSERTION FORCE : 1 N MAX./CONTACT.
 WITHDRAWAL FORCE : 0,2 N MIN./CONTACT.
 *DEPENDING ON THE CABLE, THE MAX. TEMPERATURE CAN BE LOWER. FOR STANDARD PVC INSULATED CABLE : 105 °C MAX.

CONSTRUCTION
 BODY MATERIAL : GLASS-REINFORCED THERMOPLASTIC (UL94V-0).
 CONTACT MATERIAL : PHOSPHOR BRONZE.
 CONTACT FINISH : Au OVER Ni IN CONTACT AREA.
 Sn/Pb ON I.D.C. TERMINAL FOR LEADED PRODUCTS.
 Sn (MATE TIN) ON I.D.C. TERMINAL FOR LEAD FREE PRODUCTS.
 Z0 : PERFORMANCE LEVEL PER DIN41612 CLASS 3
 Z1 : PERFORMANCE LEVEL PER DIN41612 CLASS 2
 E9 : PERFORMANCE LEVEL PER DIN41612 CLASS 1
 OTHERS : CONSULT FCI

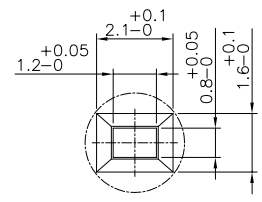
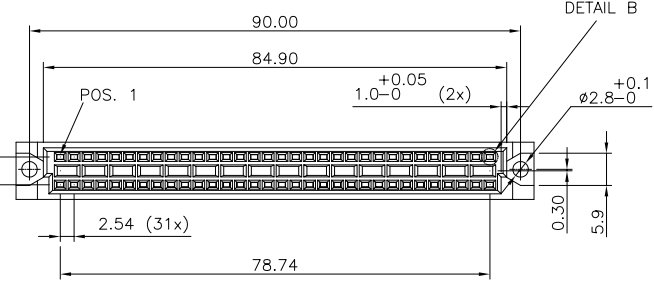
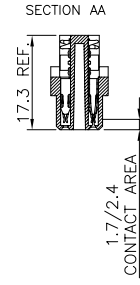
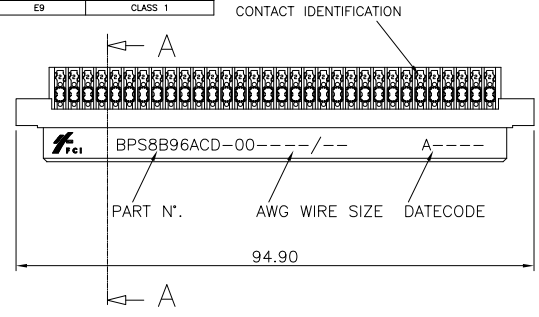
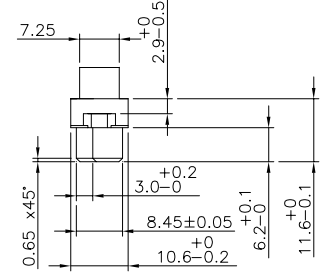
PART NUMBERS
 BPS8B96ACD000-- : CONNECTOR FOR WIRE SIZE AWG28, AWG30. (CONTACT IDENTIFICATION : 0).
 BPS8B96ACD200-- : CONNECTOR FOR WIRE SIZE AWG24, AWG26 (CONTACT IDENTIFICATION : 2).

AWG WIRE SIZE MARKING
 BPS8B96ACD000-- : 28/30.
 BPS8B96ACD000--LF : 28/30.
 BPS8B96ACD200-- : 24/26.
 BPS8B96ACD200--LF : 24/26.

DATECODE MARKING
 A + YEAR & WEEKCODE, EXAMPLE : A9950.

WIRE ACCOMMODATION		
PRODUCT NUMBER	WIRE SIZE	CONTACT IDENTIFICATION
BPS8B96ACD000--	AWG28/30	0
BPS8B96ACD200--	AWG24/26	2

CONTACT PLATING	
PLATING CODE	PERFORMANCE LEVEL PER DIN41612
Z0	CLASS 3
Z1	CLASS 2
E9	CLASS 1



mat'l. code		surface	tolerance	projection	product family						
SEE NOTE		ISO 1302	ISO 406 ISO 1101		BPS8						
ltr	ecn no	dr	date	tolerances unless otherwise specified	title						
A	F00819	DLE	2000-10-20	angles	ASSY BPS8						
B	I05-0123	MINI	2005-07-27	linear	96 POS. A,C LOADED						
C	I06-0067	MINI	2006-08-01	±1°	scale -						
		dr	D.LEGRAND	2000-10-20	dwg no						
		engr	J.F.NOTTEAU	2000-10-20	sheet 1 of 6						
		chr	RAKHEE GEORGE	2006-06-01	size						
		appd	RAKHEE GEORGE	2006-06-01	A3						
sheet	revision	C	C	C	C	C	C	C	C	type	Product Customer Drawing
index	sheet	1	2	3	4	5	6				

Copyright FCI FCconnect.com

PRODUCT NUMBER	BPS8B96A0D-00
----------------	---------------

WITH "LF" SUFFIX	LEAD FREE OR RoHS COMPATIBLE PRODUCT
WITHOUT SUFFIX	LEADED PRODUCT

WIRE ACCOMODATION		
PRODUCT NUMBER	WIRE SIZE	CONTACT IDENTIFICATION
BPS8B96A0D000--	AWG28/30	0
BPS8B96A0D200--	AWG24/26	2

CONTACT PLATING	
PLATING CODE	PERFORMANCE LEVEL PER DIN41612
Z0	CLASS 3
Z1	CLASS 2
E9	CLASS 1

NOTES:
 1. THE "LF" PRODUCTS MEET EUROPEAN UNION DIRECTIVES AND OTHER COUNTRY REGULATIONS AS DESCRIBED IN GS-22-008
 2. LEAD FREE OR RoHS DIRECTIVE LABELING TO BE PROVIDED AS PER GS-14-920 FOR RoHS COMPATIBLE VERSION.

PERFORMANCES CHARACTERISTICS
 VOLTAGE RATING : 250 VAC (rms)
 CURRENT RATING : 1.5 A AT 25 °C, 1 A AT 70 °C.
 INSULATION RESISTANCE : 1000MΩINITIAL, 100MΩMIN. AFTER TEST
 DIELECTRIC WITH-
 STANDING VOLTAGE : 1000 VAC (rms).
 CONTACT RESISTANCE : 15mΩMAX. INITIAL, 5mΩMAX. RISE OF INITIAL VALUE AFTER TEST.
 OPERATING TEMPERATURE*: -40 °C TO +125 °C.
 INSERTION FORCE : 1 N MAX./CONTACT.
 WITHDRAWAL FORCE : 0.2 N MIN./CONTACT.

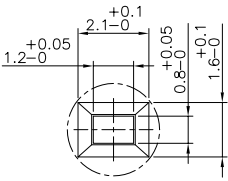
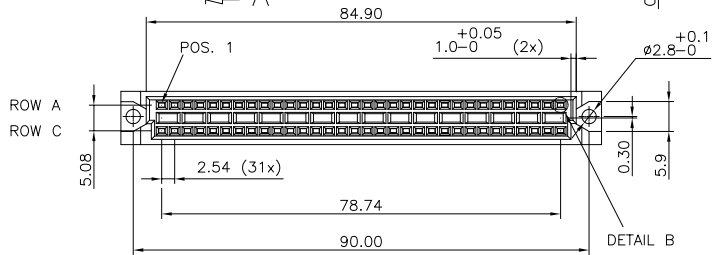
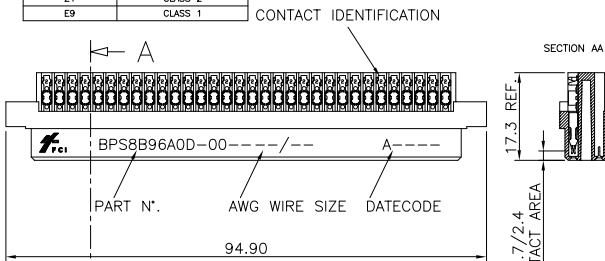
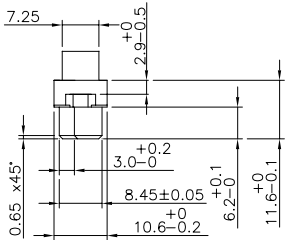
*DEPENDING ON THE CABLE, THE MAX. TEMPERATURE CAN BE LOWER. FOR STANDARD PVC INSULATED CABLE : 105 °C MAX.

CONSTRUCTION
 BODY MATERIAL : GLASS-REINFORCED THERMOPLASTIC (UL94V-0).
 CONTACT MATERIAL : PHOSPHOR BRONZE.
 CONTACT FINISH : Au OVER Ni IN CONTACT AREA
 SnPb ON I.D.C. TERMINAL FOR LEADED PRODUCTS.
 Sn (MATTE TIN) ON I.D.C. TERMINAL FOR LEAD FREE PRODUCTS.
 Z0 : PERFORMANCE LEVEL PER DIN41612 CLASS 3
 Z1 : PERFORMANCE LEVEL PER DIN41612 CLASS 2
 E9 : PERFORMANCE LEVEL PER DIN41612 CLASS 1
 OTHERS : CONSULT FCI

PART NUMBERS
 BPS8B96A0D000-- CONNECTOR FOR WIRE SIZE AWG28, AWG30. (CONTACT IDENTIFICATION : 0).
 BPS8B96A0D200-- CONNECTOR FOR WIRE SIZE AWG24, AWG26 (CONTACT IDENTIFICATION : 2).

AWG WIRE SIZE MARKING
 BPS8B96A0D000-- : 28/30
 BPS8B96A0D000--LF : 28/30
 BPS8B96A0D200-- : 24/26
 BPS8B96A0D200--LF : 24/26

DATECODE MARKING
 A + YEAR & WEEKCODE, EXAMPLE : A9950.



ONLY ROW A FULLY EQUIPPED WITH CONTACTS

mat'l. code	surface	tolerance	projection	product family																					
SEE NOTE	ISO 1302	ISO 406 ISO 1101		BPS8																					
lfr	ecn no.	dr	date	title																					
A	F00819	DLE	2000-10-20	ASSY BPS8																					
B	I05-0123	MINI	2005-07-27	96 POS. A LOADED																					
C	I06-0067	MINI	2006-08-01																						
<table border="1"> <tr> <td>dr</td> <td>D.LEGRAND</td> <td>2000-10-20</td> </tr> <tr> <td>enfr</td> <td>J.F.NOTTEAU</td> <td>2000-10-20</td> </tr> <tr> <td>chr</td> <td>RAKHEE GEORGE</td> <td>2006-06-01</td> </tr> <tr> <td>appd</td> <td>RAKHEE GEORGE</td> <td>2006-06-01</td> </tr> </table>				dr	D.LEGRAND	2000-10-20	enfr	J.F.NOTTEAU	2000-10-20	chr	RAKHEE GEORGE	2006-06-01	appd	RAKHEE GEORGE	2006-06-01	<table border="1"> <tr> <td>dwg no</td> <td>sheet 2 of 6</td> <td>size</td> </tr> <tr> <td>55359</td> <td></td> <td>A3</td> </tr> <tr> <td>type</td> <td colspan="2">Product Customer Drawing</td> </tr> </table>	dwg no	sheet 2 of 6	size	55359		A3	type	Product Customer Drawing	
dr	D.LEGRAND	2000-10-20																							
enfr	J.F.NOTTEAU	2000-10-20																							
chr	RAKHEE GEORGE	2006-06-01																							
appd	RAKHEE GEORGE	2006-06-01																							
dwg no	sheet 2 of 6	size																							
55359		A3																							
type	Product Customer Drawing																								
sheet index	revision sheet																								

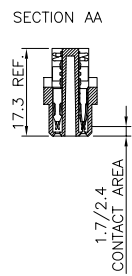
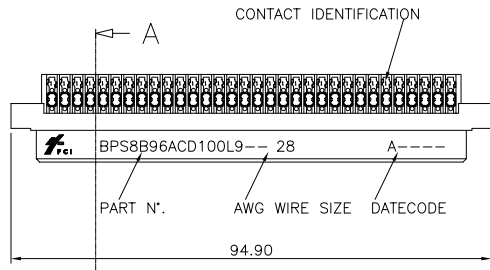
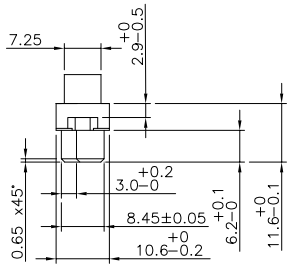
PRODUCT NUMBER BPS8B96ACD100L9

PRODUCT NUMBER BPS8B96ACD100L9LF

LEADED PRODUCT

LEAD FREE OR RoHS COMPATIBLE PRODUCT

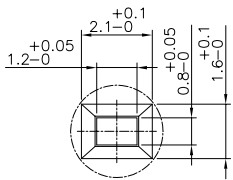
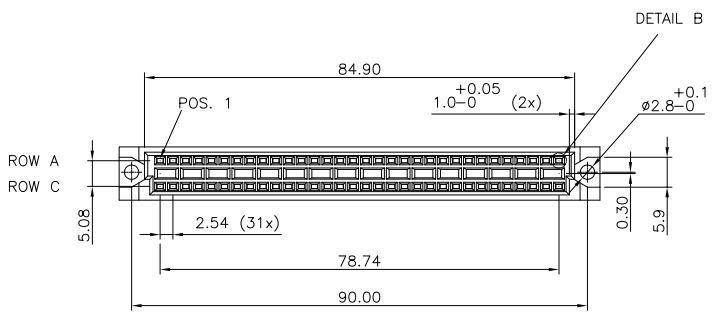
NOTES:
 1. THE "LF" PRODUCTS MEET EUROPEAN UNION DIRECTIVES AND OTHER COUNTRY REGULATIONS AS DESCRIBED IN GS-23-008
 2. LEAD FREE OR RoHS DIRECTIVE LABELING TO BE PROVIDED AS PER GS-14-920 FOR RoHS COMPATIBLE VERSION.



PERFORMANCES CHARACTERISTICS
 VOLTAGE RATING : 250 VAC (rms)
 CURRENT RATING : 1.5 A AT 25 °C, 1 A AT 70 °C
 INSULATION RESISTANCE : 1000MΩINITIAL, 100MΩMIN. AFTER TEST.
 DIELECTRIC WITH-
 STANDING VOLTAGE : 1000 VAC (rms).
 CONTACT RESISTANCE : 15mΩMAX. INITIAL, 5mΩMAX. RISE OF INITIAL VALUE AFTER TEST.
 OPERATING TEMPERATURE*: -40 °C TO +125 °C.
 INSERTION FORCE : 1 N MAX./CONTACT.
 WITHDRAWAL FORCE : 0.2 N MIN./CONTACT.
 *DEPENDING ON THE CABLE, THE MAX. TEMPERATURE CAN BE LOWER. FOR STANDARD PVC INSULATED CABLE : 105 °C MAX.

CONSTRUCTION
 BODY MATERIAL : GLASS-REINFORCED THERMOPLASTIC (UL94V-0).
 CONTACT MATERIAL : PHOSPHOR BRONZE.
 CONTACT FINISH : 1.25 µm Au MIN. OVER 2 µm Ni MIN. IN CONTACT AREA
 Sn (MATTE TIN) ON I.D.C. TERMINAL FOR LEAD FREE PRODUCTS
 Sh-Pb ON I.D.C. TERMINAL FOR LEADED PRODUCTS
 CABLE : 3M FLEXIBLE TWISTED PAIR CABLE (WIRES & CABLE) TYPE 3782 PER UL STYLE/20488 OR TYPE 3783 PER UL STYLE/2935.

PART NUMBERS
 BPS8B96ACD100L9---CONNECTOR FOR WIRE SIZE AWG28 (CONTACT IDENTIFICATION : 1).
AWG WIRE SIZE MARKING
 BPS8B96ACD100L9 : 28
 BPS8B96ACD100L9LF : 28
DATECODE MARKING
 A + YEAR & WEEKCODE, EXAMPLE : A9950.

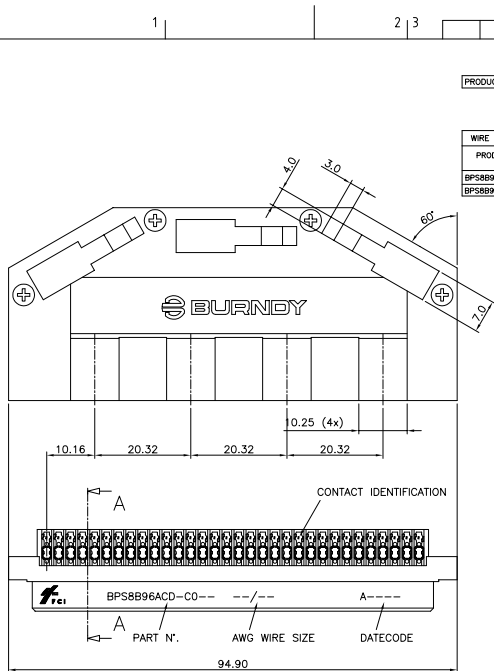


mat'l. code		surface		tolerance		projection		product family	
SEE NOTE		ISO 1302		ISO 406 ISO 1101		mm		BPS8	
ltr	ecn no.	dr	date	tolerances unless otherwise specified		mm		title	
A	F00819	DLE	2000-10-20	angles	linear	0.1±0.2		ASSY BPS8	
B	I05-0123	MINI	2005-07-27	±1°		0.01±0.1		96 POS. A,C LOADED	
C	I06-0067	MINI	2006-08-01			scale -		dwg no	
		dr		D.LEGRAND		2000-10-20		sheet 3 of 6	
		enrg		J.F.NOTTEAU		2000-10-20		size	
		chr		RAKHEE GEORGE		2006-06-01		A3	
		appd		RAKHEE GEORGE		2006-06-01		type	
sheet index		revision sheet						Product Customer Drawing	



Copyright FCI

form: A3



PRODUCT NUMBER	BPS8B96ACD-C0----	
	WITH "LF" SUFFIX	LEAD FREE OR RHFS COMPATIBLE PRODUCT
	WITHOUT SUFFIX	LEADED PRODUCT

WIRE ACCOMMODATION		
PRODUCT NUMBER	WIRE SIZE	CONTACT IDENTIFICATION
BPS8B96ACD0C0----	AWG28/30	0
BPS8B96ACD2C0----	AWG24/26	2

CONTACT PLATING	
PLATING CODE	PERFORMANCE LEVEL PER DIN41612
Z0	CLASS 3
Z1	CLASS 2
E9	CLASS 1

NOTES:
 1. THE "LF" PRODUCTS MEET EUROPEAN UNION DIRECTIVES AND OTHER COUNTRY REGULATIONS AS DESCRIBED IN GS-22-008
 2. LEAD FREE OR RHFS DIRECTIVE LABELING TO BE PROVIDED AS PER GS-14-920 FOR RHFS COMPATIBLE VERSION.

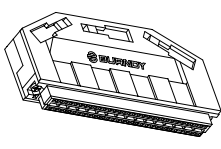
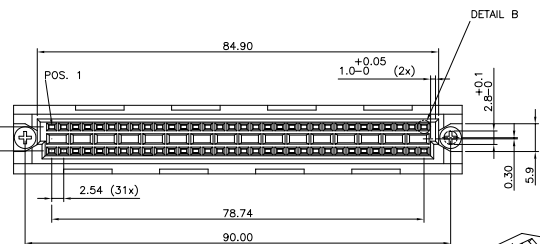
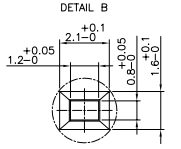
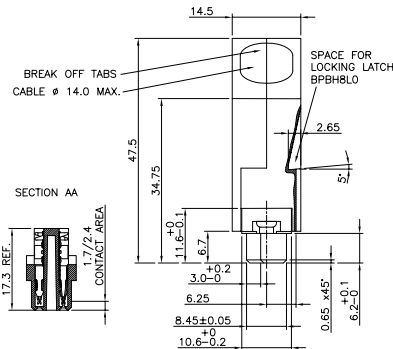
PERFORMANCES CHARACTERISTICS
 VOLTAGE RATING : 250 VAC (rms)
 CURRENT RATING : 1,5 A AT 25 °C, 1 A AT 70 °C
 INSULATION RESISTANCE : 1000MΩINITIAL, 100MΩMIN. AFTER TEST
 DIELECTRIC WITHSTANDING VOLTAGE : 1000 VAC (rms)
 CONTACT RESISTANCE : 15mΩMAX. INITIAL, 5mΩMAX. RISE OF INITIAL VALUE AFTER TEST.
 OPERATING TEMPERATURE: -40 °C TO +125 °C
 INSERTION FORCE : 1 N MAX./CONTACT
 WITHDRAWAL FORCE : 0,2 N MIN./CONTACT
 *DEPENDING ON THE CABLE, THE MAX. TEMPERATURE CAN BE LOWER. FOR STANDARD PVC INSULATED CABLE : 105 °C MAX.

CONSTRUCTION
 BODY MATERIAL : GLASS-REINFORCED THERMOPLASTIC (UL94V-0)
 COVER MATERIAL : POLYPHENYLENE (PPO), COLOUR : BLACK.
 CONTACT MATERIAL : PHOSPHOR BRONZE.
 CONTACT FINISH : Au OVER Ni IN CONTACT AREA
 SnPb ON I.D.C. TERMINAL FOR LEADED PRODUCTS.
 Sn (MATTE TIN) ON I.D.C. TERMINAL FOR LEAD FREE PRODUCTS.
 Z0 : PERFORMANCE LEVEL PER DIN41612 CLASS 3
 Z1 : PERFORMANCE LEVEL PER DIN41612 CLASS 2
 E9 : PERFORMANCE LEVEL PER DIN41612 CLASS 1
 OTHERS : CONSULT FCI
 TIE-WRAP : OPTIONAL (PART N°. TF4)

PART NUMBERS
 BPS8B96ACD0C0----- CONNECTOR FOR WIRE SIZE AWG28, AWG30. (CONTACT IDENTIFICATION : 0).
 BPS8B96ACD2C0----- CONNECTOR FOR WIRE SIZE AWG24, AWG26 (CONTACT IDENTIFICATION : 2).

AWG WIRE SIZE MARKING
 BPS8B96ACD0C0---- : 28/30.
 BPS8B96ACD0C0----LF : 28/30.
 BPS8B96ACD2C0---- : 24/26.
 BPS8B96ACD2C0----LF : 24/26.

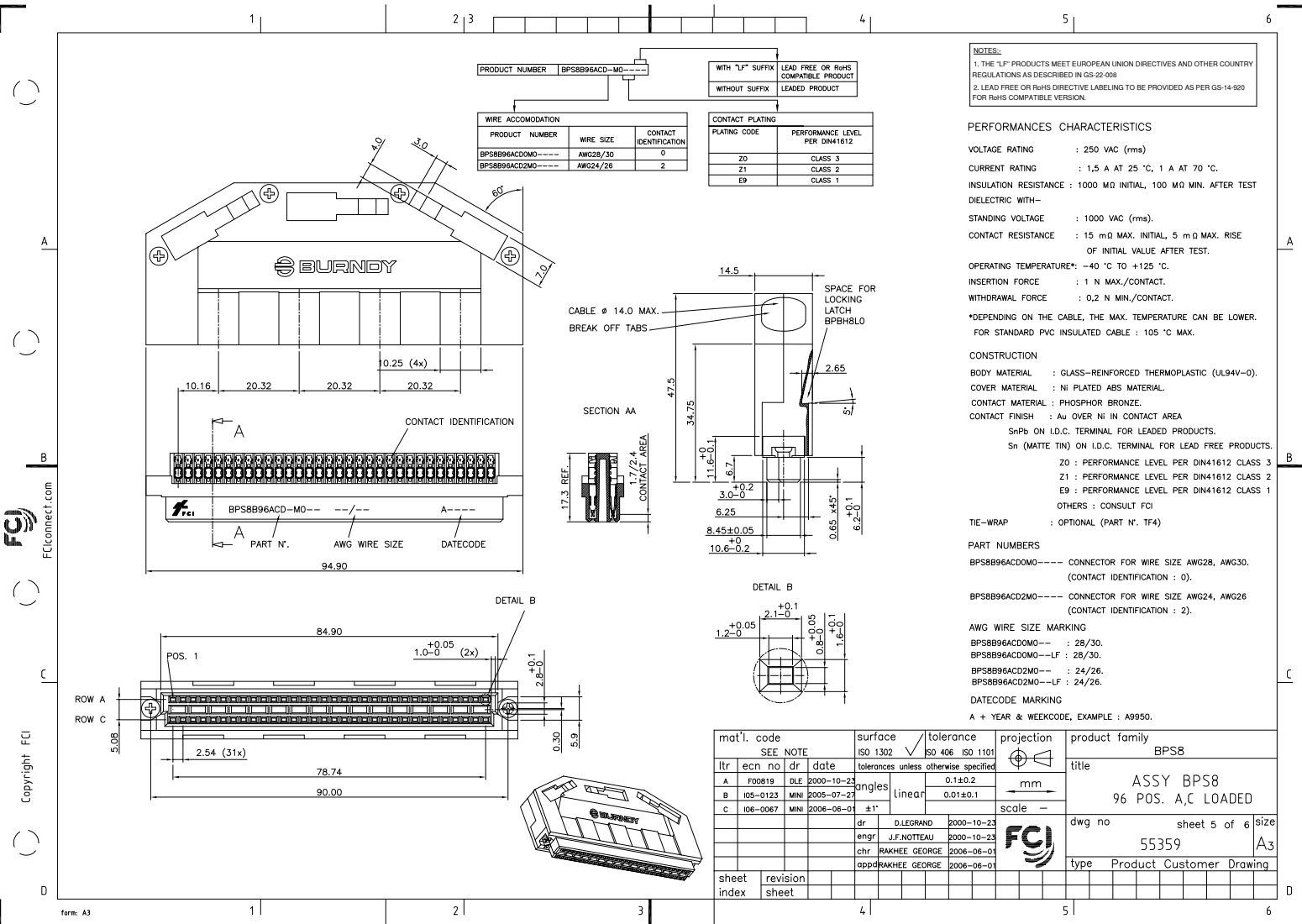
DATECODE MARKING
 A + YEAR & WEEKCODE, EXAMPLE : A9950.



mat'l. code	surface	tolerance	projection	product family
SEE NOTE	ISO 1302	ISO 406 ISO 1101		BPS8
tr	ecn no	dr	date	tolerances unless otherwise specified
A	F00819	DLE	2000-10-23	angles
B	I05-0123	MINI	2005-07-27	linear
C	I06-0067	MINI	2006-08-01	±1'
		dr	D.LEGRAND	2000-10-23
		enrg	J.F.NOTTEAU	2000-10-23
		chr	RAKHEE GEORGE	2006-06-01
		appd	RAKHEE GEORGE	2006-06-01

title	ASSY BPS8 96 POS. A,C LOADED	
dwg no	55359	sheet 4 of 6
type	Product Customer Drawing	size A3

sheet index	revision sheet



PRODUCT NUMBER	WIRE ACCOMMODATION	
BPS8B96ACD-M0----	PRODUCT NUMBER	
	WIRE SIZE	
	CONTACT IDENTIFICATION	
BPS8B96ACD0M0----	AWG28/30	0
BPS8B96ACD2M0----	AWG24/26	2

CONTACT PLATING	PERFORMANCE LEVEL PER DIN1612
Z0	CLASS 3
Z1	CLASS 2
E9	CLASS 1

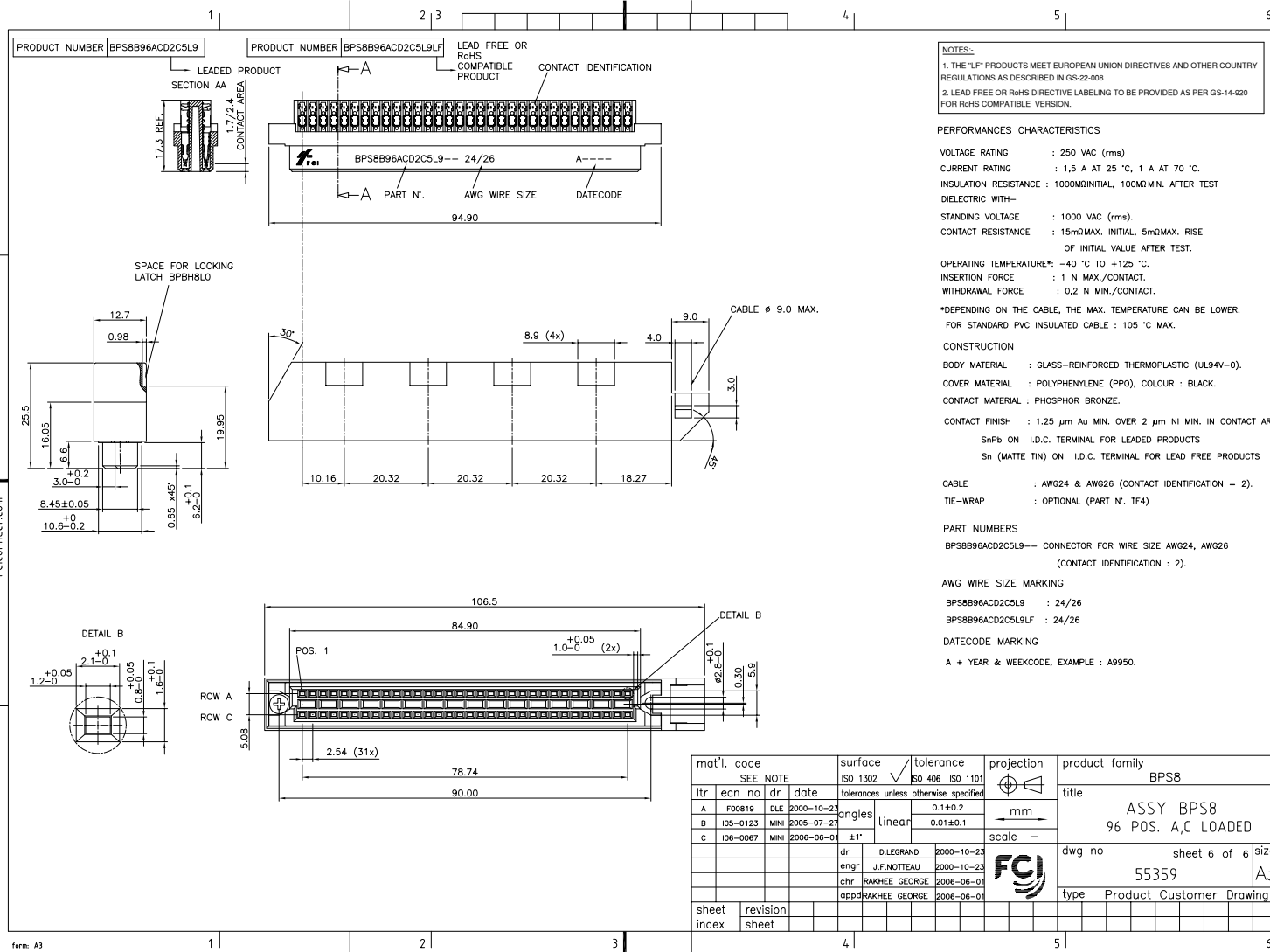
NOTES:
 1. THE "LF" PRODUCTS MEET EUROPEAN UNION DIRECTIVES AND OTHER COUNTRY REGULATIONS AS DESCRIBED IN GS-22-008
 2. LEAD FREE OR R6HS DIRECTIVE LABELING TO BE PROVIDED AS PER GS-14-920 FOR R6HS COMPATIBLE VERSION.

PERFORMANCES CHARACTERISTICS
 VOLTAGE RATING : 250 VAC (rms)
 CURRENT RATING : 1,5 A AT 25 °C, 1 A AT 70 °C.
 INSULATION RESISTANCE : 1000 MΩ INITIAL, 100 MΩ MIN. AFTER TEST
 DIELECTRIC WITH-
 STANDING VOLTAGE : 1000 VAC (rms).
 CONTACT RESISTANCE : 15 mΩ MAX. INITIAL, 5 mΩ MAX. RISE OF INITIAL VALUE AFTER TEST.
 OPERATING TEMPERATURE*: -40 °C TO +125 °C.
 INSERTION FORCE : 1 N MAX./CONTACT.
 WITHDRAWAL FORCE : 0,2 N MIN./CONTACT.
 *DEPENDING ON THE CABLE, THE MAX. TEMPERATURE CAN BE LOWER. FOR STANDARD PVC INSULATED CABLE : 105 °C MAX.

CONSTRUCTION
 BODY MATERIAL : GLASS-REINFORCED THERMOPLASTIC (UL94V-0).
 COVER MATERIAL : NI PLATED ABS MATERIAL.
 CONTACT MATERIAL : PHOSPHOR BRONZE.
 CONTACT FINISH : Au OVER Ni IN CONTACT AREA
 SnPb ON I.D.C. TERMINAL FOR LEADED PRODUCTS.
 Sn (MATTE TIN) ON I.D.C. TERMINAL FOR LEAD FREE PRODUCTS.
 Z0 : PERFORMANCE LEVEL PER DIN1612 CLASS 3
 Z1 : PERFORMANCE LEVEL PER DIN1612 CLASS 2
 E9 : PERFORMANCE LEVEL PER DIN1612 CLASS 1
 OTHERS : CONSULT FCI

TIE-WRAP : OPTIONAL (PART N°. TF4)
PART NUMBERS
 BPS8B96ACD0M0---- CONNECTOR FOR WIRE SIZE AWG28, AWG30. (CONTACT IDENTIFICATION : 0).
 BPS8B96ACD2M0---- CONNECTOR FOR WIRE SIZE AWG24, AWG26 (CONTACT IDENTIFICATION : 2).
AWG WIRE SIZE MARKING
 BPS8B96ACD0M0-- : 28/30.
 BPS8B96ACD0M0--LF : 28/30.
 BPS8B96ACD2M0-- : 24/26.
 BPS8B96ACD2M0--LF : 24/26.
DATECODE MARKING
 A + YEAR & WEEKCODE, EXAMPLE : A9950.

mat'l. code	SEE NOTE	surface	ISO 1302	tolerance	ISO 406 ISO 1101	projection	product family	BPS8
ltr	ecn no	dr	date	tolerances unless otherwise specified		mm	title	ASSY BPS8 96 POS. A,C LOADED
A	F00819	DLE	2000-10-23	angles	linear	0.1±0.2	dwg no	55359
B	I05-0123	MINI	2005-07-27	±1'		0.01±0.1	sheet 5 of 6	A3
C	I06-0067	MINI	2006-08-01				type	Product Customer Drawing
		dr	D.LEGRAND	2000-10-23				
		enrg	J.F.NOTTEAU	2000-10-23				
		chr	RAKHEE GEORGE	2006-06-01				
		appd	RAKHEE GEORGE	2006-06-01				
sheet	revision							
index	sheet							



NOTES:
 1. THE "LF" PRODUCTS MEET EUROPEAN UNION DIRECTIVES AND OTHER COUNTRY REGULATIONS AS DESCRIBED IN GS-22-008
 2. LEAD FREE OR RoHS DIRECTIVE LABELING TO BE PROVIDED AS PER GS-14-020 FOR RoHS COMPATIBLE VERSION.

PERFORMANCES CHARACTERISTICS
 VOLTAGE RATING : 250 VAC (rms)
 CURRENT RATING : 1,5 A AT 25 °C, 1 A AT 70 °C.
 INSULATION RESISTANCE : 1000MΩINITIAL, 100MΩ MIN. AFTER TEST
 DIELECTRIC WITH-
 STANDING VOLTAGE : 1000 VAC (rms).
 CONTACT RESISTANCE : 15mΩMAX. INITIAL, 5mΩMAX. RISE OF INITIAL VALUE AFTER TEST.
 OPERATING TEMPERATURE*: -40 °C TO +125 °C.
 INSERTION FORCE : 1 N MAX./CONTACT.
 WITHDRAWAL FORCE : 0,2 N MIN./CONTACT.

*DEPENDING ON THE CABLE, THE MAX. TEMPERATURE CAN BE LOWER.
 FOR STANDARD PVC INSULATED CABLE : 105 °C MAX.

CONSTRUCTION
 BODY MATERIAL : GLASS-REINFORCED THERMOPLASTIC (UL94V-0).
 COVER MATERIAL : POLYPHENYLENE (PPD), COLOUR : BLACK.
 CONTACT MATERIAL : PHOSPHOR BRONZE.

CONTACT FINISH : 1.25 μm Au MIN. OVER 2 μm Ni MIN. IN CONTACT AREA
 SnPb ON I.D.C. TERMINAL FOR LEADED PRODUCTS
 Sn (MATTE TIN) ON I.D.C. TERMINAL FOR LEAD FREE PRODUCTS

CABLE : AWG24 & AWG26 (CONTACT IDENTIFICATION = 2).
 TIE-WRAP : OPTIONAL (PART N°. TF4)

PART NUMBERS
 BPS8B96ACD2C5L9--- CONNECTOR FOR WIRE SIZE AWG24, AWG26 (CONTACT IDENTIFICATION : 2).

AWG WIRE SIZE MARKING
 BPS8B96ACD2C5L9 : 24/26
 BPS8B96ACD2C5L9LF : 24/26

DATECODE MARKING
 A + YEAR & WEEKCODE, EXAMPLE : A9950.

lfr	ecn no	dr	date	surface	tolerance	projection	product family
A	F00819	DLE	2000-10-23	ISO 1302	ISO 406 ISO 1101		BPS8
B	I05-0123	MINI	2005-07-27	tolerances unless otherwise specified	0.1±0.2	mm	title
C	I06-0067	MINI	2006-08-01	angles	0.01±0.1	scale -	ASSY BPS8 96 POS. A,C LOADED
				linear	±1°		dwg no
				dr	D.LEGRAND	2000-10-23	sheet 6 of 6
				engr	J.F.NOTTEAU	2000-10-23	size
				chr	RAKHEE GEORGE	2006-06-01	A3
				appd	RAKHEE GEORGE	2006-06-01	type
							Product Customer Drawing
sheet index	revision sheet						