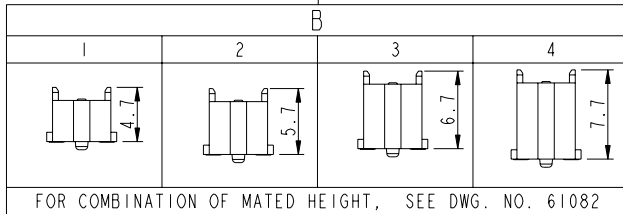


61083-

AA	B	C	D	E	FF
----	---	---	---	---	----

AA	NO. OF POSITIONS
04	2X20
06	2X30
08	2X40
10	2X50
12	2X60
14	2X70
16	2X80
18	2X90
20	2X100



E	PACKAGING
0	TUBE WITHOUT METAL CAP
2	T&R WITH METAL CAP
9	TUBE WITH METAL CAP
6	T&R WITHOUT METAL CAP (WITH KAPTON TAPE)
7	T&R WITH PLASTIC PICK UP CAP. (SEE NOTE 11)

D	FEATURE	HOLD DOWN
0	YES	NO
2	NO	NO

NOTE:

- MATERIAL:
HOUSING: G.F. LCP, UL94-V0
TERMINAL: BRASS
- PLATING:
AS SHOWN IN TABLE.
- SEE GS-12-547 FOR PRODUCT SPEC.
- SEE GS-14-551 AND GS-14-816 FOR PACKAGING SPEC.
- PACKAGING OPTION 2: NOT ALL SIZES ARE AVAILABLE. CHECK WITH FACTORY.
- THIS PRODUCT MEETS THE EUROPEAN UNION DIRECTIVES AND OTHER COUNTRY REGULATIONS AS DESCRIBED IN GS-22-008.
- THE HOUSING WILL WITHSTAND EXPOSURE UP TO 260° PEAK TEMPERATURE FOR 10 SECONDS IN A CONVECTION, INFRA-RED OR VAPOR PHASE REFLOW OVEN.
- PLATING OPTION "4" IS LEADFREE ALTERNATIVE FOR OPTION "0", AND OPTION "6" IS LEADFREE ALTERNATIVE FOR OPTION "1".
- HIGH PRECISION COPLANARITY IS AVAILABLE FOR 2X80 TO 2X100 POS, ALL HEIGHTS. PLS REFER TO PRINT 10069525.
- A SYMBOL WILL BE NEXT TO ANY DIMENSION, VIEW OR NOTE WHICH HAS BEEN MODIFIED WITH THE CURRENT DRAWING REVISION.
- PLASTIC PICK UP CAP OPTION IS ONLY AVAILABLE TO P/N: 61083-043607LF.

C	PLATING	FF
0	GOLD 0.2um MIN. / TIN LEAD NICKEL UNDERPLATE OVERALL 1.27um MIN	NONE
1	GOLD FLASH (0.1um MIN) OVER PALLADIUM-NICKEL 0.76um MIN / TIN LEAD NICKEL UNDERPLATE OVERALL 1.27um.	NONE
4	GOLD 0.2um MIN / PURE MATT TIN NICKEL UNDERPLATE OVERALL 1.27um. (LEADFREE PLATING)	LF (NOTE 6 & 8)
5	GOLD 0.38um MIN / MATT PURE TIN NICKEL UNDERPLATE OVERALL 1.27um MIN (LEADFREE PLATING)	LF (NOTE 6 & 8)
6	GOLD FLASH (0.1um MIN) OVER PALLADIUM-NICKEL 0.76um MIN / PURE MATT TIN NICKEL UNDERPLATE OVERALL 1.27um. (LEADFREE PLATING)	LF (NOTE 6 & 8)

spec ref	dr	MAGGIE WU	1999-03-24	projection	mm	size	A3	scale	3:1
tolerance std	eng	YU WEN CHU	1999-03-24	chr	M CHEONG	2012-03-06	ecn no	ELX-S-010487	
	appr	CH TAN	2012-03-06	product family	BERGSTAK	-	rel level	RELEASE	
surface	linear	0.X	±0.2			BERGSTAK 0.8mm BTB		61083	
		0.XX	±0.15						
		0.XXX	±0.10						
	angular	0°	±2°	www.fci.com	cat. no.	-	Product - Customer Drw	sheet 1 of 6	rev

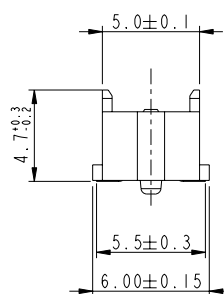
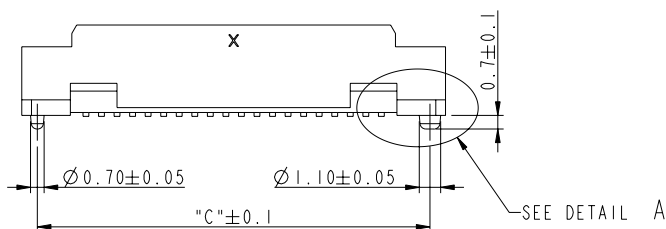
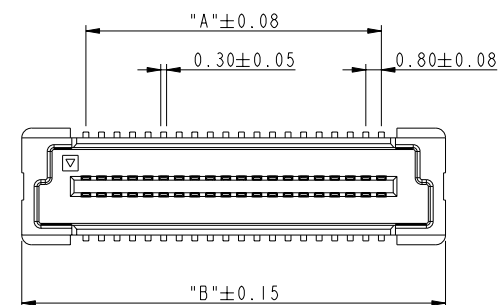
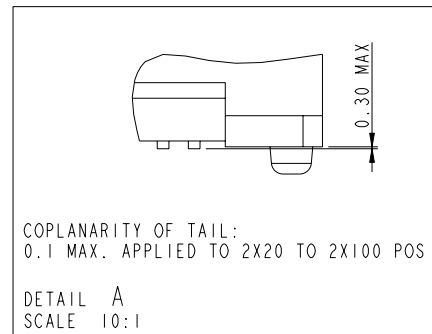
PDS: Rev:AE

STATUS:Released

Printed: Mar 09, 2012

Prod File - REV C - 2009-05-09

PRODUCT NO.	NO. OF POSITION	DIMENSION		
		A	B	C
61083-04 ***	2X20	15.2	21.8	20.2
61083-06 ***	2X30	23.2	29.8	28.2
61083-08 ***	2X40	31.2	37.8	36.2
61083-10 ***	2X50	39.2	45.8	44.2
61083-12 ***	2X60	47.2	53.8	52.2
61083-14 ***	2X70	55.2	61.8	60.2
61083-16 ***	2X80	63.2	69.8	68.2
61083-18 ***	2X90	71.2	77.8	76.2
61083-20 ***	2X100	79.2	85.8	84.2



PLUG 1

spec ref	dr	MAGGIE WU	1999-03-24	projection	mm	size	A3	scale	3:1
tolerance std	eng	YU WEN CHU	1999-03-24		mm	ecm no	ELX-S-010487		
TOLERANCES UNLESS OTHERWISE SPECIFIED	chr	M CHEONG	2012-03-06			rel level	RELEASE		
	appr	CH TAN	2012-03-06	product family	BERGSTAK	dwg no	61083	rev	AE
	surface	✓	linear	0.X	±0.2	BERGSTAK 0.8mm BTB PLUG ASSY			
			linear	0.XX	±0.15				
			linear	0.XXX	±0.10				
			angular	0°	±2°				

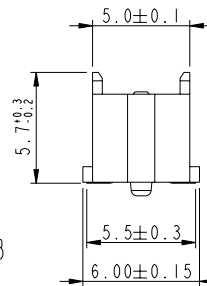
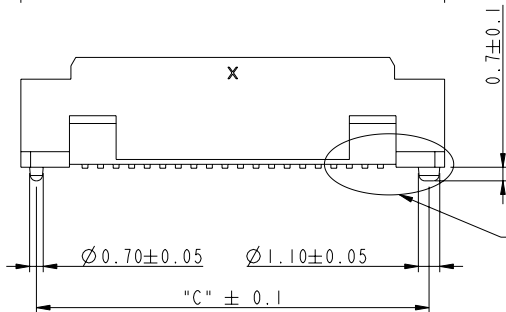
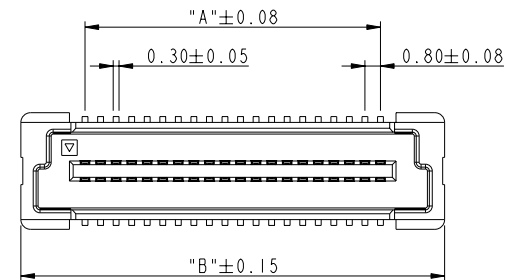
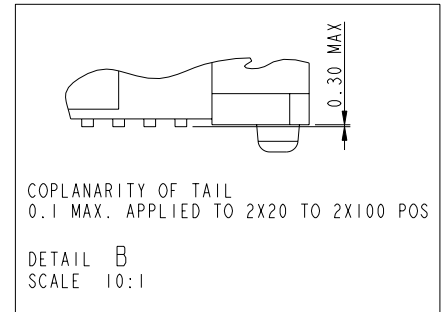
Prod File - REV C - 2009-06-09

PDS: Rev:AE

STATUS:Released

Printed: Mar 09, 2012

PRODUCT NO.	NO. OF POSITION	DIMENSION		
		A	B	C
61083-042***	2X20	15.2	21.8	20.2
61083-062***	2X30	23.2	29.8	28.2
61083-082***	2X40	31.2	37.8	36.2
61083-102***	2X50	39.2	45.8	44.2
61083-122***	2X60	47.2	53.8	52.2
61083-142***	2X70	55.2	61.8	60.2
61083-162***	2X80	63.2	69.8	68.2
61083-182***	2X90	71.2	77.8	76.2
61083-202***	2X100	79.2	85.8	84.2



PLUG 2

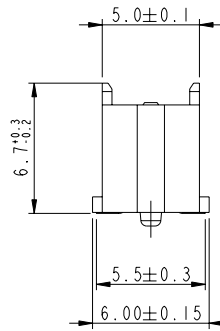
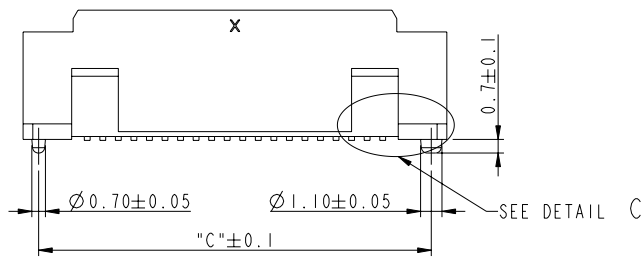
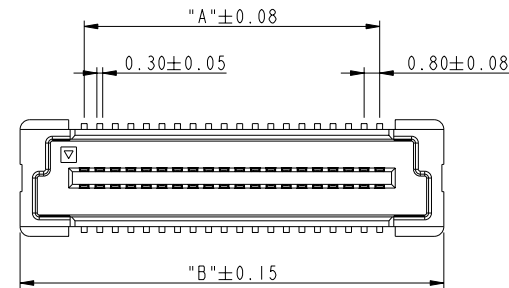
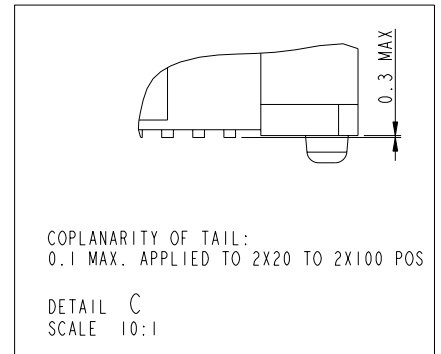
spec ref	dr	MAGGIE WU	1999-03-24	projection	mm	size	A3	scale	3:1
tolerance std	eng	YU WEN CHU	1999-03-24			ecm no	ELX-S-010487		
	chr	M CHEONG	2012-03-06			rel level	RELEASE		
	appr	CH TAN	2012-03-06	product family	BERGSTAK				
surface	linear	0.X	± 0.2			TITLE BERGSTAK 0.8mm BTB PLUG ASSY		dwg no 61083	
		0.XX	± 0.15						
		0.XXX	± 0.10						
	angular	0°	$\pm 2^\circ$	www.fci.com		cat. no.		Product - Customer Drw	
								sheet 3 of 6	

PDS: Rev:AE





STATUS:Released

Printed: Mar 09, 2012

PRODUCT NO.	NO. OF POSITION	DIMENSION		
		A	B	C
61083-043***	2X20	15.2	21.8	20.2
61083-063***	2X30	23.2	29.8	28.2
61083-083***	2X40	31.2	37.8	36.2
61083-103***	2X50	39.2	45.8	44.2
61083-123***	2X60	47.2	53.8	52.2
61083-143***	2X70	55.2	61.8	60.2
61083-163***	2X80	63.2	69.8	68.2
61083-183***	2X90	71.2	77.8	76.2
61083-203***	2X100	79.2	85.8	84.2



PLUG 3

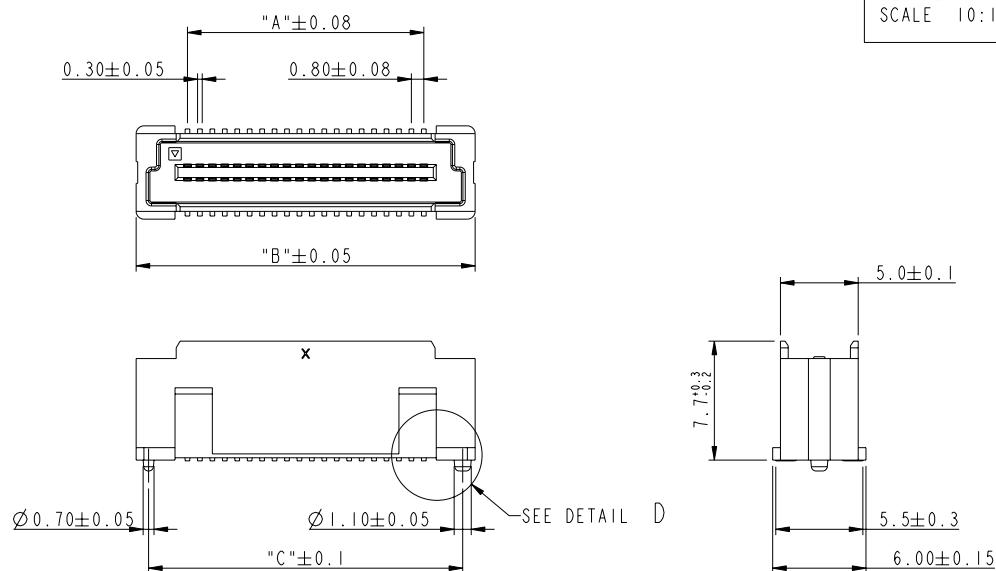
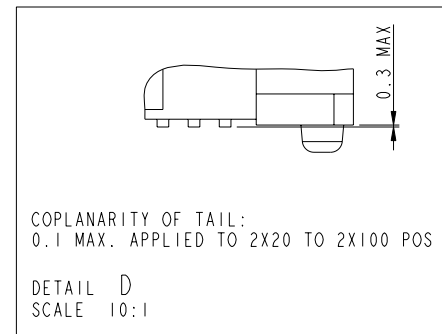
spec ref		dr		MAGGIE WU		1999-03-24		projection		mm		size		A3		scale			
tolerance std		eng		YU WEN CHU		1999-03-24						ecm no		ELX-S-010487		rel level		RELEASE	
TOLERANCES UNLESS OTHERWISE SPECIFIED		chr		M CHEONG		2012-03-06													
		appr		CH TAN		2012-03-06													
								product family		BERGSTAK									
		linear				title								61083		rev		AE	
						BERGSTAK 0.8mm BTB													
						PLUG ASSY													
		angular		0°		±2°		www.fci.com		cat. no.		-		Product - Customer Drw					

PDS: Rev:AE

STATUS:Released

Printed: Mar 09, 2012

PRODUCT NO.	NO. OF POSITION	DIMENSION		
		A	B	C
61083-044***	2X20	15.2	21.8	20.2
61083-064***	2X30	23.2	29.8	28.2
61083-084***	2X40	31.2	37.8	36.2
61083-104***	2X50	39.2	45.8	44.2
61083-124***	2X60	47.2	53.8	52.2
61083-144***	2X70	55.2	61.8	60.2
61083-164***	2X80	63.2	69.8	68.2
61083-184***	2X90	71.2	77.8	76.2
61083-204***	2X100	79.2	85.8	84.2



PLUG 4

spec ref	dr	MAGGIE WU	1999-03-24	projection	mm	size	A3	scale	3:1
tolerance std	eng	YU WEN CHU	1999-03-24	chr	M CHEONG	2012-03-06	ecm no	ELX-S-010487	
	appr	CH TAN	2012-03-06	product family	BERGSTAK	-	rel level	RELEASE	
surface	linear	0.X	±0.2	title	BERGSTAK 0.8mm BTB	dwg no	61083	rev	AE
		0.XX	±0.15		PLUG ASSY				
	angular	0°	±2°	www.fci.com	cat. no.	-	Product - Customer Drw	sheet 5 of 6	

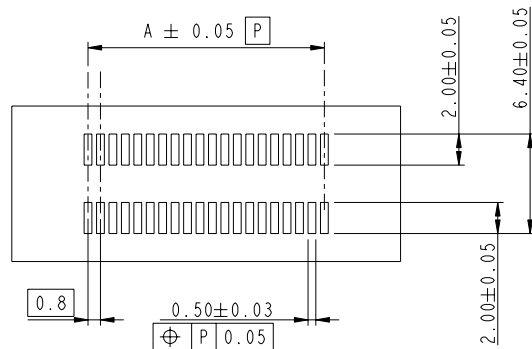
Prod File - REV C - 2009-05-09

PDS: Rev:AE

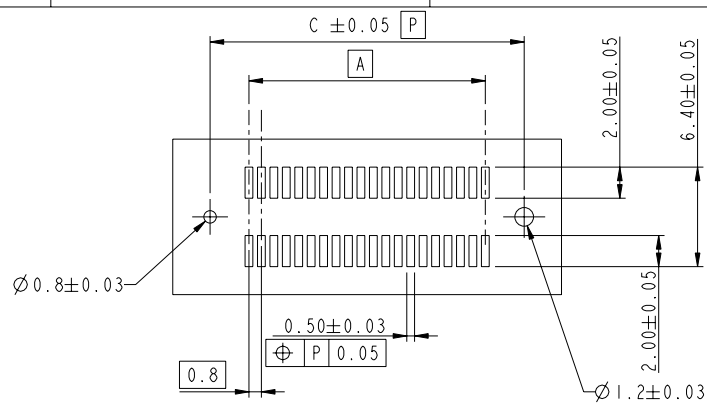
STATUS:Released

Printed: Mar 09, 2012

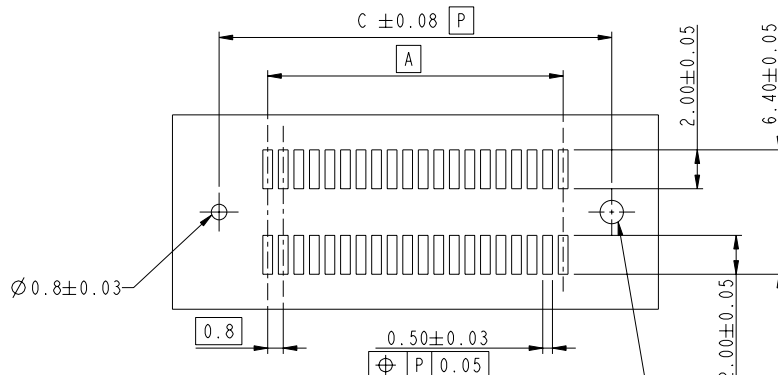
FOR PLUG 1/2/3/4






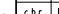
RECOMMENDED PCB LAYOUT WITHOUT PEG AND HOLDDOWN FOR NO. OF POS 2X20, 2X30, 2X40, 2X50, 2X60



RECOMMENDED PCB LAYOUT WITH PEG FOR NO. OF POS 2X20, 2X30, 2X40, 2X50, 2X60



RECOMMENDED PCB LAYOUT WITH PEG FOR NO. OF POS 2X70, 2X80, 2X90, 2X100

spec ref		dr		MAGGIE WU	1999-03-24	projection		mm		size		A3		scale		3:1							
tolerance std		TOLERANCES UNLESS OTHERWISE SPECIFIED				eng		YU WEN CHU		1999-03-24						ecm no		ELX-S-010487					
chr						M CHEONG		2012-03-06															
appr						CH TAN		2012-03-06															
product family						BERGSTAK		-		rel level										RELEASE			
surface				linear		0.X		±0.2				title		BERGSTAK 0.8mm BTB		deg no		61083		rev		AE	
						0.XX		±0.15															
						0.XXX		±0.10															
				angular		0°		±2°															
				www.fci.com		cat. no.				-		Product - Customer Drw				sheet 6 of 6							

PDS: Rev :AE

STATUS:Released

Printed: Mar 09, 2012