

IEC Appliance Plug F shuttered, 70°C



4723

**Description**

- Panel Mount Snap-In Version, from front side
- Outlet shuttered, Pin temperature 70 °C, Protection class I
- Solder terminals or quick connect terminals

Other versions on request

- For protection class II

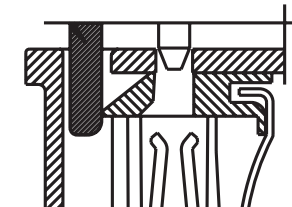
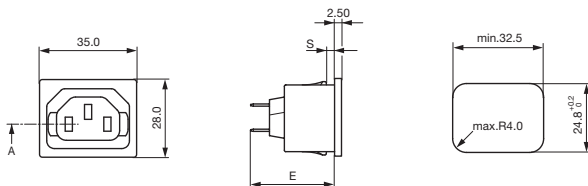
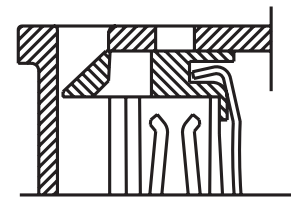
WeblinksApprovals: <http://www.schurter.com/approvals>RoHS: <http://www.schurter.com/rohs>**Technical Data**

Ratings IEC	10 A / 250 VAC; 50 Hz
Ratings UL/CSA	15 A / 250 VAC; 60 Hz
Dielectric Strength	> 2 kVAC between L-N > 2 kVAC between L/N-PE (1 min/50 Hz)
Allowable Operation Temp.	-25 °C to 70 °C
Degree of Protection	from front side IP 30 acc. to IEC 60529
Protection Class	Suitable for appliances with protection class I acc. to IEC 61140
Terminal	Solder terminals or quick connect terminals
Panel Thickness s	Snap-in: 1/1.2/1.5/2/2.5/3 mm
Material: Housing	Thermoplastic, black, UL 94V-0

Appliance-Inlet /-Outlet	F acc. to IEC/EN 60320-2-2, UL 498, CSA C22.2 no. 42 (for cold condition) pin-temperature 70 °C, 10 A, Protection class I
--------------------------	--

Dimensions

4723

Length  35 mmShutter operation:
shutters opened by plug insertionShutter operation:
shutters closed when plug is removed

- E: Solder terminals 3.5 x 0.8 mm<TAB/><TAB/>28.4 mm
 E: Quick connect terminals 4.8 x 0.8 mm<TAB/>31.1 mm
 E: Quick connect terminals 6.3 x 0.8 mm<TAB/>33.2 mm
 S: 1.0/1.2/1.5/2.0/2.5/3.0 mm

Variants

Type	Panel mounting	Panel Thickness s [mm]	Terminal	Order Number
4723	Snap-in	1	Quick connect terminals 4.8 x 0.8 mm	4723.0100
4723	Snap-in	1.2	Quick connect terminals 4.8 x 0.8 mm	4728.0100
4723	Snap-in	1.5	Quick connect terminals 4.8 x 0.8 mm	4724.0100
4723	Snap-in	2	Quick connect terminals 4.8 x 0.8 mm	4725.0100
4723	Snap-in	2.5	Quick connect terminals 4.8 x 0.8 mm	4726.0100
4723	Snap-in	3	Quick connect terminals 4.8 x 0.8 mm	4727.0100
4723	Snap-in	1	Quick connect terminals 6.3 x 0.8 mm	4723.0000
4723	Snap-in	1.2	Quick connect terminals 6.3 x 0.8 mm	4728.0000
4723	Snap-in	1.5	Quick connect terminals 6.3 x 0.8 mm	4724.0000
4723	Snap-in	2	Quick connect terminals 6.3 x 0.8 mm	4725.0000
4723	Snap-in	2.5	Quick connect terminals 6.3 x 0.8 mm	4726.0000
4723	Snap-in	3	Quick connect terminals 6.3 x 0.8 mm	4727.0000
4723	Snap-in	1	Solder terminals 3.8 x 0.8 mm	4723.0300
4723	Snap-in	1.2	Solder terminals 3.8 x 0.8 mm	4728.0300
4723	Snap-in	1.5	Solder terminals 3.8 x 0.8 mm	4724.0300
4723	Snap-in	2	Solder terminals 3.8 x 0.8 mm	4725.0300
4723	Snap-in	2.5	Solder terminals 3.8 x 0.8 mm	4726.0300
4723	Snap-in	3	Solder terminals 3.8 x 0.8 mm	4727.0300

Class II product also available on request

Cord retaining clamps and insulation covers see accessories

Packaging unit 100 Pcs

Accessory

Description



Assorted Covers



Cord retaining kits