

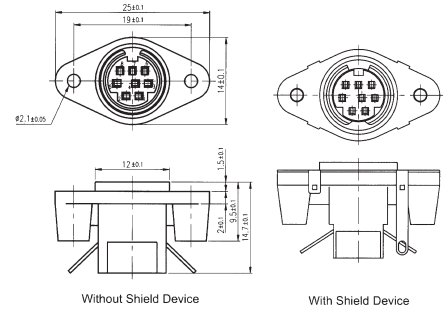
G18DR Mini-DIN Receptacle Panel Mount Housing

Materials

Housing – 94V-0 thermoplastic
Shield – Carbon steel
Shield Plating – 100µ" Tin/lead

Related Information

Socket Contact – G18DC see below
Mating Half – Page C-14



Part Number System:

G18DR XX X X

Mini-DIN Housing Rec.
Panel Mount for Crimp Contacts

VARIATION CODE
Blank: Standard

NUMBER OF POSITIONS

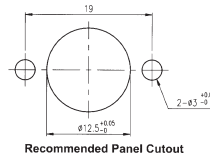
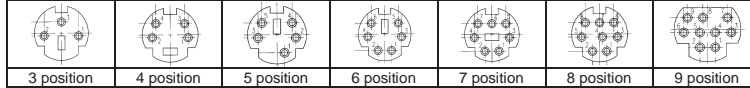
03: 3 Position
04: 4 Position
05: 5 Position
06: 6 Position
07: 7 Position
08: 8 Position

SHIELDING OPTION

0: With Shielding
1: Without Shielding

MDIN-G18DRXX0-06 Rev.A

Insert Arrangements



G18DC Mini-DIN Crimp Socket Contacts for G18DR

Materials

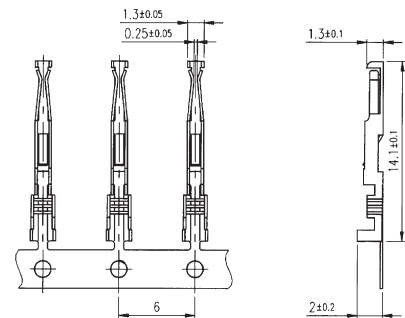
Contact – P/B with 50µ" Ni

Durability

Gold Flash – 75 cycles
15µ" Gold – 125 cycles
30µ" Gold – 250 cycles
100µ" Tin/lead – 200 cycles

Electrical

Current – 1.5A
Voltage – 250VAC/rms 60Hz



Part Number System:

G18DC X X X X

Mini-DIN Contacts
Socket Crimp for 24–28AWG

VARIATION CODE
Blank: Standard

CONTACT FINISH

0: Gold Flash
1: 30µ" Gold
3: 15µ" Gold
5: 100µ" Tin/Lead

PACKING OPTION
3: Reel of 5,000
4: Reel of 10,000

PACKING STYLE
1: Right Hand Feed
2: Left Hand Feed

MDIN-G18DCXX-06 Rev.A

G18H Mini-DIN Dual Port R/A PCB Mount Receptacle

Materials

Housing – 94V-0 thermoplastic
Shield – Carbon steel
Shield Plating – 100µ" Tin/lead
Contact – P/B with 50µ" Ni

Durability

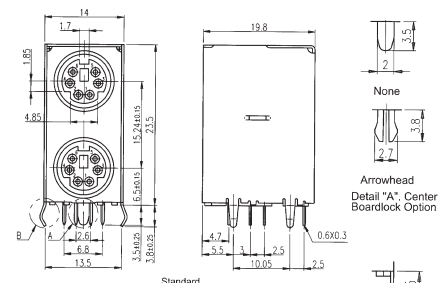
Gold Flash – 75 cycles
15µ" Gold – 125 cycles
30µ" Gold – 250 cycles
100µ" Tin/lead – 200 cycles

Electrical

Current – 1.5A
Voltage – 250VAC/rms 60Hz

Related Information

Mating Half – C-14
Inserts – See above



Part Number System:

G18H X X X X X

Mini-DIN Dual Port Rec.
G18H: Standard Temperature
G18HM: High Temperature

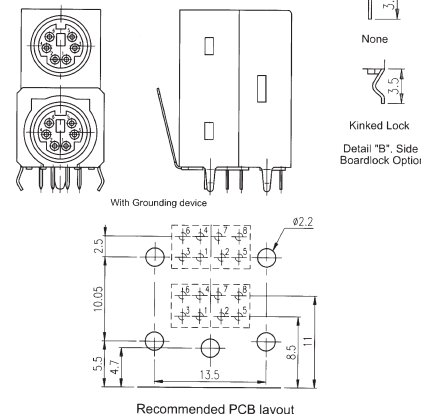
BOARDLOCK OPTIONS
0: None
1: Centre Arrowhead only
2: Side Boardlock only
3: Both Centre & Side Locks

NUMBER OF POSITIONS TOP
NUMBER OF POSITIONS BOTTOM

3: 3 Position
4: 4 Position
5: 5 Position
6: 6 Position
7: 7 Position
8: 8 Position
9: 9 Position

CONTACT FINISH
0: Gold Flash
1: 30µ" Gold
3: 15µ" Gold
5: 100µ" Tin/Lead

GROUNDING OPTION
0: Standard
1: With Grounding



PNS-18H Rev.A /MDIN-G18H661X2-06 Rev.A

For further variations and information, consult representative

Amphenol AMEA

Specifications are subject to change without notice
All dimensions in mm. P/B – Phosphor Bronze. Ni – Nickel. µ" – Micro inches.

<http://www.amphenol.co.za> e-mail: amphenol_africa@csi.com

C-22

AMTA

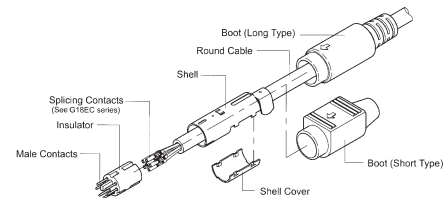
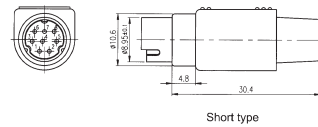
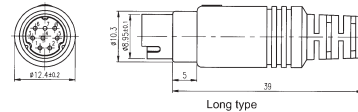
G18E Mini-DIN Plug Cable Mount Assembly

Materials

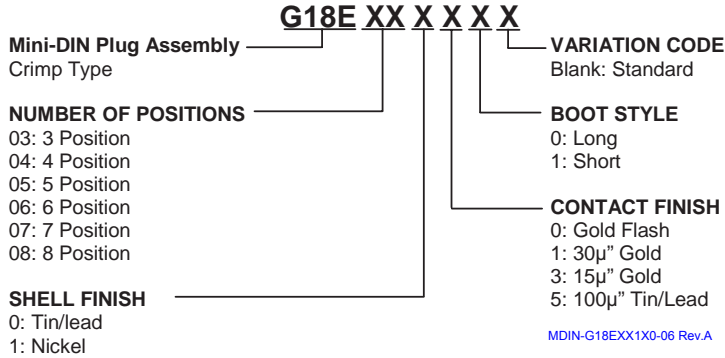
| | |
|---------|------------------------|
| Housing | - 94V-0 thermoplastic |
| Shell | - Carbon steel 50µ" Ni |
| Boot | - 94V-0 PVC |

Related Information

| | |
|------------------|---------------------|
| Splicing Contact | - G18EC see below |
| Mating Half | - Page C-13 & below |
| Inserts | - C-13 |



Part Number System:



G18EC Mini-DIN Crimp Splice Contacts for G18E

Materials

| | |
|---------|--------------------|
| Contact | - P/B with 50µ" Ni |
|---------|--------------------|

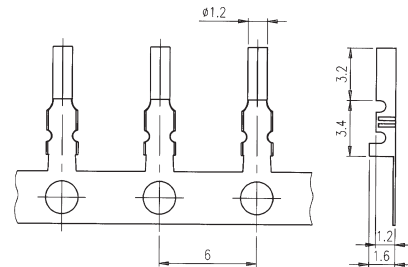
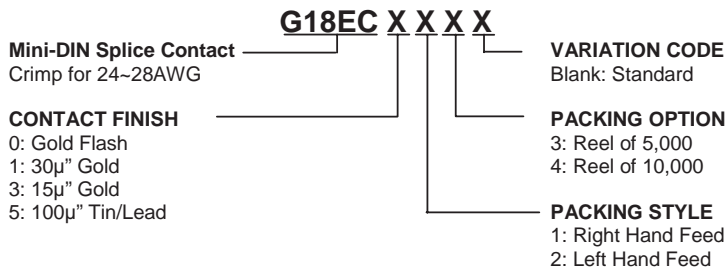
Electrical

| | |
|---------|-------------------|
| Current | - 1.5A |
| Voltage | - 250VAC/rms 60Hz |

Durability

| | |
|----------------|--------------|
| Gold Flash | - 75 cycles |
| 15µ" Gold | - 125 cycles |
| 30µ" Gold | - 250 cycles |
| 100µ" Tin/lead | - 200 cycles |

Part Number System:



G18 Mini-DIN R/A PCB Mount Receptacle

Materials

| | |
|----------------|-----------------------|
| Housing | - 94V-0 thermoplastic |
| Shield | - Carbon steel |
| Shield Plating | - 100µ" Tin/lead |
| Contact | - P/B with 50µ" Ni |

Electrical

| | |
|---------|-------------------|
| Current | - 1.5A |
| Voltage | - 250VAC/rms 60Hz |

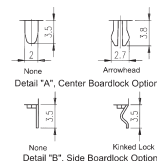
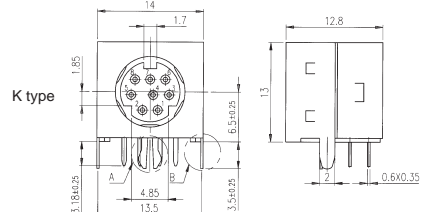
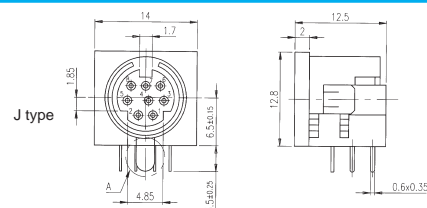
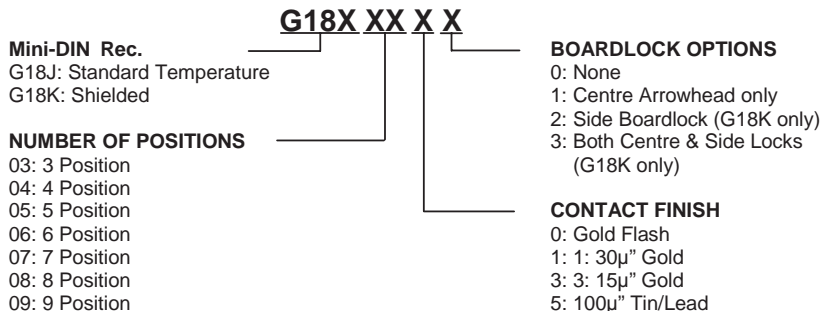
Durability

| | |
|----------------|--------------|
| Gold Flash | - 75 cycles |
| 15µ" Gold | - 125 cycles |
| 30µ" Gold | - 250 cycles |
| 100µ" Tin/lead | - 200 cycles |

Related Information

| | |
|-------------|-------------|
| Mating Half | - See above |
| Inserts | - C-13 |

Part Number System:



PNS-18J Rev.A/PNS-18K Rev.C /MDIN-G18JXXX1-1-06 Rev.A/MDIN-G18KXXXX-06 Rev.A

For further variations and information, consult representative