

### 3-TERMINAL NEGATIVE VOLTAGE REGULATOR

■ GENERAL DESCRIPTION

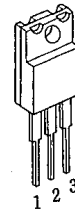
The NJM79M00 series of 3-Terminal Negative Voltage Regulators are constructed using the New JRC Planar epitaxial process. These regulators employ internal current limiting, thermal shutdown and safe-area compensation, making them essentially indestructible. If adequate heat sinking is provided, they can deliver up to 500mA output current. They are intended as fixed voltage regulators in a wide range of applications including local (on-card) regulation for elimination of noise and distribution problems associated with single point regulation. In addition to use a fixed voltage regulators, these devices can be used with external components to obtain adjustable output voltages and currents.

■ FEATURES

- Internal Short Circuit Current Limit
- Internal Thermal Overload Protection
- Excellent Ripple Rejection
- Guarantee'd 500mA Output Current
- Package Outline TO-220F, TO-252
- Bipolar Technology

■ PACKAGE OUTLINE

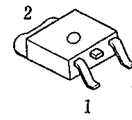
(TO-220F)



NJM79M00FA

- 1. COMMON
- 2. IN
- 3. OUT

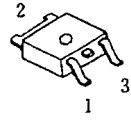
(TO-252)



NJM79M00DLA

- 1. COMMON
- 2. IN
- 3. OUT

(TO-252)

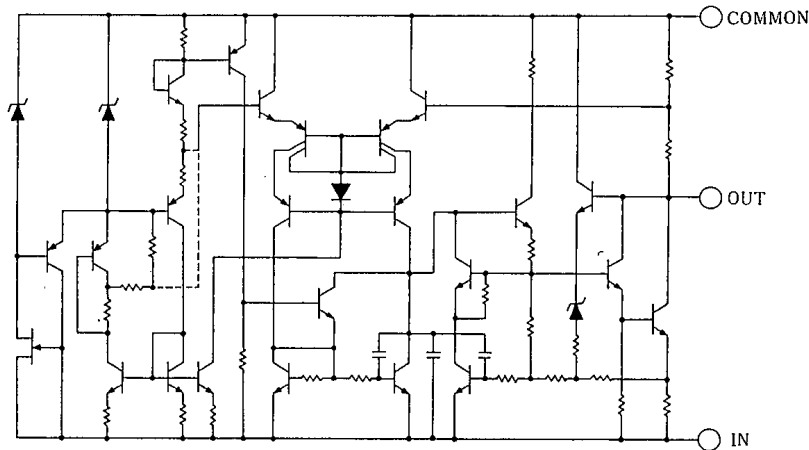


NJM79M00DL1A

- 1. COMMON
- 2. IN
- 3. OUT

(note) The radiation fin is connected to Pin 2.

■ EQUIVALENT CIRCUIT



## ■ ABSOLUTE MAXIMUM RATINGS

PARAMETER	SYMBOL	MAXIMUM RATINGS		UNIT
Input Voltage	$V_{IN}$	79M05~79M09	-35	V
		79M12~79M15	-35	
		79M18~79M24	-40	
Storage Temperature Range	$T_{stg}$	TO-220F	-40~+150	°C
		TO-252	-40~+150	
Operating Temperature Range	Operating Junction Temperature	$T_j$	TO-220F -30~+150 TO-252 -30~+150	°C
	Operating Junction Temperature	$T_{opr}$	-40~+85	
Power Dissipation	$P_D$	7.5( $T_c \leq 75^\circ C$ )		W

## ■ THERMAL CHARACTERISTICS

Thermal Resistance	Junction-to-Ambient Temperature	$\theta_{ja}$	TO220F	TO252	°C/W
			60	125	
	Junction-to-Case	$\theta_{jc}$	7	12.5	

## ■ ELECTRICAL CHARACTERISTICS ( $T_j=25^\circ C$ , $C_{IN}=2.2 \mu F$ , $C_o=1.0 \mu F$ )

PARAMETER	SYMBOL	TEST CONDITION	MIN.	TYP.	MAX.	UNIT
<b>NJM79M05A</b>						
Output Voltage	$V_O$	$V_{IN}=-10V, I_O=0.35A$	-4.8	-5.0	-5.2	V
Quiescent Current	$I_Q$	$V_{IN}=-10V, I_O=0mA$	—	2.2	5.0	mA
Load Regulation	$\Delta V_O-I_O$	$V_{IN}=-10V, I_O=0.005\sim 0.5A$	—	35	50	mV
Line Regulation	$\Delta V_O-V_{IN}$	$V_{IN}=-7\sim -25V, I_O=0.35A$	—	5	50	mV
Ripple Rejection	RR	$V_{IN}=-10V, I_O=0.35A, e_{in}=2V_{p-p}, f=120Hz$	50	58	—	dB
Output Noise Voltage	$V_{NO}$	$V_{IN}=-10V, I_O=0.35A, BW=10Hz\sim 100kHz$	—	100	—	$\mu V$
Average Temperature Coefficient of Output Voltage	$\Delta V_O/\Delta T$	$V_{IN}=-10V, I_O=5mA$	—	-0.4	—	mV/°C

6

■ **ELECTRICAL CHARACTERISTICS** ( $T_j=25^\circ\text{C}$ ,  $C_{IN}=2.2\ \mu\text{F}$ ,  $C_o=1.0\ \mu\text{F}$ ) Measurement is to be conducted in pulse testing.

PARAMETER	SYMBOL	TEST CONDITION	MIN.	TYP.	MAX.	UNIT
<b>NJM79M06A</b>						
Output Voltage	$V_o$	$V_{IN}=-11\text{V}$ , $I_o=0.35\text{A}$	-5.75	-6.0	-6.25	V
Quiescent Current	$I_Q$	$V_{IN}=-11\text{V}$ , $I_o=0\text{mA}$	—	2.2	5.0	mA
Load Regulation	$\Delta V_o-I_o$	$V_{IN}=-11\text{V}$ , $I_o=0.005\sim 0.5\text{A}$	—	35	60	mV
Line Regulation	$\Delta V_o-V_{IN}$	$V_{IN}=-8\sim -25\text{V}$ , $I_o=0.35\text{A}$	—	5	60	mV
Ripple Rejection	RR	$V_{IN}=-11\text{V}$ , $I_o=0.35\text{A}$ , $e_{in}=2\text{V}_{p-p}$ , $f=120\text{Hz}$	50	57	—	dB
Output Noise Voltage	$V_{NO}$	$V_{IN}=-11\text{V}$ , $I_o=0.35\text{A}$ , $BW=10\text{Hz}\sim 100\text{kHz}$	—	110	—	$\mu\text{V}$
Average Temperature Coefficient of Output Voltage	$\Delta V_o/\Delta T$	$V_{IN}=-11\text{V}$ , $I_o=5\text{mA}$	—	-0.5	—	mV/ $^\circ\text{C}$
<b>NJM79M08A</b>						
Output Voltage	$V_o$	$V_{IN}=-14\text{V}$ , $I_o=0.35\text{A}$	-7.7	-8.0	-8.3	V
Quiescent Current	$I_Q$	$V_{IN}=-14\text{V}$ , $I_o=0\text{mA}$	—	2.2	5.0	mA
Load Regulation	$\Delta V_o-I_o$	$V_{IN}=-14\text{V}$ , $I_o=0.005\sim 0.5\text{A}$	—	40	80	mV
Line Regulation	$\Delta V_o-V_{IN}$	$V_{IN}=-10.5\sim -25\text{V}$ , $I_o=0.35\text{A}$	—	8	80	mV
Ripple Rejection	RR	$V_{IN}=-14\text{V}$ , $I_o=0.35\text{A}$ , $e_{in}=2\text{V}_{p-p}$ , $f=120\text{Hz}$	50	55	—	dB
Output Noise Voltage	$V_{NO}$	$V_{IN}=-14\text{V}$ , $I_o=0.35\text{A}$ , $BW=10\text{Hz}\sim 100\text{kHz}$	—	130	—	$\mu\text{V}$
Average Temperature Coefficient of Output Voltage	$\Delta V_o/\Delta T$	$V_{IN}=-14\text{V}$ , $I_o=5\text{mA}$	—	-0.7	—	mV/ $^\circ\text{C}$
<b>NJM79M09A</b>						
Output Voltage	$V_o$	$V_{IN}=-15\text{V}$ , $I_o=0.35\text{A}$	-8.65	-9.0	-9.35	V
Quiescent Current	$I_Q$	$V_{IN}=-15\text{V}$ , $I_o=0\text{mA}$	—	2.2	5.0	mA
Load Regulation	$\Delta V_o-I_o$	$V_{IN}=-15\text{V}$ , $I_o=0.005\sim 0.5\text{A}$	—	40	90	mV
Line Regulation	$\Delta V_o-V_{IN}$	$V_{IN}=-11.5\sim -25\text{V}$ , $I_o=0.35\text{A}$	—	8	80	mV
Ripple Rejection	RR	$V_{IN}=-15\text{V}$ , $I_o=0.35\text{A}$ , $e_{in}=2\text{V}_{p-p}$ , $f=120\text{Hz}$	50	54	—	dB
Output Noise Voltage	$V_{NO}$	$V_{IN}=-15\text{V}$ , $I_o=0.35\text{A}$ , $BW=10\text{Hz}\sim 100\text{kHz}$	—	150	—	$\mu\text{V}$
Average Temperature Coefficient of Output Voltage	$\Delta V_o/\Delta T$	$V_{IN}=-15\text{V}$ , $I_o=5\text{mA}$	—	-0.8	—	mV/ $^\circ\text{C}$
<b>NJM79M12A</b>						
Output Voltage	$V_o$	$V_{IN}=-19\text{V}$ , $I_o=0.35\text{A}$	-11.5	-12.0	-12.5	V
Quiescent Current	$I_Q$	$V_{IN}=-19\text{V}$ , $I_o=0\text{mA}$	—	2.7	6.0	mA
Load Regulation	$\Delta V_o-I_o$	$V_{IN}=-19\text{V}$ , $I_o=0.005\sim 0.5\text{A}$	—	30	120	mV
Line Regulation	$\Delta V_o-V_{IN}$	$V_{IN}=-14.5\sim -30\text{V}$ , $I_o=0.35\text{A}$	—	3	80	mV
Ripple Rejection	RR	$V_{IN}=-19\text{V}$ , $I_o=0.35\text{A}$ , $e_{in}=2\text{V}_{p-p}$ , $f=120\text{Hz}$	54	71	—	dB
Output Noise Voltage	$V_{NO}$	$V_{IN}=-19\text{V}$ , $I_o=0.35\text{A}$ , $BW=10\text{Hz}\sim 100\text{kHz}$	—	150	—	$\mu\text{V}$
Average Temperature Coefficient of Output Voltage	$\Delta V_o/\Delta T$	$V_{IN}=-19\text{V}$ , $I_o=5\text{mA}$	—	-0.4	—	mV/ $^\circ\text{C}$

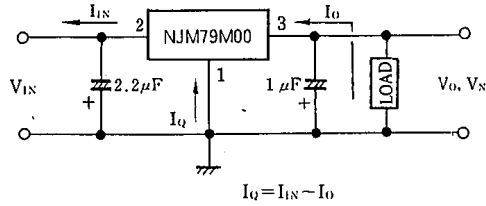


■ ELECTRICAL CHARACTERISTICS (T<sub>j</sub>=25°C, C<sub>IN</sub>=2.2 μF, C<sub>O</sub>=1.0 μF) Measurement is to be conducted in pulse testing.

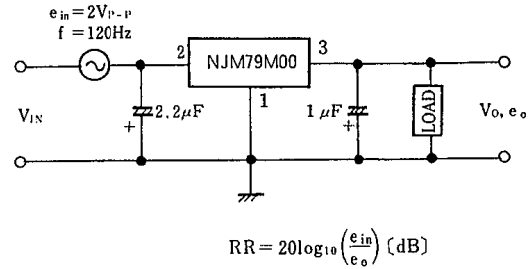
PARAMETER	SYMBOL	TEST CONDITION	MIN.	TYP.	MAX.	UNIT
<b>NJM79M15A</b>						
Output Voltage	V <sub>O</sub>	V <sub>IN</sub> =-23V, I <sub>O</sub> =0.35A	-14.4	-15.0	-15.6	V
Quiescent Current	I <sub>Q</sub>	V <sub>IN</sub> =-23V, I <sub>O</sub> =0mA	—	2.7	6.0	mA
Load Regulation	ΔV <sub>O</sub> -I <sub>O</sub>	V <sub>IN</sub> =-23V, I <sub>O</sub> =0.005~0.5A	—	30	150	mV
Line Regulation	ΔV <sub>O</sub> -V <sub>IN</sub>	V <sub>IN</sub> =-17.5~-30V, I <sub>O</sub> =0.35A	—	3	80	mV
Ripple Rejection	RR	V <sub>IN</sub> =-23V, I <sub>O</sub> =0.35A, e <sub>in</sub> =2V <sub>p-p</sub> , f=120Hz	54	70	—	dB
Output Noise Voltage	V <sub>NO</sub>	V <sub>IN</sub> =-23V, I <sub>O</sub> =0.35A, BW=10Hz~100kHz	—	170	—	μV
Average Temperature Coefficient of Output Voltage	ΔV <sub>O</sub> /ΔT	V <sub>IN</sub> =-23V, I <sub>O</sub> =5mA	—	-0.5	—	mV/°C
<b>NJM79M18A</b>						
Output Voltage	V <sub>O</sub>	V <sub>IN</sub> =-27V, I <sub>O</sub> =0.35A	-17.3	-18.0	-18.7	V
Quiescent Current	I <sub>Q</sub>	V <sub>IN</sub> =-27V, I <sub>O</sub> =0mA	—	2.7	6.0	mA
Load Regulation	ΔV <sub>O</sub> -I <sub>O</sub>	V <sub>IN</sub> =-27V, I <sub>O</sub> =0.005~0.5A	—	35	180	mV
Line Regulation	ΔV <sub>O</sub> -V <sub>IN</sub>	V <sub>IN</sub> =-21~-33V, I <sub>O</sub> =0.35A	—	4	80	mV
Ripple Rejection	RR	V <sub>IN</sub> =-27V, I <sub>O</sub> =0.35A, e <sub>in</sub> =2V <sub>p-p</sub> , f=120Hz	54	69	—	dB
Output Noise Voltage	V <sub>NO</sub>	V <sub>IN</sub> =-27V, I <sub>O</sub> =0.35A, BW=10Hz~100kHz	—	200	—	μV
Average Temperature Coefficient of Output Voltage	ΔV <sub>O</sub> /ΔT	V <sub>IN</sub> =-27V, I <sub>O</sub> =5mA	—	-0.6	—	mV/°C
<b>NJM79M24A</b>						
Output Voltage	V <sub>O</sub>	V <sub>IN</sub> =-33V, I <sub>O</sub> =0.35A	-23.0	-24.0	-25.0	V
Quiescent Current	I <sub>Q</sub>	V <sub>IN</sub> =-33V, I <sub>O</sub> =0mA	—	2.7	6.0	mA
Load Regulation	ΔV <sub>O</sub> -I <sub>O</sub>	V <sub>IN</sub> =-33V, I <sub>O</sub> =0.005~0.5A	—	40	240	mV
Line Regulation	ΔV <sub>O</sub> -V <sub>IN</sub>	V <sub>IN</sub> =-27~-38V, I <sub>O</sub> =0.35A	—	5	80	mV
Ripple Rejection	RR	V <sub>IN</sub> =-33V, I <sub>O</sub> =0.35A, e <sub>in</sub> =2V <sub>p-p</sub> , f=120Hz	54	66	—	dB
Output Noise Voltage	V <sub>NO</sub>	V <sub>IN</sub> =-33V, I <sub>O</sub> =0.35A, BW=10Hz~100kHz	—	300	—	μV
Average Temperature Coefficient of Output Voltage	ΔV <sub>O</sub> /ΔT	V <sub>IN</sub> =-33V, I <sub>O</sub> =5mA	—	-0.8	—	mV/°C

## ■ TEST CIRCUIT

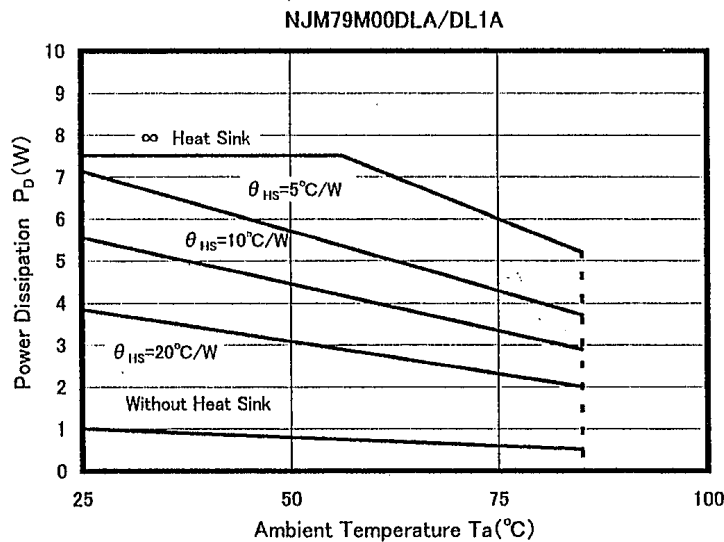
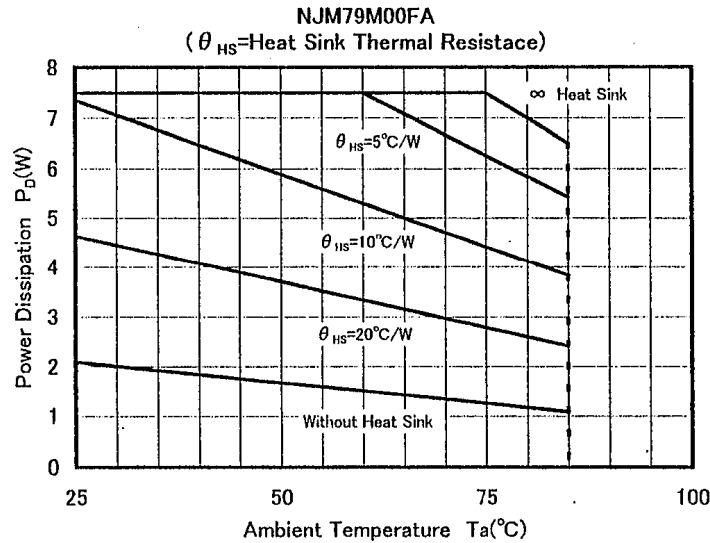
1. Output Voltage, Line Regulation, Load Regulation, Quiescent Current, Average Temperature Coefficient of Output Voltage, Output Noise Voltage



2. Ripple Rejection



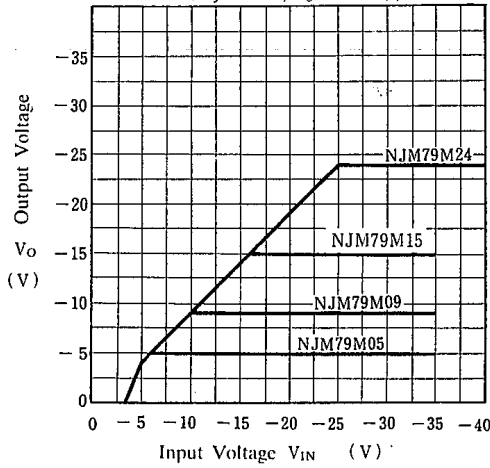
## ■ POWER DISSIPATION VS. AMBIENT TEMPERATURE



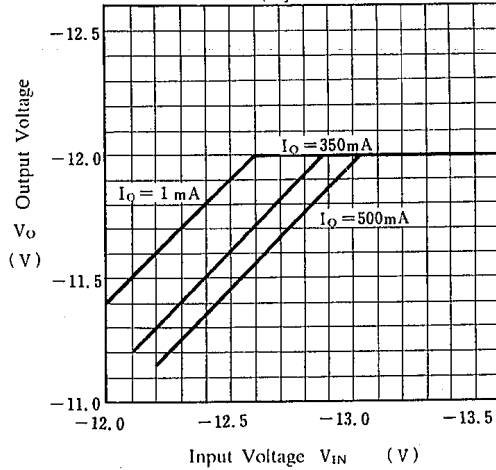
6

## TYPICAL CHARACTERISTICS

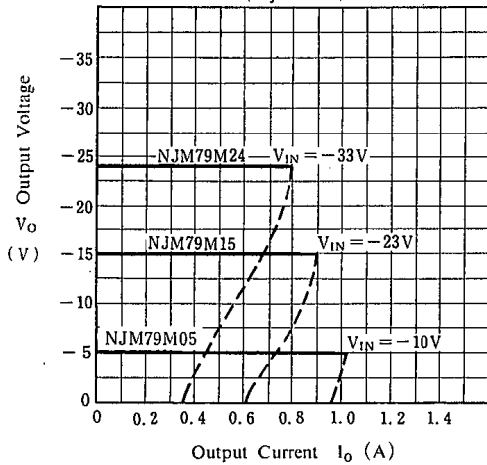
**NJM79M00 Output Characteristics**  
( $T_j=25^\circ\text{C}$ ,  $I_o=0.35\text{A}$ )



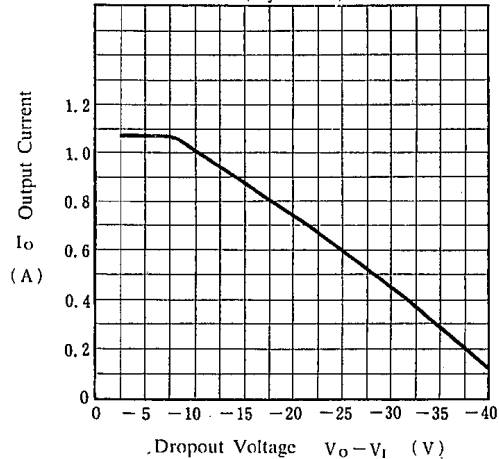
**NJM79M12 Output Voltage vs. Low Input Voltage**  
( $T_j=25^\circ\text{C}$ )



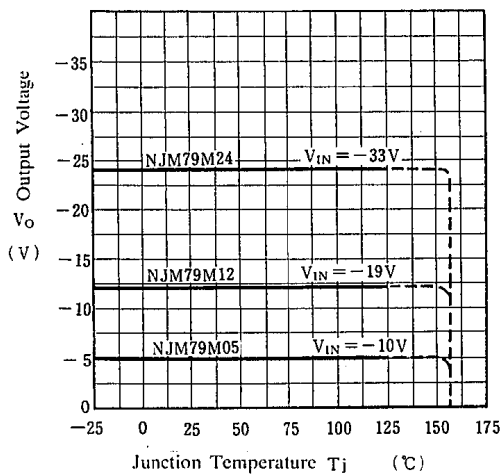
**NJM79M05/15/24 Load Characteristics**  
( $T_j=25^\circ\text{C}$ )



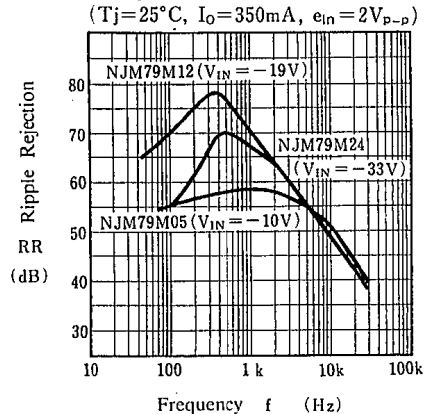
**NJM79M00 Series Short Circuit Output Current**  
( $T_j=25^\circ\text{C}$ )



**NJM79M05/12/24 Output Voltage vs. Junction Temperature**

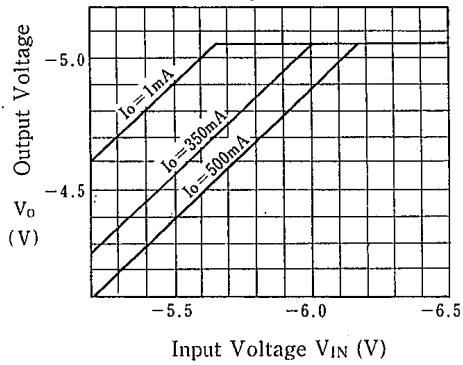


**NJM79M05/15/24 Ripple Rejection vs. Frequency**

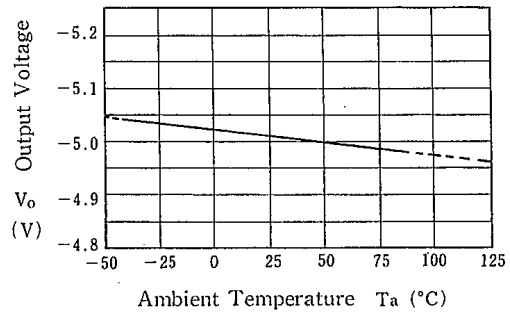


## ■ TYPICAL CHARACTERISTICS

**NJM79M05 Dropout Characteristics**  
( $T_j = 25^\circ\text{C}$ )



**NJM79M05 Output Voltage vs. Temperature**



**Quiescent Current vs. Input Voltage**

( $I_o = 0\text{ mA}$ ,  $T_j = 25^\circ\text{C}$ )

