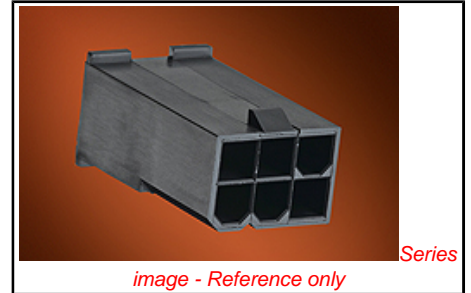


PLEASE CHECK WWW.MOLEX.COM FOR LATEST PART INFORMATION

Part Number: [50-36-1734](#)
Status: **Active**
Overview: [Mini-Fit Jr.™](#)
Description: 4.20mm Pitch Mini-Fit Jr.™ Plug Housing, Dual Row, with Panel Mount Ears, PA Polyamide Nylon 6/6, UL 94V-0, 2 Circuits, Glow Wire Compatible

Documents:

3D Model	Packaging Specification PK-5559-001 (PDF)
Drawing (PDF)	Test Summary TS-5556-002 (PDF)
Product Specification PS-5556-001 (PDF)	Test Summary TS-5559-001 (PDF)
Packaging Specification PK-5557-003 (PDF)	RoHS Certificate of Compliance (PDF)



General

Product Family	Crimp Housings
Series	5559
Application	Power, Wire-to-Wire
Comments	Current = 13A max. per circuit when header is mated to a receptacle loaded with 45750 series terminals crimped to 16 AWG wire. . See Molex product specification PS-45750-001 for additional current derating information.
Overview	Mini-Fit Jr.™
Product Name	Mini-Fit Jr.™

Physical

Breakaway	No
Circuits (maximum)	2
Color - Resin	Black
Gender	Plug
Glow-Wire Compliant	Yes
Keying to Mating Part	None
Lock to Mating Part	Yes
Material - Resin	Nylon
Number of Rows	2
Packaging Type	Bag
Panel Mount	Yes
Pitch - Mating Interface	4.20mm
Pitch - Termination Interface	4.20mm
Polarized to Mating Part	Yes
Ports	1
Stackable	No
Temperature Range - Operating	-40°C to +105°C

Electrical

Current - Maximum per Contact	13A
-------------------------------	-----

Material Info

Old Part Number	5559-02P-225
-----------------	--------------

Reference - Drawing Numbers

Packaging Specification	PK-5557-003, PK-5559-001
Product Specification	PS-5556-001
Sales Drawing	SD-5559-425
Test Summary	TS-5556-002, TS-5559-001

<p>EU RoHS ELV and RoHS Compliant REACH SVHC Contains SVHC: No Low-Halogen Status Low-Halogen</p>	<p>China RoHS</p>
<p>Need more information on product environmental compliance?</p> <p>Email productcompliance@molex.com For a multiple part number RoHS Certificate of Compliance, click here</p> <p>Please visit the Contact Us section for any non-product compliance questions.</p>	

<p>Search Parts in this Series 5559Series</p>
<p>Mates With 5557 Receptacle Housing</p>
<p>Use With 5558 Male Terminal</p>

This document was generated on 05/07/2012

PLEASE CHECK WWW.MOLEX.COM FOR LATEST PART INFORMATION