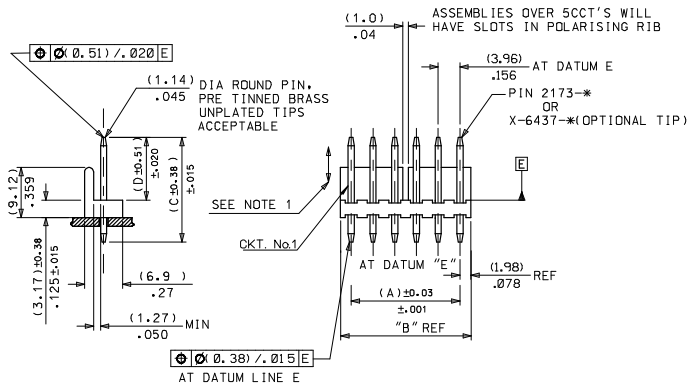
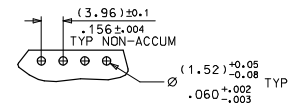


| ENG No:  | AE-3190-NA       | AE-3192-NB       | AE-3192-NC<br>SEE NOTE 3 | AE-3192-NH<br>SEE NOTE 3 | AE-3192-NT<br>SEE NOTE 3 | AE-3192-NS       |            |
|----------|------------------|------------------|--------------------------|--------------------------|--------------------------|------------------|------------|
| DIM "D"  | (11.43)<br>.450  | (16.18)<br>.637  | (26.92)<br>1.060         | (3.56)<br>.140           | (3.17)<br>.125           | (12.70)<br>.500  |            |
| DIM "C"  | (19.05)<br>.750  | (23.80)<br>.937  | (31.75)<br>1.250         | (19.05)<br>.750          | (19.05)<br>.750          | (50.80)<br>2.000 |            |
| CCT SIZE | DIM "A"          | DIM "B"          | PART No                  | PART No                  | PART No                  | PART No          | PART No    |
| 2        | (3.96)<br>.156   | (7.92)<br>.312   | 26-19-2021               | 26-19-2022               | 26-19-2023               | 26-19-2024       | 26-19-2025 |
| 3        | (7.92)<br>.312   | (11.89)<br>.468  | 26-19-2031               | 26-19-2032               | 26-19-2033               | 26-19-2034       | 26-19-2035 |
| 4        | (11.89)<br>.468  | (15.85)<br>.624  | 26-19-2041               | 26-19-2042               | 26-19-2043               | 26-19-2044       | 26-19-2045 |
| 5        | (15.85)<br>.624  | (19.81)<br>.780  | 26-19-2051               | 26-19-2052               | 26-19-2053               | 26-19-2054       | 26-19-2055 |
| 6        | (19.81)<br>.780  | (23.77)<br>.936  | 26-19-2061               | 26-19-2062               | 26-19-2063               | 26-19-2064       | 26-19-2065 |
| 7        | (23.77)<br>.936  | (27.74)<br>1.092 | 26-19-2071               | 26-19-2072               | 26-19-2073               | 26-19-2074       | 26-19-2075 |
| 8        | (27.74)<br>1.092 | (31.70)<br>1.248 | 26-19-2081               | 26-19-2082               | 26-19-2083               | 26-19-2084       | 26-19-2085 |
| 9        | (31.70)<br>1.248 | (35.66)<br>1.404 | 26-19-2091               | 26-19-2092               | 26-19-2093               | 26-19-2094       | 26-19-2095 |
| 10       | (35.66)<br>1.404 | (39.62)<br>1.560 | 26-19-2101               | 26-19-2102               | 26-19-2103               | 26-19-2104       | 26-19-2105 |
| 11       | (39.62)<br>1.560 | (43.59)<br>1.716 | 26-19-2111               | 26-19-2112               | 26-19-2113               | 26-19-2114       | 26-19-2115 |
| 12       | (43.59)<br>1.716 | (47.55)<br>1.872 | 26-19-2121               | 26-19-2122               | 26-19-2123               | 26-19-2124       | 26-19-2125 |
| 13       | (47.55)<br>1.872 | (51.51)<br>2.028 | 26-19-2131               | 26-19-2132               | 26-19-2133               | 26-19-2134       | 26-19-2135 |
| 14       | (51.51)<br>2.028 | (55.47)<br>2.184 | 26-19-2141               | 26-19-2142               | 26-19-2143               | 26-19-2144       | 26-19-2145 |
| 15       | (55.47)<br>2.184 | (59.44)<br>2.340 | 26-19-2151               | 26-19-2152               | 26-19-2153               | 26-19-2154       | 26-19-2155 |
| 16       | (59.44)<br>2.340 | (63.40)<br>2.496 | 26-19-2161               | 26-19-2162               | 26-19-2163               | 26-19-2164       | 26-19-2165 |
| 17       | (63.40)<br>2.496 | (67.36)<br>2.652 | 26-19-2171               | 26-19-2172               | 26-19-2173               | 26-19-2174       | 26-19-2175 |
| 18       | (67.36)<br>2.652 | (71.32)<br>2.808 | 26-19-2181               | 26-19-2182               | 26-19-2183               | 26-19-2184       | 26-19-2185 |
| 19       | (71.32)<br>2.808 | (75.29)<br>2.964 | 26-19-2191               | 26-19-2192               | 26-19-2193               | 26-19-2194       | 26-19-2195 |
| 20       | (75.29)<br>2.964 | (79.25)<br>3.120 | 26-19-2201               | 26-19-2202               | 26-19-2203               | 26-19-2204       | 26-19-2205 |



WAFER MATERIAL: NYLON 94V-2



NOTES:

- PIN PUSH OUT FORCE 3 LBS MIN
- PIN MUST CONFORM TO MOLEX SOLDERABILITY SPEC No 152 AFTER PLATING
- ON THE FOLLOWING WAFERS DIM "D" IS FROM THE BOTTOM OF THE PIN TO THE BOTTOM OF THE WAFER: AE-3190-NC, AE-3190-NT, AE-3190-NH
- RECOMMENDED PCB BOARD 1.6MM

|   |                               |   |  |  |  |  |
|---|-------------------------------|---|--|--|--|--|
| ADDED PCB NOTE<br>EC NO: E2008-0302<br>DRAWN BY: LERMAN<br>CHKD: CHIKO<br>APPR: BMAGUIRE<br>DATE: 2008/02/04<br>2008/02/07<br>2008/02/07<br>DESCRIPTION | QUALITY SYMBOLS<br>▽=0<br>▽=0 | GENERAL TOLERANCES (UNLESS SPECIFIED)<br>mm INCH<br>4 PLACES ± --- ± ---<br>3 PLACES ± --- ± .010<br>2 PLACES ± 0.25 ± .014<br>1 PLACE ± 0.35 ± ---<br>ANGULAR ± 1/2° |  | DIMENSION STYLE<br>MM ONLY<br>DRAWN BY: MOHON<br>DATE: 1998/10/02<br>CHECKED BY: M GOONEY<br>DATE: 1998/10/02<br>APPROVED BY: MWILHITE<br>DATE: 1998/10/02 |  | SCALE: 2:1<br>DESIGN UNITS: METRIC<br>THIRD ANGLE PROJECTION |
|   |                               | DRAFT WHERE APPLICABLE MUST REMAIN WITHIN DIMENSIONS  |  | MATERIAL NO. SEE CHART<br>DOCUMENT NO. SDAE-3190-N**<br>SHEET NO. 1 OF 2   |  | MOLEX INCORPORATED<br>WAFFER POL KK .156 FOR .045 ROUND PINS |