

PART NO.	PARTS NAME	MATERIAL	Q'TY	NOTE
1	HOUSING	HIGH TEMPERATURE THERMOPLASTIC REINFORCED (UL94V-0)	1	COLOR: BLACK
2	CONTACT	PHOSPHOR BRONZE	n	PLATING (LEAD FREE)
3	SMT CLIP	BRASS	2	

CATALOG NUMBER HFW (n) R -1 ST E1 MT LF

SERIES

NO. OF CONTACTS

RIGHT ANGLE TYPE

FOR FFC/FPC, CONTACT DIRECTION, (LOWER CONTACT TYPE)

FOR AUTOMATIC MOUNTING -- (SMT)

TAPE & REEL PACKAGING

MODIFY VERSION

LEAD FREE

30	HFW30R-1STE1MTLF	29	31.14	33.8
29	HFW29R-1STE1MTLF	28	30.14	32.8
28	HFW28R-1STE1MTLF	27	29.14	31.8
27	HFW27R-1STE1MTLF	26	28.14	30.8
26	HFW26R-1STE1MTLF	25	27.14	29.8
25	HFW25R-1STE1MTLF	24	26.14	28.8
24	HFW24R-1STE1MTLF	23	25.14	27.8
23	HFW23R-1STE1MTLF	22	24.13	26.8
22	HFW22R-1STE1MTLF	21	23.14	25.8
21	HFW21R-1STE1MTLF	20	22.14	24.8
20	HFW20R-1STE1MTLF	19	21.14	23.8
19	HFW19R-1STE1MTLF	18	20.14	22.8
18	HFW18R-1STE1MTLF	17	19.14	21.8
17	HFW17R-1STE1MTLF	16	18.14	20.8
16	HFW16R-1STE1MTLF	15	17.14	19.8
15	HFW15R-1STE1MTLF	14	16.14	18.8
14	HFW14R-1STE1MTLF	13	15.14	17.8
13	HFW13R-1STE1MTLF	12	14.14	16.8
12	HFW12R-1STE1MTLF	11	13.14	15.8
11	HFW11R-1STE1MTLF	10	12.14	14.8
10	HFW10R-1STE1MTLF	9	11.14	13.8
9	HFW9R-1STE1MTLF	8	10.14	12.8
8	HFW8R-1STE1MTLF	7	9.14	11.8
7	HFW7R-1STE1MTLF	6	8.14	10.8
6	HFW6R-1STE1MTLF	5	7.14	9.8
5	HFW5R-1STE1MTLF	4	6.14	8.8
4	HFW4R-1STE1MTLF	3	5.14	7.8
CIRCUIT	CATALOG NO.	A	B	C

NOTES

1. THIS PRODUCT IS THE CONNECTOR DESIGNED TO TERMINATE FPC/FFC AND COPS WITH AUTOMATIC MOUNTING (SMT).
2. MISALIGNMENT OF SOLDER TAIL AND SMT CLIP FROM DATUM E : UPPER DIRECTION 0.10 MAX. , LOWER DIRECTION 0.15 MAX.
3. THIS PRODUCT IS LOWER CONTACT TYPE CONNECTOR.
4. THIS PRODUCT IS MEETS EUROPEAN UNION DIRECTIVES AND OTHER COUNTRY REGULATIONS AS DESCRIBED IN GS-22-008.
5. THE HOUSING WILL WITHSTAND EXPOSURE TO 260°C PEAK TEMPERATURE FOR 10 SECONDS IN A REFLOW SOLDERING OVEN.
6. THIS PRODUCT IS LOWER CONTACT TYPE CONNECTOR.
7. THIS CATALOG NO. INDICATES PLASTIC TAPE PACKAGED CONNECTOR.

mat'l. code				tolerances unless otherwise specified		projection	product family	
litr	ecn no	dr	date	angles	linear	mm	FFC/FPC	
c				x±z"	linear	mm	title	
				dr	SLIM	060907	1mm SPACING SMT	
				enrg	SLIM	060907	FPC/FFC CONNECTOR	
				chr	SLIM	060907	dwg no	
				appd	JOEY NG	060908	sheet 3 of 6	
							10073872	
							type Product Customer Drawing	
sheet index	revision sheet							size
								A4

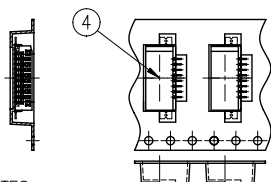
PDM: Rev:C

STATUS Released

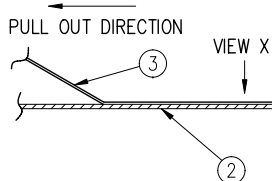
Printed: Jan 29, 2009

P/N:	PARTS NAME	CATALOG NO.	MATERIAL	QUANTITY	NOTE
①	REEL	-----	POLYSTYRENE (PS) <RECYCLE MATERIAL CONTAINED>	01	COLOR: BLACK
②	PLASTIC (EMBOSSED) CARRIER TAPE	-----	POLYSTYRENE (0.4mm Thick)	-----	COLOR: (CLEAR) TRANSPARENCY
③	COVER (TOP TAPE)	-----	POLYESTER	-----	COLOR: (CLEAR) TRANSPARENCY
④	CONNECTOR	HFW__R-1STE1MTLF	SEE ATTACHED DRAWING	1,000PCS/REEL	LOWER CONTACT TYPE

UNLESS OTHERWISE SPECIFIED: ± 5 , ANGLE $\pm 5^\circ$
TOLERANCES

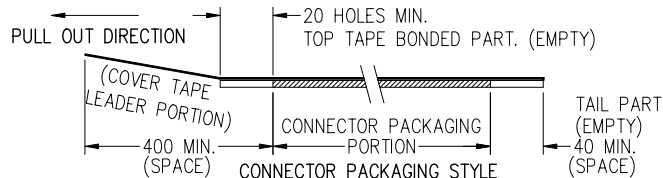


SCALE 4 : 1

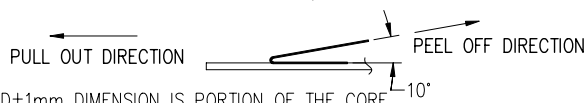


NOTES

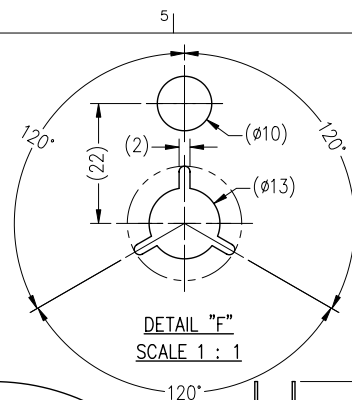
- THIS IS PLASTIC TAPE PACKAGED CONNECTOR DESIGNED TO TERMINATE FPC/FFC AND COPELS WITH AUTOMATIC MOUNTING (SMT).
- SEE JIS C 0806 (PACKING OF ELECTRONICS COMPONENTS ON CONTINUOUS TAPES, SURFACE MOUNT DEVICES) FOR SHAPE AND DIMENSIONS OF PLASTIC (EMBOSSED) TAPE AND REEL.
- LEAD TAPE LENGTH



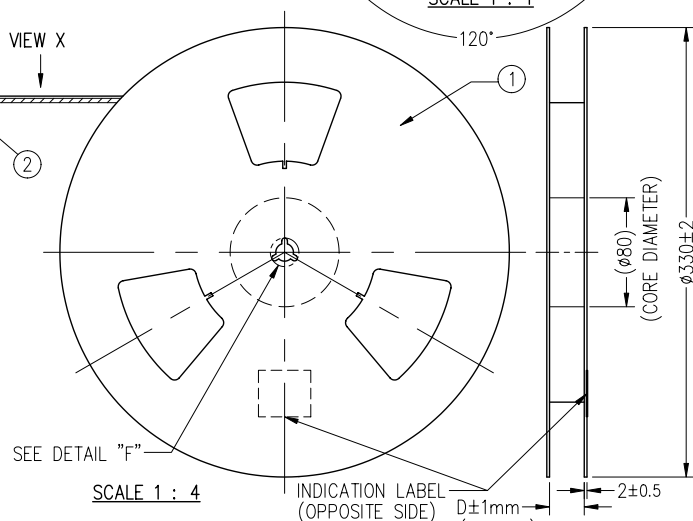
- PEELING OFF FORCE OF TOP TAPE TAPE: $0.1N \sim 0.7N (10.2gf \sim 71.4gf)$
(PEELING DIRECTION AS SHOWN IN FOLLOWING FIG.)
THIS REQUIREMENT SHOULD BE APPLIED AT SHIPMENT.
PEEL OFF SHOULD NOT BE ALLOWED, DURING TRANSPORTATION.



- $D \pm 1mm$ DIMENSION IS PORTION OF THE CORE.



DETAIL "F"
SCALE 1 : 1



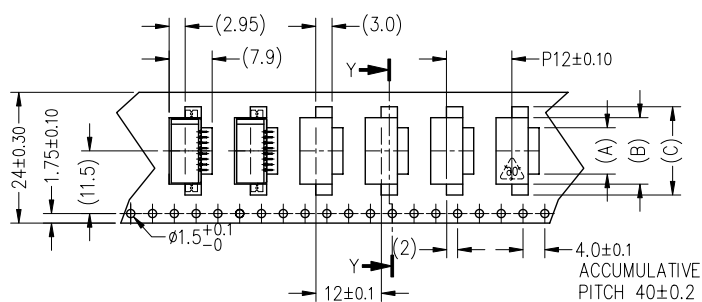
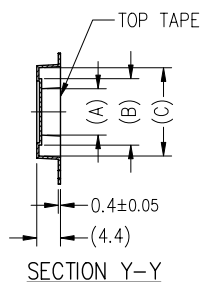
mat'l. code				tolerances unless otherwise specified		projection	product family
ltr	ecn no	dr	date	angles	linear	mm	FFC/FPC
c				-----	-----	-----	
				linear	.XX±.20	mm	
				dr	SLIM 060907	scale 4:1	
				enrg	SLIM 060907		
				chr	SLIM 060907		
				appd	JOEY NG 060908		
sheet index	revision sheet						

title			sheet 4 of 6	size
1mm SPACING SMT FPC/FFC CONNECTOR				A4
dwg no	10073872			
type	Product	Customer	Drawing	

PDM: Rev:C

STATUS Released

Printed: Jan 29, 2009



PULL OUT DIRECTION



24mm WIDTH CARRIER TAPE

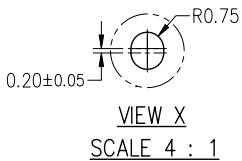
10	HFW10R-1STE1MTLF	10.5	14.2	18.2	25.5	24
9	HFW9R-1STE1MTLF	9.5	13.2	17.2		
8	HFW8R-1STE1MTLF	8.5	12.2	16.2		
7	HFW7R-1STE1MTLF	7.5	11.2	15.5		
6	HFW6R-1STE1MTLF	6.5	10.2	14.2		
5	HFW5R-1STE1MTLF	5.5	9.2	13.2		
4	HFW4R-1STE1MTLF	4.5	8.2	12.2		
CIRCUIT	CATALOG NO.	(A)	(B)	(C)	D±1mm REEL CORE	CARRIER TAPE WIDTH

mat'l. code				tolerances unless otherwise specified			projection	product family		
ltr	ecn no	dr	date	angles	linear	----- .XX±.20 -----	mm	FFC/FPC		
c				x°±2°			scale 4:1	title		
				dr	SLIM	060907		1mm SPACING SMT		
				enrg	SLIM	060907		FPC/FFC CONNECTOR		
				chr	SLIM	060907		dwg no		
				appd	JOEY NG	060908		sheet 5 of 6		
sheet index		revision sheet						10073872		
								type Product Customer Drawing		
								size A4		

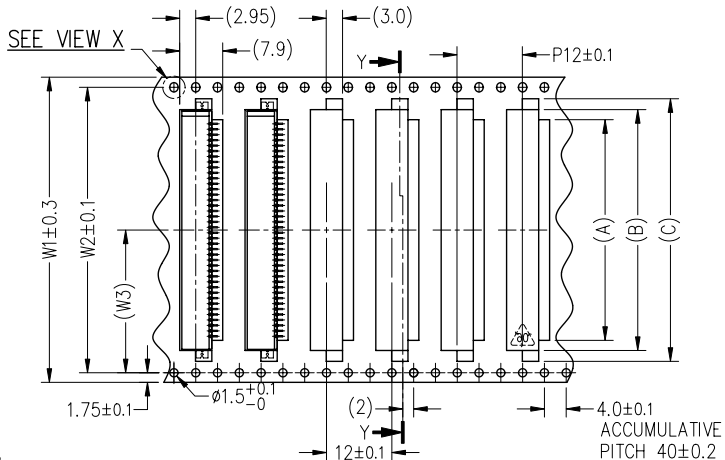
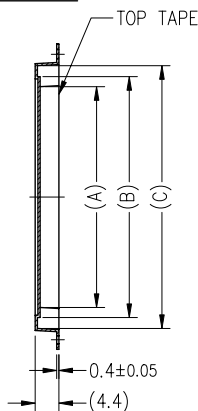
PDM: Rev:C

STATUS Released

Printed: Jan 29, 2009



SECTION Y-Y



PULL OUT DIRECTION



32mm, 44mm, & 56mm WIDTH CARRIER TAPE

30	HFW30R-1STE1MTLF	30.5	34.2	38.2	57.5	56	52.4	26.2
29	HFW29R-1STE1MTLF	29.5	33.2	37.2				
28	HFW28R-1STE1MTLF	28.5	32.2	36.2				
27	HFW27R-1STE1MTLF	27.5	31.2	35.2				
26	HFW26R-1STE1MTLF	26.5	30.2	34.2	45.5	44	40.4	20.2
25	HFW25R-1STE1MTLF	25.5	29.2	33.2				
24	HFW24R-1STE1MTLF	24.5	28.2	32.2				
23	HFW23R-1STE1MTLF	23.5	27.2	31.2				
22	HFW22R-1STE1MTLF	22.2	26.2	30.2				
21	HFW21R-1STE1MTLF	21.5	25.2	29.2				
20	HFW20R-1STE1MTLF	20.5	24.2	28.2	33.5	32	28.4	14.2
19	HFW19R-1STE1MTLF	19.5	23.2	27.2				
18	HFW18R-1STE1MTLF	18.5	22.2	26.2				
17	HFW17R-1STE1MTLF	17.5	21.2	25.2				
16	HFW16R-1STE1MTLF	16.5	20.2	24.2				
15	HFW15R-1STE1MTLF	15.5	19.2	23.2				
14	HFW14R-1STE1MTLF	14.5	18.2	22.2	D±1mm	W1	W2	(W3)
13	HFW13R-1STE1MTLF	13.5	17.2	21.2				
12	HFW12R-1STE1MTLF	12.5	16.2	20.2				
11	HFW11R-1STE1MTLF	11.5	15.2	19.2				

CIRCUIT	CATALOG NO.	(A)	(B)	(C)	REEL CORE	CARRIER TAPE		
---------	-------------	-----	-----	-----	-----------	--------------	--	--

mat'l. code				tolerances unless otherwise specified			projection	product family		
litr	ecr	no	dr	date	angles	linear	mm	FFC/FPC		
c					x±z	linear	mm	title		
					dr	SLIM	060907	1mm SPACING SMT		
					enr	SLIM	060907	FPC/FPC CONNECTOR		
					chr	SLIM	060907	dwg no		
					appd	JOEY NG	060908	10073872		
								sheet 6 of 6		
								size		
								A4		
								type		
								Product Customer Drawing		

PDM: Rev:C

STATUS Released

Printed: Jan 29, 2009