

10 9 8 7 6 5 4 3 2 1

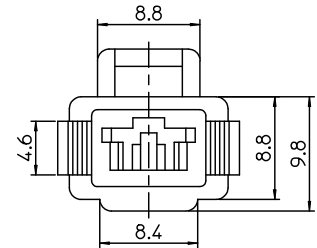
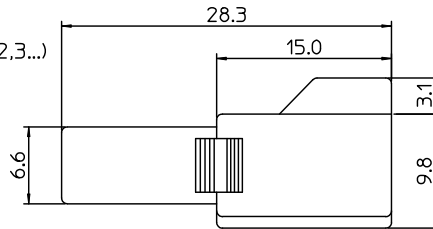
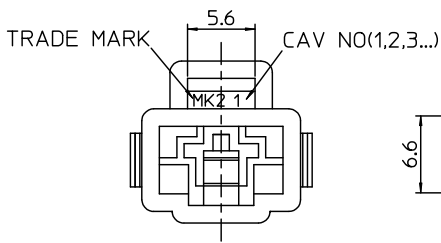
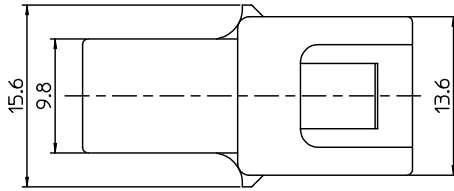
NOTES.

1. MATERIAL & COLOR & APPLICABLE TERMINAL : SEE TABLE

MATERIAL NO.	ENG NO.	MATERIAL	COLOR
359550110	35955-0110	PA66(UL94V-2)	NATURAL
359550130	35955-0130	PBT(UL94V-0)	NATURAL
359550150	35955-0150	PC/PET(UL94V-0)	NATURAL
359550151	35955-0151		BLACK
359550153	35955-0153		YELLOW
APPLICABLE TERMINAL			
35725-18*0	35725-19*0	35725-30*0	

2. MATED HOUSING & APPLICABLE TERMINAL : SEE TABLE

MATERIAL NO.	ENG NO.	MATERIAL	COLOR
359550120	35955-0120	PA66(UL94V-2)	NATURAL
359550140	35955-0140	PBT(UL94V-0)	NATURAL
359550160	35955-0160	PC/PET(UL94V-0)	NATURAL
359550161	35955-0161		BLACK
359550163	35955-0163		YELLOW
APPLICABLE TERMINAL			
35725-36*0	35725-37*0	35725-38*0	



REVISED EC NO: KOR2009-0054 DRWN: JHPARK01 2008/10/27 CHKD: WYANG 2008/10/27 APPR: YUNSIKIM 2008/10/27	QUALITY SYMBOLS	GENERAL TOLERANCES (UNLESS SPECIFIED)	DIMENSION STYLE	SCALE	DESIGN UNITS	THIRD ANGLE PROJECTION
	▽=0 ▽=0	mm INCH 4 PLACES ± --- ± --- 3 PLACES ± --- ± --- 2 PLACES ± 0.30 ± --- 1 PLACE ± 0.30 ± --- ANGULAR ± 1 °	MM ONLY	3:1	METRIC	
	DESCRIPTION	DRAFT WHERE APPLICABLE MUST REMAIN WITHIN DIMENSIONS	DRAWN BY JS.KANG DATE 1999/08/16 CHECKED BY BK.CHOI DATE 1999/08/16 APPROVED BY CW.LEE DATE 1999/08/16	TITLE	.250 RECEPTACLE HSG-1P	
	REV		MATERIAL NO. SEE TABLE	DOCUMENT NO. SD-35955-0110	MOLEX INCORPORATED SHEET NO. 1 OF 01	