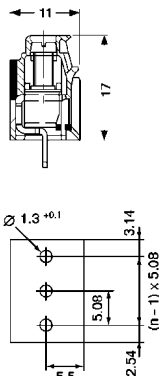


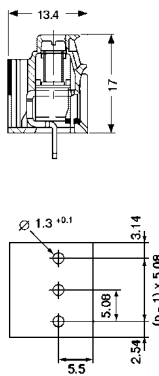


LP 5.08/90



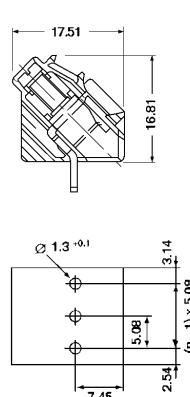
with test point

LPP 5.08/90



with test point

LP 5.08/135



Technical data	VDE	UL	CSA
Rated voltage (V)	250*	300	300
Rated current (A)	25	15	20
Wire size (mm ² /AWG)	4.0	26...12	26...12

*Pollution severity 3 / Overvoltage category III
Additional technical data see page 58

Technical data	VDE	UL	CSA
Rated voltage (V)	250*	300	300
Rated current (A)	25	15	20
Wire size (mm ² /AWG)	4.0	26...12	26...12

*Pollution severity 3 / Overvoltage category III
Additional technical data see page 58

Technical data	VDE	UL	CSA
Rated voltage (V)	250*	300	300
Rated current (A)	25	15	20
Wire size (mm ² /AWG)	4.0	26...12	26...12

*Pollution severity 3 / Overvoltage category III
Additional technical data see page 58

Solder pin length 4.5 mm 4.5 mm

Color	Type	Part No.	Part No.	Qty.
1	LP 5.08/1/90	1730300000 ¹⁾ -		-
2	LP 5.08/2/90	1594540000	1696040000	100
3	LP 5.08/3/90	1594550000	1696050000	100
4	LP 5.08/4/90	995132	995153	
5	LP 5.08/5/90	995133	995154	
6	LP 5.08/6/90	995134	995155	
7	LP 5.08/7/90	995135	995156	
8	LP 5.08/8/90	995136	995157	
9	LP 5.08/9/90	995137	995158	
10	LP 5.08/10/90	995138	995159	
11	LP 5.08/11/90	995139	995160	
12	LP 5.08/12/90	995140	995161	
13	LP 5.08/13/90	995141	995162	
14	LP 5.08/14/90	995142	995163	
15	LP 5.08/15/90	995143	995164	
16	LP 5.08/16/90	995144	995165	
17	LP 5.08/17/90	995145	995166	
18	LP 5.08/18/90	995146	995167	
19	LP 5.08/19/90	995147	995168	
20	LP 5.08/20/90	995148	995169	
21	LP 5.08/21/90	995149	995170	
22	LP 5.08/22/90	995150	995171	
23	LP 5.08/23/90	995151	995172	
24	LP 5.08/24/90	995152	995173	

Accessories	Page
Marking	40
Mounting	46
Miscellaneous	43-46

See also page 47 "Application Examples LP System"
¹⁾Part number 1730300000 features 3.2 mm PCB pin length

Solder pin length 4.5 mm 4.5 mm

Color	Type	Part No.	Part No.	Qty.
2	LPP 5.08/2/90	1594600000	1697120000	100
3	LPP 5.08/3/90	1594610000	1697130000	100
4	LPP 5.08/4/90	995174	995195	
5	LPP 5.08/5/90	995175	995196	
6	LPP 5.08/6/90	995176	995197	
7	LPP 5.08/7/90	995177	995198	
8	LPP 5.08/8/90	995178	995199	
9	LPP 5.08/9/90	995179	995200	
10	LPP 5.08/10/90	995180	995201	
11	LPP 5.08/11/90	995181	995202	
12	LPP 5.08/12/90	995182	995203	
13	LPP 5.08/13/90	995183	995204	
14	LPP 5.08/14/90	995184	995205	
15	LPP 5.08/15/90	995185	995206	
16	LPP 5.08/16/90	995186	995207	
17	LPP 5.08/17/90	995187	995208	
18	LPP 5.08/18/90	995188	995209	
19	LPP 5.08/19/90	995189	995210	
20	LPP 5.08/20/90	995190	995211	
21	LPP 5.08/21/90	995191	995212	
22	LPP 5.08/22/90	995192	995213	
23	LPP 5.08/23/90	995193	995214	
24	LPP 5.08/24/90	995194	995215	

Accessories	Page
Marking	40
Mounting	46
Miscellaneous	43-46

Solder pin length 4.5 mm 4.5 mm

Color	Type	Part No.	Part No.	Qty.
2	LP 5.08/2/135	1595740000	1676740000	100
3	LP 5.08/3/135	1595700000	1676750000	100
4	LP 5.08/4/135	995216	995237	
5	LP 5.08/5/135	995217	995238	
6	LP 5.08/6/135	995218	995239	
7	LP 5.08/7/135	995219	995240	
8	LP 5.08/8/135	995220	995241	
9	LP 5.08/9/135	995221	995242	
10	LP 5.08/10/135	995222	995243	
11	LP 5.08/11/135	995223	995244	
12	LP 5.08/12/135	995224	995245	
13	LP 5.08/13/135	995225	995246	
14	LP 5.08/14/135	995226	995247	
15	LP 5.08/15/135	995227	995248	
16	LP 5.08/16/135	995228	995249	
17	LP 5.08/17/135	995229	995250	
18	LP 5.08/18/135	995230	995251	
19	LP 5.08/19/135	995231	995252	
20	LP 5.08/20/135	995232	995253	
21	LP 5.08/21/135	995233	995254	
22	LP 5.08/22/135	995234	995255	
23	LP 5.08/23/135	995235	995256	
24	LP 5.08/24/135	995236	995257	

Accessories	Page
Marking	40
Mounting	-
Miscellaneous	45-46