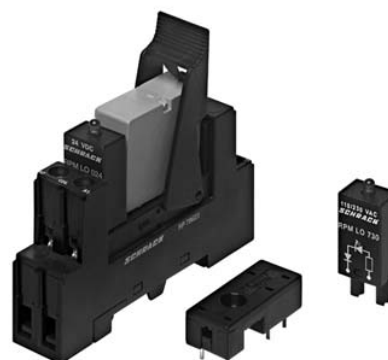


**Accessories PCB Relay Card Relay E**

- Socket with PCB- or screw terminals
- No reduction of protection class or creepage / clearance with plastic retainer
- Easy replacement of relays
- Socket can be used as connector for diagnosis function
- Sockets and accessories: RoHS compliant (Directive 2002/95/EC)  
LED- and protection modules: not RoHS compliant



F0227-A

**Socket with screw-type terminals for DIN-rail mounting**

RP 78 623 pinning 2.5 mm

**Approvals**



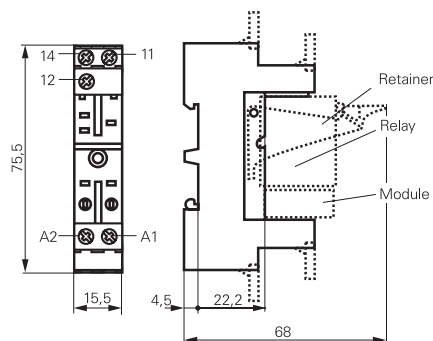
**Technical data**

**RP 78 623**

Rated current	12 A
Rated voltage / max.switching voltage AC	240/400 VAC
Dielectric strength coil-contact circuit	4000 V <sub>rms</sub>
Clearance / creepage coil-contact circuit	≥ 4/4 mm
Material group of insulation parts	≥ IIIa
Insulation to IEC 60664-1	
Type of insulation coil-contact circuit	basic
open contact circuit	functional
Rated insulation voltage	250 V
Pollution degree	2
Rated voltage system	230/400 V
Overtoltage category	III
RoHS - Directive 2002/95/EC	
Sockets, retainers and marking tags:	compliant
Degree of protection DIN 40050	IP20
Ambient temperature range	-25...+85°C
Terminals	screw
Terminal screw torque acc. IEC 61984	0.5 Nm
max.	0.7 Nm
Wire cross section	
single wire	2 x 2.5 mm <sup>2</sup>
fine wire	2 x 2.5 mm <sup>2</sup>
with bootlace crimp (DIN 46228/1)	2 x 1.5 mm <sup>2</sup>
Insertion cycles	A (10)
Max. Insertion Force total	100 N
Mounting distance	0, dense packing
Weight	31 g
Packaging unit	10 pcs



F0118-A



S0321BF

**Socket with screw-type terminals for DIN-rail mounting**

Type		Part Number
<b>RP 78 623</b>	Socket with screw-type terminals for DIN-rail mounting, pinning 2.5 mm	8-1393234-6

**Accessories for RP 78 623**

Type		Part Number
<b>RP 16 104</b>	Plastic retaining clip	1-1393161-8
<b>RY 16 040</b>	Marking tag	6-1393161-8

**LED- and Protection Modules for RP 78 623**

Easy insertion of module into the socket  
 Wiring in parallel to the coil

Type		Part Number
<b>RPM T0 0A0</b>	Protection diode 1N4007 <sup>1)</sup>	1-1393161-1
<b>RPM U0 548</b>	RC-network 24...48 VAC	1-1393161-3
<b>RPM U0 730</b>	RC-network 110...230 VAC	1-1393161-4

**LED**

<b>RPM L0 024</b>	red LED 12...24 VDC w.prot.diode <sup>1)</sup>	0-1393161-4
<b>RPM G0 024</b>	green LED 12...24 VDC w.prot.diode <sup>1)</sup>	0-1393161-3
<b>RPM L0 524</b>	red LED 12...48 VDC / VAC	0-1393161-7
<b>RPM G0 524</b>	green LED 12...48 VDC / VAC	2-1419152-4
<b>RPM L0 110</b>	red LED 60...110 VDC w.prot.diode <sup>1)</sup>	0-1393161-6
<b>RPM G0 110</b>	green LED 60...110 VDC w.prot.diode <sup>1)</sup>	2-1419152-3
<b>RPM L0 730</b>	red LED 110...230 VAC	0-1393161-8
<b>RPM G0 730</b>	green LED 110...230 VAC	2-1419152-5

<sup>1)</sup> Standard polarity: A1:+, A2:-



F0123-A

**Socket with PCB terminals**

**RP 78 600** pinning 2.5 mm

**Approvals**

**UL** US E135149

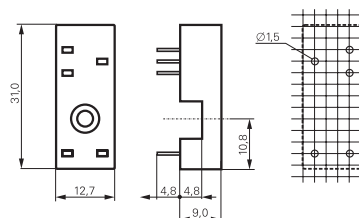
**Technical data**

**RP 78 600**

Rated current	12 A
Rated voltage / max.switching voltage AC	240/400 VAC
Dielectric strength coil-contact circuit	4000 V <sub>rms</sub>
Clearance / creepage coil-contact circuit	≥ 4/4 mm
Material group of insulation parts	≥ IIIa
Insulation to IEC 60664-1	
Type of insulation coil-contact circuit	basic
open contact circuit	functional
Rated insulation voltage	250 V
Pollution degree	2
Rated voltage system	230/400 V
Overvoltage category	III
RoHS - Directive 2002/95/EC	compliant
Degree of protection DIN 40050	IP20
Ambient temperature range	-40...+80°C
Terminals	pcb
Insertion cycles	A (10)
Max. Insertion Force total	100 N
Mounting distance	0, dense packing
Resistance to soldering heat	270°C / 10 s
Weight	3 g
Packaging unit	100 pcs



F0137-A



S0322-AE

**Socket with PCB terminals**

Type		Part Number
<b>RP 78 600</b>	Socket with PCB terminals, pinning 2.5 mm	8-1393234-3

**Accessories for RP 78 600**

<b>RP 16 100</b>	Plastic retaining clip	1-1393161-7
<b>RP 28 500</b>	Metal retaining clip	1-1393161-9