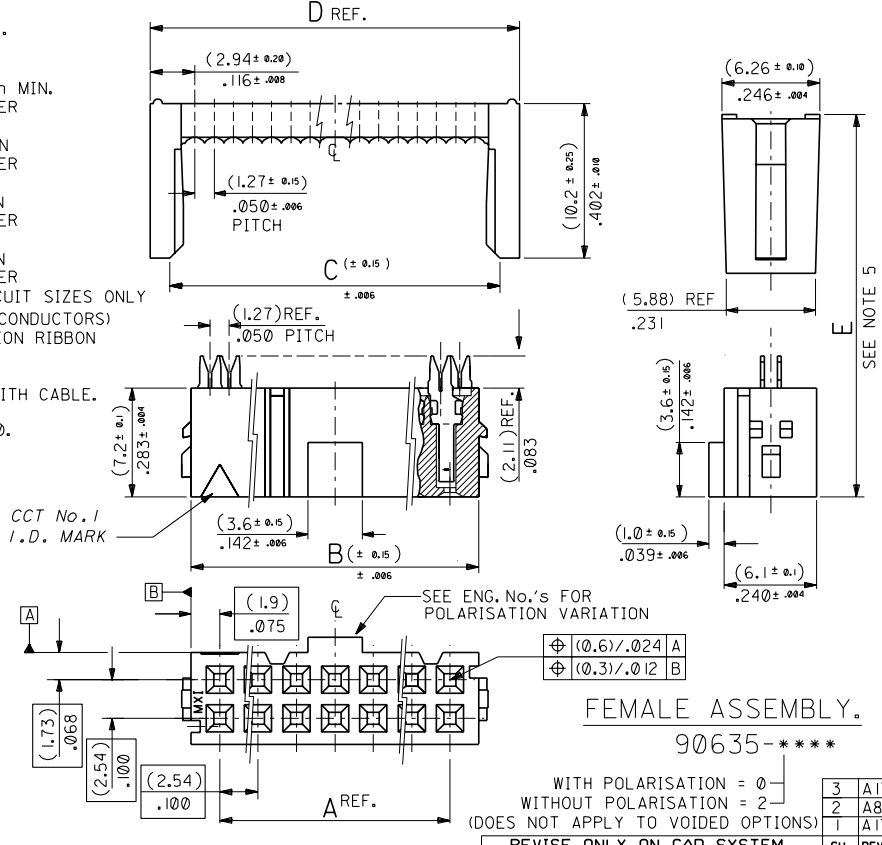


PART NO. SEE CHART  
 DWG. NO. SDA-90635

- NOTES: 1. MATERIAL:  
 HOUSING: POLYESTER, G.F. (UL 94V-0), COLOUR - BLACK.  
 TERMINAL: PHOSPHOR BRONZE.  
 2. TERMINAL PLATING:  
 90635-\*\*\*1: CONTACT AREA: GOLD FLASH (0.1um)/ 4uin MIN.  
 I.D. AREA: TIN-LEAD (lum)/ 39uin MIN. OVER NICKEL (lum)/ 39uin MIN.  
 90635-\*\*\*2: CONTACT AREA: GOLD (0.76um)/ 30uin MIN  
 I.D. AREA: TIN-LEAD (lum)/ 39uin MIN. OVER NICKEL (lum)/ 39uin MIN.  
 90635-\*\*\*3: CONTACT AREA: GOLD (0.38um)/ 15uin MIN  
 I.D. AREA: TIN-LEAD (lum)/ 39uin MIN. OVER NICKEL (lum)/ 39uin MIN.  
 90635-\*\*\*4: CONTACT AREA: GOLD (0.5lum)/ 20uin MIN  
 I.D. AREA: TIN-LEAD (lum)/ 39uin MIN. OVER NICKEL (lum)/ 39uin MIN.. 20 & 50 CIRCUIT SIZES ONLY  
 3. FOR USE WITH No. 26 & 28 AWG STRANDED WIRE (7 CONDUCTORS) AND No. 28 SOLID WIRE 1.14/(.045) DIA. MAX. INSULATION RIBBON CABLE WITH 1.27/(.050) CENTERS.  
 4. MATING STRAIN RELIEF: MOLEX No. 90170.  
 5. DIMENSION 'E' IS TOTAL HEIGHT AFTER ASSEMBLED WITH CABLE.  
 E = 10.5/(.413) REF. WITHOUT STRAIN RELIEF.  
 E = (15.2)/.598 MAX. WITH STRAIN RELIEF No. 90170.  
 (14.5)/.571 REF. WHEN COMPRESSED .  
 6. FOR PRODUCT SPECIFICATION, SEE PS 99020-0015.

64	90635-64*	(78.74) 3.100	(82.54) 3.250	(83.31) 3.280	(85.88) 3.381
60	90635-60*	(73.66) 2.900	(77.46) 3.050	(78.23) 3.080	(80.80) 3.181
50	90635-50*	(60.96) 2.400	(64.76) 2.55	(65.53) 2.580	(68.10) 2.681
40	90635-40*	(48.26) 1.900	(52.06) 2.050	(52.83) 2.080	(55.40) 2.181
34	90635-34*	(40.64) 1.600	(44.44) 1.750	(45.21) 1.780	(47.78) 1.881
30	90635-30*	(35.56) 1.400	(39.36) 1.550	(40.13) 1.580	(42.70) 1.681
26	90635-26*	(30.48) 1.200	(34.28) 1.350	(35.05) 1.380	(37.62) 1.481
24	90635-24*	(27.94) 1.100	(31.74) 1.250	(32.51) 1.280	(35.08) 1.381
20	90635-20*	(22.86) .900	(26.66) 1.050	(27.43) 1.080	(30.00) 1.181
16	90635-16*	(17.78) .700	(21.58) .850	(22.35) .880	(24.92) .981
14	90635-14*	(15.24) .600	(19.04) .750	(19.81) .780	(22.38) .881
10	90635-10*	(10.16) .400	(13.96) .550	(14.73) .580	(17.30) .681
NO. OF CKT.	ENG. NO.	A	B	C	D REF.



FEMALE ASSEMBLY.  
 90635-\*\*\*\*

WITH POLARISATION = 0  
 WITHOUT POLARISATION = 2  
 (DOES NOT APPLY TO VOIDED OPTIONS)

3	A17
2	A8
1	A17
SH.	REV.

FOR PREVIOUS DRAWING ISSUES SEE MRI.

ADDED VOIDED OPTION ECN E80429

30 MARCH 1998 MICIR REVISIONS

UNLESS OTHERWISE SPECIFIED TOLERANCES: ANGULAR ± 8°

3 PLACE ±	--
2 PLACE ±	# --
1 PLACE ±	# --

DRAFT WHERE APPLICABLE MUST REMAIN WITHIN DIMENSIONS

DESIGN DIMENSION (PRIMARY)	Ø (MM)
EQUIVALENT DIMENSION (SECONDARY)	Ø (IN)

SCALE: 4 : 1

DRWG BY: POB

CHK'D BY:

APP'D BY:

CAD/CAM FILENAME: S49635X1 DGN

THIS DRAWING CONTAINS INFORMATION THAT IS PROPRIETARY TO MOLEX INC. & SHOULD NOT BE USED WITHOUT WRITTEN PERMISSION

REVISE ONLY ON CAD SYSTEM

TITLE: QIK FLECS SINGLE BEAM FEMALE ASSEMBLY

MOLEX EUROPE

SHEET NO. DATE: 1 OF 3 25/ 9/90

PART NO. SEE CHART

DWG NO. SDA-90635

SIZE: B

