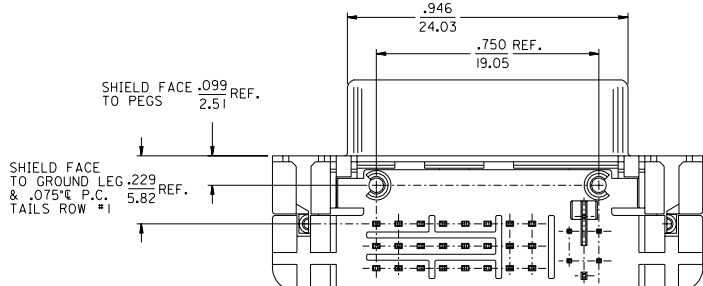
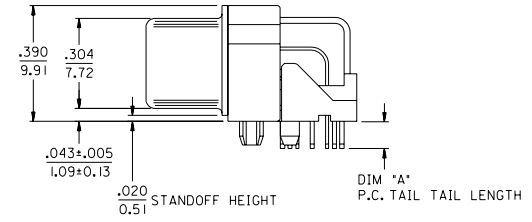
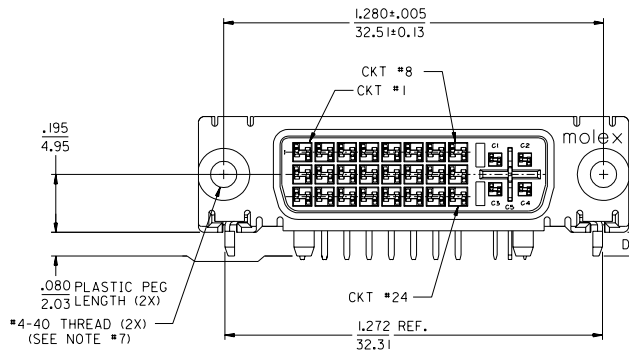


NOTES:

- MATERIALS:
SHIELD -- DEEP DRAW STEEL.
HOUSING -- GLASS FILLED POLYMER, NATURAL (WHITE), UL 94v-0.
TAIL ALIGNER -- GLASS FILLED POLYMER, NATURAL (WHITE), UL 94v-0.
CONTACTS -- COPPER ALLOY.
MICROCROSS GROUND -- COPPER ALLOY.
 - PLATING: SEE SHEET 2
 - PRODUCT CONFORMS TO MOLEX PRODUCT SPECIFICATION NUMBER PS-74320-001. REFER TO THIS SPECIFICATION FOR SPACING ON A P.C.B. OF TWO OR MORE CONNECTORS WHEN USING A CABLE OR AN ADAPTER ASSEMBLY.
 - SEE SHEET 2 FOR RECOMMENDED PANEL CUT-OUT AND P.C.B. LAYOUT.
 - PARTS WILL BE PACKAGED IN TRAYS PER PK-74320-010.
 - PRODUCT CONFORMS TO DDWG DVI SPECIFICATION. REFER TO THIS SPECIFICATION FOR CONNECTOR MATING DIMENSIONS.
 - RECOMMENDED MOUNTING HARDWARE IS MOLEX P/N 71781-0001 OR 82007-0300 OR 88780-6066.
REFER TO PRODUCT SPECIFICATION NUMBER PS-74320-001 FOR THE APPLICATION TORQUE REQUIREMENT FOR ASSEMBLING MOUNTING HARDWARE.
- ⚠ CAVITY ID AND MANUFACTURING PLANT CODE.



PART NUMBER	PLATING OPTION	DIM "A"	DIM "B"
74320-1000	1	.092/2.34	.080±.020
74320-1001	1	.050/1.27	2.03±0.51
74320-1003	1	.123/3.12	.110/2.79
74320-1004	2	.092/2.34	.080±.020
74320-1005	2	.050/1.27	2.03±0.51
74320-1006	2	.110/2.79	.110/2.79
74320-1007	2	.123/3.12	.110/2.79

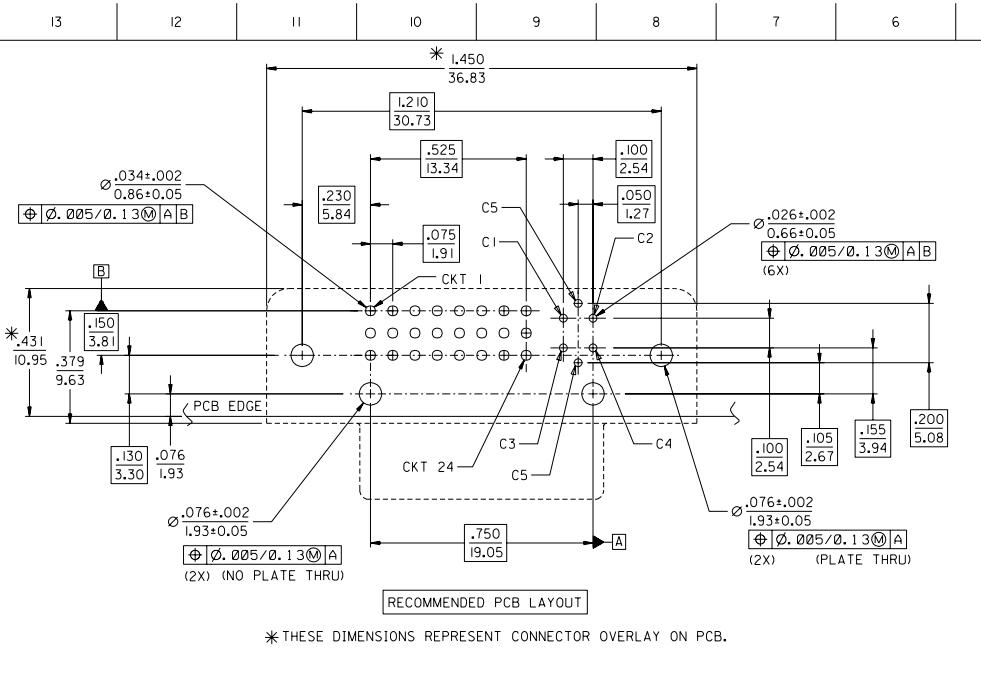
REV	DESCRIPTION
1	MODIFICATION

QUALITY SYMBOLS
MAJOR
CRITICAL

GENERAL TOLERANCES: (UNLESS SPECIFIED)
4 PLACES ±0.10
3 PLACES ±0.15
2 PLACES ±0.25
1 PLACE ±0.25
ANGULAR: ± 1/2°

SCALE	DESIGN UNITS
4 : 1	<input type="checkbox"/> mm <input checked="" type="checkbox"/> INCH
DRAWN BY & DATE	MOSULLIV 99/02/12
CHECKED BY & DATE	MOSULLIV 99/02/12
APPROVED BY & DATE	NELLIGAN 99/02/15
CAD FILENAME	SD7432000.LS01

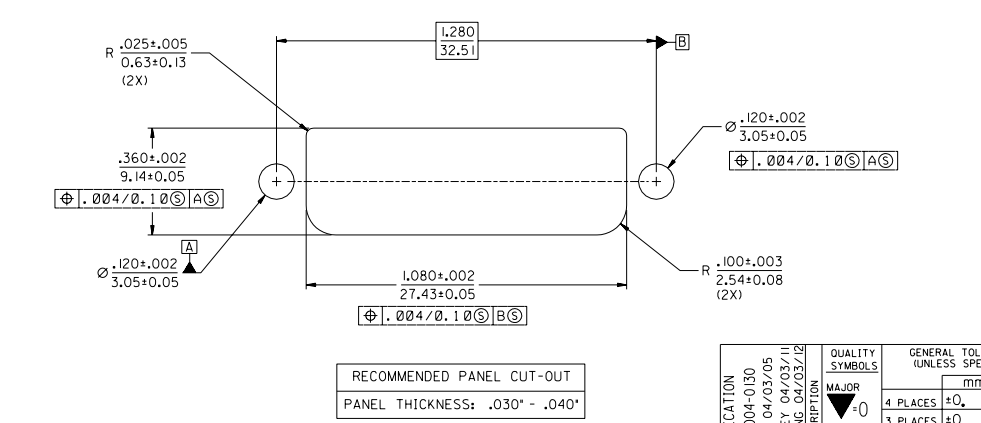
TITLE:	DIMENSIONS:	SHT	REV
DVI - INTERGRATED RIGHT ANGLE RECEPTACLE CONNECTOR	<input type="checkbox"/> INCH <input checked="" type="checkbox"/> mm		
MATERIAL NO. SEE CHART	<input type="checkbox"/> INCH <input checked="" type="checkbox"/> mm		
DRAWING NO. SD-74320-001	<input type="checkbox"/> INCH <input checked="" type="checkbox"/> mm		
MATERIAL NO. SEE CHART	<input type="checkbox"/> INCH <input checked="" type="checkbox"/> mm		
DRAWING NO. SD-74320-001	<input type="checkbox"/> INCH <input checked="" type="checkbox"/> mm		
SHEET NO. 1 OF 2	<input type="checkbox"/> INCH <input checked="" type="checkbox"/> mm		
SIZE C	<input type="checkbox"/> INCH <input checked="" type="checkbox"/> mm		



PLATING OPTIONS:

PLATING OPTION #1:
 OUTER SHIELD -- 150u"/(3.75um) MIN. BRIGHT TIN OVER
 50u"/(1.27um) MIN. NICKEL OVER COPPER FLASH.
 .075"/(1.91mm) CONTACTS -- 30u"/(0.75um) MIN. SELECT GOLD AND
 100u"/(2.50um) MIN. SELECT PURE TIN
 OVER 50u"/(1.27um) MIN. NICKEL OVERALL.
 .100"/(2.54mm) CONTACTS -- 30u"/(0.75um) MIN. SELECT GOLD AND
 100u"/(2.50um) MIN. SELECT PURE TIN.
 OVER 50u"/(1.27um) MIN. NICKEL OVERALL.
 MICROCROSS GROUND -- 30u"/(0.75um) MIN. SELECT GOLD AND
 100u"/(2.50um) MIN. SELECT PURE TIN.
 OVER 50u"/(1.27um) MIN. NICKEL OVERALL.

PLATING OPTION #2:
 OUTER SHIELD -- 150u"/(3.75um) MIN. BRIGHT TIN OVER
 50u"/(1.27um) MIN. NICKEL OVER COPPER FLASH.
 .075"/(1.91mm) CONTACTS -- SELECT GOLD FLASH AND
 100u"/(2.50um) MIN. SELECT PURE TIN
 OVER 50u"/(1.27um) MIN. NICKEL OVERALL.
 .100"/(2.54mm) CONTACTS -- SELECT GOLD FLASH AND
 100u"/(2.50um) MIN. SELECT PURE TIN
 OVER 50u"/(1.27um) MIN. NICKEL OVERALL.
 MICROCROSS GROUND -- 30u"/(0.75um) MIN. SELECT GOLD AND
 100u"/(2.50um) MIN. SELECT PURE TIN
 OVER 50u"/(1.27um) MIN. NICKEL OVERALL.



RECOMMENDED PANEL CUT-OUT
 PANEL THICKNESS: .030" - .040"

MODIFICATION EC NO. SH2004-0130 DRAWN/DXLE 04/03/05 CHK: HARVEY 04/03/11 APPR: SHUANG 04/03/12	QUALITY SYMBOLS	GENERAL TOLERANCES: (UNLESS SPECIFIED)	SCALE 4 : 1	DESIGN UNITS <input type="checkbox"/> mm <input checked="" type="checkbox"/> INCH	THIRD ANGLE PROJECTION	DIMENSIONS: <input type="checkbox"/> mm <input checked="" type="checkbox"/> INCH	SHT	REV		
	MAJOR	4 PLACES ±0.010	4 : 1	INCH	<input type="checkbox"/> INCH <input checked="" type="checkbox"/> mm	ONLY				
	CRITICAL	3 PLACES ±0.025			<input type="checkbox"/> mm <input checked="" type="checkbox"/> INCH	ONLY				
		1 PLACE ±0.25			<input type="checkbox"/> mm <input checked="" type="checkbox"/> INCH	ONLY				
DESCRIPTION	ANGULAR: ± 1/2°	DRAFT WHERE APPLICABLE MUST REMAIN WITHIN DIMENSIONS	DRAWN BY & DATE MOSULLIV 99/02/12	CHECKED BY & DATE MOSULLIV 99/02/12	APPROVED BY & DATE NELLIGAN 99/02/15	CAD FILENAME SD74320001.S02	MATERIAL NO. SEE CHART	DRAWING NO. SD-74320-001	SHEET NO. 2	REVISE ON CAD ONLY
REV	THIS DRAWING CONTAINS INFORMATION THAT IS PROPRIETARY TO MOLEX INCORPORATED AND SHOULD NOT BE USED WITHOUT WRITTEN PERMISSION.		TITLE: DVI - INTERGRATED RIGHT ANGLE RECEPTACLE CONNECTOR		MOLEX MOLEX INCORPORATED					