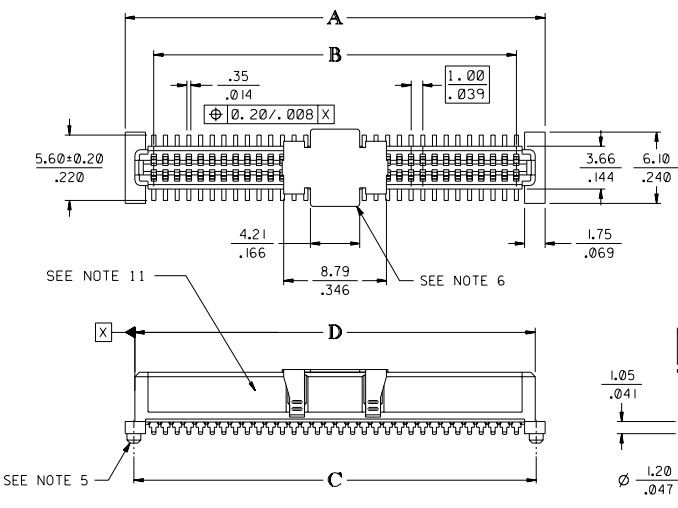


13 12 11 10 9 8 7 6

71439

4 3 2 1



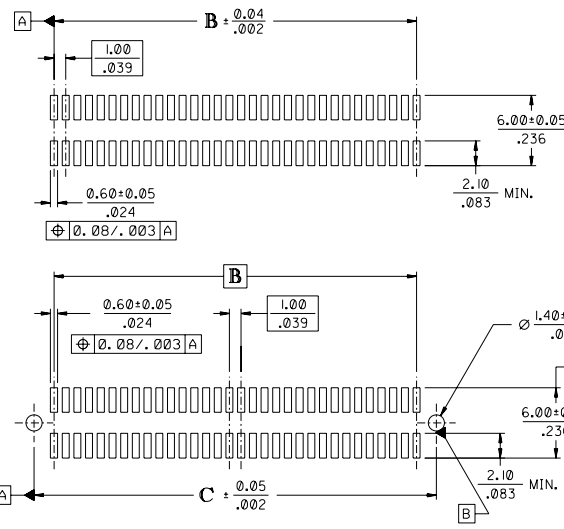
CIRCUIT SIZE	DIM. A	DIM. B	DIM. C	DIM. D
20	13.90 .547	9.00 .354	12.40 .488	12.22 .481
30	18.90 .744	14.00 .551	17.40 .685	17.22 .678
40	23.90 .941	19.00 .748	22.40 .882	22.22 .875
50	28.90 1.138	24.00 .945	27.40 1.079	27.22 1.072
60	33.90 1.335	29.00 1.142	32.40 1.276	32.22 1.269
64	35.90 1.413	31.00 1.220	34.40 1.354	34.22 1.347
70	38.90 1.531	34.00 1.339	37.40 1.472	37.22 1.465
80	43.90 1.728	39.00 1.535	42.40 1.669	42.22 1.662
84	45.90 1.807	41.00 1.614	44.40 1.748	44.22 1.741
90	48.90 1.925	44.00 1.732	47.40 1.866	47.22 1.859
100	53.90 2.122	49.00 1.929	52.40 2.063	52.22 2.056
110	58.90 2.319	54.00 2.126	57.40 2.260	57.22 2.253
120	63.90 2.516	59.00 2.323	62.40 2.457	62.22 2.450

NOTES:

- HOUSING MATERIAL: GLASS FILLED THERMOPLASTIC; UL 94V-0; SEE SHEET 2 FOR COLOR. TERMINAL MATERIAL: PHOSPHOR BRONZE; 0.205/.0080 THICK VACUUM CAP MATERIAL: STAINLESS STEEL; 0.255/.0100 THICK
- CONTACT PLATING FINISH: REFER TO CHART ON SHEET 2
- THIS PART, WHEN MATED WITH MOLEX 1.0mm PLUG CONNECTOR SERIES 71439, CONFORMS TO MOLEX PRODUCT SPECIFICATION PS-71436-9999. REFER TO CHART ON SHEET 2 FOR MATED STACK HEIGHTS FOR THIS RECEPTACLE.
- PACKAGING SPECIFICATIONS: REFER TO CHART ON SHEET 2.
- PEGS ARE OPTIONAL. REFER TO CHART ON SHEET 2.
- VACUUM PICK & PLACE CAP IS OPTIONAL. REFER TO CHART ON SHEET 2.
- THIS PART CONFORMS TO EIA STANDARD 700 AAAB FOR 1.0mm TWO-PART CONNECTORS FOR USE WITH PARALLEL PRINTED BOARDS.
- COPLANARITY OF SMT TAILS: 0.10 MM/.004 INCH MAXIMUM
- 64-CIRCUIT RECEPTACLE ASSEMBLY WITH PEGS AND VACUUM CAP SHOWN FOR ILLUSTRATION PURPOSES ONLY.
- INCH DIMENSIONS SHOWN FOR REFERENCE ONLY.
- ASSEMBLY TO HAVE DATE CODE: XX XX WEEK YEAR

DIMENSIONS UNITS ARE $\frac{MM}{INCH}$

2	H
1	H
MFG, SH, REV.	



RECOMMENDED PCB LAYOUT (WITH AND WITHOUT PEGS)
RECOMMENDED PCB THICKNESS: 1.00±0.10/.039±.004

	FI	E	D	CI
	CORRECT TYPO ECN# UDT2002-0890 DMORGAN 02/01/03	CHG TO BLACK CAP ON 71439-0964 ECN #UDT1999-0018 DMORGAN 98/07/09	UNLESS OTHERWISE SPECIFIED TOLERANCES ANGULAR ±1/2° INCH METRIC 3 PLACE 2----- ±----- 2 PLACE 2----- ±----- 1 PLACE 2----- ±-----	REVISIONS
H	CHG PK FOR -0164 ECN UCP2003-2037 RWWHITE 03/04/04	REVISE NOTES ECN UDT2001-0404 SCHAFFER 00/10/06	ADD -0364 PER ECN U81534 MCFARLA 98-1-23	REVISIONS
G	ADD -0264 ECN UCP2003-0733 BBARKER 02/10/31	ADD P/N's PER UDT1999-0671 SWEENEY 99/02/15	REVISED PER ECN # U71440 RESENDEZ 97/5/21	REVISIONS
LTR.	REVISIONS	LTR.	REVISIONS	LTR.

REVISE ONLY ON CAD SYSTEM

TITLE SALES ASSY. 1.0mm BOARD-TO-BOARD RECEPTACLE CONNECTOR, 5.30/.209 STACK HEIGHT

MOLEX INCORPORATED SHEET NO. DATE
LITLLEALL 69532 U.S.A. 1 OF 2 03/23/95

PART NO. DRWG. NO.
SEE SHEET 2 SDA-71439-0***

NO DRAWING CONTENTS INFORMATION SHALL BE PROPRIETARY TO MOLEX INC. AND SHOULD NOT BE USED WITHOUT WRITTEN PERMISSION. UJPC

DRWG. BY REED SCALE 4 : 1
APP'D BY BILXER

13 12 11 10 9 8 7 6 5 4 3 2 1

WHITE (NATURAL) MATERIAL

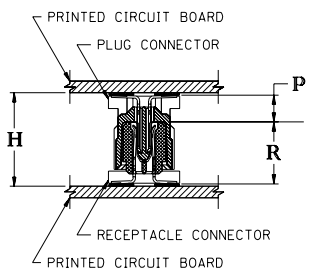
PART NUMBER	CIRCUIT SIZE	CONTACT PLATING SEE NOTE BELOW CHARTS	PEGS	PICK & PLACE CAP	PACKAGING SPEC. NUMBER	PACKAGING TYPE
71439-0164	64	30 GOLD	YES	NO	PK-70873-0601	TUBE
71439-0264	64	50 GOLD	NO	YES	PK-70873-0631	TAPE & REEL
71439-0364	64	30 GOLD	YES	YES	PK-70873-0607	TUBE
71439-0464	64	30 GOLD	YES	YES	PK-70873-0631	TAPE & REEL
71439-0564	64	30 GOLD	NO	NO	PK-70873-0683	TAPE & REEL
71439-0764	64	30 GOLD	NO	YES	PK-70873-0606	TUBE
71439-0864	64	30 GOLD	NO	YES	PK-70873-0631	TAPE & REEL

BLACK MATERIAL WITH MATTE PICK & PLACE CAP

PART NUMBER	CIRCUIT SIZE	CONTACT PLATING SEE NOTE BELOW CHARTS	PEGS	PICK & PLACE CAP	PACKAGING SPEC. NUMBER	PACKAGING TYPE
71439-0964	64	30 GOLD	NO	YES	PK-70873-0631	TAPE & REEL

CONTACT PLATING:

- 30 GOLD - 0.76 MICROMETER/30 MICROINCH MINIMUM GOLD IN CONTACT AREA AND 1.91 MICROMETER/75 MICROINCH MINIMUM TIN-LEAD IN SOLDER TAIL AREA. NICKEL UNDERPLATE OVER ENTIRE TERMINAL.
- 50 GOLD - 1.27 MICROMETER/50 MICROINCH MINIMUM GOLD IN CONTACT AREA AND 1.91 MICROMETER/75 MICROINCH MINIMUM TIN-LEAD IN SOLDER TAIL AREA. NICKEL UNDERPLATE OVER ENTIRE TERMINAL.



$$\begin{aligned} & \text{PLUG STACK HEIGHT} \\ & + \text{RECEPTACLE STACK HEIGHT} \\ & + 0.40 / .016 \text{ (SOLDER PASTE ALLOWANCE)} \\ & = \text{MATED STACK HEIGHT} \end{aligned}$$

P = PLUG STACK HEIGHT
R = RECEPTACLE STACK HEIGHT
H = MATED STACK HEIGHT

RECOMMENDED PLUG/RECEPTACLE COMBINATION FOR MATED STACK HEIGHT PER EIA STANDARD 700 A AAB

MATED STACK HEIGHT	RECEPTACLE HEIGHT	RECEPTACLE SERIES NO.	PLUG HEIGHT	PLUG SERIES NO.
8.00/.315	5.30/.209	71439-0***	2.30/.090	71436-0***
9.00/.354	5.30/.209	71439-0***	3.30/.130	71436-1***
10.00/.394	5.30/.209	71439-0***	4.30/.169	71436-2***

DIMENSIONS UNITS ARE $\frac{\text{MM}}{\text{INCH}}$

	EI	SEE SHEET I	UNLESS OTHERWISE SPECIFIED TOLERANCES: ANGULAR $\pm 1/2^\circ$		REVISIONS ONLY ON CAD SYSTEM	
	E	SEE SHEET I	INCH METRIC		SALES ASSY, 1.0mm BOARD-TO-BOARD RECEPTACLE CONNECTOR, 5.30/.209 STACK HEIGHT	
	D	SEE SHEET I	3 PLACE ± ---- ± ----		MOLEX INCORPORATED U.S.A. SHEET NO. 2 DATE 03/23/95	
H	SEE SHEET I	CI	SEE SHEET I	1 PLACE ---- ± ----		DRG. NO. SDA-71439-0***
G	SEE SHEET I	C	SEE SHEET I	DRAFT WHERE APPLICABLE MUST REMAIN WITHIN DIMENSIONS		FILE NAME 57143902.DWG
FI	SEE SHEET I	B	SEE SHEET I	APP'D BY BIXLER	RECD BY SCALE NONE	NO DRAWING CONTAINS INFORMATION THAT IS PROPRIETARY TO MOLEX INC. AND SHOULD NOT BE USED WITHOUT WRITTEN PERMISSION. CPPI C
F	SEE SHEET I	A	SEE SHEET I			
LTR.	REVISIONS	LTR.	REVISIONS			