

FEATURES AND SPECIFICATIONS

Features and Benefits

- Sizes 2 to 10 circuits

Reference Information

Packaging: Bag
 Use With: 50125/50133
 Mates With: 51021
 Designed In: Millimeters

Electrical

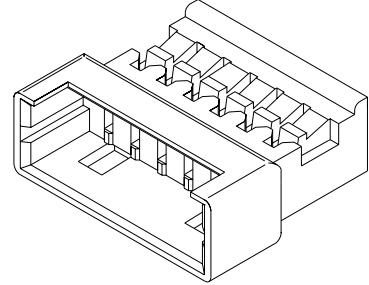
Voltage: 125V
 Current: 1.0A
 32 AWG—0.8A
 Contact Resistance: 20mΩ max.
 Dielectric Withstanding Voltage: 250V AC/1 min.
 Insulation Resistance: 100 MΩ min.

Physical

Housing: PBTP, UL 94V-0
 Operating Temperature: -40 to +85°C

molex® 1.25mm (.049") Pitch Wire-to-Wire Plug

51047



0.40 to 1.60mm (.016 to .063") Pitch

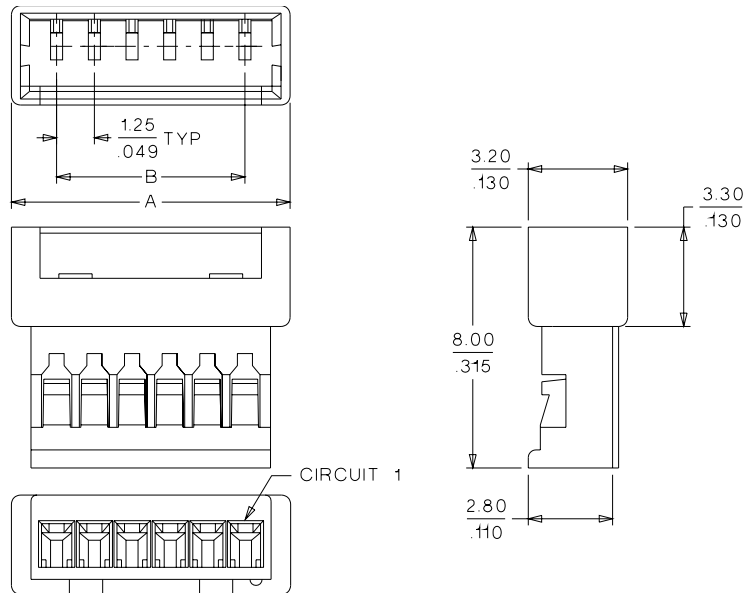
A

Mating Dimensions

51047 • 50125/50133
 51021 • 50079/50058
 W=9.0mm



CATALOG DRAWING (FOR REFERENCE ONLY)



ORDERING INFORMATION AND DIMENSIONS

Circuits	Order No.	Dimension	
		A	B
2	51047-0200	4.25 (.167)	1.25 (.049)
3	51047-0300	5.50 (.217)	2.50 (.098)
4	51047-0400	6.75 (.268)	3.75 (.147)
5	51047-0500	8.00 (.315)	5.00 (.196)
6	51047-0600	9.25 (.364)	6.25 (.246)
7	51047-0700	10.50 (.413)	7.50 (.295)
8	51047-0800	11.75 (.463)	8.75 (.344)
9	51047-0900	13.00 (.512)	10.00 (.393)
10	51047-1000	14.25 (.561)	11.25 (.442)