

INTRODUCTION

Molex's new 1.25mm pitch SMT CLIK-Mate series has a superior lock design that offers easier use and better mating retention compared to competitive versions. The system also provides about 60% space savings compared to similar dual-lock 2.00mm pitch versions.

CLIK-Mate 1.25 was designed for applications such as LCD TVs that require higher pin count connectors to carry more signal lines in less space. The system has a similar design to Molex's CLIK-Mate 2.0 family and includes many of the same features such as a unique tuning-fork terminal concept that provides low insertion force and secure mating contact.

The system is available in both vertical and right angle versions in 2-15 circuits to meet various application needs.



1.25mm (.049") Pitch CLIK-Mate™ SMT WTB Connectors

**Series 502380, 502381,
502382, 502386**

Specifications:

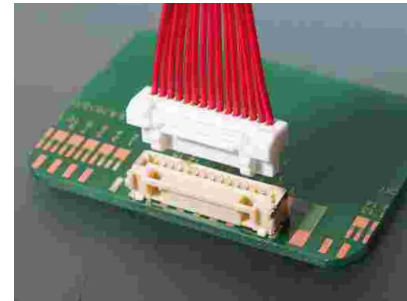
- Current: 1.0A
- Voltage: 50V
- Contact Resistance: 20 milliohms max.
- Dielectric Withstanding Voltage: 500V AC
- Insulation Resistance: 100 Megohms minimum
- Operating Temperature: -25 to +85°C
- Packaging: PCB Receptacles — Embossed Tape
Housing — Bag
Terminal — Reel

Features

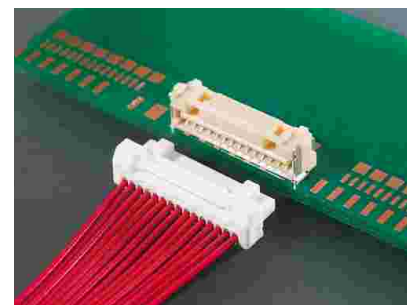
- Robust dual positive inner locks (single positive lock below 8 circuits)
- Tuning fork style contact design
- Low insertion force
- Reinforced metal solder tabs
- Flat area for pick-and-place

Benefits

- Audible "click", low insertion force and secure mating
- Secure contact, and avoids terminal stubbing
- Easy and quick mating for operators
- Housing wall support and secure PCB retention
- No costly capton tape needed



Straight



Right Angle

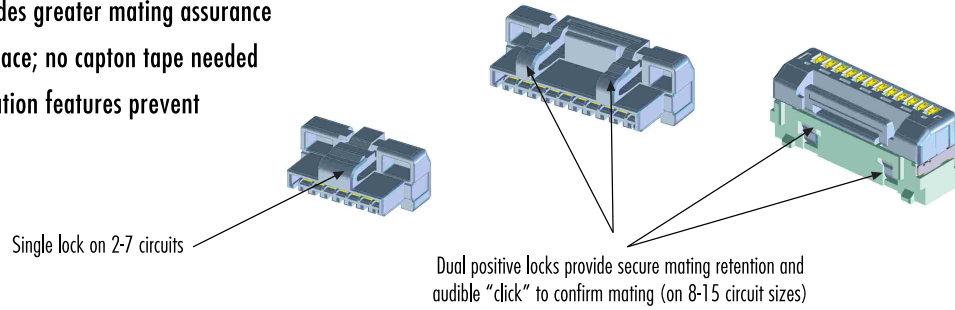
MARKETS AND APPLICATIONS

- LCD/PDP TVs
- Pachinko/Gaming
- Data Communication equipment
- Any application requiring superior mating assurance



Key Benefits of CLIK-Mate™

- Robust positive lock provides greater mating assurance
- Direct vacuum pick-and-place; no capton tape needed
- Superior terminal polarization features prevent wrong terminal insertion



ORDERING INFORMATION

Crimp Terminal

Order No.	Packaging
502381-0000	Chain

Crimp Housing

Order No.	Circuit Sizes
502380-XX00	02 to 15

Replace XX with circuit size number

PCB Receptacles (Vertical)

Order No.	Circuit Sizes
502382-XX70	02 to 15

Replace XX with circuit size number

PCB Receptacles (Right Angle)

Order No.	Circuit Sizes
502386-XX70	02 to 15

Replace XX with circuit size number

molex[®]
one company › a world of innovation

Americas Headquarters

2222 Wellington Ct,
Lisle, Illinois 60532 USA
Tel: 1-800-78MOLEX
amerinfo@molex.com

Asia Pacific North Headquarters

Yamato, Kanagawa, Japan
Tel: 81-46-265-2325
apninfo@molex.com

Asia Pacific South Headquarters

Jurong, Singapore
Tel: 65-6-268-6868
apsinfo@molex.com

European Headquarters

Munich, Germany
Tel: 49-89-413092-0
euroinfo@molex.com

Corporate Headquarters

2222 Wellington Ct,
Lisle, Illinois 60532 USA
Tel: 630-969-4550

Visit our website at www.molex.com