

FEATURES AND SPECIFICATIONS

Features and Benefits

- Spring beam design provides high pressure and small deflection for high vibration applications
- Locking tang for secure housing retention

Reference Information

Packaging: Reel or bag

Use With: 51005

Mates With: 50012

Designed In: Millimeters

Electrical

Voltage: 125V

Current:

AWG	24	26	28
Amperes	2.0	1.5	1.0

Contact Resistance: 20mΩ max.

Dielectric Withstanding Voltage: 500V AC/1 min.

Insulation Resistance: 1000 MΩ min.

Physical

Contact: Phosphor Bronze

Plating: Tin

Wire Range: 24 to 28 AWG

Insulation Diameter: 1.15mm dia. max.

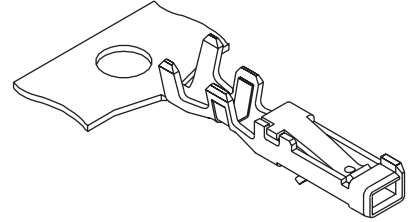
Strip Length: 1.70 to 2.30mm



2.00mm (.079") Pitch Wire-to-Wire Crimp Terminal

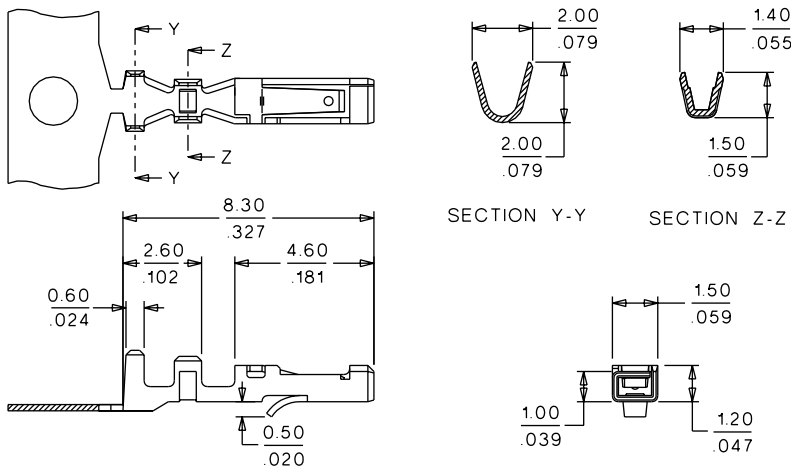
50013

Female



2.00 to 2.50mm (.079 to .098") Pitch

CATALOG DRAWING (FOR REFERENCE ONLY)



ORDERING INFORMATION

Order No.	Terminal
50013-8000	Reel
50013-8100	Bag