

## FEATURES AND SPECIFICATIONS

### Features and Benefits

- Locking tang for secure housing retention

### Reference Information

Packaging: Reel or bag

Use With: [51006](#)

Mates With: [50013](#)

Designed In: Millimeters

### Electrical

Voltage: 125V

Current:

AWG	24	26	28
Amperes	2.0	1.5	1.0

Contact Resistance: 20mΩ max.

Dielectric Withstanding Voltage: 500V AC/1 min.

Insulation Resistance: 1000 MΩ min.

### Physical

Contact: Phosphor Bronze

Plating: Tin

Wire Range: 24 to 28 AWG

Insulation Diameter: 1.15mm dia. max.

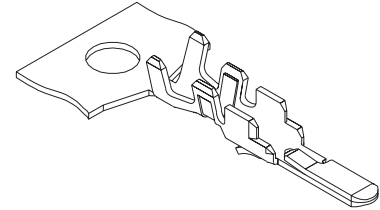
Strip Length: 1.70 to 2.30mm



## 2.00mm (.079") Pitch Wire-To-Wire Crimp Terminal

**50012**

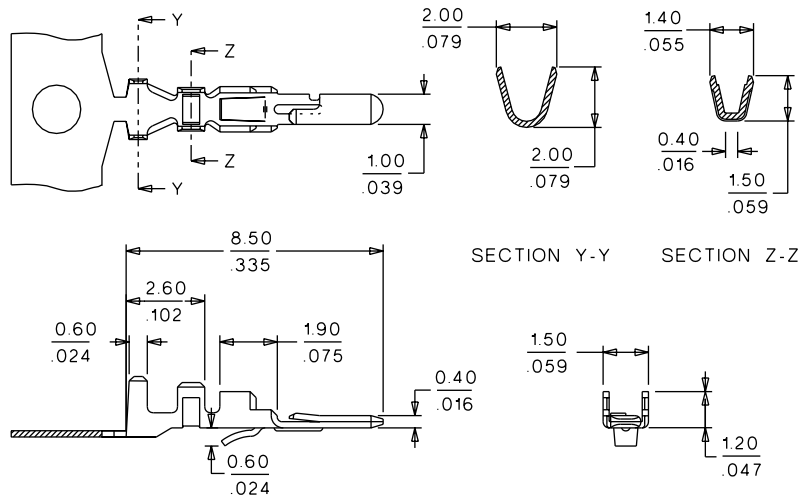
**Male**



**B**

2.00 to 2.50mm (.079 to .098") Pitch

## CATALOG DRAWING (FOR REFERENCE ONLY)



## ORDERING INFORMATION

Order No.	Terminal
50012-8000	Reel
50012-8100	Bag