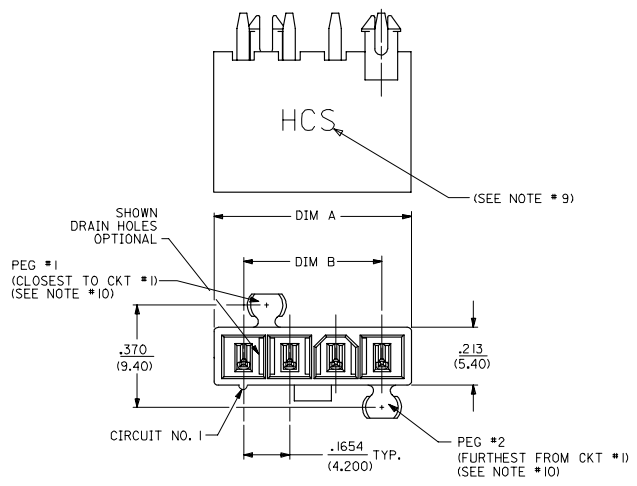
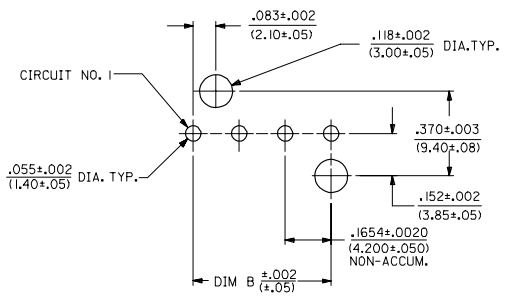
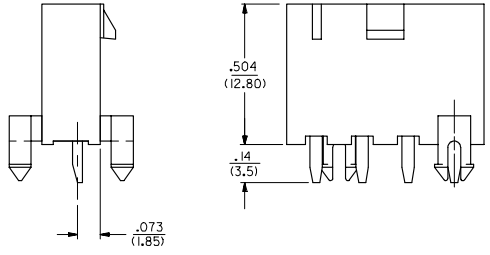


CKT SIZE	DIM A	DIM B
4	.709 (18.00)	.496 (12.60)
5	.874 (22.20)	.661 (16.80)
6	1.039 (26.40)	.827 (21.00)
7	1.205 (30.60)	.992 (25.20)
8	1.370 (34.80)	1.157 (29.40)
9	1.535 (39.00)	1.323 (33.60)
10	1.701 (43.20)	1.488 (37.80)
11	1.866 (47.40)	1.654 (42.00)
12	2.031 (51.60)	1.819 (46.20)



- NOTES:
- MATERIALS:
HOUSING:
*1"-NYLON 6/6, UL94 V-2, COLOR: NATURAL
*2"-NYLON 6/6, UL94 V-0, COLOR: NATURAL
*3"-NYLON 6/6, UL94 V-2, COLOR: BLACK
TERMINALS:
COPPER ALLOY
 - TERMINAL PLATING:
*1"=.000100/(0.00254) MIN. BRIGHT TIN OVER .000050/(0.00127) MIN. NICKEL
*2"=.000030/(0.00076) MIN. SELECT GOLD AND .000100/(0.00254) MIN. SELECT MATTE TIN OVER .000050/(0.00127) MIN. NICKEL OVERALL
*3"=.000100/(0.00254) MIN. MATTE TIN OVER .000050/(0.00127) MIN. NICKEL
*THE PRIMARY SHIPPING CARTON WILL BE LABELED "ELV AND ROHS COMPLIANT", CARTONS WITHOUT THIS LABEL MAY CONTAIN PRODUCT WITH TIN-LEAD PLATING.
 - PRODUCT SPECIFICATION: PS-44476-001
 - PACKAGING: SEE CHARTS
 - PART MATES WITH MINI-FIT JR. RECEPTACLE NO. 5557.
 - PART IS NOT DESIGNED FOR CURRENT SHARING.
 - PARTS ARE NOT TO BE MATED OR UN-MATED WHILE CIRCUITS ARE LIVE.
 - 44472-2470 ONLY FOR WIDER LOCKING RAMP.
 - PARTS PRODUCED AFTER JULY 1, 2004 WILL HAVE "HCS" MARKING INSTEAD OF BLACK STRIPE.
 - SEE CHART FOR PARTS WITH PEGS REMOVED.
 - PART CONFORMS TO CLASS 'B' REQUIREMENTS OF COSMETIC SPECIFICATION PS-45499-002.

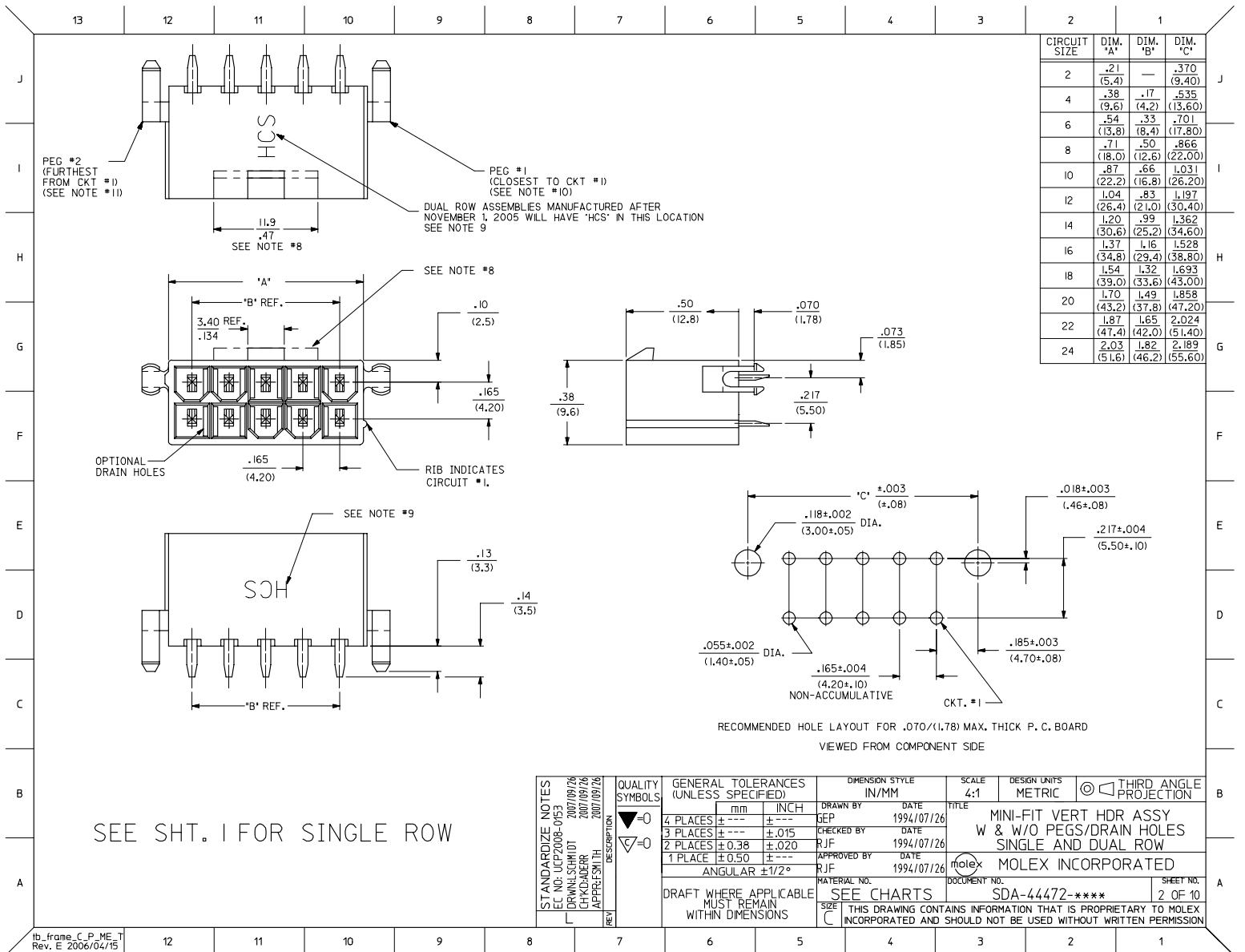


10	L
9	L
8	L
7	L
6	L
5	L
4	L
3	L
2	L
1	L
SHT	REV

LEGEND:
44472 - ** **
CIRCUIT SIZE
(04-12 FOR SINGLE ROW)
(02-24 FOR DUAL ROW)
ASSEMBLY VERSION
(01 THRU 49 FOR SINGLE ROW)
(50 THRU 99 FOR DUAL ROW)

SEE SHT. 2 FOR DUAL ROW
• THE CHART FOR SINGLE ROW PRODUCT IS ON PAGE 7

STANDARDIZE NOTES EC NO: UCP2008-0163 DRAWN/SCHMIDT 2007/09/26 CHK/BAKER 2007/09/26 APPR/SWINTH 2007/09/26	QUALITY SYMBOLS ▽=0 ▽=0	GENERAL TOLERANCES (UNLESS SPECIFIED)	DIMENSION STYLE IN/MM	SCALE 4:1	DESIGN UNITS METRIC	THIRD ANGLE PROJECTION	
		4 PLACES ±.005 ±.005 3 PLACES ±.010 ±.010 2 PLACES ±.020 ±.020 1 PLACE ±.050 ±.050	DRAWN BY SEP	DATE 1994/07/25	TITLE MINI-FIT VERT HDR ASSY W & W/O PEGS/DRAIN HOLES SINGLE AND DUAL ROW		
		ANGULAR ±1/2°	CHECKED BY R/JF	DATE 1994/07/25	APPROVED BY R/JF	DATE 1994/07/25	MOLEX INCORPORATED
		DRAFT WHERE APPLICABLE MUST REMAIN WITHIN DIMENSIONS	MATERIAL NO. SEE CHARTS	DOCUMENT NO. SDA-44472-****	SHEET NO. 1 OF 10	THIS DRAWING CONTAINS INFORMATION THAT IS PROPRIETARY TO MOLEX INCORPORATED AND SHOULD NOT BE USED WITHOUT WRITTEN PERMISSION	



CIRCUIT SIZE	DIM. 'A'	DIM. 'B'	DIM. 'C'
2	.21 (5.4)	—	.370 (9.40)
4	.38 (9.6)	.17 (4.2)	.535 (13.60)
6	.54 (13.8)	.33 (8.4)	.701 (17.80)
8	.71 (18.0)	.50 (12.6)	.866 (22.00)
10	.87 (22.2)	.66 (16.8)	1.031 (26.20)
12	1.04 (26.4)	.83 (21.0)	1.197 (30.40)
14	1.20 (30.6)	.99 (25.2)	1.362 (34.60)
16	1.37 (34.8)	1.16 (29.4)	1.528 (38.80)
18	1.54 (39.0)	1.32 (33.6)	1.693 (43.00)
20	1.70 (43.2)	1.49 (37.8)	1.858 (47.20)
22	1.87 (47.4)	1.65 (42.0)	2.024 (51.40)
24	2.03 (51.6)	1.82 (46.2)	2.189 (55.60)

SEE SHT. I FOR SINGLE ROW

STANDARDIZE NOTES EC NO. UCP2008-0163 DRAWN/SCHMIDT 2007/09/26 CHK/ADDER 2007/09/26 APPROV/SWITH 2007/09/26	QUALITY SYMBOLS ▽=0 ▽=0	GENERAL TOLERANCES (UNLESS SPECIFIED)	DIMENSION STYLE IN/MM	SCALE 4:1	DESIGN UNITS METRIC	THIRD ANGLE PROJECTION
	4 PLACES ±.005 ±.005	mm INCH	DRAWN BY SEP	DATE 1994/07/26	TITLE MINI-FIT VERT HDR ASSY W & W/O PEGS/DRAIN HOLES SINGLE AND DUAL ROW	
	3 PLACES ±.010 ±.010		CHECKED BY R/JF	DATE 1994/07/26	MOLEX INCORPORATED	
	2 PLACES ±.038 ±.020		APPROVED BY R/JF	DATE 1994/07/26	MATERIAL NO.	DOCUMENT NO. SDA-44472-****
1 PLACE ±.050 ±.050		ANGULAR ±1/2°	DRAFT WHERE APPLICABLE MUST REMAIN WITHIN DIMENSIONS		THIS DRAWING CONTAINS INFORMATION THAT IS PROPRIETARY TO MOLEX INCORPORATED AND SHOULD NOT BE USED WITHOUT WRITTEN PERMISSION	

	13	12	11	10	9	8	7	6	5	4	3	2	1
J	PLATING: 1 (SEE NOTE 2) DRAINS: WITHOUT DRAIN HOLES PEGS: WITH PEGS MAT'L: 94V-2 [NATURAL] PACKAGING: PK-44472-001			PLATING: 1 (SEE NOTE 2) DRAINS: WITHOUT DRAIN HOLES PEGS: WITH PEGS MAT'L: 94V-O [NATURAL] PACKAGING: PK-44472-001			PLATING: 1 (SEE NOTE 2) DRAINS: WITH DRAIN HOLES PEGS: WITH PEGS MAT'L: 94V-2 [NATURAL] PACKAGING: PK-44472-001			PLATING: 1 (SEE NOTE 2) DRAINS: WITH DRAIN HOLES PEGS: WITH PEGS MAT'L: 94V-O [NATURAL] PACKAGING: PK-44472-001			
I	ITEM NO.		CKTS	ITEM NO.		CKTS	ITEM NO.		CKTS	ITEM NO.		CKTS	
	44472-0250		2	44472-0251		2	44472-0252		2	44472-0253		2	
	44472-0450		4	44472-0451		4	44472-0452		4	44472-0453		4	
	44472-0650		6	44472-0651		6	44472-0652		6	44472-0653		6	
	44472-0850		8	44472-0851		8	44472-0852		8	44472-0853		8	
	44472-1050		10	44472-1051		10	44472-1052		10	44472-1053		10	
	44472-1250		12	44472-1251		12	44472-1252		12	44472-1253		12	
	44472-1450		14	44472-1451		14	44472-1452		14	44472-1453		14	
	44472-1650		16	44472-1651		16	44472-1652		16	44472-1653		16	
	44472-1850		18	44472-1851		18	44472-1852		18	44472-1853		18	
	44472-2050		20	44472-2051		20	44472-2052		20	44472-2053		20	
	44472-2250		22	44472-2251		22	44472-2252		22	44472-2253		22	
	44472-2450		24	44472-2451		24	44472-2452		24	44472-2453		24	

G	PLATING: 1 (SEE NOTE 2) DRAINS: WITHOUT DRAIN HOLES PEGS: WITHOUT PEGS MAT'L: 94V-2 [NATURAL] PACKAGING: PK-44472-001			PLATING: 1 (SEE NOTE 2) DRAINS: WITHOUT DRAIN HOLES PEGS: WITHOUT PEGS MAT'L: 94V-O [NATURAL] PACKAGING: PK-44472-001		
F	ITEM NO.	HOUSING NO.	CKTS	ITEM NO.	HOUSING NO.	CKTS
	44472-0254		2	44472-0255		2
	44472-0454		4	44472-0455		4
	44472-0654		6	44472-0655		6
	44472-0854		8	44472-0855		8
	44472-1054		10	44472-1055		10
	44472-1254		12	44472-1255		12
	44472-1454		14	44472-1455		14
	44472-1654		16	44472-1655		16
	44472-1854		18	44472-1855		18
	44472-2054		20	44472-2055		20
	44472-2254		22	44472-2255		22
	44472-2454		24	44472-2455		24

• ITEMS PRECEDED BY AN *X* ARE NOT AVAILABLE.

PLATING NOTE EC NO: UCP2008-0163 DRW:LSCHMIDT 2007/09/26 CHK:ADDER 2007/09/26 APP:FSMITH 2007/09/26 REV DESCRIPTION	QUALITY SYMBOLS	GENERAL TOLERANCES (UNLESS SPECIFIED)	DIMENSION STYLE	SCALE	DESIGN UNITS	THIRD ANGLE PROJECTION
	▽=0	4 PLACES ±--- ±---	IN/MM	---	METRIC	
	▽=0	3 PLACES ±--- ±---				
		2 PLACES ±--- ±---				
		1 PLACE ±--- ±---				
		ANGULAR ±1/2°				
		DRAFT WHERE APPLICABLE MUST REMAIN WITHIN DIMENSIONS	DRAWN BY	DATE	TITLE	
			LEM	1999/02/22	MINI-FIT VERT HDR ASSY W & W/O PEGS/DRAIN HOLES SINGLE AND DUAL ROW	
			CHECKED BY	DATE		
			MAB	1999/02/22		
			APPROVED BY	DATE		
			RRE	1999/02/22		
			MATERIAL NO.	DOCUMENT NO.		
			SEE CHART	SDA-44472-****		
			SIZE C			SHEET NO. 3 OF 10
			THIS DRAWING CONTAINS INFORMATION THAT IS PROPRIETARY TO MOLEX INCORPORATED AND SHOULD NOT BE USED WITHOUT WRITTEN PERMISSION			