

PART NO.	ENG. NO.	MAT'L.	PLATE	WIRE GAGE	QUANTITY PER REEL	DIM. "B"	DIM. "C"	DIM. "D"	DIM. "E"	DIM. "F"	DIM. "G"
39-00-0207	5556-SP	A	A	18-24 GA.	4,000	.142±.012	.177±.016	.035	.075±.012	.091±.016	.020
39-00-0208	5556-SPL					(3.60±0.30)	(4.50±0.40)	(0.90)	(1.90±0.30)	(2.40±0.40)	(0.50)
39-00-0209	5556-S2P					.091±.012	.091±.016	.024	.071±.012	.065±.016	.016
39-00-0210	5556-S2PL			(2.30±0.30)	(2.30±0.40)	(0.60)	(1.80±0.30)	(1.65±0.40)	(0.40)		
39-00-0211	5556-S3P			.142±.012	.177±.016	.035	.091±.012	.106±.016	.024		
39-00-0212	5556-S3PL			(3.60±0.30)	(4.50±0.30)	(0.90)	(2.30±0.30)	(2.70±0.40)	(0.60)		
NOT TOOLED	5556-S5P	B	A	28-30 GA.	6,000	.091±.012	.091±.016	.024	.050±.010	.044±.010	.010
NOT TOOLED	5556-S5PL					(2.30±0.30)	(2.30±0.40)	(.60)	(1.27±0.25)	(1.12±0.25)	(0.25)
39-00-0213	5556-PBSP					.142±.012	.177±.016	.035	.075±.012	.091±.016	.020
39-00-0214	5556-PBSPL			(3.60±0.30)	(4.50±0.40)	(0.90)	(1.90±0.30)	(2.40±0.40)	(0.50)		
39-00-0215	5556-PBS2P			.091±.012	.091±.016	.024	.071±.012	.065±.016	.016		
39-00-0216	5556-PBS2PL			(2.30±0.30)	(2.30±0.40)	(0.60)	(1.80±0.30)	(1.65±0.40)	(0.40)		
39-00-0217	5556-PBS3P	.142±.012	.177±.016	.035	.091±.012	.106±.016	.024				
39-00-0218	5556-PBS3PL	(3.60±0.30)	(4.50±0.30)	(0.90)	(2.30±0.30)	(2.70±0.40)	(0.60)				
NOT TOOLED	5556-PBS5P			28-30 GA.	6,000	.091±.012	.091±.016	.024	.050±.010	.044±.010	.010
NOT TOOLED	5556-PBS5PL					(2.30±0.30)	(2.30±0.40)	(.60)	(1.27±0.25)	(1.12±0.25)	(0.25)

**LEGEND:**

5556 - \*\* S \* P \*

BASE NO. \_\_\_\_\_

MATERIAL \_\_\_\_\_

BLANK= BRASS

PB= PHOS. BRONZE

S= TIN OVER NICKEL

PLATING & CRIMP SIZE COMB. \_\_\_\_\_

BLANK THRU 5

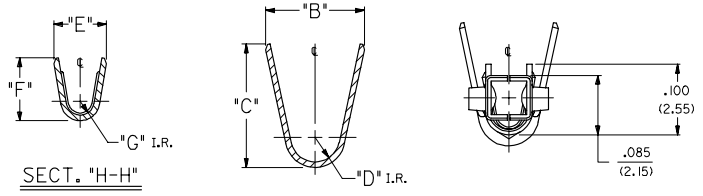
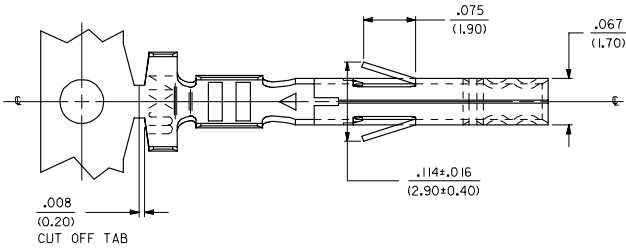
CHAIN OR LOOSE \_\_\_\_\_

BLANK= CHAIN

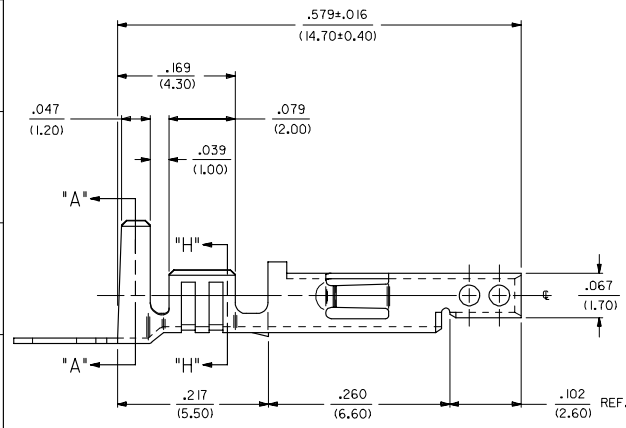
L= LOOSE

**NOTES:**

- PART DESIGNED IN METRIC.
- TERMINAL FOR USE WITH 5557, 42474, 43760 AND 30067 SERIES HOUSINGS.
- MATES WITH 5558, 5566 AND 5569 SERIES CONNECTORS.
- REFER TO DWG. NO. CS-5556\*/5558\* FOR CRIMP SPECIFICATIONS.
- MATERIAL:
  - A= BRASS, CDA 260
  - B= PHOS. BRONZE, CDA 510
- PLATING:
  - A= .000100/(.00254) MIN. BRIGHT TIN OVER .000050/(.00127) MIN. NICKEL.
- PRODUCT SPECIFICATION: PS-5556-001, PS-5556-002, PS-5556-003



**RoHS COMPLIANT**



REMOVED 14 GA. EC NO. UCP2005-2552 DRW:NDJ/DAE 2005/06/01 CHK:K6POLGAR 2005/06/01 APP:YMG/ILL 2005/06/01	QUALITY SYMBOLS	GENERAL TOLERANCES (UNLESS SPECIFIED)	DIMENSION STYLE IN/MM	SCALE 10:1	DESIGN UNITS INCH	THIRD ANGLE PROJECTION
	4 PLACES ±.--- ±.--- 3 PLACES ±.--- ±.010 2 PLACES ±0.25 ±.014 1 PLACE ±0.36 ±.--- ANGULAR ±1/2°	DRAWN BY GEP DATE 5/17/1990 CHECKED BY DATE 5/17/1990 APPROVED BY RAS DATE 5/17/1990	TITLE MINI FIT JR TERMINAL FEMALE, CRIMP, TIN/NICKLE	MATERIAL NO. SD-5556-SP*	DOCUMENT NO.	SHEET NO. 1 OF 1
DRAFT WHERE APPLICABLE MUST REMAIN WITHIN DIMENSIONS		SEE CHART		THIS DRAWING CONTAINS INFORMATION THAT IS PROPRIETARY TO MOLEX INCORPORATED AND SHOULD NOT BE USED WITHOUT WRITTEN PERMISSION		