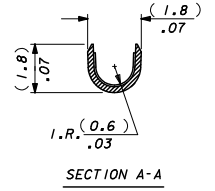
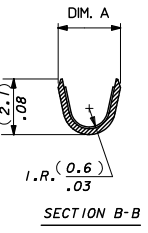
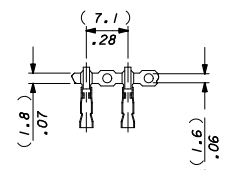
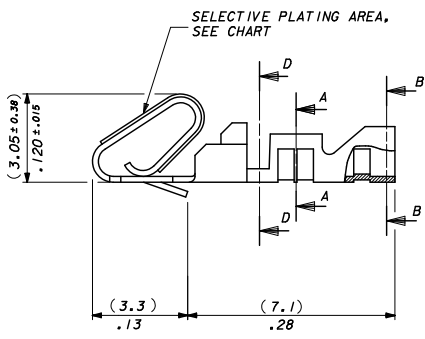
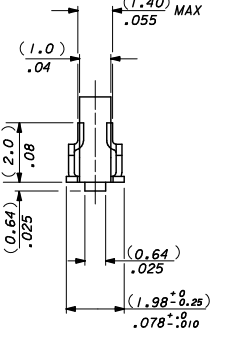
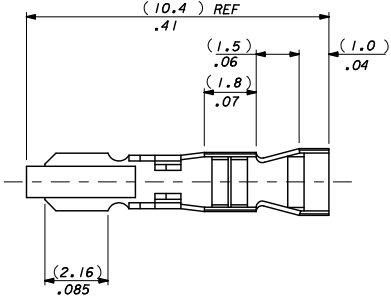
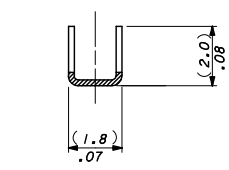


13 12 11 10 9 8 7 6 5 4 3 2 1

NOTES:

1. MATERIAL: (0.21)/.008 THICK BRASS.
2. FINISH: SEE SHEET 2.
3. THIS PART CONFORMS TO PRODUCT SPEC. 99020-0088.
4. TERMINAL MUST MEET BEND SPEC. SDES-219.
5. SUITABLE FOR 22-30 GA. WIRE, (1.57)/.062 MAX. INSULATION.
6. THIS PART CONFORMS TO CLASS B REQUIREMENTS OF COSMETIC SPECIFICATION PS-45499-002.



4809-(*)**
 PLATING CODE
 BLANK : DIM. A = (2.1) / 1.083 REF.
 M: DIM A = (2.2) / .087 REF.
 BLANK*CHAIN FORM TOP FEEDING REEL
 L*LOOSE FORM

| | | | | | | |
|---|-----------------|---------------------------------------|---|---|---------------------|------------------------|
| CORRECT PLATING EC NO. UCP2011-2131 DRAWN/STWART 2011/01/18 CHK/CHK PPER 2011/01/26 APPROV/SMITH 2011/02/04 | QUALITY SYMBOLS | GENERAL TOLERANCES (UNLESS SPECIFIED) | DIMENSION STYLE MM/IN | SCALE 10:1 | DESIGN UNITS METRIC | THIRD ANGLE PROJECTION |
| | ▽=0 | 4 PLACES ±--- ±--- | DRAWN BY MCC DATE 1986/07/30 | TITLE ANTI-FISH HOOKING TERMINAL KK.(2.50)/.100 | | |
| | ▽=0 | 3 PLACES ±--- ±.010 | CHECKED BY DMOR IARTY DATE 2004/10/18 | MATERIAL NO. SD-4809-* | | |
| | ▽=0 | 2 PLACES ±0.25 ±.014 | APPROVED BY JDENNEHY DATE 2004/10/19 | DOCUMENT NO. 1 OF 2 | | |
| AM | DESCRIPTION | ANGULAR ±---° | MATERIAL NO. SD-4809-* | | | |
| DRAFT WHERE APPLICABLE MUST REMAIN WITHIN DIMENSIONS | | SIZE C | THIS DRAWING CONTAINS INFORMATION THAT IS PROPRIETARY TO MOLEX INCORPORATED AND SHOULD NOT BE USED WITHOUT WRITTEN PERMISSION | | | |

12 11 10 9 8 7 6 5 4 3 2 1

13 12 11 10 9 8 7 6 5 4 3 2 1

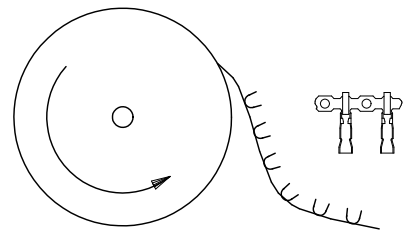
FINISH NOTES*

(550) GOLD PLATE (0.00038)/.000015 MIN. OVER (0.00076)/.000030 MIN. NICKEL

IN CONTACT AREA WITH (0.00005)/.000002 MIN. GOLD FLASH OVERALL.

(555) SELECTIVE GOLD (0.00038)/.000015 MIN. OVER (0.00076)/.000030 MIN. NICKEL IN CONTACT AREA ONLY.

(P918) HOT TIN DIP (0.00102-0.00305)/.000040-.000120



TERMINALS FEEDING FROM THE TOP OF THE REEL ARE STANDARD WOUND

| | | | | |
|------------------------|--------------|-------|--------|-------------------------------|
| 08-55-0110 | 4809-(555) | CHAIN | (555) | (2.45 - 1.75)/ .096 - .069 |
| 08-55-0111 | ↑-(555)L | LOOSE | | |
| 08-56-0120 | -(550) | CHAIN | (550) | (2.45 - 1.75)/ .096 - .069 |
| 08-56-0115 | -(550)L | LOOSE | | |
| 08-50-0135 | ↓-(P918) | CHAIN | (P918) | (2.45 - 1.75)/ .096 - .069 |
| 08-50-0136 | 4809-(P918)L | LOOSE | | |
| PART No | ENG No | FORM | FINISH | DIM . A |
| TOP FEEDING REELS ONLY | | | | |

| | | | | | | |
|---|--|---------------------------------------|-----------------|---|--------------------|--|
| CORRECT PLATING EC NO. UCP2011-2151 DRAWN BY: DMORLART 2011/01/18 CHECKED BY: CHKCHK PPR 2011/01/26 APPROVED BY: APPRESLTH 2011/02/04 | QUALITY SYMBOLS | GENERAL TOLERANCES (UNLESS SPECIFIED) | DIMENSION STYLE | SCALE | DESIGN UNITS | THIRD ANGLE PROJECTION |
| | ▽=0 | mm INCH | MM/IN | NTS | METRIC | |
| | ▽=0 | 4 PLACES ±--- ±--- | DRAWN BY DATE | MCC | | |
| | ▽=0 | 3 PLACES ±--- ±.010 | CHECKED BY DATE | DMORLART | | ANTI-FISH HOOKING TERMINAL KK(.2.50)/.100 |
| ▽=0 | 2 PLACES ±0.25 ±.014 | APPROVED BY DATE | JDENNEHY | | MOLEX INCORPORATED | |
| | ANGULAR ±---° | MATERIAL NO. | SEE CHART | | SD-4809-* | SHEET NO. 2 OF 2 |
| | DRAFT WHERE APPLICABLE MUST REMAIN WITHIN DIMENSIONS | SIZE | C | THIS DRAWING CONTAINS INFORMATION THAT IS PROPRIETARY TO MOLEX INCORPORATED AND SHOULD NOT BE USED WITHOUT WRITTEN PERMISSION | | |

12 11 10 9 8 7 6 5 4 3 2 1

lb_frame_C.P.ME.T
Rev. F 2009/06/18