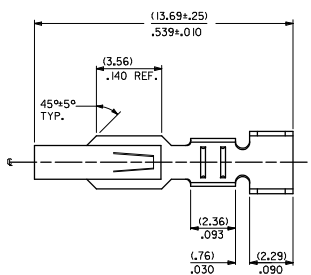
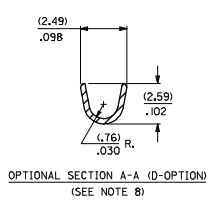
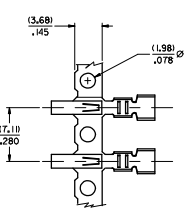


20 19 18 17 16 15 14 13 12 11 10 9 8 7 6 5 4 3 2 1



2478- * - * - *

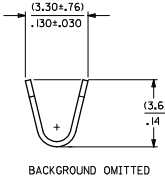
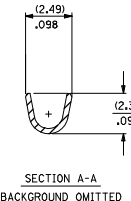
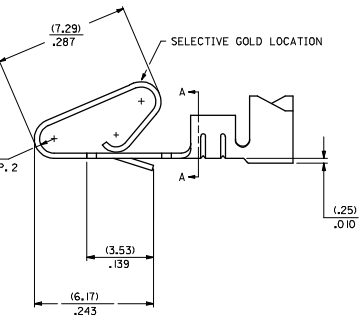
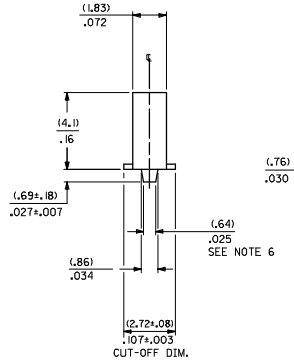
MATERIAL CODE
L=27/.0106 THK
I=BRASS
3=PHOS BRONZE

OPTION CODE
BLANK=AS SHOWN
C=CAT EAR OPTION
D=OPTIONAL CONDUCTOR CRIMP (FOR IRELAND)
(SEE OPT. SECTION A-A) WITHOUT CAT EARS
E=LOW INSERTION FORCE OPTION

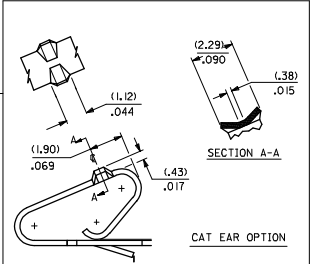
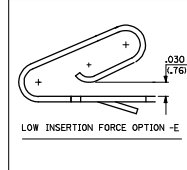
WINDING SPEC.
A=PER ES-339-A
BLANK=PER ES-339-B
L=LOOSE

FINISH: PER SDES-88
(P909) *OVERALL HOT TIN DIP: 2.54 MICROMETERS MIN.
(550) SELECT GOLD: 0.38 MICROMETERS MIN.
OVERALL GOLD FLASH: 0.05 MICROMETERS MIN.
OVERALL NICKEL UNDERPLATE: 0.76 MICROMETERS MIN.
(555) SELECT GOLD: 0.38 MICROMETERS MIN.
OVERALL NICKEL UNDERPLATE: 0.76 MICROMETERS MIN.

*THE PRIMARY SHIPPING CARTON WILL BE LABELED 'COMPLIANT TO RoHS DIRECTIVE 2002/95/EC AND ELV ANNEX II OF DIRECTIVE 2000/53/EC'. CARTONS WITHOUT THIS LABEL MAY CONTAIN PRODUCT WITH TIN/LEAD PLATING.



- NOTES:
- CRIMP ACCEPTS 18 TO 24 GA. WIRE WITH (2.79)/.110 MAX. INSUL. DIA. WHEN USED WITH 2574 CONNECTOR.
(2.54)/.100 MAX. INSUL. DIA. WHEN USED WITH 2139 CONNECTOR.
HOUSING 41695 IS RECOMMENDED FOR OVER (2.54)/.100 DIA. INSULATION.
CRIMP ACCEPTS (3.00)/.118 MAX. INSUL. DIA. WITH SPECIAL TOOLING.
 - DIMENSIONS GIVEN ACROSS CENTERLINES ARE SYMMETRICAL ABOUT THOSE CENTERLINES WITHIN HALF THE TOTAL TOLERANCE.
 -
 -
 -
 - (.86±.05)/.034±.002 IS AN OPTIONAL DESIGN.
 - THIS PART CONFORMS TO PRODUCT SPEC. 08-50.
 - CONDUCTOR CRIMP FOR 16 AWG. WIRE WITH .110 MAX. INSULATION DIA.



CHANGE TO MEMO EIC NO. 11E2005-4602 W CHOKSANEIC 2006/01/16 APPROVAL NO. 2006/01/16	QUALITY SYMBOLS	GENERAL TOLERANCES (UNLESS SPECIFIED)	DIMENSION STYLE	SCALE	DESIGN UNITS	THIRD ANGLE PROJECTION	
	$\nabla=0$ $\nabla=0$	4 PLACES ±--- INCH 3 PLACES ±--- ±.010 2 PLACES ±.025 ±.014 1 PLACE ±0.36 ±--- ANGULAR ±1/2°	IN/MM INCH	DRAWN BY DATE SAMIEC 06/03/86 CHECKED BY DATE PATEL 06/03/86 APPROVED BY DATE LENZ 06/03/86	INCH INCH	CRIMP TERMINAL .156 CENTERS 18 TO 24 GA WIRE	MOLEX INCORPORATED
	DRAFT WHERE APPLICABLE MUST REMAIN WITHIN DIMENSIONS	MATERIAL NO. SEE CHART SD-2478	DOCUMENT NO. SD-2478	SHEET NO. 1 OF 2			
	THIS DRAWING CONTAINS INFORMATION THAT IS PROPRIETARY TO MOLEX INCORPORATED AND SHOULD NOT BE USED WITHOUT WRITTEN PERMISSION						

h:\frame_d_p_ah.t Rev. D 2004/06/28 19 18 17 16 15 14 13 12 11 10 9 8 7 6 5 4 3 2 1

2478-1-(***)*		2478-3-(***)*		2478-IC-(***)*		2478-3C-(***)*		2478-ID-(***)*		2478-3E-(***)*	
PART NO.	ENG. NO.	PART NO.	ENG. NO.	PART NO.	ENG. NO.	PART NO.	ENG. NO.	PART NO.	ENG. NO.	PART NO.	ENG. NO.
08-50-0105	2478-1-(P909)	08-52-0071	2478-3-(P909)	08-50-0014	2478-IC-(P909)	08-52-0044	2478-3C-(P909)	08-50-0055	2478-ID-(P909)		
08-50-0106	2478-1-(P909)I	08-52-0072	2478-3-(P909)I	08-50-0045	2478-IC-(P909)I	08-52-0045	2478-3C-(P909)I	08-50-0056	2478-ID-(P909)I		
08-56-0105	2478-1-(550)	08-56-0114	2478-3-(555)	08-50-0047	2478-IC-(P102)	08-52-0023	2478-3C-(102)				
08-56-0106	2478-1-(550)I	08-56-0115	2478-3-(555)I	08-50-0046	2478-IC-(P102)I	08-52-0024	2478-3C-(102)I				
08-55-0103	2478-1-(555)	08-52-0073	2478-3-(P102)	08-50-0091	2478-IC-(102)	08-52-0027	2478-3C-(122)				
08-55-0104	2478-1-(555)I	08-52-0074	2478-3-(P102)I	08-50-0093	2478-IC-(102)I						
08-50-0146	2478-1-(109)	08-52-0811	2478-3-(102)			08-52-0047	2478-3C-(P102)I				
08-50-0147	2478-1-(109)I	08-52-0912	2478-3-(102)I			08-52-0046	2478-3C-(P102)				
08-50-0119	2478-1-(122)	08-50-0281	2478-3-(122)								
08-50-0120	2478-1-(122)I	2478-3-(122)I									
08-50-0271	2478-1-(P909)A	08-58-0121	2478-3-(550)								
	2478-1-(550)A	08-58-0122	2478-3-(550)I								
08-56-0153	2478-1-(507)	08-58-0103	2478-3-(59)I								
08-56-0154	2478-1-(507)I	08-58-0104	2478-3-(59)III								
	2478-1-(506)	08-58-0114	2478-3-(558)								
	2478-1-(506)I	08-58-0115	2478-3-(558)I								
08-50-0015	2478-1-(102)										
08-50-0016	2478-1-(102)I										
08-52-0114	2478-1-(P909)										
08-52-0115	2478-1-(P909)I										
	2478-1-(132)										
	2478-1-(132)I										
08-50-0001	2478-1-(P224)										
08-50-0006	2478-1-(P224)I										
08-50-0063	2478-1-(224)										
08-50-0064	2478-1-(224)I										
08-55-0133	2478-1-(56)I										
08-55-0134	2478-1-(56)III										
08-50-0073	2478-1-(P102)										
08-50-0074	2478-1-(P102)I										

SEE SHEET I	SEE SHEET I	SEE SHEET I	SEE SHEET I
SEE SHEET I	SEE SHEET I	SEE SHEET I	SEE SHEET I
SEE SHEET I	SEE SHEET I	SEE SHEET I	SEE SHEET I
SEE SHEET I	SEE SHEET I	SEE SHEET I	SEE SHEET I
SEE SHEET I	SEE SHEET I	SEE SHEET I	SEE SHEET I
SEE SHEET I	SEE SHEET I	SEE SHEET I	SEE SHEET I
SEE SHEET I	SEE SHEET I	SEE SHEET I	SEE SHEET I
SEE SHEET I	SEE SHEET I	SEE SHEET I	SEE SHEET I
LTR. REVISIONS	LTR. REVISIONS	LTR. REVISIONS	LTR. REVISIONS

CRIMP TERMINAL
 #56 6
 8/24 AWG WIRE
 MOLEX INCORPORATED
 06/12/86
 SD-2478
 SEE CHARTS