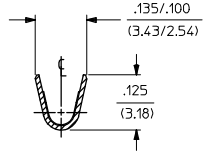
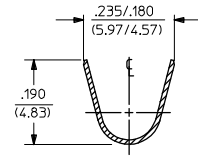
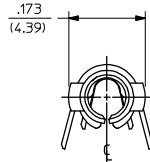
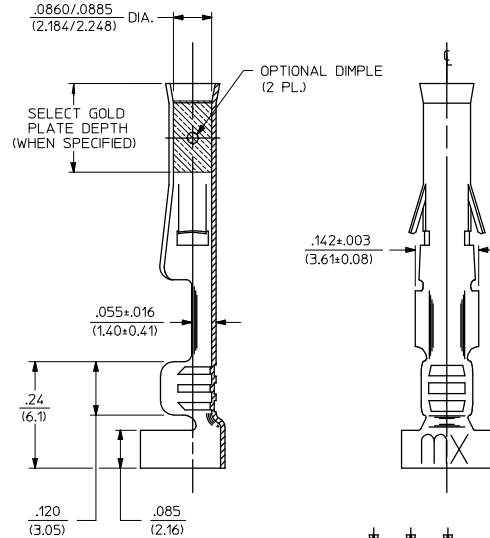
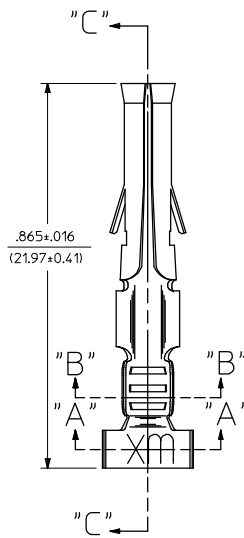


PART NO.	ENG. NO.
02-09-1205	4550-IP901
02-09-1206	4550-IP901L
02-09-5169	4550-A(P558)
02-09-5170	4550-A(P558)L

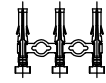


SECTION "A-A"

SECTION "B-B"



SECTION "C-C"



CHAIN FORM FULL SCALE

LEGEND

- 4550-*(*)***)*
 OPTIONAL DIMPLE
 BLANK=WITH DIMPLE
 A= WITHOUT DIMPLE
 P=PREPLATE
 BLANK=POSTPLATE
 FORM
 BLANK=CHAIN
 L=LOOSE
 FINISH CODE

NOTES:

1. MATERIAL: PHOSPHOR BRONZE
2. FINISHES:
 901 - HOT TIN DIP .000020/(0.00051) MIN.
 558 - SELECT GOLD PLATE .000030/(0.00076) MIN. IN CONTACT AREA. OVER .000050/(0.00127) MIN. NICKEL OVERALL WITH .000010/(0.000251) MAX. GOLD FLASH.
3. THIS PART CONFORMS TO PROD. SPEC. 02-09.
4. TERMINAL FOR USE WITH .093/(2.36) SERIES HOUSINGS AND WILL ACCEPT 14 THRU 20 AWG WIRE.
5. INSERTION FORCE: 3.5 LBS. MAX. WHEN TERMINAL IS INSERTED INTO AN .093 SERIES HOUSING.
6. RETENTION: 20 LBS. MIN. FROM HOUSING.

CORRECT DIMENSION EC NO. UCP2009-0419 DRAWING REVISIONS 2008/08/18 CHKD: AELHAG APPR: ESMITH 2008/08/20	QUALITY SYMBOLS ▽=0 ▽=0	GENERAL TOLERANCES (UNLESS SPECIFIED)		DIMENSION STYLE IN/MM		SCALE 6:1	DESIGN UNITS INCH	THIRD ANGLE PROJECTION	
		4 PLACES ±.005 ±.005	3 PLACES ±.010 ±.010	DRAWN BY GWC	DATE 1991/05/02	TITLE CRIMP TERMINAL, FEMALE			
		2 PLACES ±0.25 ±.014	1 PLACE ±0.35 ±.014	CHECKED BY RW	DATE 1991/05/02	MATERIAL NO. SD-4550-*			
		ANGULAR ±1/2°		APPROVED BY GWF	DATE 1991/05/02	DOCUMENT NO. SD-4550-*			
DRAFT WHERE APPLICABLE MUST REMAIN WITHIN DIMENSIONS		SEE CHART		THIS DRAWING CONTAINS INFORMATION THAT IS PROPRIETARY TO MOLEX INCORPORATED AND SHOULD NOT BE USED WITHOUT WRITTEN PERMISSION				SHEET NO. 1 OF 1	