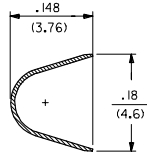
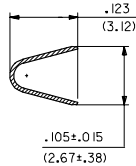


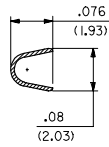
13 12 11 10 9 8 7 6 5 4 3 2 1



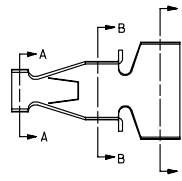
SECTION C-C



SECTION B-B

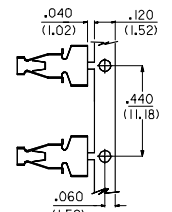


SECTION A-A



NOTES:

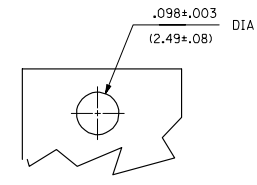
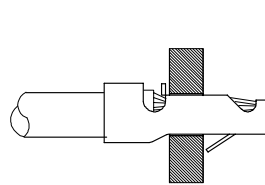
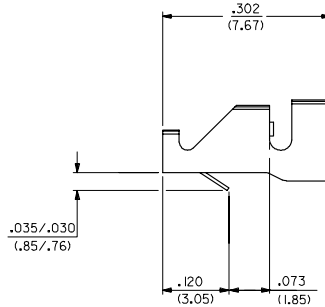
1. MATERIAL: 260 BRASS .008 THK
2. TERMINAL 4706-(***)* ACCEPTS 16 TO 18 AWG WIRE WITH INSULATION DIA OF .120 MAX
3. TERMINALS CONFORM TO SOLDERABILITY SPEC I52
4. PRODUCT SPECIFICATION: PS-4706-001



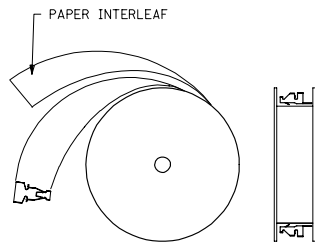
CARRIER DETAIL

4706-*(****)*
 BLANK=SEE SHT 1
 3=SEE SHEET 2
 FORM
 BLANK=CHAIN
 L=LOOSE
 PLATING PER SDES-88
 *(P909) OVERALL HOT TIN DIP: 2.54 MICROMETERS MIN

*THE PRIMARY SHIPPING CARTON WILL BE LABELED "COMPLIANT TO RoHS DIRECTIVE 2002/95/EC AND ELV ANNEX II OF DIRECTIVE 2000/53/EC." CARTONS WITHOUT THIS LABEL MAY CONTAIN PRODUCT WITH TIN-LEAD PLATING.



RECOMMENDED PC BOARD



WINDING SPEC

4706-(***)*

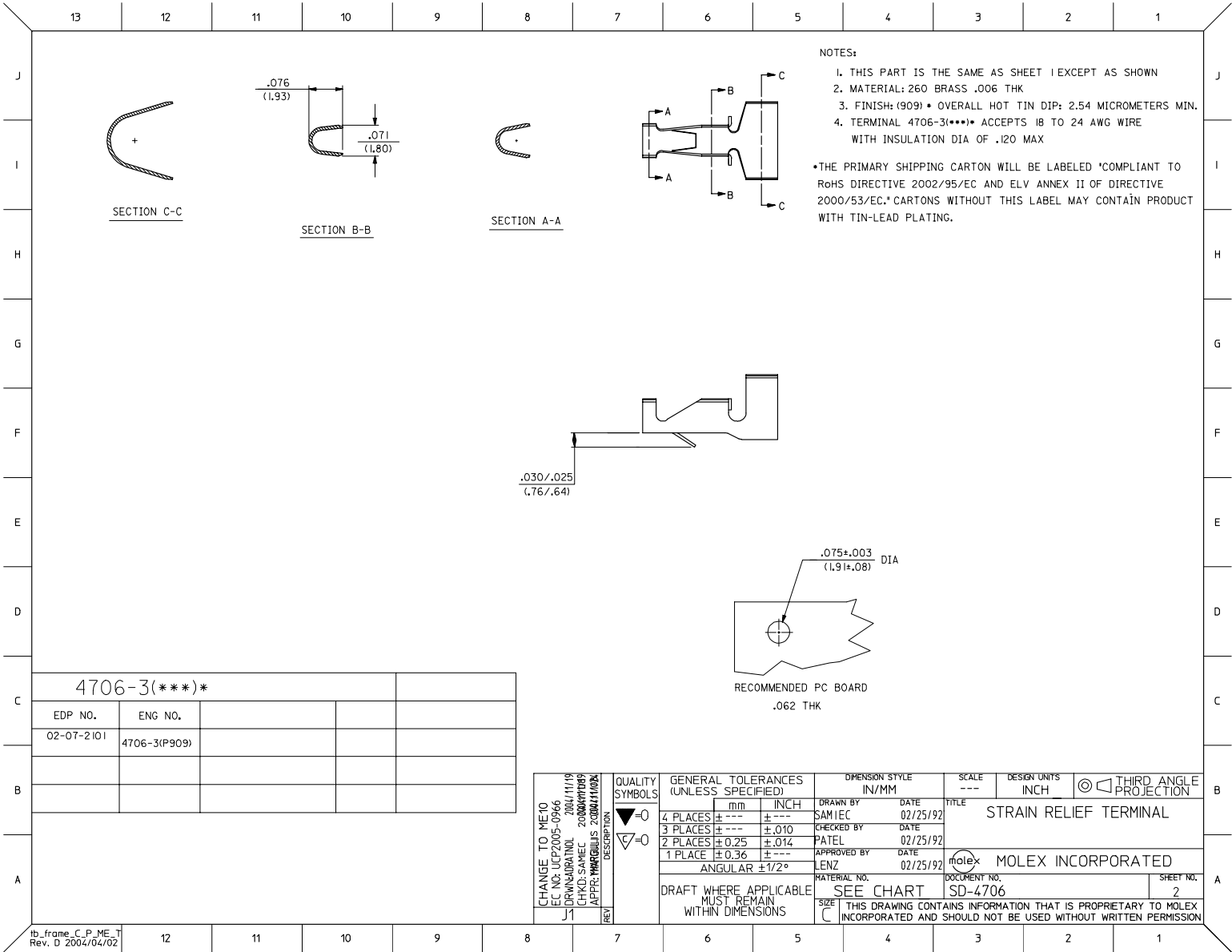
EDP NO.	ENG NO.		
02-09-2105	4706-(P909)		
-	- ()		
-	- ()		

CHANGE TO ME10 EC NO: UCP2005-0966 DRAWN/IN/DEL: 788/11/19 CHKD: SAMIEC 2006/07/29 APPR: WANGJULIS 2006/07/29	QUALITY SYMBOLS	GENERAL TOLERANCES (UNLESS SPECIFIED)	DIMENSION STYLE	.062 STAKE	DESIGN UNITS	THIRD ANGLE PROJECTION
	▽=0	4 PLACES ± --- ± ---	IN/MM	---	INCH	
	▽=0	3 PLACES ± --- ± .010				
		2 PLACES ± 0.25 ± .014				
	1 PLACE ± 0.36 ± ---	ANGULAR ±1/2°				
		DRAFT WHERE APPLICABLE MUST REMAIN WITHIN DIMENSIONS	MATERIAL NO.	DOCUMENT NO.		SHEET NO.
			SEE CHART	SD-4706		1 OF 2
			THIS DRAWING CONTAINS INFORMATION THAT IS PROPRIETARY TO MOLEX INCORPORATED AND SHOULD NOT BE USED WITHOUT WRITTEN PERMISSION			

STRAIN RELIEF TERMINAL

MOLEX INCORPORATED

12 11 10 9 8 7 6 5 4 3 2 1



4706-3(***)*			
EDP NO.	ENG NO.		
02-07-2101	4706-3(P909)		

CHANGE TO ME10 EC NO: UCP2005-0966 DRAWN BY: J1 CHKD: SAMIEC 2006/07/09 APPR: PHARGOLIS 2006/11/02	QUALITY SYMBOLS	GENERAL TOLERANCES (UNLESS SPECIFIED)	DIMENSION STYLE IN/MM	SCALE ---	DESIGN UNITS INCH	THIRD ANGLE PROJECTION
	▽=0	4 PLACES ± --- ± ---	DRAWN BY: SAMIEC	DATE: 02/25/92	TITLE: STRAIN RELIEF TERMINAL	
	▽=0	3 PLACES ± --- ± .010	CHECKED BY: PATEL	DATE: 02/25/92	MATERIAL NO. SD-4706	
		2 PLACES ± 0.25 ± .014	APPROVED BY: LENZ	DATE: 02/25/92	DOCUMENT NO. SD-4706	SHEET NO. 2
	1 PLACE ± 0.36 ± ---	ANGULAR ±1/2°	DRAFT WHERE APPLICABLE MUST REMAIN WITHIN DIMENSIONS			
			MATERIAL NO. SEE CHART			
			SIZE C			
			THIS DRAWING CONTAINS INFORMATION THAT IS PROPRIETARY TO MOLEX INCORPORATED AND SHOULD NOT BE USED WITHOUT WRITTEN PERMISSION			

tb_frame_C_P_ME_T
Rev. D 2004/04/02