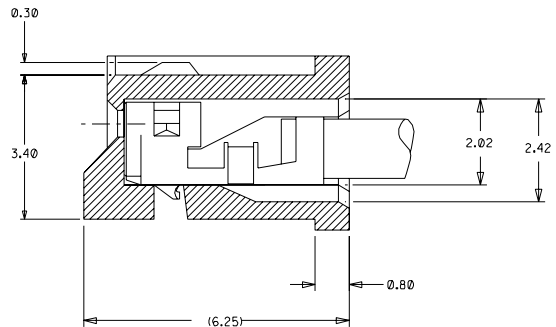
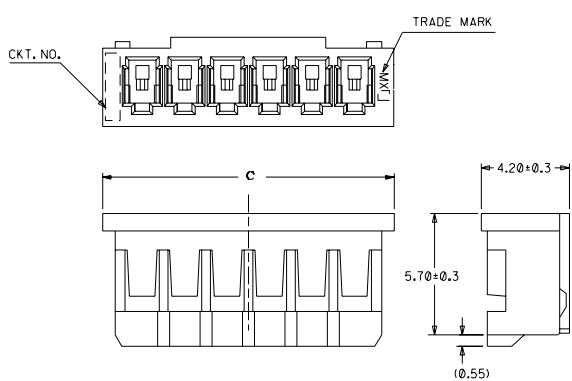
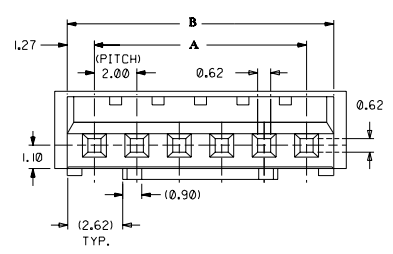


DWG. NO. SD 87369-\*\*-00  
 CAD FILE S87369.DGN

8 7 6 5 4 3 2 1



**TERMINAL ASSEMBLY DRAWING**  
(10:1)



**PART NO. LEGEND**

87369 - \*\* 0 .  
 CKT SIZE      COLOR OPTION  
 0 - NATURAL  
 1 - BLACK  
 2 - RED  
 3 - YELLOW  
 4 - BLUE  
 5 - GREEN

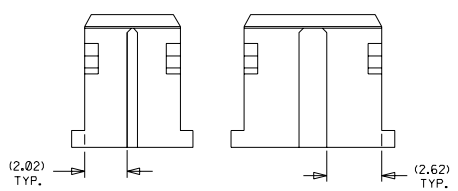
**NOTES**

1. APPLICABLE TERMINAL :50212-8\*00
2. MATERIAL : NYLON 66, UL94V-0 NATURAL
3. MATES WITH 89400-\*\*-10/\*\*20 & 89401-\*\*-10

33.74	32.54	30	87369-160*	16
31.74	30.54	28	87369-150*	15
29.74	28.54	26	87369-140*	14
27.74	26.54	24	87369-130*	13
25.74	24.54	22	87369-120*	12
23.74	22.54	20	87369-110*	11
21.74	20.54	18	87369-100*	10
19.74	18.54	16	87369-090*	9
17.74	16.54	14	87369-080*	8
15.74	14.54	12	87369-070*	7
13.74	12.54	10	87369-060*	6
11.74	10.54	8	87369-050*	5
9.74	8.54	6	87369-040*	4
7.74	6.54	4	87369-030*	3
5.74	4.54	2	87369-020*	2

**IN CASE OF  
2 CIRCUIT HSG.**

**IN CASE OF  
3 CIRCUIT HSG.**



**UNITS : MM**

MATERIAL : SEE NOTES		MOLEX SINGAPORE PTE LTD SHEET 1 OF 1																	
FINISH : ---		GENERAL TOLERANCES : ± 0.20/0.08 REV B5																	
DRAWN BY CLEE 920305 CHK'D BY JOEY 920326		TITLE : 2.0 MM PITCH WIRE TO BOARD CONN. RECEPTACLE																	
APPR'D BY ROY 920326 SCALE 5:1																			
<table border="1"> <tr> <td>B5</td> <td>REVISE PART NO. LEGEND &amp; NOTE 3 PER ECN 1999-0061</td> <td>SAX</td> <td>980814</td> </tr> <tr> <td>B4</td> <td>REL 87369-**-05 (GREEN) AS PER PDR# 98-06-0330 (AS PER ECN# S1998-0617)</td> <td>SEE TOH</td> <td>980623</td> </tr> <tr> <td>B3</td> <td>ADD COLOR OPTION REPLACE SD-87369-**-0*</td> <td>S60565 SAX GMR</td> <td>960618</td> </tr> <tr> <td>LTR</td> <td>REVISION RECORD</td> <td>ECN DR</td> <td>CHK DATE</td> </tr> </table>				B5	REVISE PART NO. LEGEND & NOTE 3 PER ECN 1999-0061	SAX	980814	B4	REL 87369-**-05 (GREEN) AS PER PDR# 98-06-0330 (AS PER ECN# S1998-0617)	SEE TOH	980623	B3	ADD COLOR OPTION REPLACE SD-87369-**-0*	S60565 SAX GMR	960618	LTR	REVISION RECORD	ECN DR	CHK DATE
B5	REVISE PART NO. LEGEND & NOTE 3 PER ECN 1999-0061	SAX	980814																
B4	REL 87369-**-05 (GREEN) AS PER PDR# 98-06-0330 (AS PER ECN# S1998-0617)	SEE TOH	980623																
B3	ADD COLOR OPTION REPLACE SD-87369-**-0*	S60565 SAX GMR	960618																
LTR	REVISION RECORD	ECN DR	CHK DATE																
<p><b>REVISE ONLY ON CAD SYSTEM</b></p>																			

THIS DRAWING CONTAINS INFORMATION THAT IS PROPRIETARY TO MOLEX (S) PTE LTD AND SHOULD NOT BE USED WITHOUT WRITTEN PERMISSION

DO NOT SCALE DRAWING