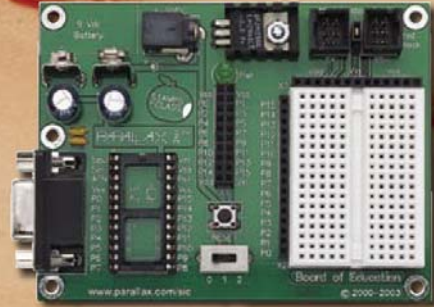
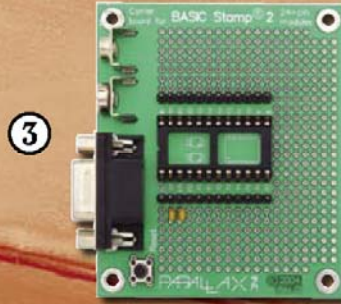




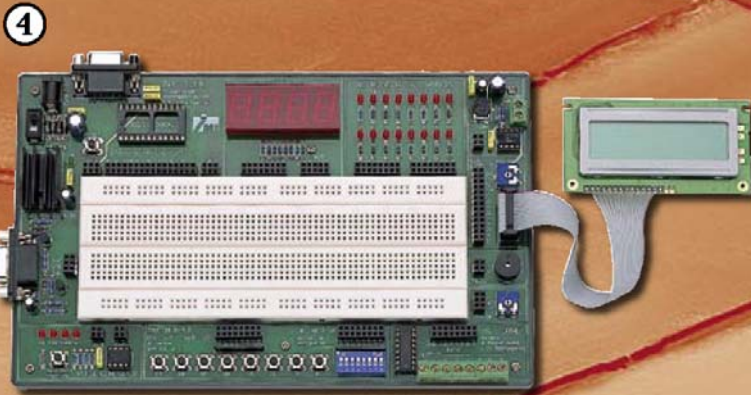
1



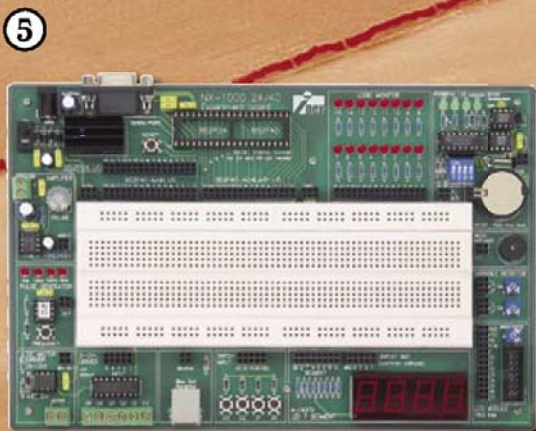
2



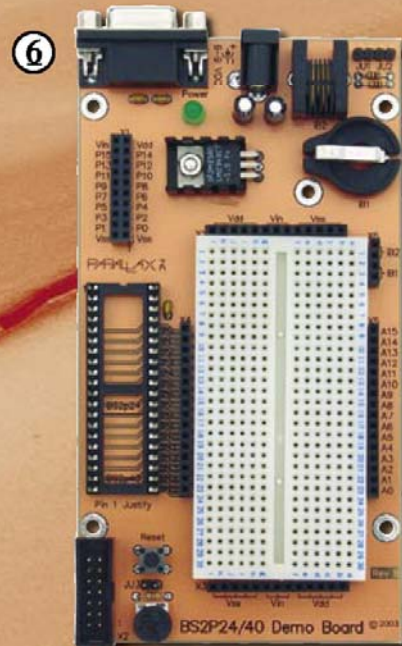
3



4



5



6

06

# Development Boards

**1. BASIC Stamp Super Carrier Board; #27130** - Ready for some soldering? The Super Carrier Board provides Parallax customers with a solder pad prototyping space and holes placed to accommodate DIP ICs. The Super Carrier is unique because it is one of the few boards that provides support for both the BS1-IC and the complete series of 24-pin BASIC Stamp modules (including the Javelin Stamp).

**2. Board of Education® (BOE); #28150** - The BOE was designed in coordination with our educational customers to help make microcontroller programming and interfacing easy. The BOE is available as a separate programming board or you may purchase the BS2/BOE Starter Kit (#27203) or the BASIC Stamp Discovery Kit (#27207).

**3. BASIC Stamp 2 Carrier Board; #27120** - Our lowest cost programming board is suitable for small projects. The BS2 Carrier Board has a 24-pin DIP socket that will accommodate all 24-pin BASIC Stamp modules. The board also contains through-hole prototype area, battery clip, and reset button. 9V battery is required (not included).

**4. NX-1000 Development Board with LCD; #28135** - The original NX-1000 Board is well-documented by the StampWorks manual which is included in the StampWorks Experiment Kit (#27297). The NX-1000 is a high-quality prototype and experiment area for all 24-pin BASIC Stamp modules. The board features improvements to durability and construction (double-sided plating, improved switch), an audio amplifier for external speakers and current limit resistors sized for driving more LEDs! The board provides socket ports for each BASIC Stamp I/O pin. The package also includes printed documentation, schematics, and source code examples for the BS2-IC. A parallel LCD with cable is also included.

**5. NX-1000 24/40 Development Board with iButton®; #28137** - The NX-1000 Board's popularity has spawned a new breed titled the "NX-1000 24/40." The 24/40 designation is appropriate since any 24-pin BASIC Stamp module, or 40-pin BASIC Stamp module, or Javelin Stamp module may be plugged into the socket. Recommended as a development and prototyping platform for customers with a strong programming and electronics background. Due to the I<sup>2</sup>C components and a connection for a 1-Wire interface, the 24/40 is the ideal choice for BASIC Stamp 2p series and the BASIC Stamp 2p40 module. In addition to the board, you will receive the following: 12V/1 Amp power supply, documentation, 2x16 Parallel LCD, and a DS1990A-F3 iButton® sample in a plastic fob.

**6. BASIC Stamp 2p24/40 Demo Board; #45187** - The Demo Board provides very useful connections to Dallas Semiconductor 1-Wire, Philips I<sup>2</sup>C communications components, standard parallel LCDs (with Hitachi HD44780 or compatible chipset) as well as a breadboard prototype space. Will work with all 24-pin BASIC Stamp modules (and the Javelin Stamp module), but is specially tailored to maximize the capabilities of the 24- and 40-pin BASIC Stamp 2p modules.

# www.parallax.com