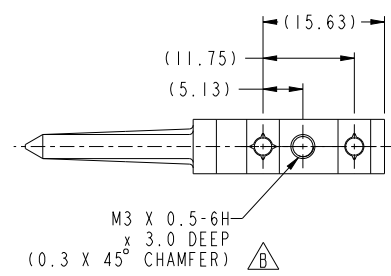
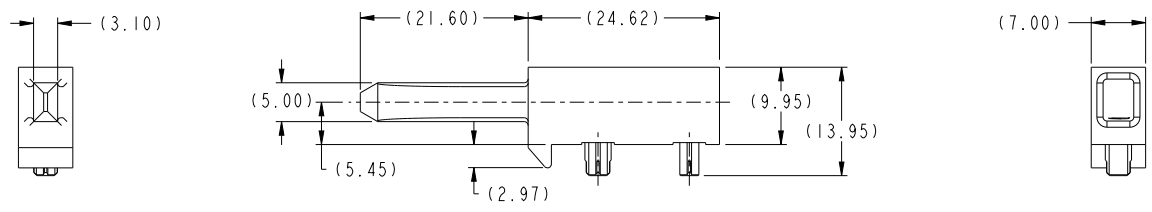


PRODUCT NUMBER
SEE TABLE, SHEET 2



Copyright FCI

spec ref		dr	Chen-Hong Tan	2009/08/16	projection	MM	size	A3	scale	2:1			
tolerance std	ASME Y14.5	eng	Yang-Kai Lin	2011/10/04			ecm no	ELK-S-000144-1					
TOLERANCES UNLESS OTHERWISE SPECIFIED		chr	-	appr			Chen-Hong Tan	2011/10/07	product family	AirMax Accessories	rel level	Released	
surface	3.2	linear	0.X	±0.3		7.2mm R/A GUIDE BLADE 2/3 PAIR	drawing no 10045588	rev B	ASME Y14.5				
		linear	0.XX	±0.10					www.fci.com		Product - Customer Drw		sheet 1 of 2
		angular	0°	±2°					cat. no.		STATUS:Released		Printed: Oct 07, 2011

Prod File - Rev C - 2009-01-09

PDS: Rev :B

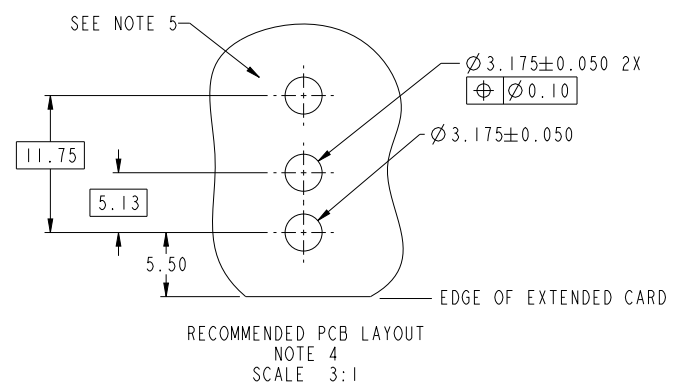
STATUS:Released

Printed: Oct 07, 2011

Product number
10045588-101LF

NOTES:

- ① MATERIAL: ZINC ALLOY.
- ② FINISH: ZINC YELLOW CHROMATE.
3. APPLICATION SPECIFICATION: GS-20-045.
- ④ REFER TO CUSTOMER DRAWING 10035911 FOR INFORMATION REGARDING PCB LAYOUT OF POWER AND GUIDE MODULES RELATIVE TO SIGNAL MODULES.
- ⑤ RIGHT ANGLE PIN MODULE HAS THE SAME PCB FOOTPRINT AS RIGHT ANGLE RECEPTACLE MODULE (REF P/N 10045367 SHEET 2).
6. THIS PRODUCT MEETS EUROPEAN DIRECTIVES AND OTHER COUNTRY REGULATIONS AS DESCRIBED IN GS-22-008
7. PACKAGING MEETS GS-14-920 LEAD FREE LABELING SPECIFICATION.
8. A \triangle SYMBOL WILL BE NEXT TO ANY DIMENSION, VIEW, OR NOTE WHICH HAS BEEN MODIFIED WITH THE CURRENT DRAWING REVISION.



Copyright FCI.

spec ref			dr	Chen-Hong Tan	2009/08/16	projection	MM	size	A3	scale	1:1
tolerance std	TOLERANCES UNLESS OTHERWISE SPECIFIED		eng	Yang-Kai Lin	2011/10/04			ecm no	ELK-S-000144-1		
ASME Y14.5			chr	-	-			rel level	Released		
surface	3.2		appr	Chen-Hong Tan	2011/10/07	product family	AirMax Accessories		rel level	Released	
ASME Y14.5	linear	0.X ±0.3 0.XX ±0.10 0.XXX ±0.050			title	7.2mm R/A GUIDE BLADE		dwg no	10045588		
	angular	0° ±2°	www.fci.com		cat. no.	Product - Customer Drw		rev	B		

Prod File - Rev C - 2009-08-09

PDS: Rev :B STATUS:Released Printed: Oct 07, 2011