



Copyright FCI



FCIconnect.com



1 | 2

3 |

4

PRODUCT NUMBER
20020006-XXXXXXLF

20020006 — □ □ □ □ □ 0 □ L F

PITCH
G: 5.00 mm
H: 5.08 mm

POLES
02: 2 POLES
03: 3 POLES
04: 4 POLES
1
24: 24 POLES

LF : DENOTED RoHS COMPATIBLE

1 : STANDARD PRODUCT
W/ BOX PACKING

PROPERTY TABLE				
FCI SERIES NAME		01-500	01-508	
PITCH (mm)		5.00	5.08	
VOLTAGE RATING (VAC)		300	300	
CURRENT RATING (A)		12	12	
APPLICABLE WIRE RANGE (AWG)		1-WIRE 12~24 2-WIRE 18	12~24 18	
WIRE CROSS SECTION (mm ²)	SOLID	1-WIRE	2.5	2.5
		2-WIRE	1.0	1.0
	STRANDED	1-WIRE	2.5	2.5
		2-WIRE	1.5	1.5
OPENING CONTACT HOUSING(mm ²)		2.6x3.2	2.6x3.2	
WIRE STRIP LENGTH(mm)		7~8	7~8	
TORQUE +/-10% (N-m/Lb-in)		0.57/5.0	0.57/5.0	
SCREW		M3x0.5	M3x0.5	
WITHSTANDING VOLTAGE (kV)		1.6	1.6	
OPERATING TEMP. (°C)		-40~+115	-40~+115	
POLES AVAILABLE		02~24	02~24	
SAFETY CERTIFICATE				

HOUSING CODE

CODE	COLOR	AVAILABILITY
1	GREEN(RAL 6018/T)	STANDARD
2	BLACK	ON REQUEST ONLY
3	GREY(RAL 7004/P)	ON REQUEST ONLY
4	BLUE(RAL 5015/A)	ON REQUEST ONLY

SCREW CODE

CODE	SCREW TYPE	AVAILABILITY
A	-/+	ON REQUEST ONLY
B	-	STANDARD

NOTES:

- MATERIALS
 1-1 HOUSING: THERMALPLASTIC RESIN, UL 94V-0 RATED.
 1-2 SCREW: STEEL, ZINC PLATED.
 1-3 CLAMP: COPPER ALLOY, NICKEL PLATED.
 1-4 TERMINAL: COPPER ALLOY, TIN PLATED.
 2. PRODUCTION SPECIFICATION REFER TO FCI GS-12-625.
 3. BOXED PACKAGING.
 DETAILED PRODUCT PACKING SPECIFICATION REFER TO FCI GS-14-1394.
 4. FCI, SAFETY CERTIFICATE LOGO AND SERIES NAME TO BE SHOWN ON PRODUCT SURFACE.
 5. THE PRODUCTS WHERE THE PART NUMBER END IN "LF" MEET THE EUROPEAN UNION DIRECTIVE AND OTHER COUNTRY REGULATIONS AS DESCRIBED IN GS-22-008.

mat'l. code		surface ASME Y14.5	tolerance ASME Y14.5	projection	product family
itr		tolerances unless otherwise specified			TERMINAL BLOCK
D	T10-0042	WL	030310	angles	title
E	T10-0127	WL	080910	$X \pm 0.5 [.020]$	TERMINAL BLOCK
F	T10-0159	WL	100410	$X \pm 1$	PLUGGABLE PLUG, CONTACT UP SIDE
G	T10-0187	WL	121410	dr	dwg no
H	T-004746	WL	072011	enr	sheet 1 of 3 size
				chr	20020006
				appd	A4
				JOSEPH HSIA	type
					CUSTOMER Drawing
sheet index	revision sheet	H	H	H	
		1	2	3	

form: A4mmXLc

1 |

2 |

PDS: Rev :H3 |

STATUS:Released

Printed: Aug 02 2011



Copyright FCI



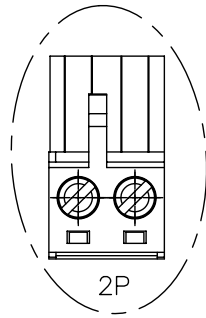
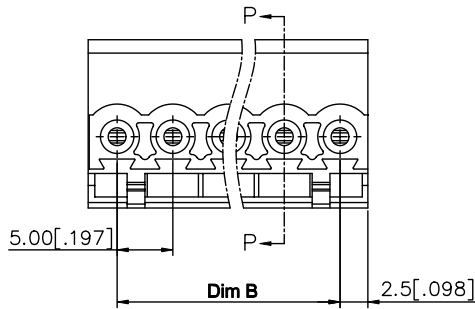
FCIconnect.com

1 | 2

3 |

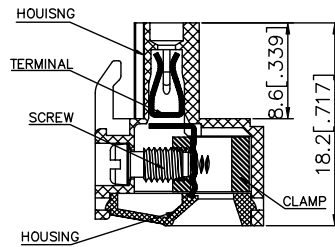
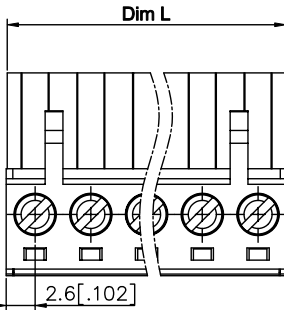
4

PRODUCT NUMBER	SERIES NAME	PITCH
20020006-GXXXXXL	01-500	5.00 mm

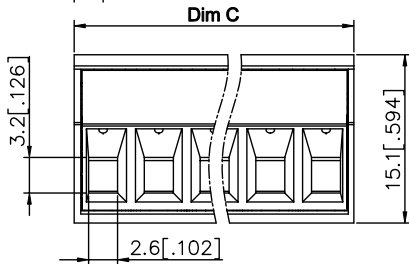


N= NUMBER OF POLES
DIMENSION

Dim L	$N \times 5.0 [.197]$
Dim B	$(N-1) \times 5.0 [.197]$
Dim C	$N \times 5.0 [.197] + 0.10 [.004]$



Poles	Tolerance
2P-5P	$\pm 0.15 [.006]$
6P-10P	$\pm 0.20 [.008]$
11P-15P	$\pm 0.25 [.010]$
16P-20P	$\pm 0.30 [.012]$
21P-24P	$\pm 0.40 [.016]$



SECTION P-P

mat'l. code	surface ASME Y14.5 ✓	tolerance ASME Y14.5	projection	product family	TERMINAL BLOCK
ltr ecn no dr date	tolerances unless otherwise specified			title	TERMINAL BLOCK PLUGGABLE PLUG, CONTACT UP SIDE
H	angles	$X \pm 0.5 [.020]$ $X.X \pm 0.3 [.012]$ $X.XX \pm 0.1 [.004]$	MM [INCH]	dwg no	20020006
	dr	BEER FU 062509	scale	sheet 2 of 3	size A4
	enr	BEER FU 062509		CUSTOMER Drawing	
	chr	GARY HSIEH 062509			
	appd	JOSEPH HSIA 062509			
sheet index	revision sheet				

form: A4mmXLc

1 |

2 |

PDS: Rev :H 3 |

STATUS:Released

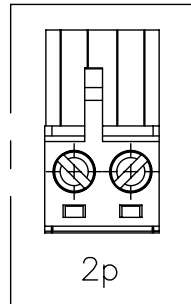
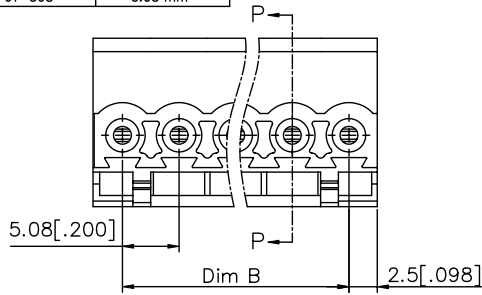
Printed: Aug 02 2011

Copyright FCI



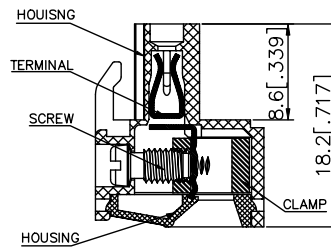
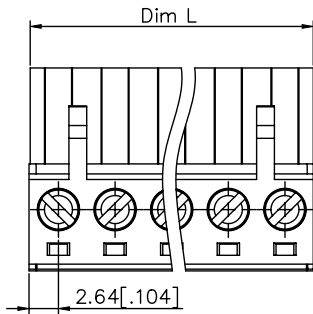
FCIconnect.com

PRODUCT NUMBER	SERIES NAME	PITCH
20020006-HXXXXXXLF	01-508	5.08 mm



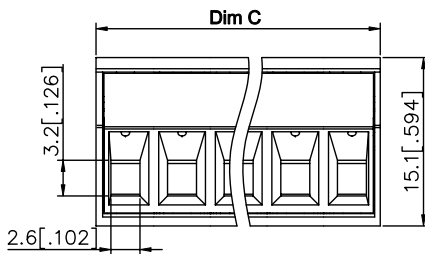
N= NUMBER OF POLES
DIMENSION

Dim L	Nx5.08 [.200]
Bim B	(N-1)x5.08 [.200]
Dim C	Nx5.08 [.200]+0.10 [.004]



SECTION P-P

Poles	Tolerance
2P-5P	±0.15 [.006]
6P-10P	±0.20 [.008]
11P-15P	±0.25 [.010]
16P-20P	±0.30 [.012]
21P-24P	±0.40 [.016]



mat'l. code	surface ASME Y14.5	tolerance ASME Y14.5	projection	product family	
ltr	ecn	no	dr	date	
tolerances unless otherwise specified				title	
H	angles	MM	INCH	TERMINAL BLOCK	
	X±1	X.X±0.5 [.020]	X.X±0.3 [.012]	PLUGGABLE PLUG, CONTACT UP SIDE	
		X.XX±0.1 [.004]	scale	dwg no	
dr	BEER FU	062509	FCI	sheet 3 of 3	
enr	BEER FU	062509		20020006	A4
chr	GARY HSIEH	062509		size	
appd	JOSEPH HSIA	062509		type	CUSTOMER Drawing
sheet index	revision sheet				

form: A4mmXLc

PDS: Rev :H 3

STATUS:Released

Printed: Aug 02 2011