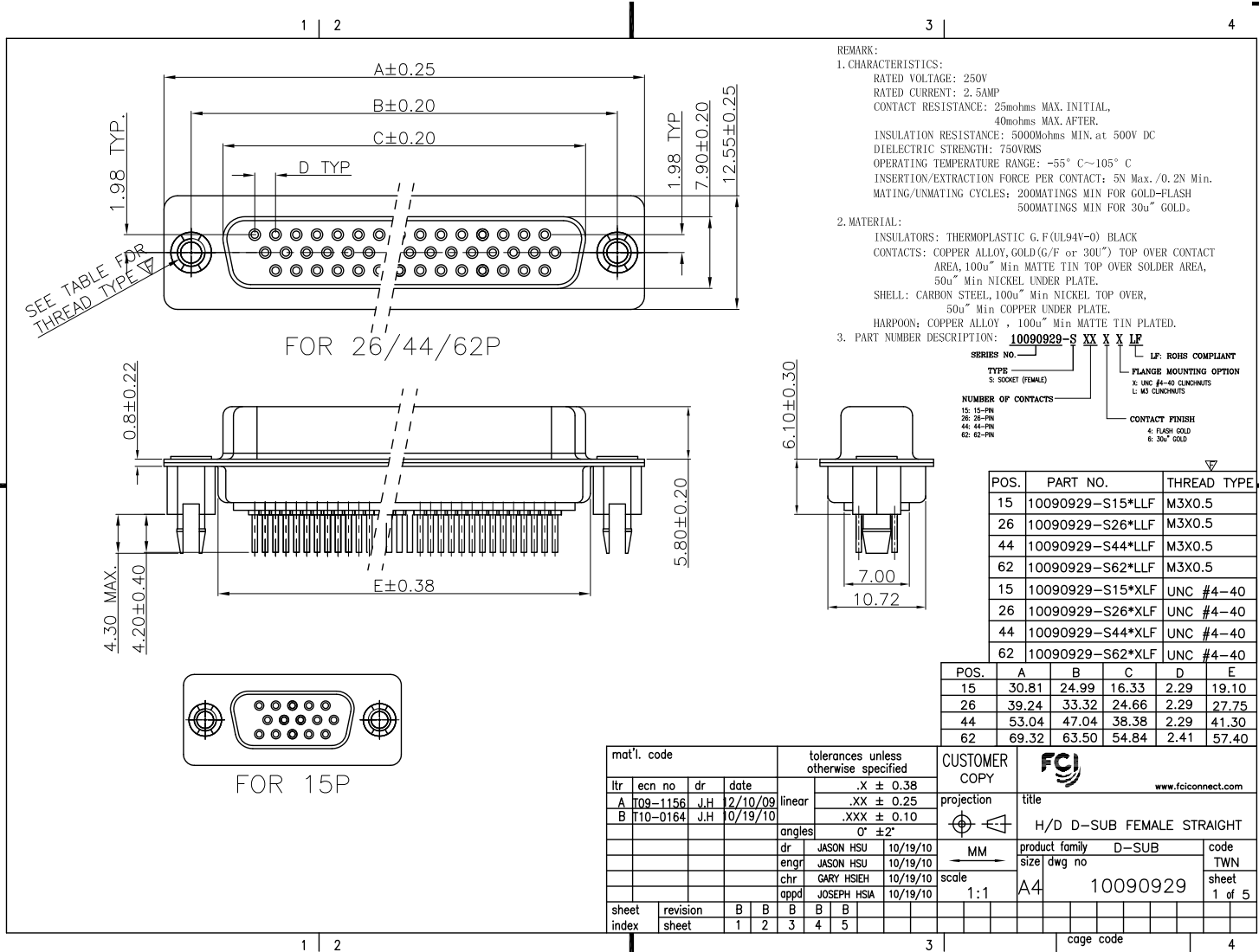


Tous droits strictement réservés. Reproduction ou communication à des tiers interdite sous quelque forme que ce soit sans autorisation écrite du propriétaire. Propriété de c. FCI. Droits de reproduction FCI.



All rights strictly reserved. Reproduction or issue to third parties in any form whatever is not permitted without written authority from the proprietor. Property of FCI. Copyright FCI.



REMARK:

1. CHARACTERISTICS:
 RATED VOLTAGE: 250V
 RATED CURRENT: 2.5AMP
 CONTACT RESISTANCE: 25mohms MAX. INITIAL, 40mohms MAX. AFTER.
 INSULATION RESISTANCE: 5000Mohms MIN. at 500V DC
 DIELECTRIC STRENGTH: 750VRMS
 OPERATING TEMPERATURE RANGE: -55° C~105° C
 INSERTION/EXTRACTION FORCE PER CONTACT: 5N Max. /0.2N Min.
 MATING/UNMATING CYCLES: 200MATINGS MIN FOR GOLD-FLASH 500MATINGS MIN FOR 30u" GOLD.

2. MATERIAL:
 INSULATORS: THERMOPLASTIC G.F.(UL94V-0) BLACK
 CONTACTS: COPPER ALLOY, GOLD(G/F or 30u") TOP OVER CONTACT AREA, 100u" Min MATTE TIN TOP OVER SOLDER AREA, 50u" Min NICKEL UNDER PLATE.
 SHELL: CARBON STEEL, 100u" Min NICKEL TOP OVER, 50u" Min COPPER UNDER PLATE.
 HARPOON: COPPER ALLOY, 100u" Min MATTE TIN PLATED.

3. PART NUMBER DESCRIPTION: **10090929-S XX XL LF**

SERIES NO. **10090929-S** XX XL LF
 TYPE: S SOCKET (FEMALE)
 NUMBER OF CONTACTS:
 15: 15-PIN
 26: 26-PIN
 44: 44-PIN
 62: 62-PIN
 LF: ROHS COMPLIANT
 FLANGE MOUNTING OPTION:
 X: UNC #4-40 CLINCHNUTS
 L: M3 CLINCHNUTS
 CONTACT FINISH:
 2: TUBS GOLD
 6: 30u" GOLD

POS.	PART NO.	THREAD TYPE
15	10090929-S15*LLF	M3X0.5
26	10090929-S26*LLF	M3X0.5
44	10090929-S44*LLF	M3X0.5
62	10090929-S62*LLF	M3X0.5
15	10090929-S15*XL	UNC #4-40
26	10090929-S26*XL	UNC #4-40
44	10090929-S44*XL	UNC #4-40
62	10090929-S62*XL	UNC #4-40

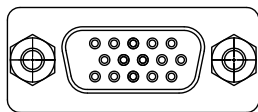
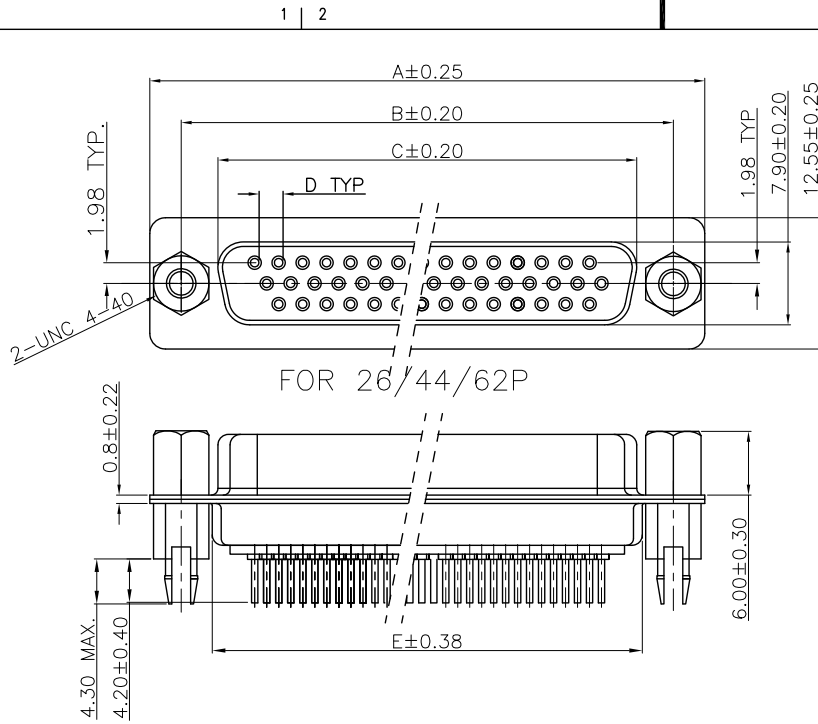
POS.	A	B	C	D	E
15	30.81	24.99	16.33	2.29	19.10
26	39.24	33.32	24.66	2.29	27.75
44	53.04	47.04	38.38	2.29	41.30
62	69.32	63.50	54.84	2.41	57.40

mat'l. code				tolerances unless otherwise specified				CUSTOMER COPY		FCI	
lfr	ecn no	dr	date	linear	.X ± 0.38	projection	title	www.fciconnect.com			
A	T09-1156	J.H	12/10/09		.XX ± 0.25		H/D D-SUB FEMALE STRAIGHT	product family		code	
B	T10-0164	J.H	10/19/10	angles	.XXX ± 0.10			D-SUB	TWN		
				dr	0° ±2°	MM	size	dwg no		sheet	
				engr		scale	A4	10090929		1 of 5	
				chr	JASON HSU 10/19/10	1:1					
				appd	JASON HSU 10/19/10						
sheet index	revision	B	B	B	B						
	sheet	1	2	3	4						

Tous droits strictement réservés. Reproduction ou communication à des tiers interdite sous quelque forme que ce soit sans autorisation écrite du propriétaire. Propriété de c. FCJ. Droits de reproduction FCJ.



All rights strictly reserved. Reproduction or issue to third parties in any form whatever is not permitted without written authority from the proprietor. Property of FCJ. Copyright FCJ.



FOR 15P

REMARK:

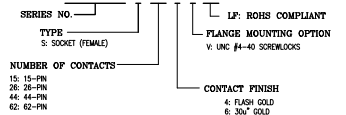
1. CHARACTERISTICS:

RATED VOLTAGE: 250V
 RATED CURRENT: 2.5AMP
 CONTACT RESISTANCE: 25mohms MAX. INITIAL,
 40mohms MAX. AFTER.
 INSULATION RESISTANCE: 5000Mohms MIN. at 500V DC
 DIELECTRIC STRENGTH: 750VRMS
 OPERATING TEMPERATURE RANGE: -55° C~105° C
 INSERTION/EXTRACTION FORCE PER CONTACT: 5N Max./0.2N Min.
 MATING/UNMATING CYCLES: 200MATINGS MIN FOR GOLD-FLASH
 500MATINGS MIN FOR 30u" GOLD.

2. MATERIAL:

INSULATORS: THERMOPLASTIC G.F (UL94V-0) BLACK
 CONTACTS: COPPER ALLOY, GOLD(G/F or 30u") TOP OVER CONTACT AREA, 100u" Min MATTE TIN TOP OVER SOLDER AREA, 50u" Min NICKEL UNDER PLATE.
 SHELL: CARBON STEEL, 100u" Min NICKEL TOP OVER, 50u" Min COPPER UNDER PLATE.
 HARPOON: COPPER ALLOY, 100u" Min MATTE TIN PLATED.
 NUT: COPPER ALLOY, 50u" Min NICKEL PLATED.

3. PART NUMBER DESCRIPTION: 10090929-S XX X X LF



POS.	A	B	C	D	E
15	30.81	24.99	16.33	2.29	19.10
26	39.24	33.32	24.66	2.29	27.75
44	53.04	47.04	38.38	2.29	41.30
62	69.32	63.50	54.84	2.41	57.40

mat'l. code				tolerances unless otherwise specified		CUSTOMER COPY		FCJ		www.fciconnect.com	
ltr	ecn no	dr	date	linear	.X ± 0.38	projection	title				
B				angles	.XX ± 0.25		H/D D-SUB FEMALE STRAIGHT				
				dr	.XXX ± 0.10		product family	D-SUB		code	
				enrg	0° ±2°	size	dwg no		TWN		
				chr	JASON HSU 10/19/10	scale	A4 10090929		sheet		
				appd	JASON HSU 10/19/10	1:1			2 of 5		
sheet index	revision										
	sheet										

ACAD

PDM: Rev:B

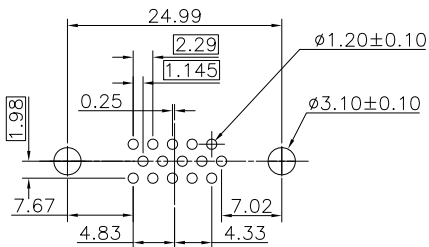
STATUS:Released

Printed: Nov 02, 2010

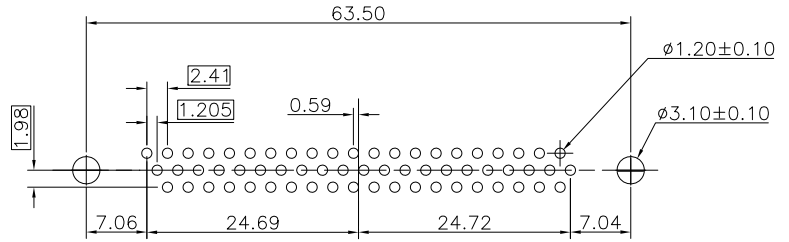
Tous droits strictement réservés. Reproduction ou communication à des tiers interdite sous quelque forme que ce soit sans autorisation écrite du propriétaire. Property of FCJ. Droits de reproduction FCJ.



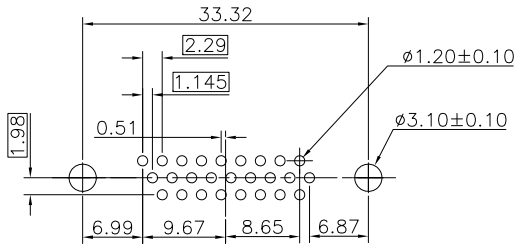
All rights strictly reserved. Reproduction or issue to third parties in any form whatever is not permitted without written authority from the proprietor. Property of FCJ. Copyright FCJ.



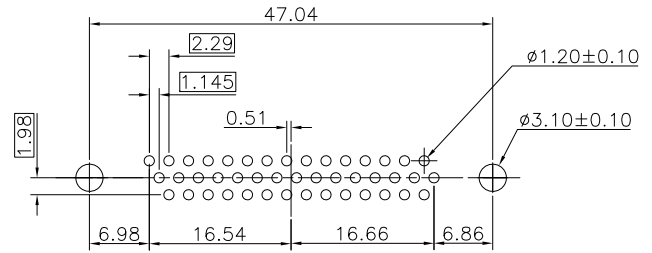
P.C.B LAYOUT(FOR 15P)



P.C.B LAYOUT(FOR 62P)



P.C.B LAYOUT(FOR 26P)



P.C.B LAYOUT(FOR 44P)

mat'l. code				tolerances unless otherwise specified			CUSTOMER COPY		FCJ	
ltr	ecn no	dr	date	linear	.X ± 0.38	projection	title			
B					.XX ± 0.25		H/D D-SUB FEMALE STRAIGHT PCB			
				angles	.XXX ± 0.10		product family	D-SUB		code
				dr	0° ± 2°	MM	size	10090929		TWN
				engr	JASON HSU 10/19/10	scale	A4	10090929		sheet
				chr	JASON HSU 10/19/10	1:1			3 of 5	
				appd	GARY HSIEH 10/19/10					
					JOSEPH HSIA 10/19/10					
sheet index	revision sheet							cage code		

ACAD

PDM: Rev:B

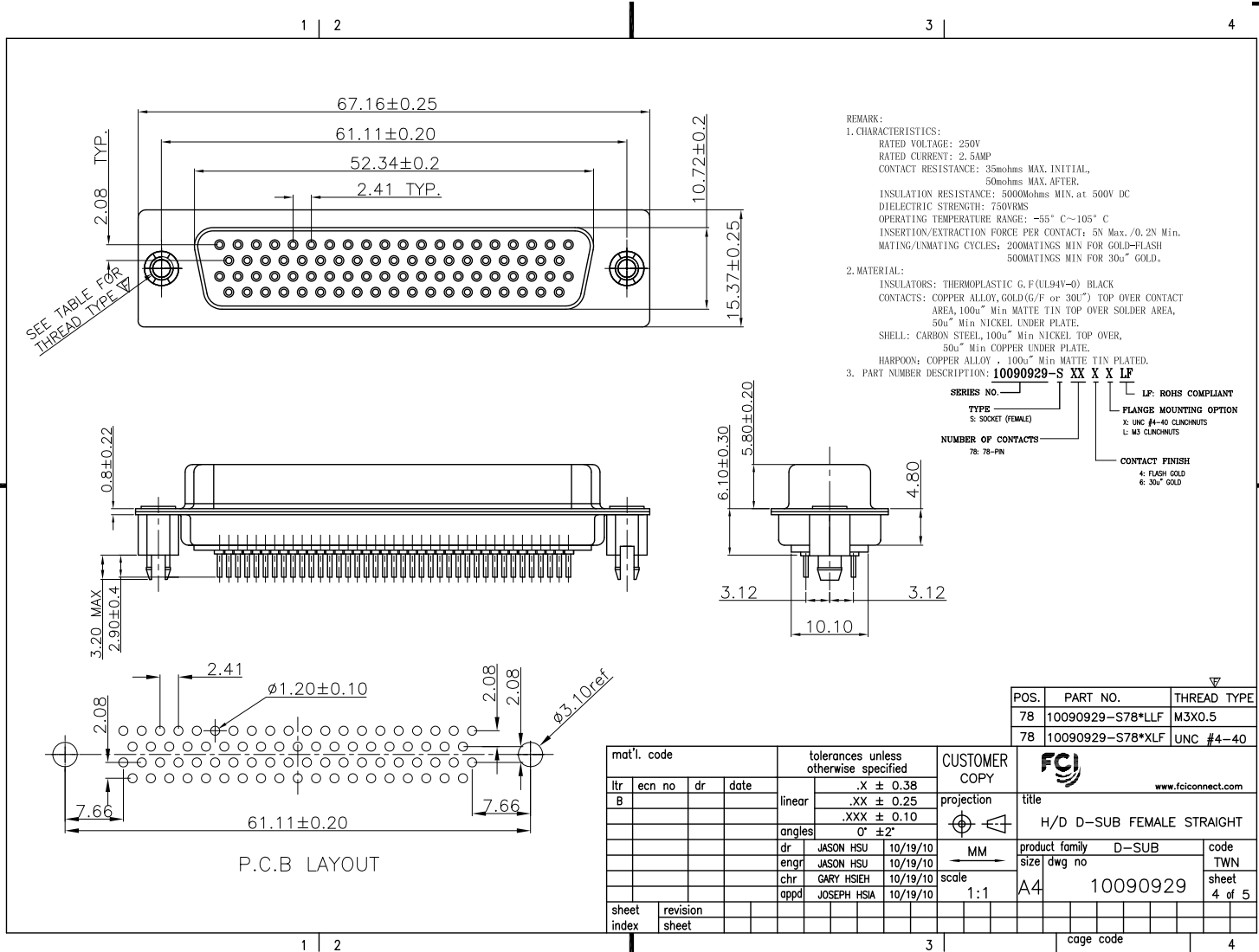
STATUS:Released

Printed: Nov 02, 2010

Tous droits strictement réservés. Reproduction ou communication à des tiers interdite sous quelque forme que ce soit sans autorisation écrite du propriétaire. Property of FCJ. Droits de reproduction FCJ.



All rights strictly reserved. Reproduction or issue to third parties in any form whatever is not permitted without written authority from the proprietor. Property of FCJ. Copyright FCJ.



POS.	PART NO.	THREAD TYPE
78	10090929-S78*LLF	M3X0.5
78	10090929-S78*XLF	UNC #4-40

mat'l. code				tolerances unless otherwise specified		CUSTOMER COPY	
ltr	ecn no	dr	date	linear	.X ± 0.38	projection	title
B				angles	.XX ± 0.25		H/D D-SUB FEMALE STRAIGHT
				dr	.XXX ± 0.10		product family
				enrg	0° ± 2°	size	dwg no
				chr		scale	10090929
				appd		1:1	
sheet index	revision	sheet					

Tous droits strictement réservés. Reproduction ou communication à des tiers interdite sous quelque forme que ce soit sans autorisation écrite du propriétaire. Propriété de c. FCJ. Droits de reproduction FCJ.

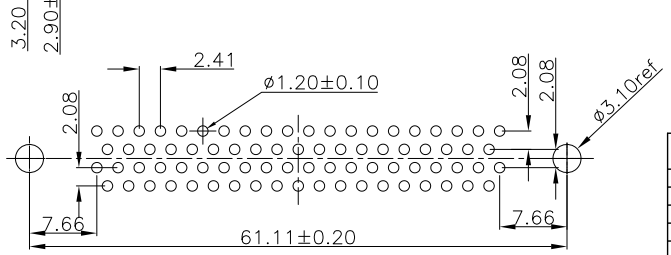
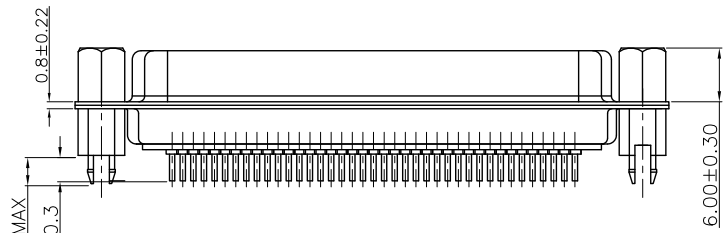
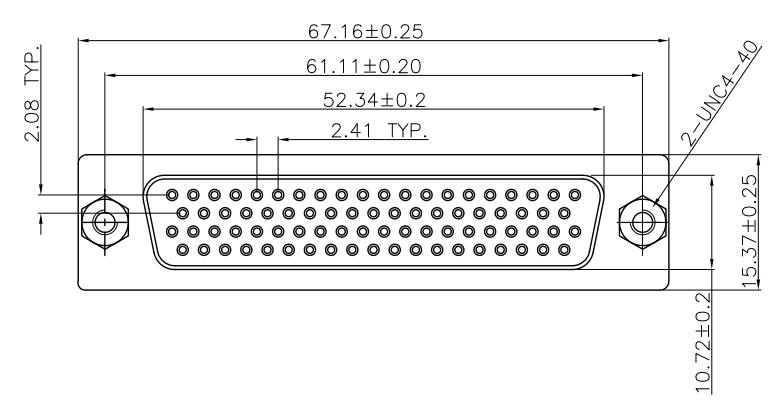


All rights strictly reserved. Reproduction or issue to third parties in any form whatever is not permitted without written authority from the proprietor. Property of FCJ. Copyright FCJ.

1 | 2

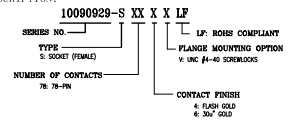
3

4



P.C.B LAYOUT

REMARK:
 1. CHARACTERISTICS:
 RATED VOLTAGE: 250V
 RATED CURRENT: 2.5AMP
 CONTACT RESISTANCE: 35mohms MAX. INITIAL, 50mohms MAX. AFTER.
 INSULATION RESISTANCE: 5000Mohms MIN. at 500V DC
 DIELECTRIC STRENGTH: 750V/RMS
 OPERATING TEMPERATURE RANGE: -55° C~105° C
 INSERTION/EXTRACTION FORCE PER CONTACT: 5N Max./0.2N Min.
 MATING/UNMATING CYCLES: 200MATINGS MIN FOR GOLD-FLASH 500MATINGS MIN FOR 30u" GOLD.
 2. MATERIAL:
 INSULATORS: THERMOPLASTIC G.F.(UL94V-0) BLACK
 CONTACTS: COPPER ALLOY, GOLD(G/F or 30u") TOP OVER CONTACT AREA, 100u" Min MATTE TIN TOP OVER SOLDER AREA, 50u" Min NICKEL UNDER PLATE.
 SHELL: CARBON STEEL, 100u" Min NICKEL TOP OVER, 50u" Min COPPER UNDER PLATE.
 HARPOON: COPPER ALLOY, 100u" Min MATTE TIN PLATED.
 NUT: COPPER ALLOY, 50u" Min NICKEL PLATED.
 3. PART NUMBER DESCRIPTION:



PART NO.: 10090929-S78*VLF

mat'l. code				tolerances unless otherwise specified		CUSTOMER COPY		FCJ	
ltr	ecn no	dr	date	linear	.X ± 0.38	projection	www.fcjconnect.com		
B					.XX ± 0.25	⊕	title		
				angles	.XXX ± 0.10	MM	H/D D-SUB FEMALE STRAIGHT		
				dr	0° ±2°	scale	product family	D-SUB	code
				engr		1:1	size	dwg no	TWN
				chr	JASON HSU 10/19/10		A4	10090929	sheet
				appd	JASON HSU 10/19/10				5 of 5
sheet index	revision								
	sheet								

1 | 2

3

4